



HIGH RESOLUTION IMAGING SCIENCE EXPERIMENT



DTM PDS RELEASES

September 2023

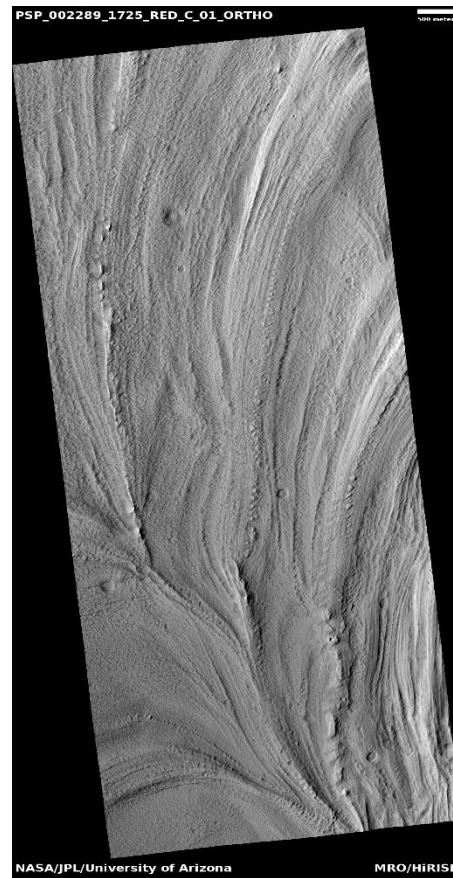
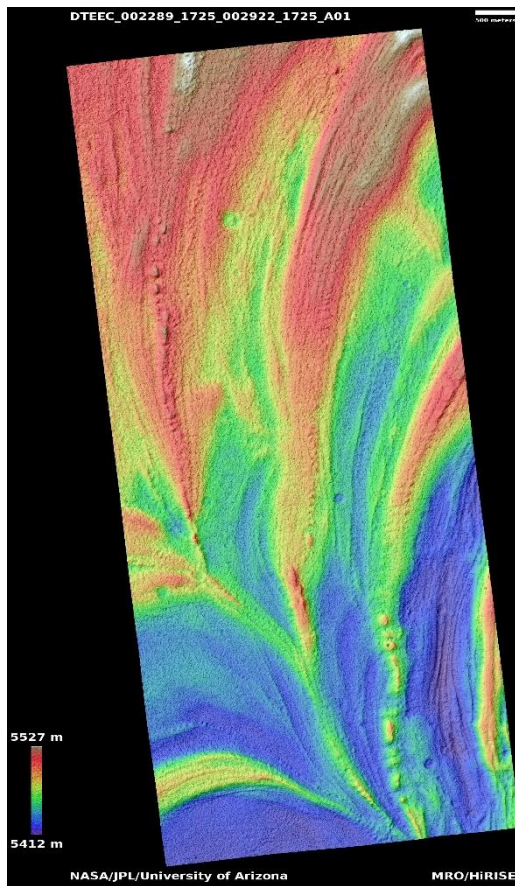
Edited by Kris Akers | UA

DTMs Included this Month

Glacial-like flow patterns in elongate depression on Arsia Mons flanks.....	1
Stratigraphy of phyllosilicate rocks northwest of Nili Fossae.....	2
Possible phyllosilicates in Nili Fossae.....	3
Light and dark dunes in Nili Fossae.....	4
Yardangs and stratigraphic relations in Memnonia Sulci.....	5
Glacial cirque-like feature in Hadriaca Patera.....	6
Baetis Chasma.....	7
Basal exposure of south polar layered deposits.....	8

Glacial-like flow patterns in elongate depression on Arsia Mons flanks

DTEEC_002289_1725_002922_1725_A01



7.3°S 236.2°E

DTM Producer: UA | Branden M Gosse

Stereo Pair:

PSP_002289_1725

PSP_002922_1725

For more details about this DTM, visit:

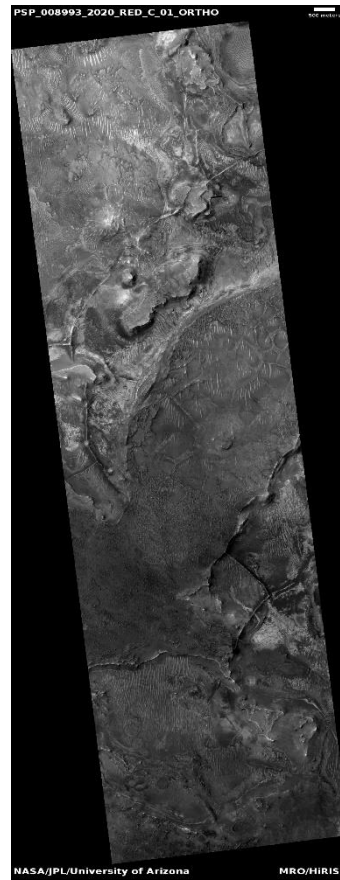
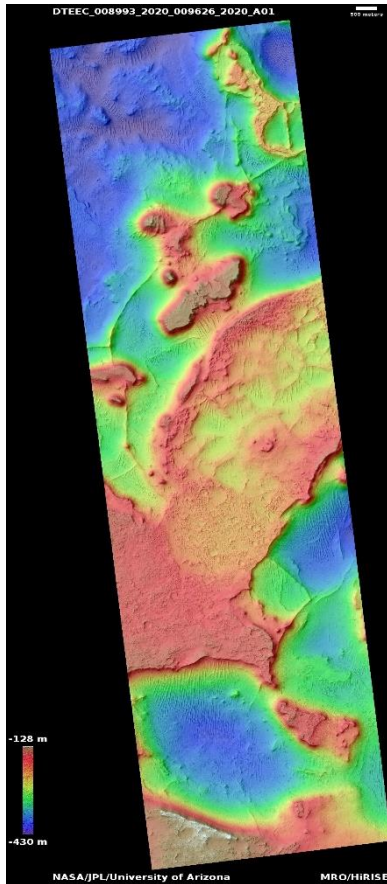
[https://www.uahirise.org/dtm/dtm.php?](https://www.uahirise.org/dtm/dtm.php?ID=PSP_002289_1725)

[ID=PSP_002289_1725](https://www.uahirise.org/dtm/dtm.php?ID=PSP_002289_1725)



Stratigraphy of phyllosilicate rocks northwest of Nili Fossae

DTEEC_008993_2020_009626_2020_A01



21.8°N 72.3°E

DTM Producer: UA | Maximus X Cabrera

Stereo Pair:

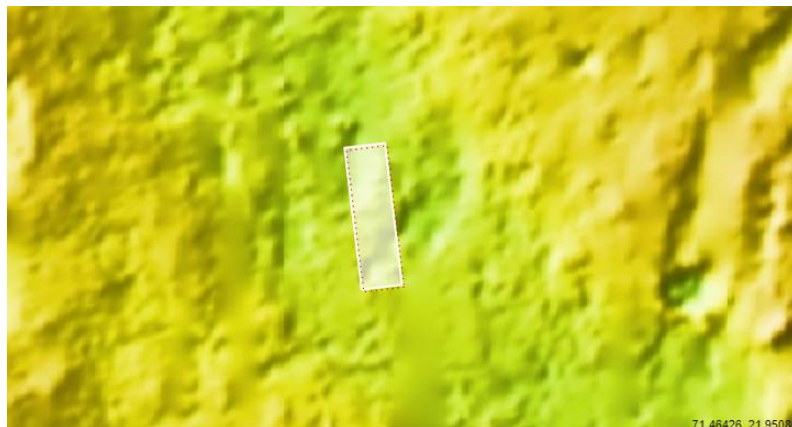
PSP_008993_2020

PSP_009626_2020

For more details about this DTM, visit:

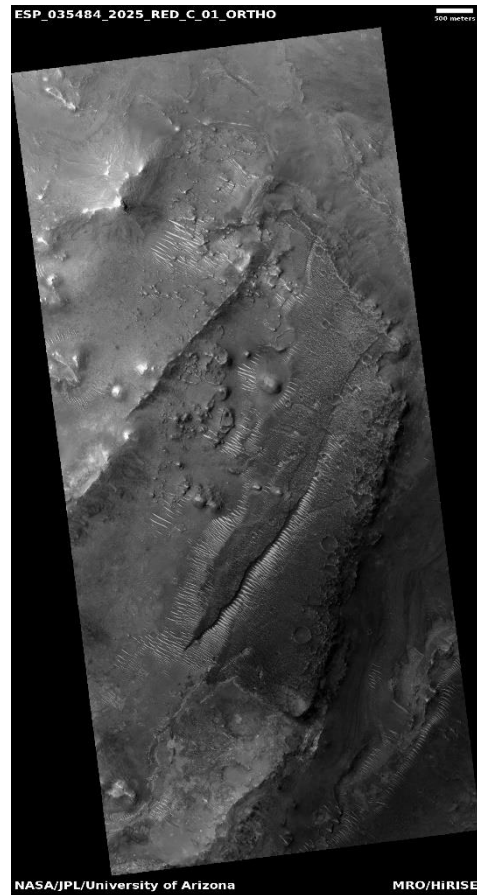
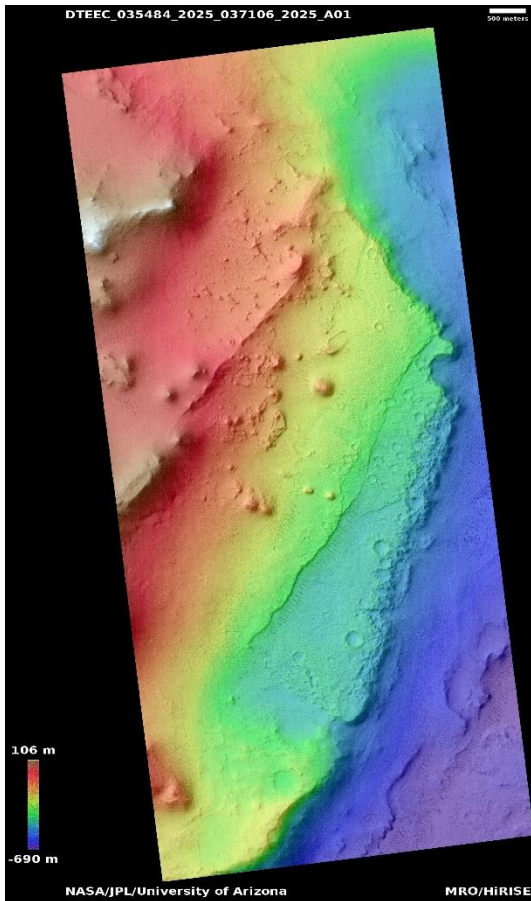
[https://www.uahirise.org/dtm/dtm.php?](https://www.uahirise.org/dtm/dtm.php?ID=PSP_008993_2020)

[ID=PSP_008993_2020](https://www.uahirise.org/dtm/dtm.php?ID=PSP_008993_2020)



Possible phyllosilicates in Nili Fossae

DTEEC_035484_2025_037106_2025_A01



22.4°N 75.0°E

DTM Producer: UA | Maximus X Cabrera

Stereo Pair:

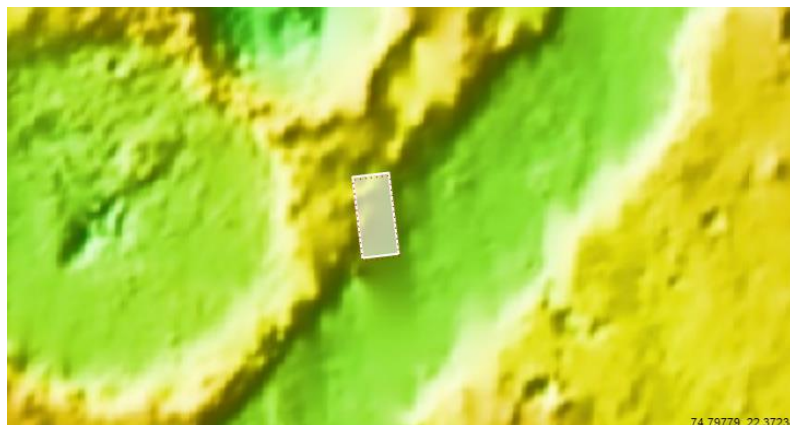
ESP_035484_2025

ESP_037106_2025

For more details about this DTM, visit:

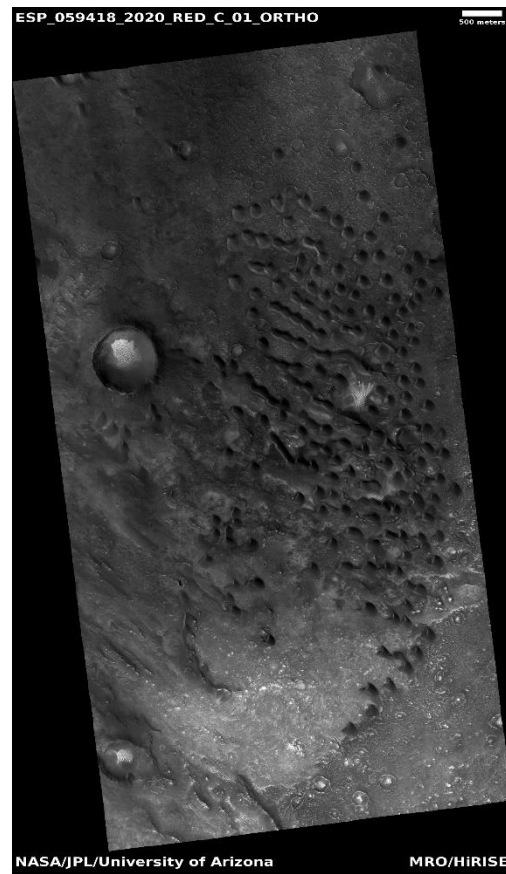
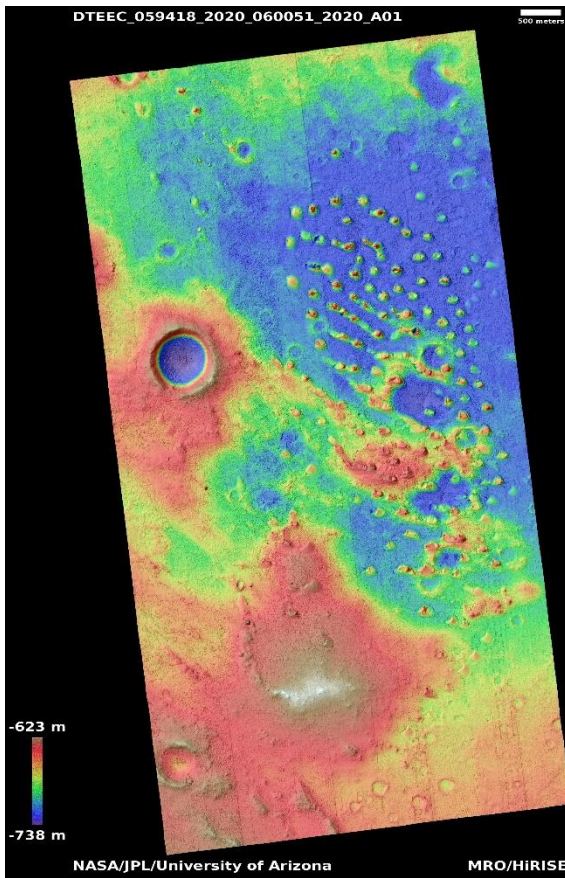
[https://www.uahirise.org/dtm/dtm.php?](https://www.uahirise.org/dtm/dtm.php?ID=ESP_035484_2025)

[ID=ESP_035484_2025](https://www.uahirise.org/dtm/dtm.php?ID=ESP_035484_2025)



Light and dark dunes in Nili Fossae

DTEEC_059418_2020_060051_2020_A01



21.6°N 74.6°E

DTM Producer: UA | Kris Akers

Stereo Pair:

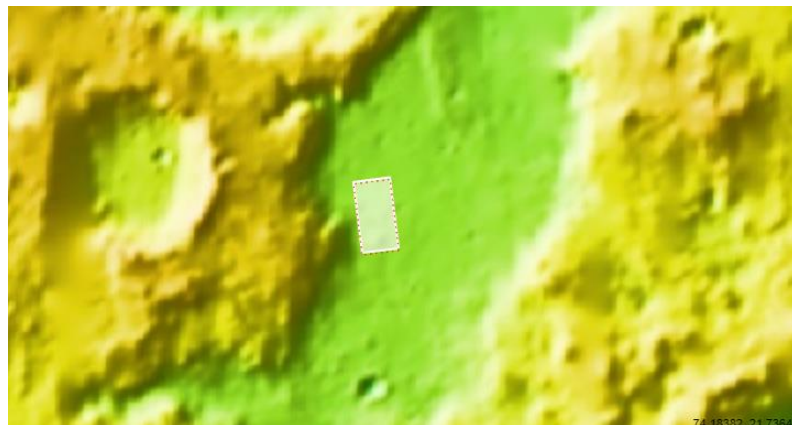
ESP_059418_2020

ESP_060051_2020

For more details about this DTM, visit:

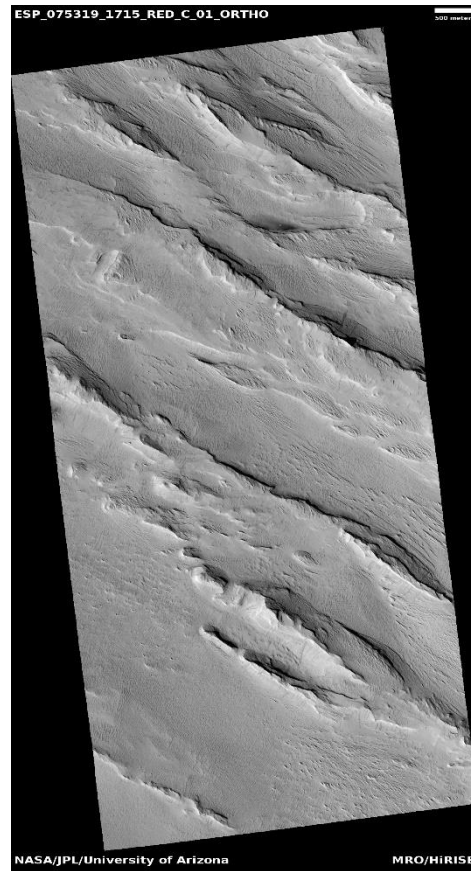
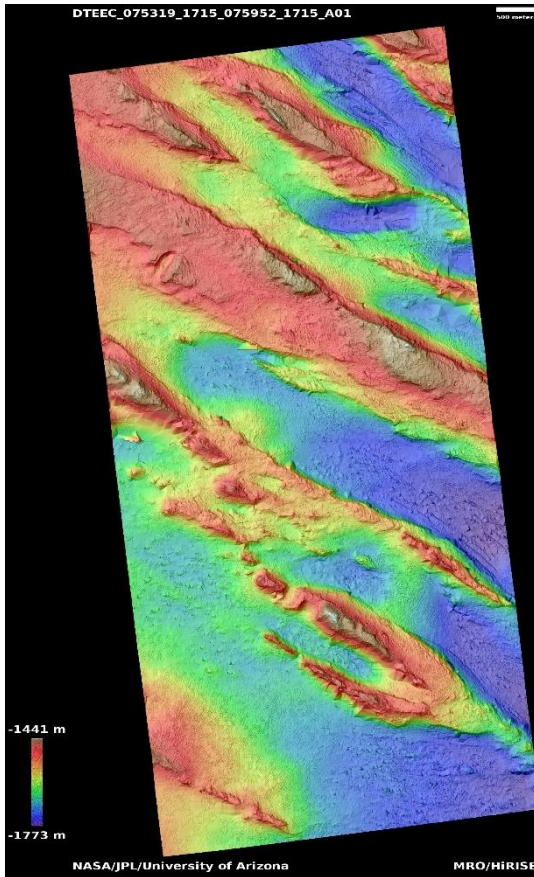
<https://www.uahirise.org/dtm/dtm.php?>

[ID=ESP_059418_2020](https://www.uahirise.org/dtm/dtm.php?ID=ESP_059418_2020)



Yardangs and stratigraphic relations in Memnonia Sulci

DTEEC_075319_1715_075952_1715_A01



8.5°S 185.3°E

DTM Producer: UA | Maximus X Cabrera

Stereo Pair:

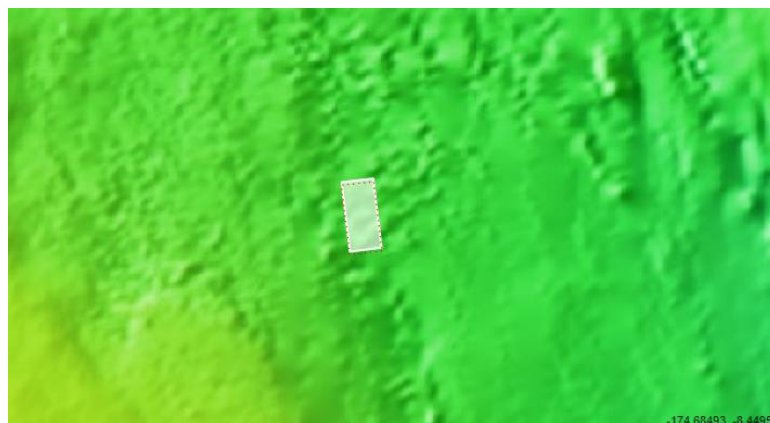
ESP_075319_1715

ESP_075952_1715

For more details about this DTM, visit:

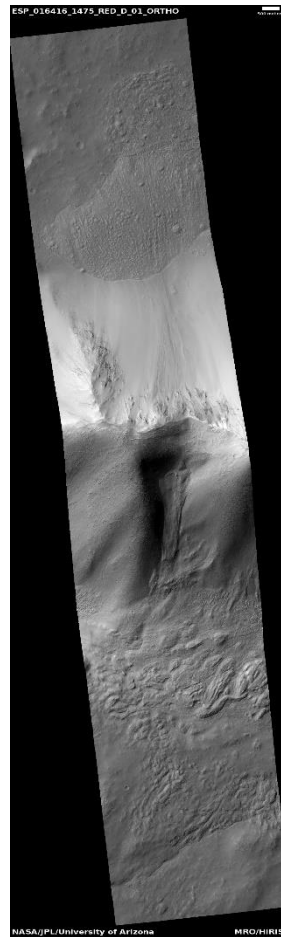
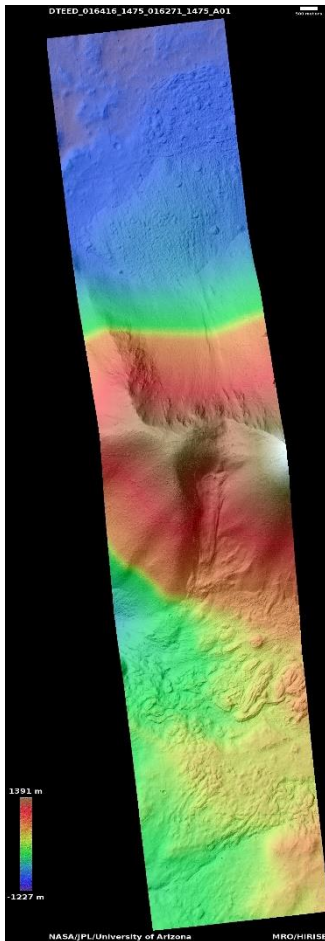
[https://www.uahirise.org/dtm/dtm.php?](https://www.uahirise.org/dtm/dtm.php?ID=ESP_075319_1715)

[ID=ESP_075319_1715](https://www.uahirise.org/dtm/dtm.php?ID=ESP_075319_1715)



Glacial cirque-like feature in Hadriaca Patera

DTEED_016416_1475_016271_1475_A01



32.4°S 100.8°E

DTM Producer: UA | Maximus X Cabrera

Stereo Pair:

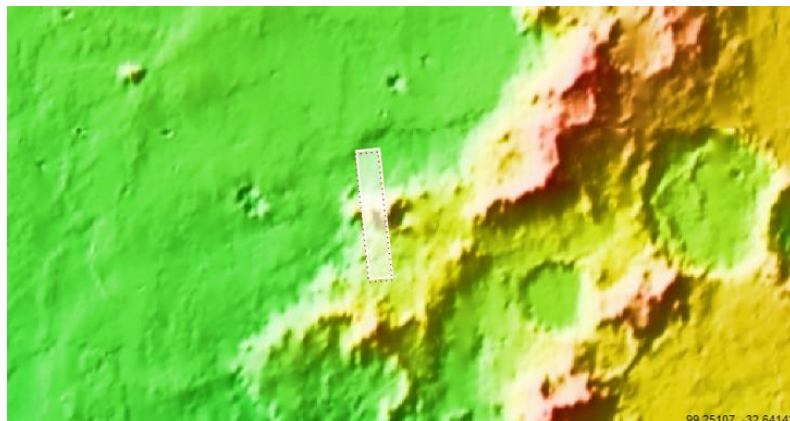
ESP_016416_1475

ESP_016271_1475

For more details about this DTM, visit:

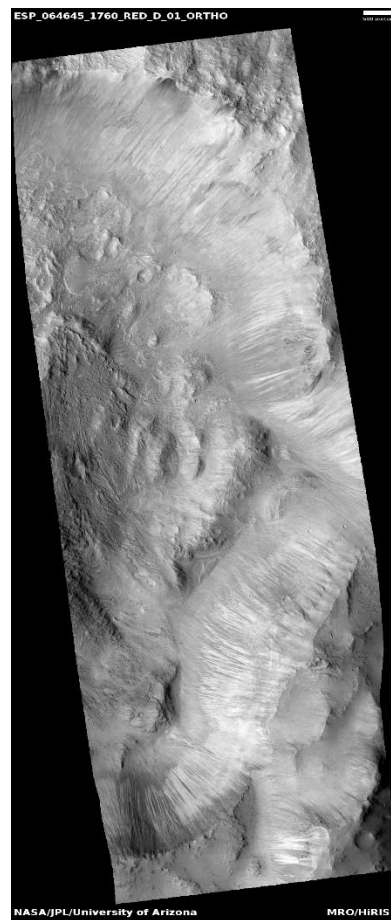
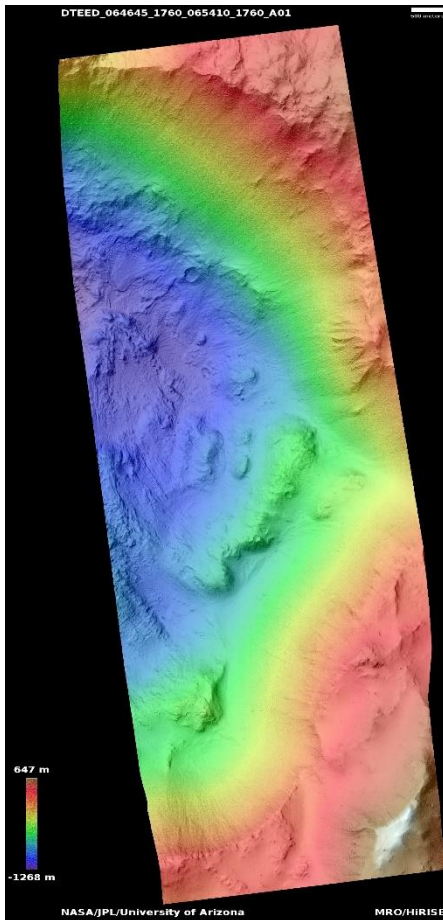
[https://www.uahirise.org/dtm/dtm.php?](https://www.uahirise.org/dtm/dtm.php?ID=ESP_016416_1475)

[ID=ESP_016416_1475](https://www.uahirise.org/dtm/dtm.php?ID=ESP_016416_1475)



Baetis Chasma

DTEED_064645_1760_065410_1760_A01



4.2°S 295.4°E

DTM Producer: UA | Maximus X Cabrera

Stereo Pair:

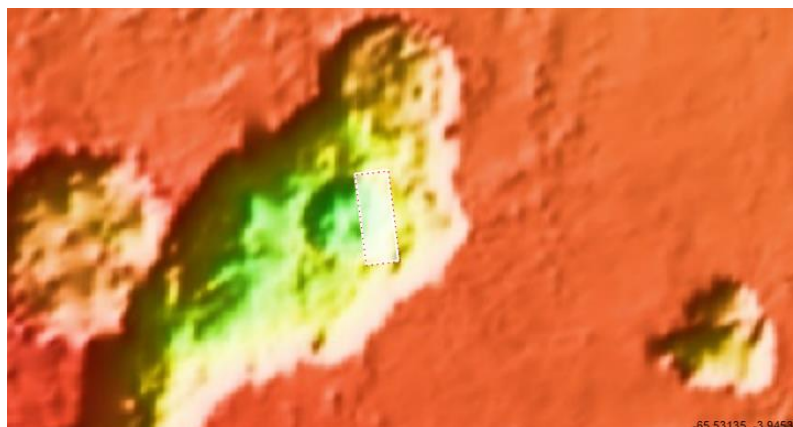
ESP_064645_1760

ESP_065410_1760

For more details about this DTM, visit:

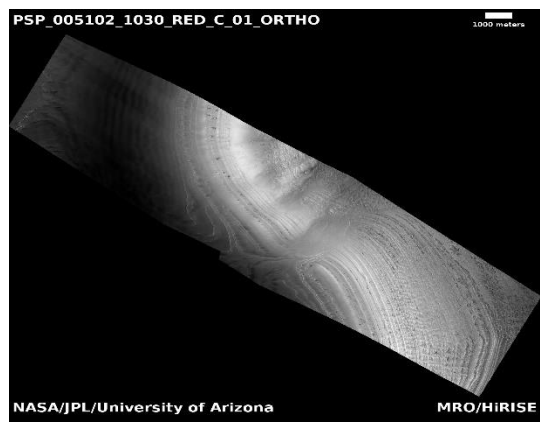
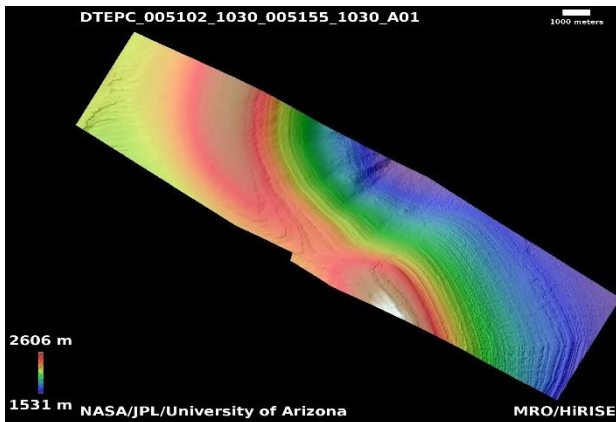
[https://www.uahirise.org/dtm/dtm.php?](https://www.uahirise.org/dtm/dtm.php?ID=ESP_064645_1760)

[ID=ESP_064645_1760](https://www.uahirise.org/dtm/dtm.php?ID=ESP_064645_1760)



Basal exposure of south polar layered deposits

DTEPC_005102_1030_005155_1030_A01



76.8°S 132.5°E

DTM Producer: UA | Kris Akers

Stereo Pair:

PSP_005102_1030

PSP_005155_1030

For more details about this DTM, visit:

[https://www.uahirise.org/dtm/dtm.php?](https://www.uahirise.org/dtm/dtm.php?ID=PSP_005102_1030)

[ID=PSP_005102_1030](https://www.uahirise.org/dtm/dtm.php?ID=PSP_005102_1030)

