



HIGH RESOLUTION IMAGING
SCIENCE EXPERIMENT



DTM PDS RELEASES

October 2020

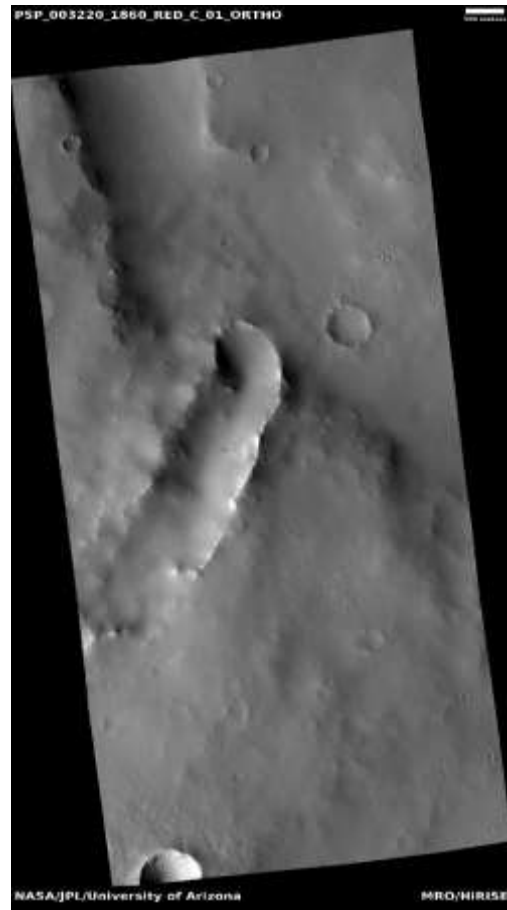
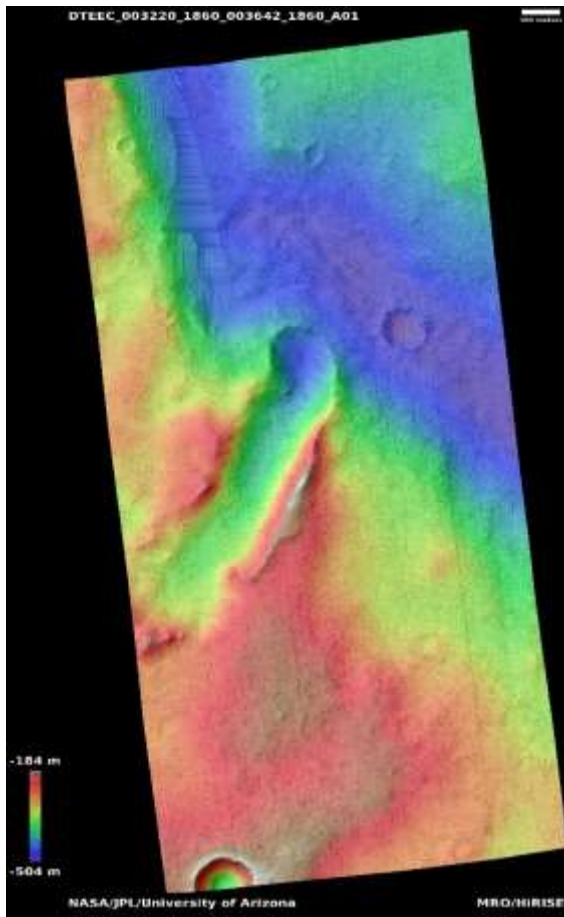
Edited by Kris Akers | UA

DTMs Included this Month

- Bright to dark slope streak in Arabia Terra.....1
- Medusae Fossae Formation and cratered cemented.....2
- Multicolor gullies.....3
- Bright slope streaks in Arabia Terra.....4
- Colorful mounds and bedrock in Terra Sirenum.....5
- Pits and gullies.....6
- Flow into breached crater in central Elysium.....7

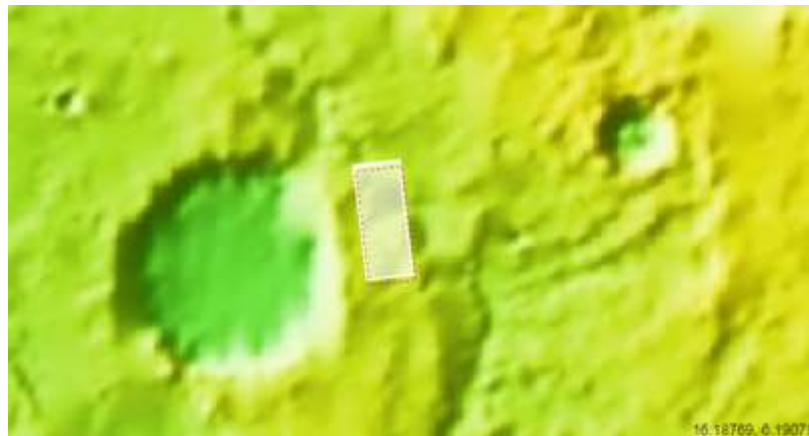
Bright to dark slope streak in Arabia Terra

DTEEC_003220_1860_003642_1860_A01



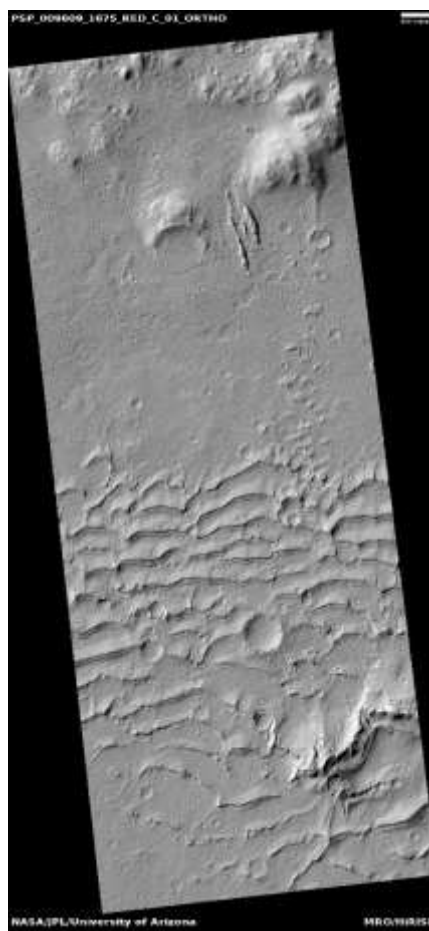
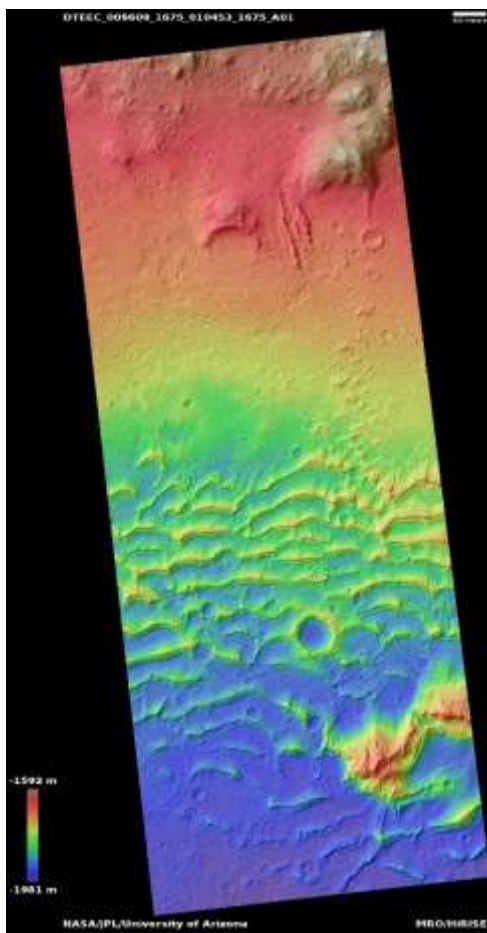
6.0°N 16.9°E
DTM Producer: UA | Shavonne Morin
Stereo Pair:
PSP_003220_1860
PSP_003642_1860

For more details about this DTM, visit:
https://www.uahirise.org/dtm/dtm.php?ID=PSP_003220_1860



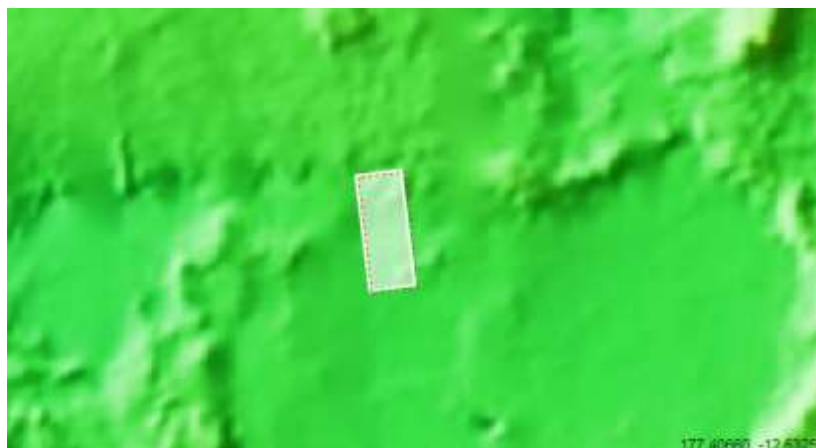
Medusae Fossae Formation and cratered cemented

DTEEC_009609_1675_010453_1675_A01



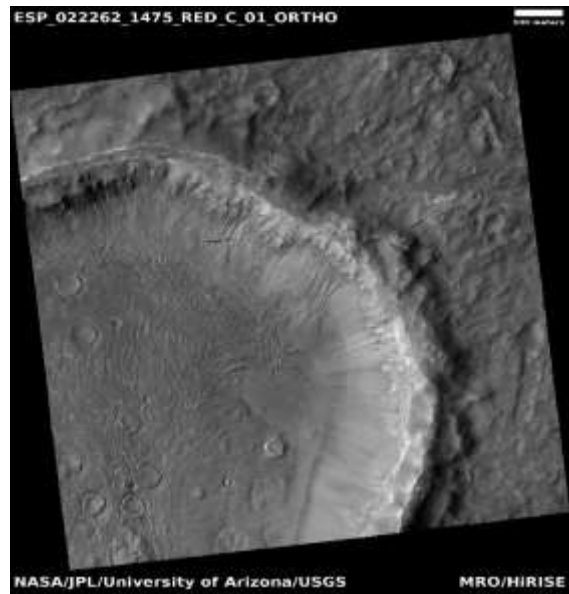
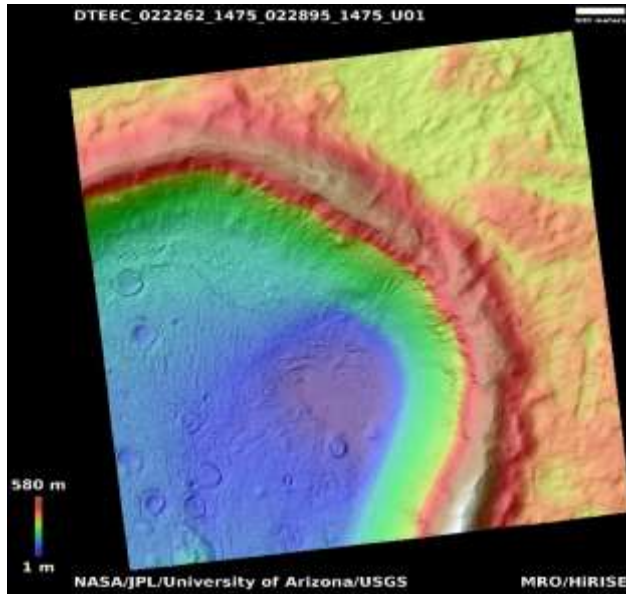
12.6°S 178.1°E
DTM Producer: UA | Michael Berube
Stereo Pair:
PSP_009609_1675
PSP_010453_1675

For more details about this DTM, visit:
https://www.uahirise.org/dtm/dtm.php?ID=PSP_009609_1675



Multicolor gullies

DTEEC_022262_1475_022895_1475_U01



32.3°S 338.2°E

DTM Producer: UA | USGS-Astrogeology

Stereo Pair:

ESP_022262_1475

ESP_022895_1475

Additional Orthos:

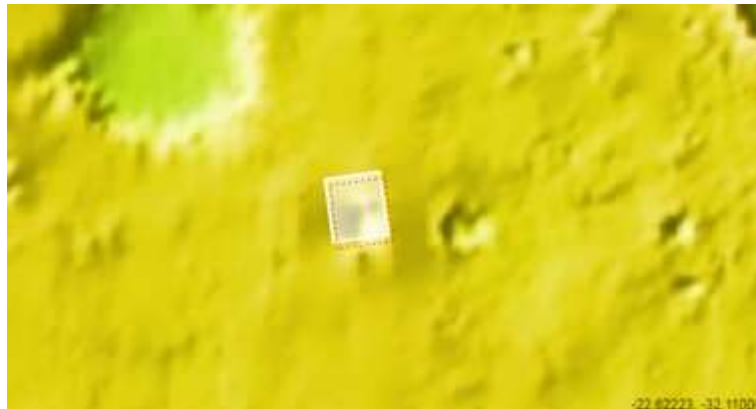
ESP_031954_1475

ESP_056903_1475

For more details about this DTM, visit:

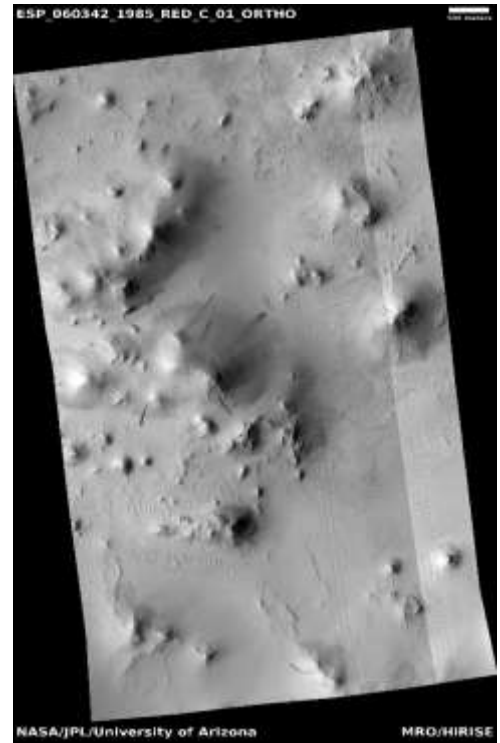
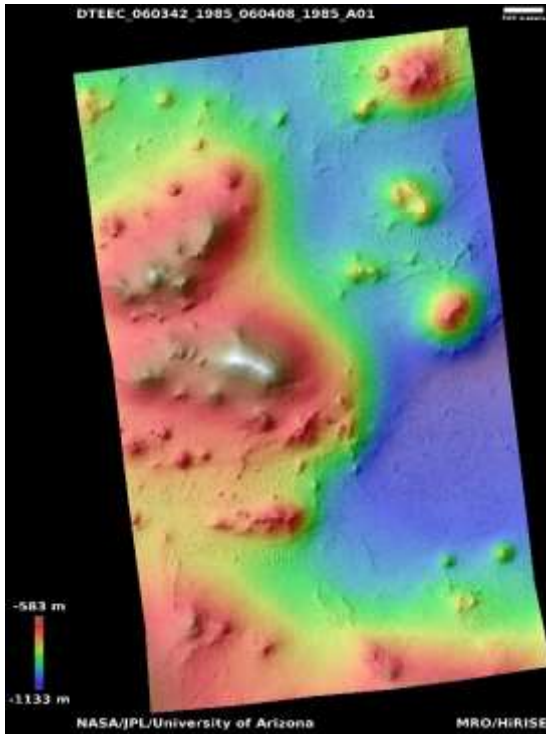
[https://www.uahirise.org/dtm/dtm.php?](https://www.uahirise.org/dtm/dtm.php?ID=ESP_022262_1475)

[ID=ESP_022262_1475](https://www.uahirise.org/dtm/dtm.php?ID=ESP_022262_1475)



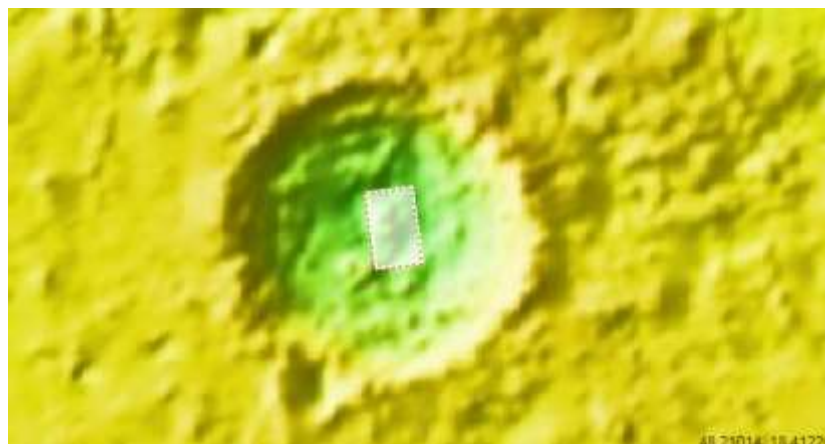
Bright slope streaks in Arabia Terra

DTEEC_060342_1985_060408_1985_A01



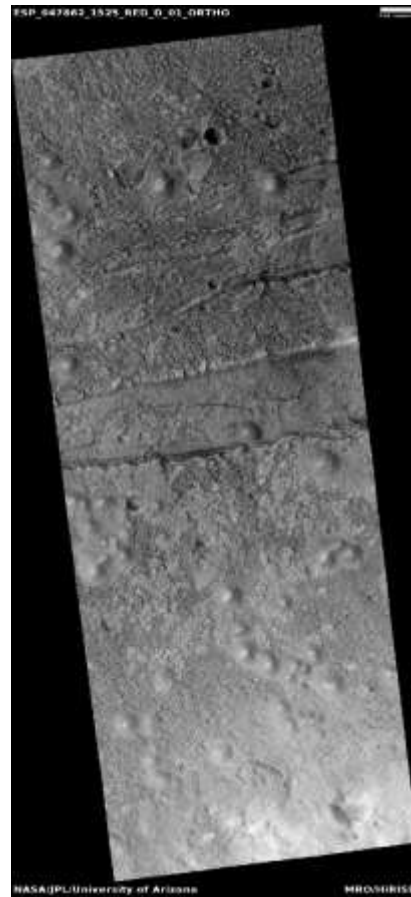
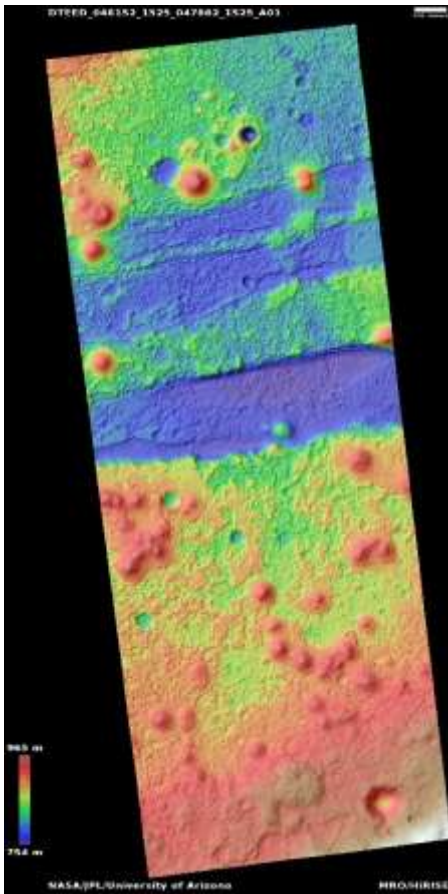
18.3°N 48.9°E
DTM Producer: UA | Shavonne Morin
Stereo Pair:
ESP_060342_1985
ESP_060408_1985

For more details about this DTM, visit:
https://www.uahirise.org/dtm/dtm.php?ID=ESP_060342_1985



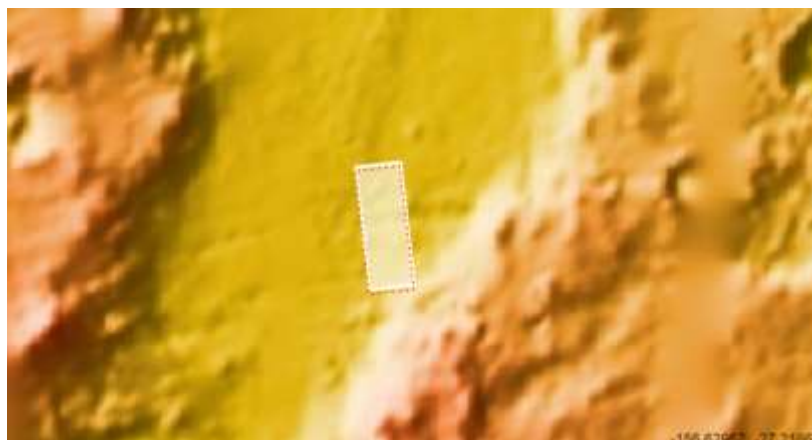
Colorful mounds and bedrock in Terra Sirenum

DTEED_048152_1525_047862_1525_A01



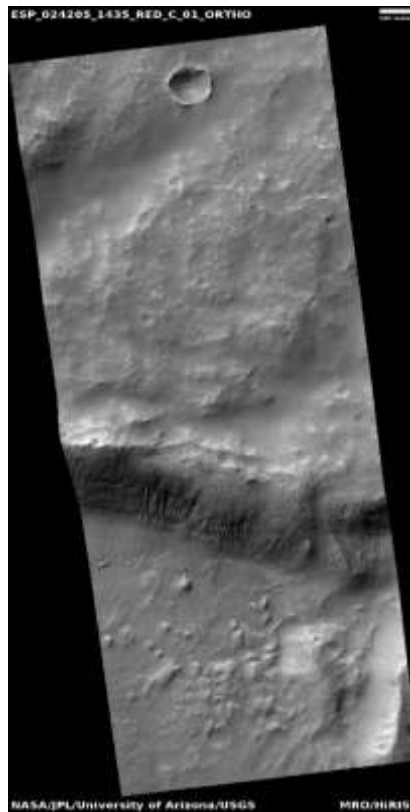
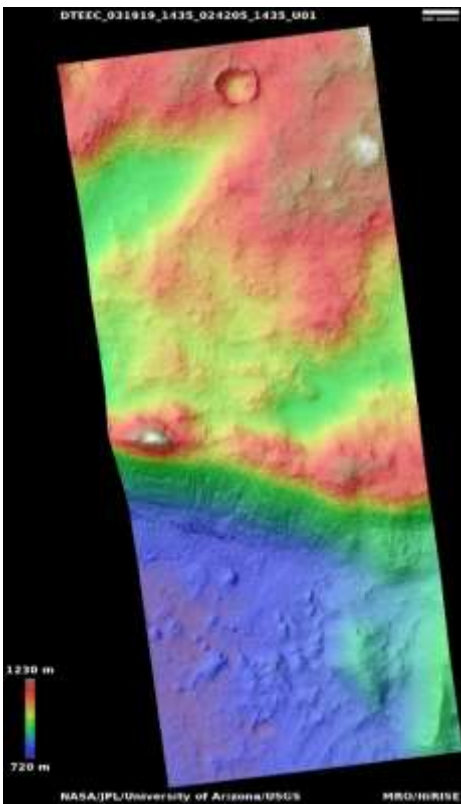
27.0°S 203.5°E
DTM Producer: UA | Kris Akers
Stereo Pair:
ESP_048152_1525
ESP_047862_1525

For more details about this DTM, visit:
https://www.uahirise.org/dtm/dtm.php?ID=ESP_048152_1525



Pits and gullies

DTEEC_031919_1435_024205_1435_U01



36.0°S 214.3°E

DTM Producer: UA | USGS_Astrogeology

Stereo Pair:

ESP_031919_1435

ESP_024205_1435

Additional Orthos:

ESP_035255_1435

ESP_036178_1435

ESP_036310_1435

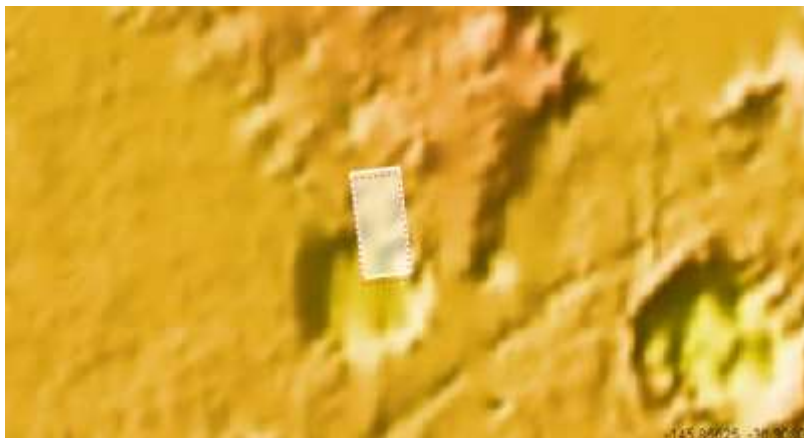
ESP_037233_1435

ESP_055549_1435

For more details about this DTM, visit:

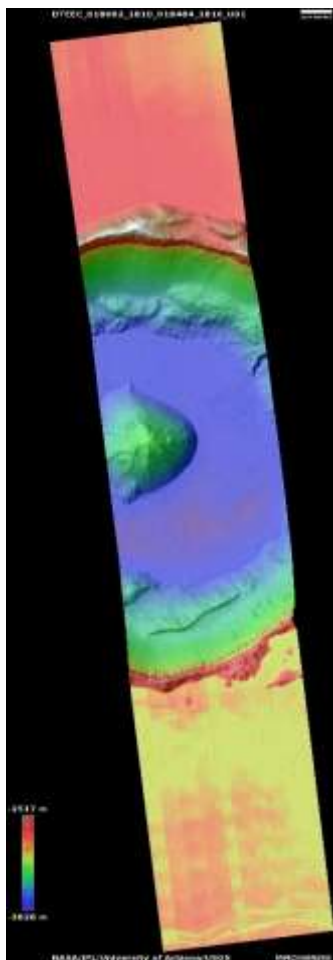
[https://www.uahirise.org/dtm/dtm.php?](https://www.uahirise.org/dtm/dtm.php?ID=ESP_031919_1435)

[ID=ESP_031919_1435](https://www.uahirise.org/dtm/dtm.php?ID=ESP_031919_1435)



Flow into breached crater in central Elysium

DTEEC_018062_1810_018484_1810_U01



0.84°S 160.6°E

DTM Producer: UA | USGS_Astrogeology

Stereo Pair:

ESP_018062_1810

ESP_018484_1810

For more details about this DTM, visit:
[https://www.uahirise.org/dtm/dtm.php?
ID=ESP_018062_1810](https://www.uahirise.org/dtm/dtm.php?ID=ESP_018062_1810)

