



## HIGH RESOLUTION IMAGING SCIENCE EXPERIMENT



COLLEGE OF SCIENCE  
**LUNAR & PLANETARY  
LABORATORY**

# DTM PDS RELEASES

*May 2024*

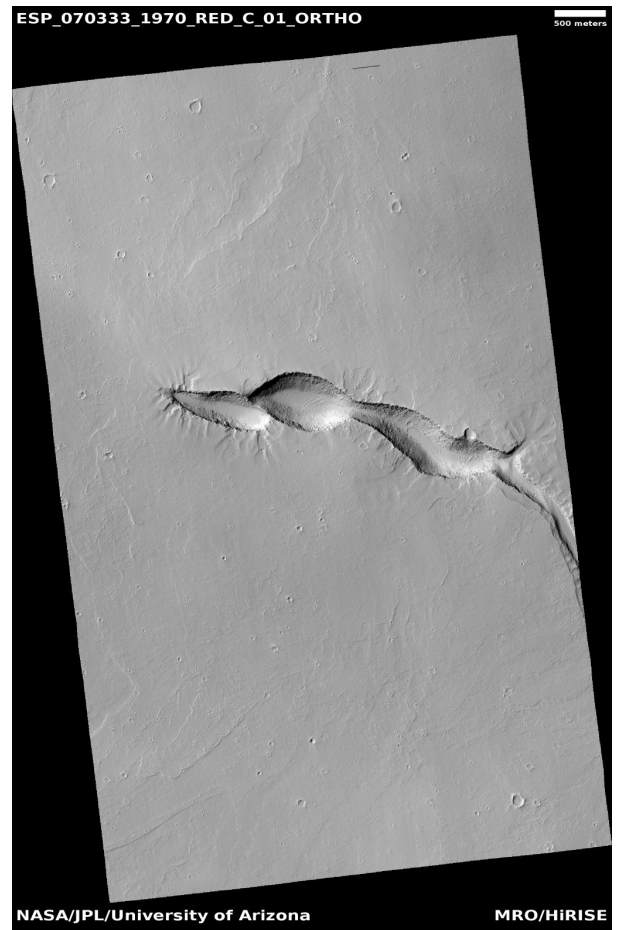
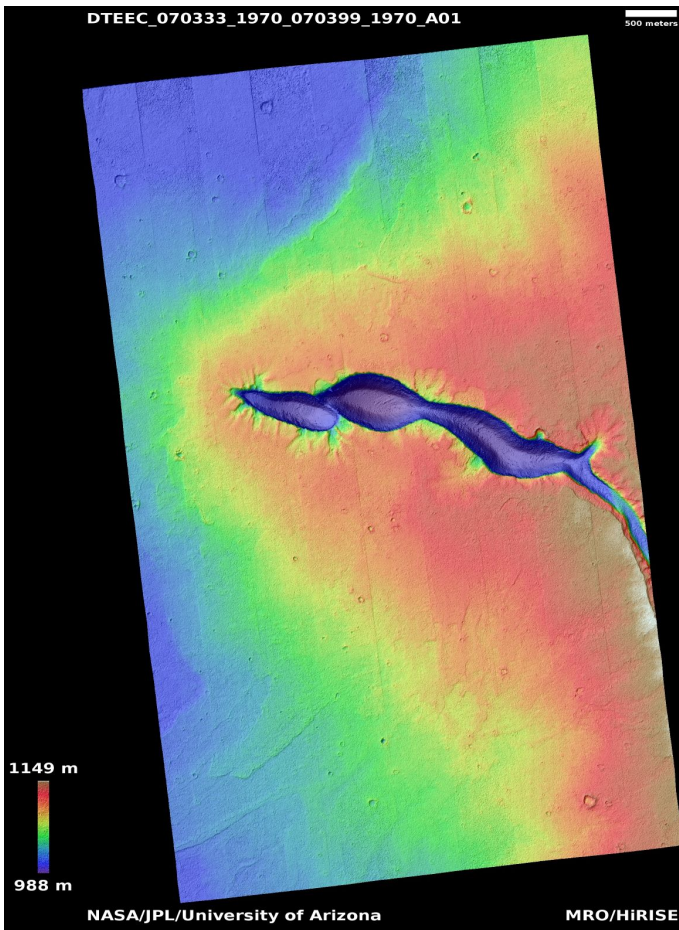
Edited by Kris Akers | UA

### DTMs Included this Month

Fissure vent in Gordii Fossae	1
Crater near Athabasca Valles	2
Fan with light-toned deposits	3
Braided channel system in eastern Hellas region	4
Well developed hollows and ridges in Nilosyrtis crater	5
Ridged flow-like features in Deuteronilus Mensae	6
Complex superposition of fractures	7
Ridged flow-like features in Deuteronilus Mensae	8
Rootless cone intersecting crater rim	9
Light-toned mounds in Acidalia Planitia	10
Fissure vent in Gordii Fossae	11
Shallow vent east of Olympus Mons	12
Cataracts at the proximal ends of distributaries in Athabasca Valles	13

# Fissure vent in Gordii Fossae

DTEEC\_070333\_1970\_070399\_1970\_A01



**Latitude:** 16.7    **Longitude:** 232.6

**DTM Producer:** UA | KRIS AMANDA AKERS

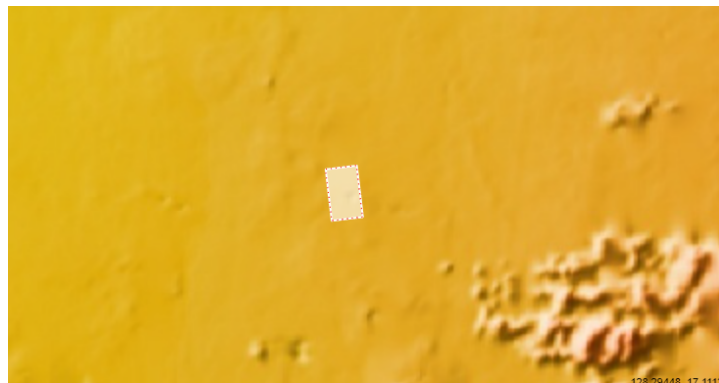
**Stereo Pair:**

ESP\_070333\_1970

ESP\_070399\_1970

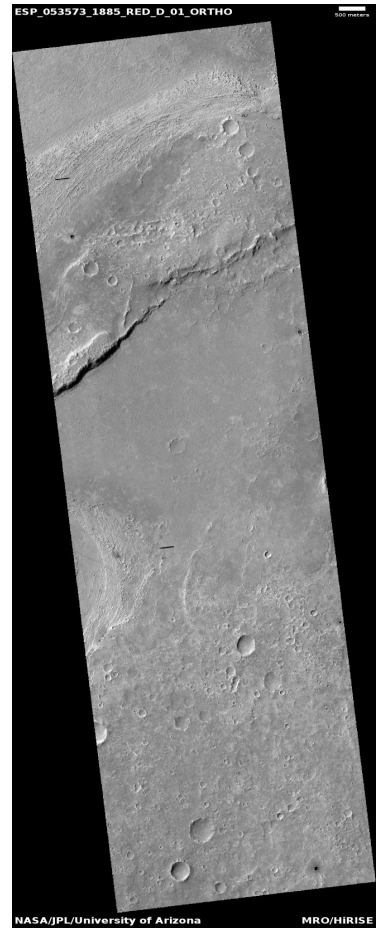
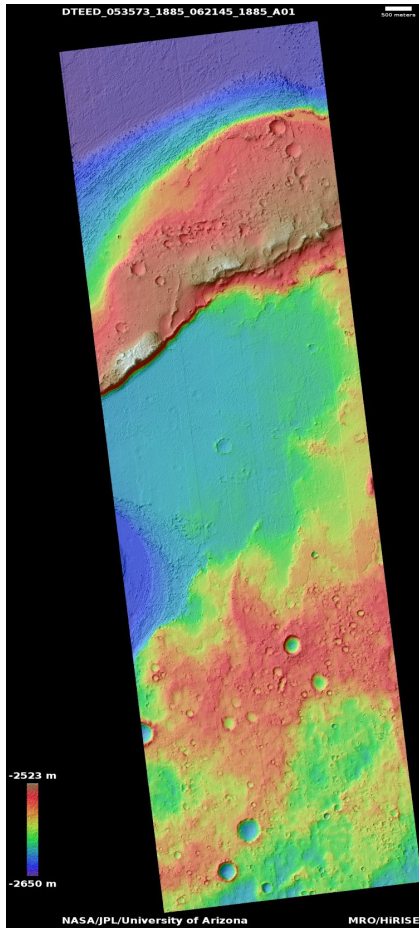
**For more details about this DTM, visit:**

[https://www.uahirise.org/dtm/ESP\\_070333\\_1970](https://www.uahirise.org/dtm/ESP_070333_1970)



# Crater near Athabasca Valles

DTEED\_053573\_1885\_062145\_1885\_A01



**Latitude:** 8.3      **Longitude:** 154.9

**DTM Producer:** UA | MAXIMUS X CABRERA

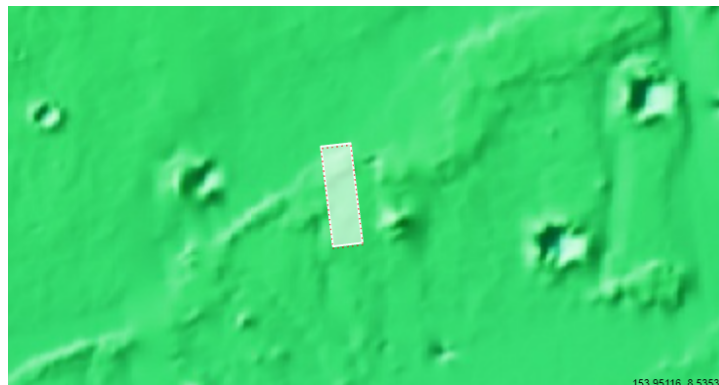
**Stereo Pair:**

ESP\_053573\_1885

ESP\_062145\_1885

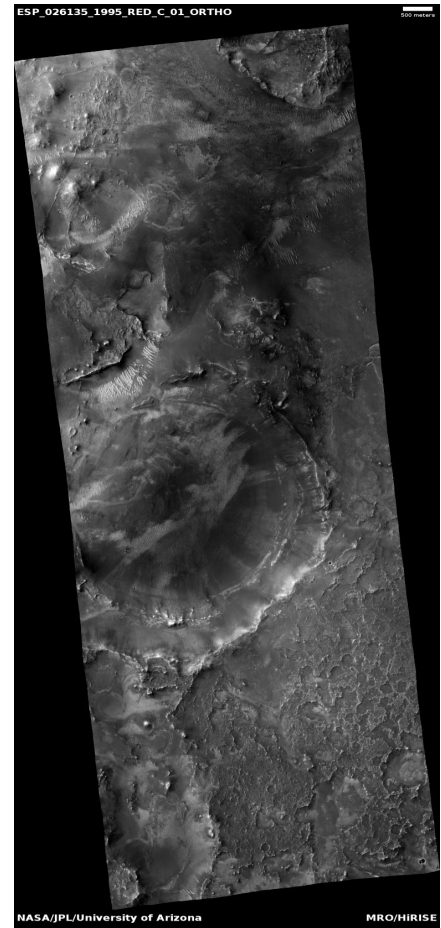
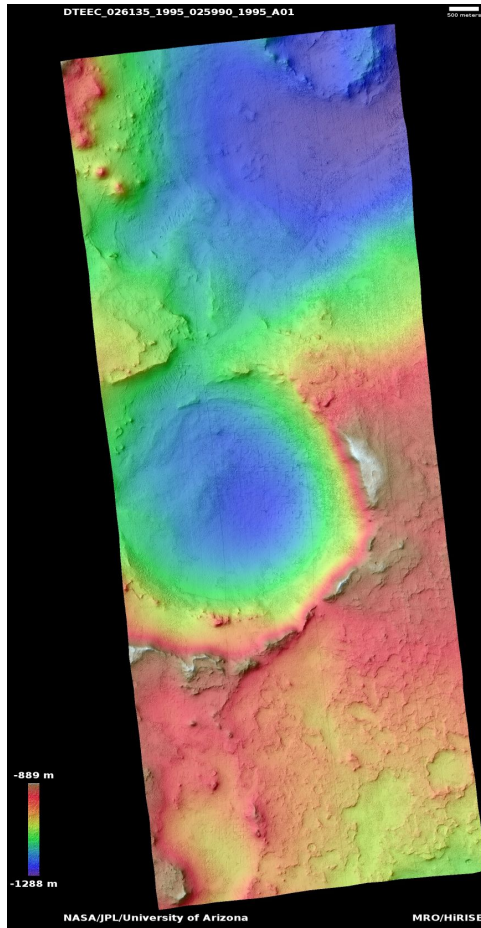
**For more details about this DTM, visit:**

[https://www.uahirise.org/dtm/ESP\\_053573\\_1885](https://www.uahirise.org/dtm/ESP_053573_1885)



# Fan with light-toned deposits

DTEEC\_026135\_1995\_025990\_1995\_A01



**Latitude:** 19.1    **Longitude:** 76.2

**DTM Producer:** UA | KRIS AMANDA AKERS

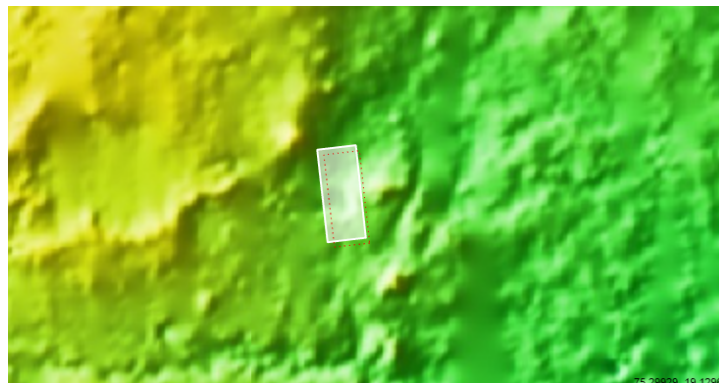
**Stereo Pair:**

ESP\_025990\_1995

ESP\_026135\_1995

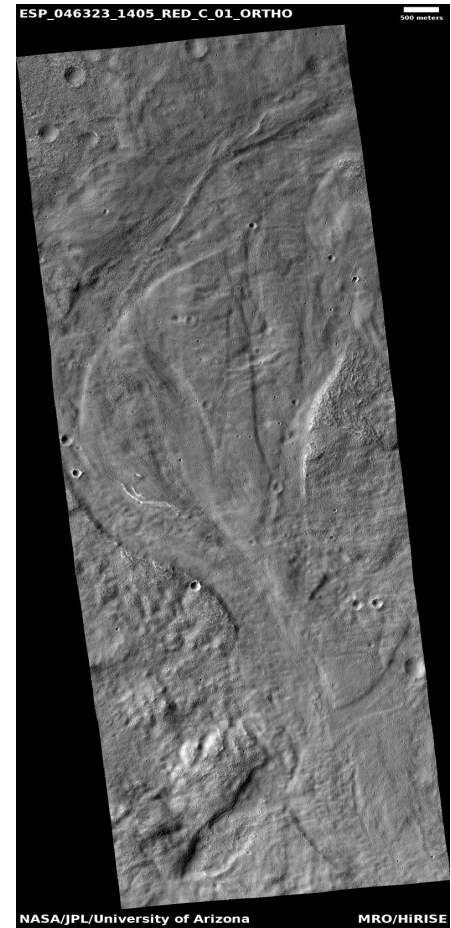
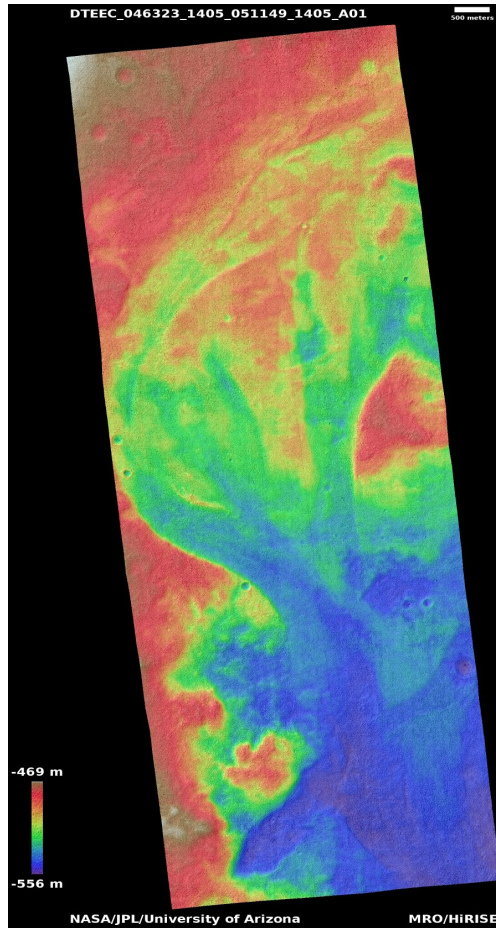
**For more details about this DTM, visit:**

[https://www.uahirise.org/dtm/ESP\\_026135\\_1995](https://www.uahirise.org/dtm/ESP_026135_1995)



# Braided channel system in eastern Hellas region

DTEEC\_046323\_1405\_051149\_1405\_A01



**Latitude:** -38.9    **Longitude:** 102.2

**DTM Producer:** UA | KRIS AMANDA AKERS

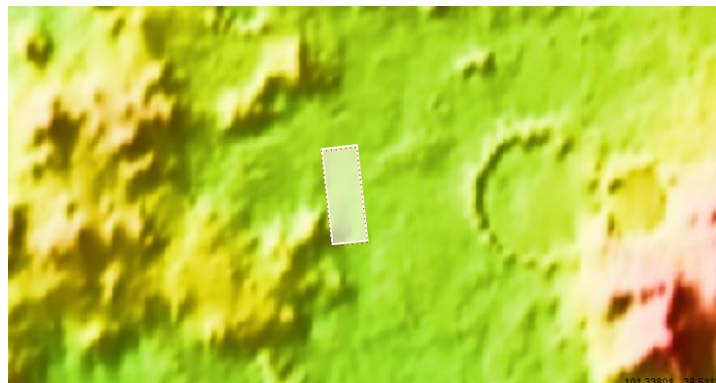
**Stereo Pair:**

ESP\_051149\_1405

ESP\_046323\_1405

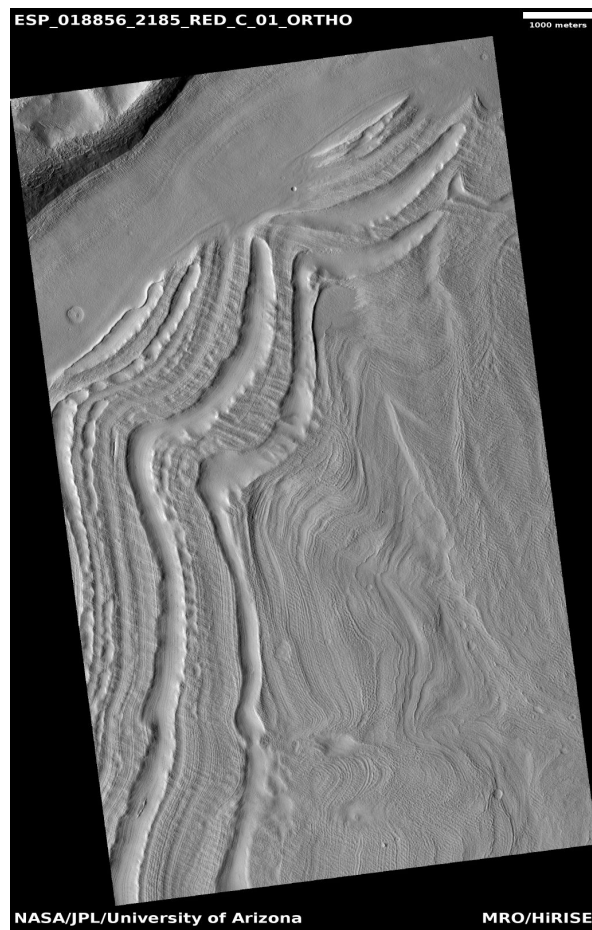
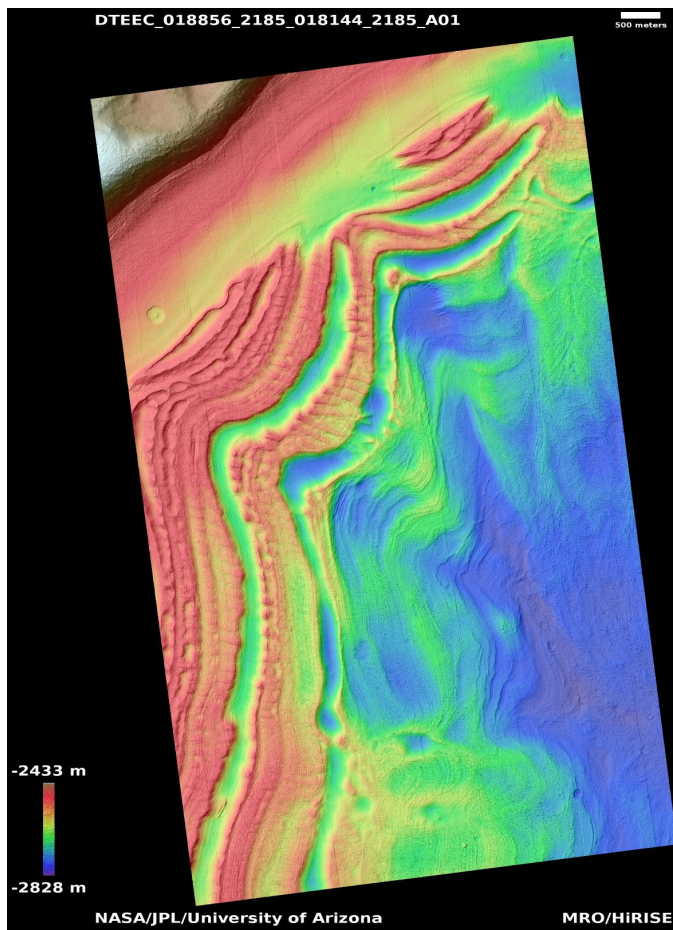
**For more details about this DTM, visit:**

[https://www.uahirise.org/dtm/ESP\\_046323\\_1405](https://www.uahirise.org/dtm/ESP_046323_1405)



# Well developed hollows and ridges in Nilosyrtris crater

DTEEC\_018856\_2185\_018144\_2185\_A01



**Latitude:** 38.0    **Longitude:** 75.6

**DTM Producer:** UA | KRIS AMANDA AKERS

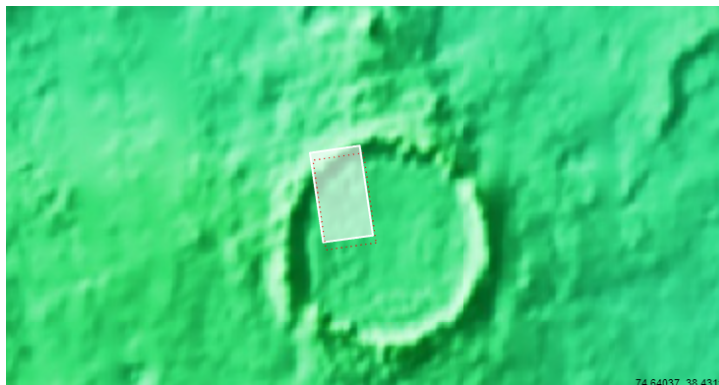
**Stereo Pair:**

ESP\_018144\_2185

ESP\_018856\_2185

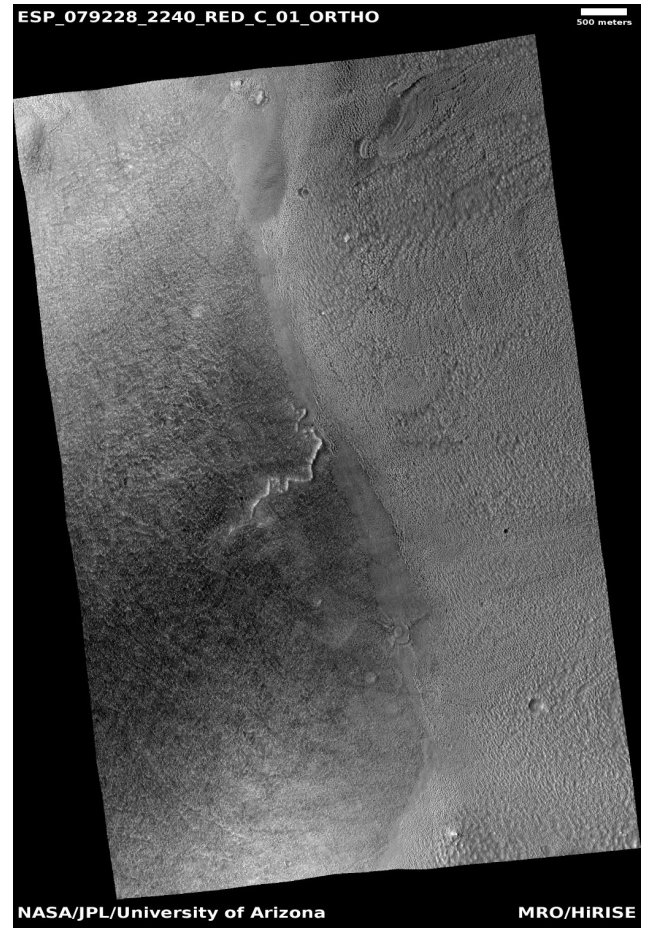
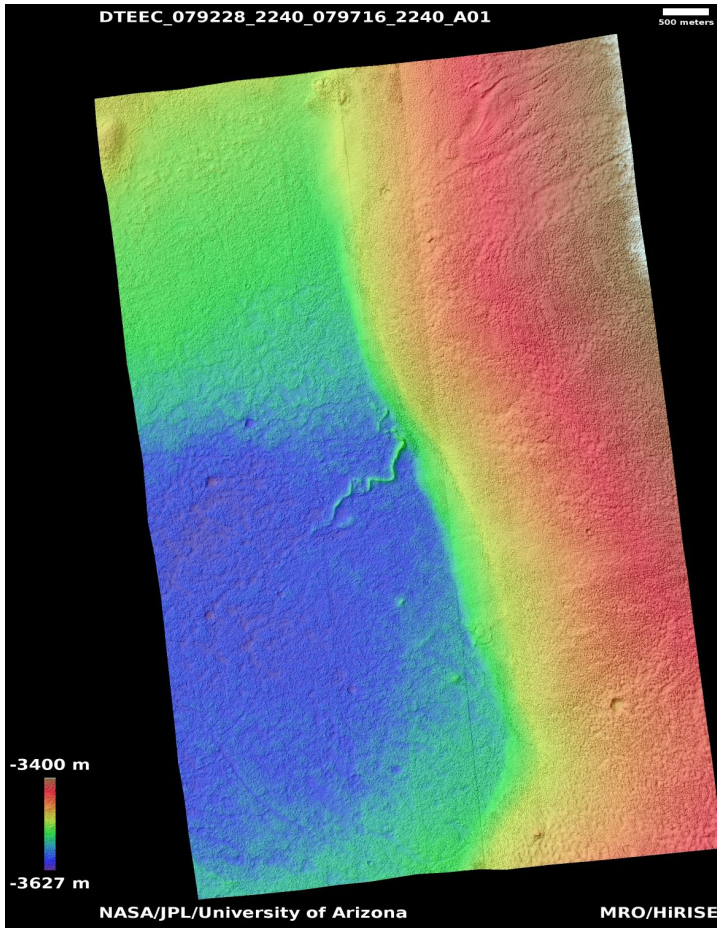
**For more details about this DTM, visit:**

[https://www.uahirise.org/dtm/ESP\\_018856\\_2185](https://www.uahirise.org/dtm/ESP_018856_2185)



# Ridged flow-like features in Deuteronilus Mensae

DTEEC\_079228\_2240\_079716\_2240\_A01



**Latitude:** 43.4    **Longitude:** 28.3

**DTM Producer:** UA | KRIS AMANDA AKERS

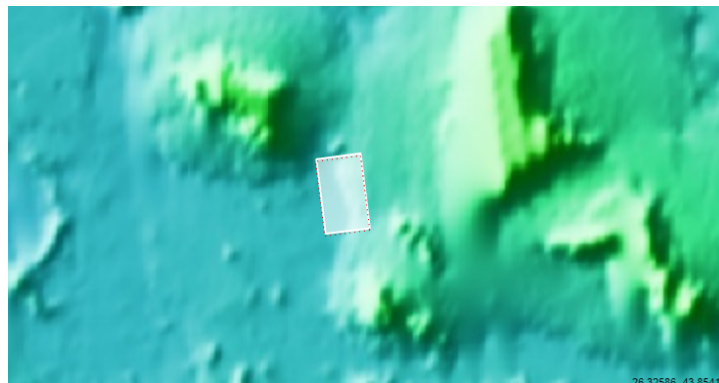
**Stereo Pair:**

ESP\_079228\_2240

ESP\_079716\_2240

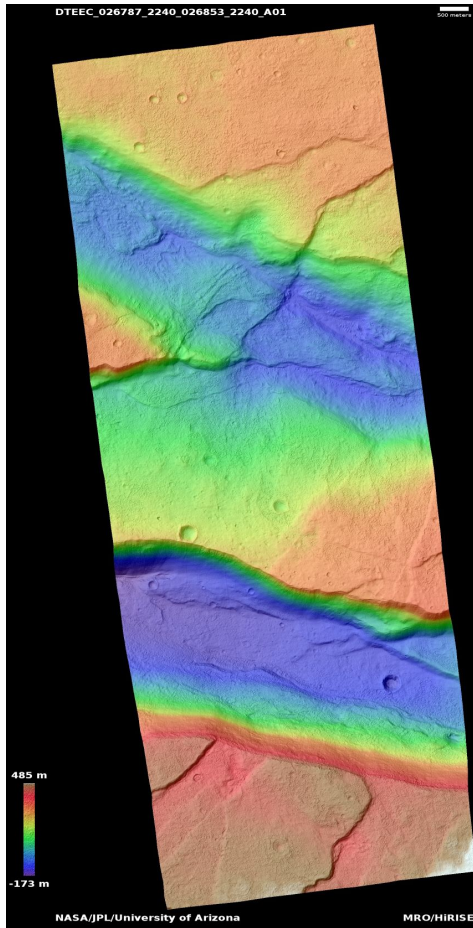
**For more details about this DTM, visit:**

[https://www.uahirise.org/dtm/ESP\\_079228\\_2240](https://www.uahirise.org/dtm/ESP_079228_2240)



# Complex superposition of fractures

DTEEC\_026787\_2240\_026853\_2240\_A01



**Latitude:** 43.5    **Longitude:** 270.4

**DTM Producer:** UA | KRIS AMANDA AKERS

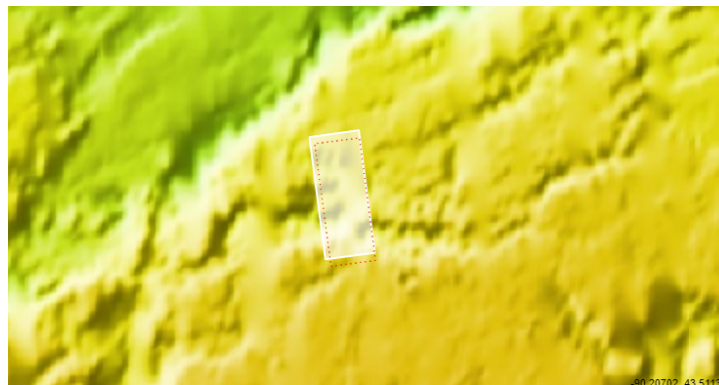
**Stereo Pair:**

ESP\_026787\_2240

ESP\_026853\_2240

**For more details about this DTM, visit:**

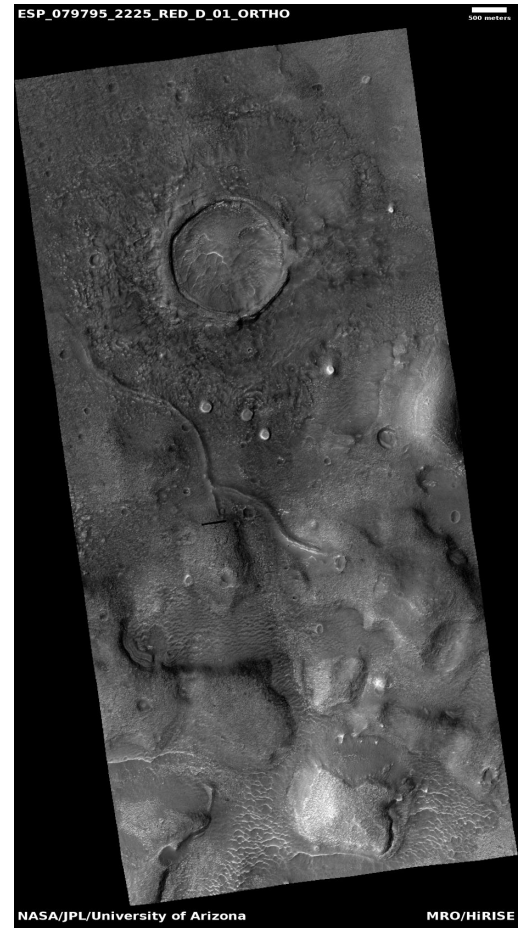
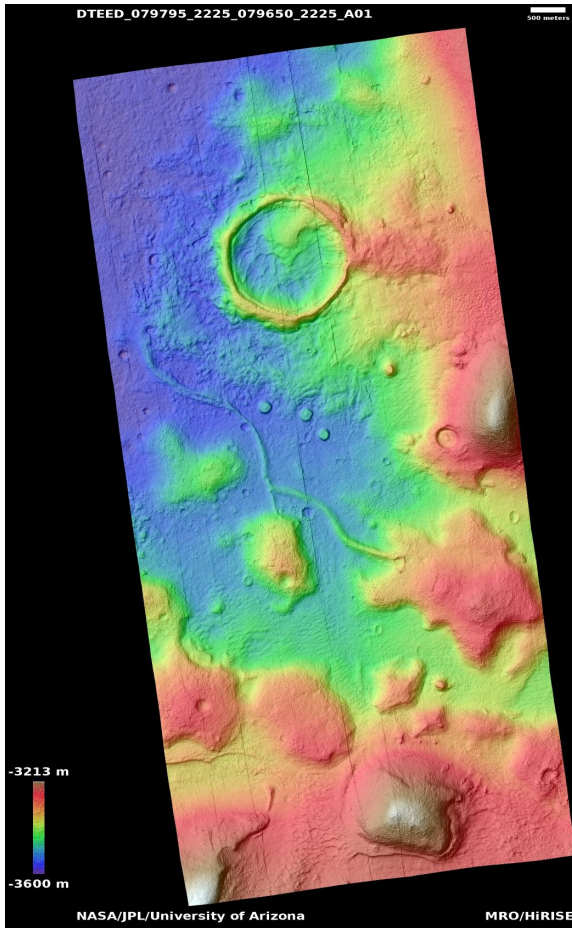
[https://www.uahirise.org/dtm/ESP\\_026787\\_2240](https://www.uahirise.org/dtm/ESP_026787_2240)





# Ridged flow-like features in Deuteronilus Mensae

DTEED\_079795\_2225\_079650\_2225\_A01



**Latitude:** 42.0    **Longitude:** 27.6

**DTM Producer:** UA | KRIS AMANDA AKERS

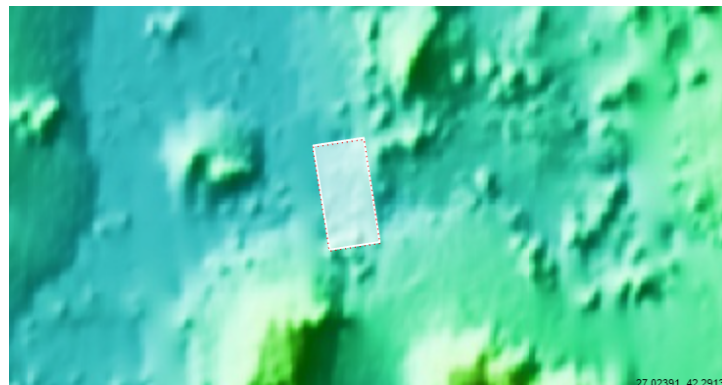
**Stereo Pair:**

ESP\_079650\_2225

ESP\_079795\_2225

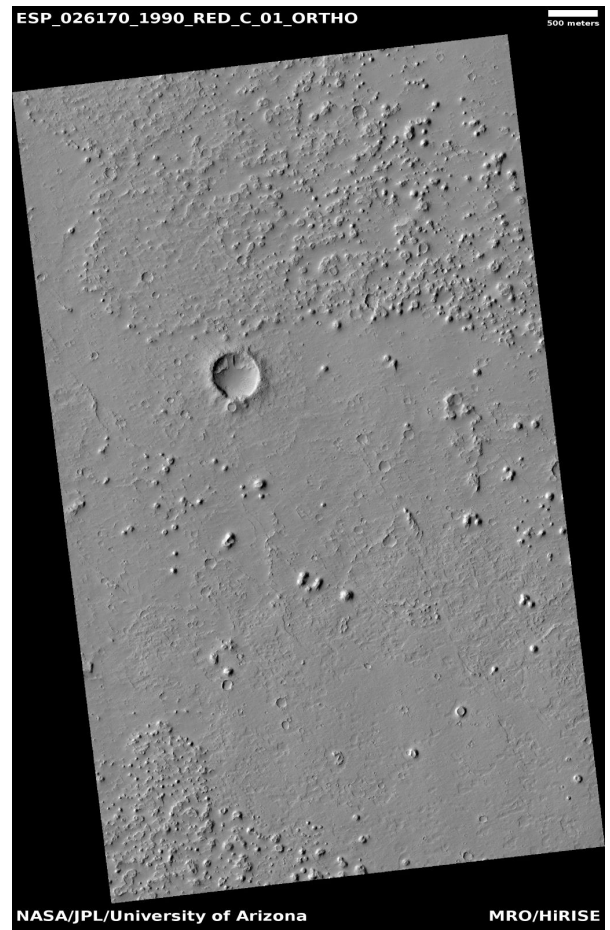
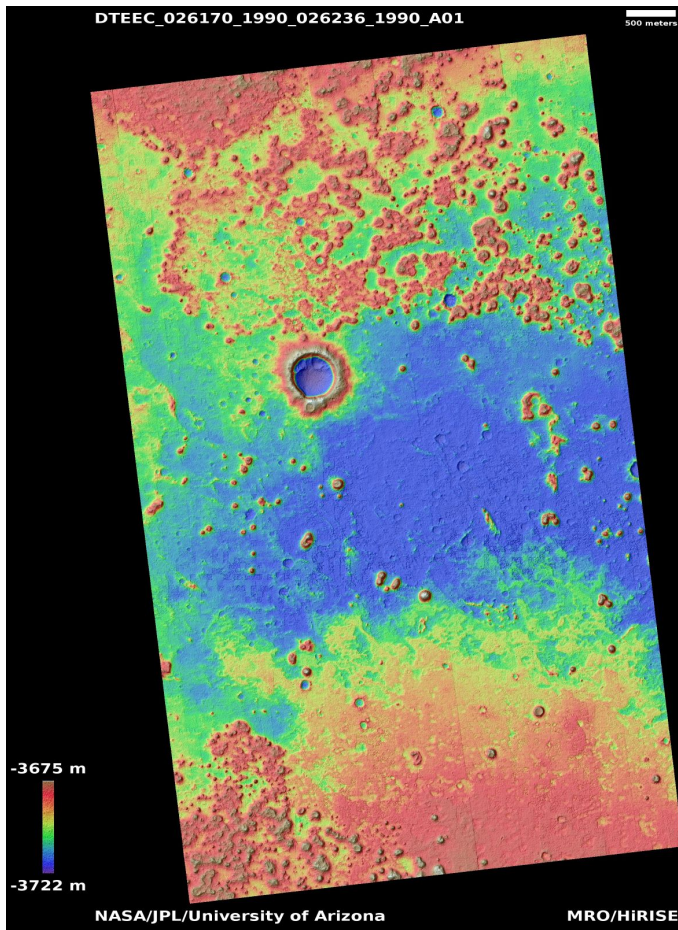
**For more details about this DTM, visit:**

[https://www.uahirise.org/dtm/ESP\\_079795\\_2225](https://www.uahirise.org/dtm/ESP_079795_2225)



# Rootless cone intersecting crater rim

DTEEC\_026170\_1990\_026236\_1990\_A01



**Latitude:** 18.9    **Longitude:** 197.6

**DTM Producer:** UA | BRANDEN M GOSSE

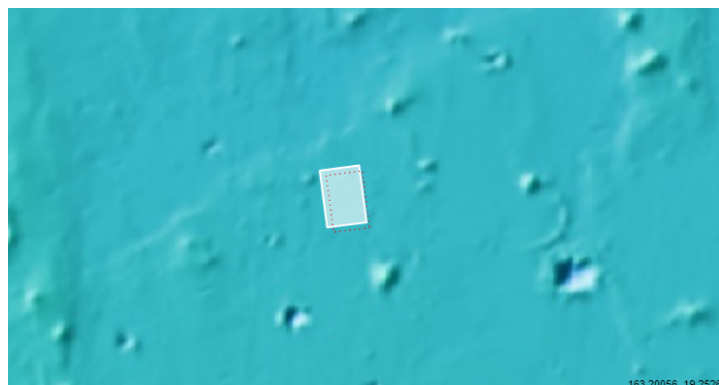
**Stereo Pair:**

ESP\_026236\_1990

ESP\_026170\_1990

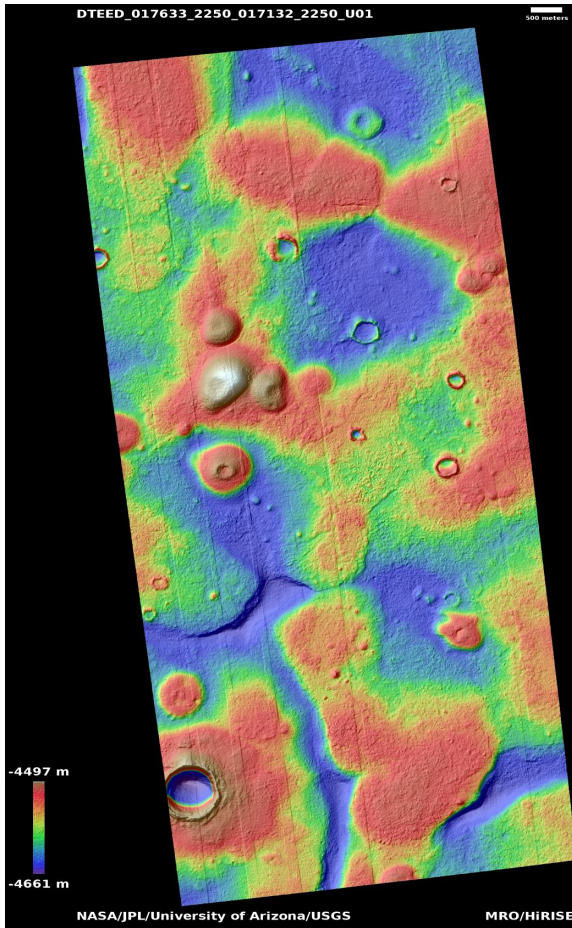
**For more details about this DTM, visit:**

[https://www.uahirise.org/dtm/ESP\\_026170\\_1990](https://www.uahirise.org/dtm/ESP_026170_1990)



# Light-toned mounds in Acidalia Planitia

DTEED\_017633\_2250\_017132\_2250\_U01



**Latitude:** 44.4    **Longitude:** 346.0

**DTM Producer:** USGS | USGS-ASTROGEOLOGY

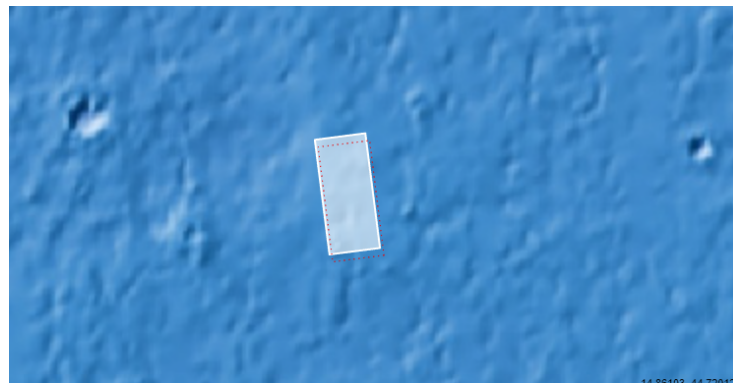
**Stereo Pair:**

ESP\_017633\_2250

ESP\_017132\_2250

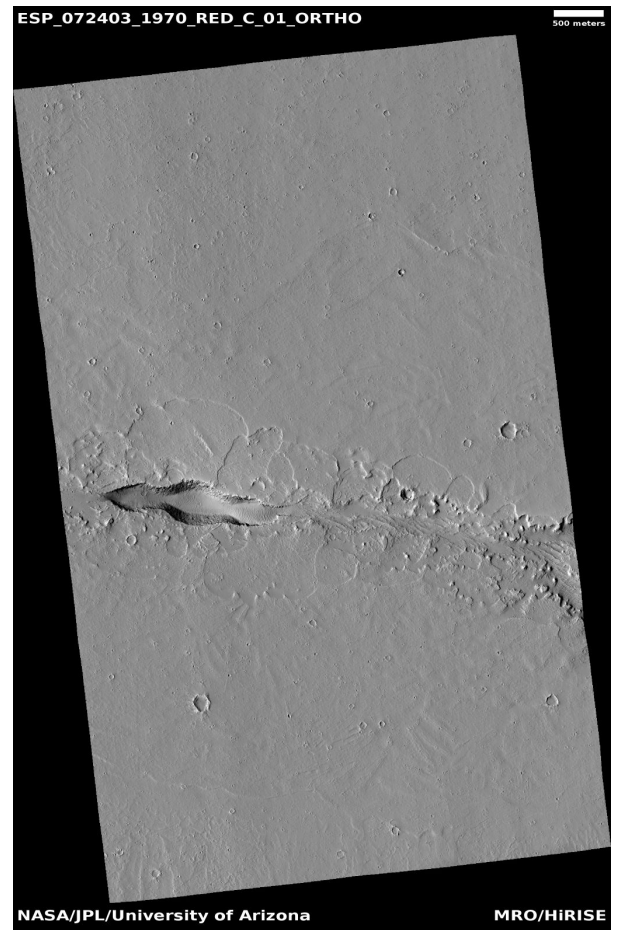
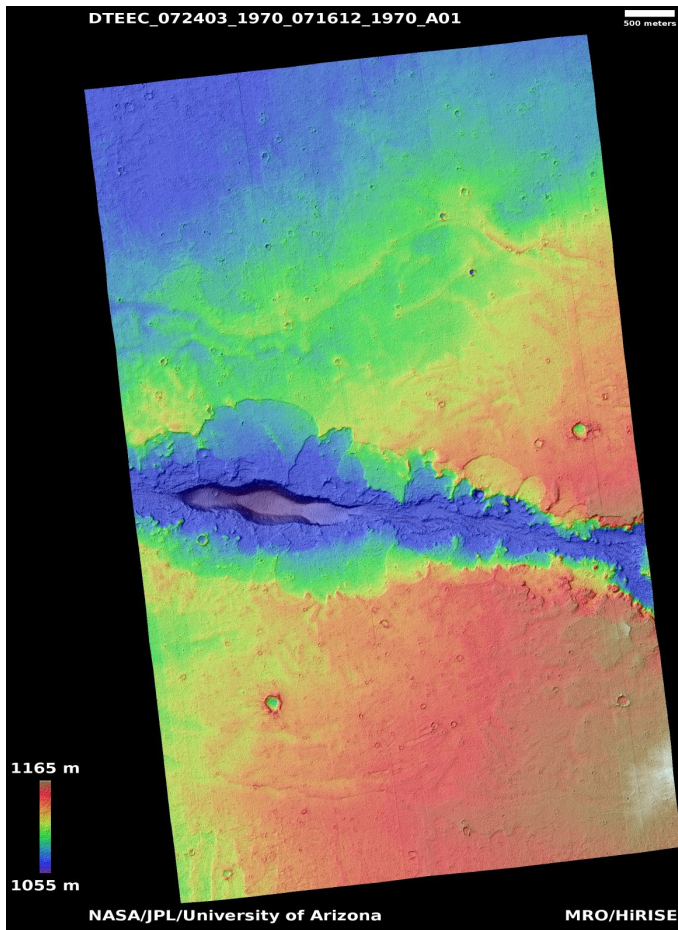
**For more details about this DTM, visit:**

[https://www.uahirise.org/dtm/ESP\\_017633\\_2250](https://www.uahirise.org/dtm/ESP_017633_2250)



# Fissure vent in Gordii Fossae

DTEEC\_072403\_1970\_071612\_1970\_A01



**Latitude:** 16.7    **Longitude:** 232.6

**DTM Producer:** UA | KRIS AMANDA AKERS

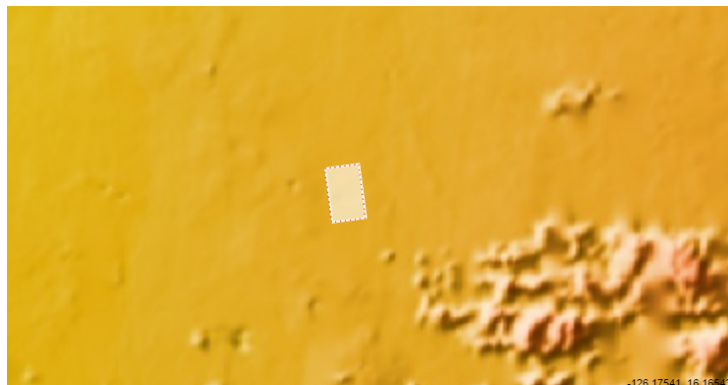
**Stereo Pair:**

ESP\_072403\_1970

ESP\_071612\_1970

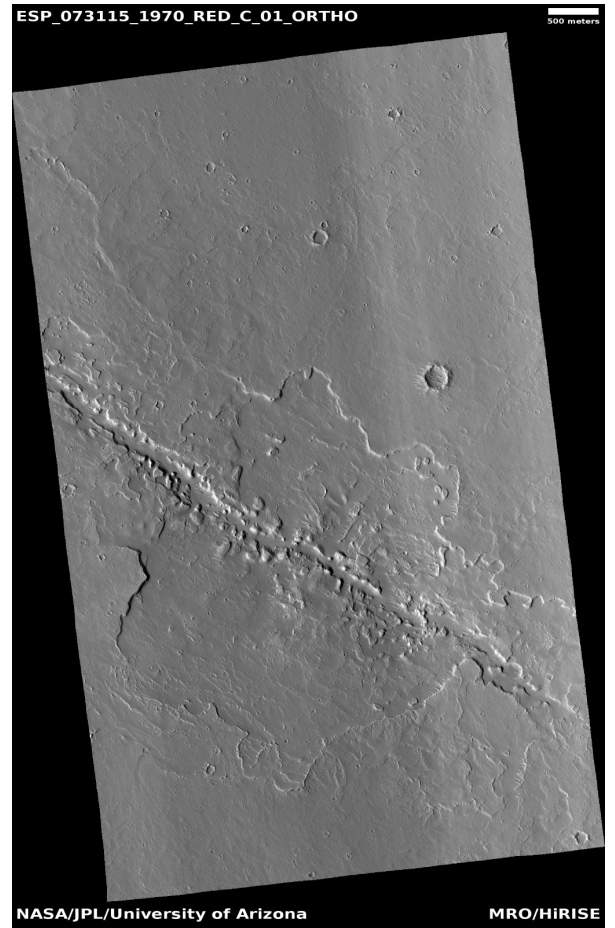
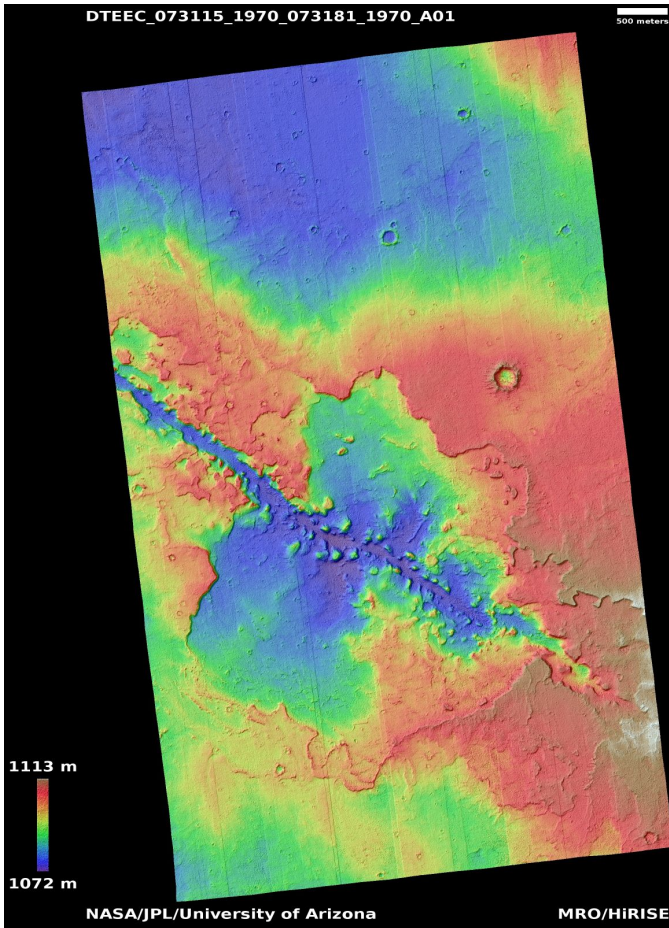
**For more details about this DTM, visit:**

[https://www.uahirise.org/dtm/ESP\\_072403\\_1970](https://www.uahirise.org/dtm/ESP_072403_1970)



# Shallow vent east of Olympus Mons

DTEEC\_073115\_1970\_073181\_1970\_A01



**Latitude:** 16.7    **Longitude:** 232.6

**DTM Producer:** UA | KRIS AMANDA AKERS

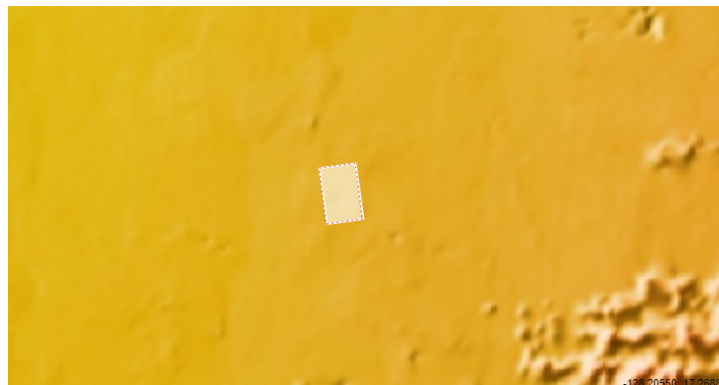
**Stereo Pair:**

ESP\_073115\_1970

ESP\_073181\_1970

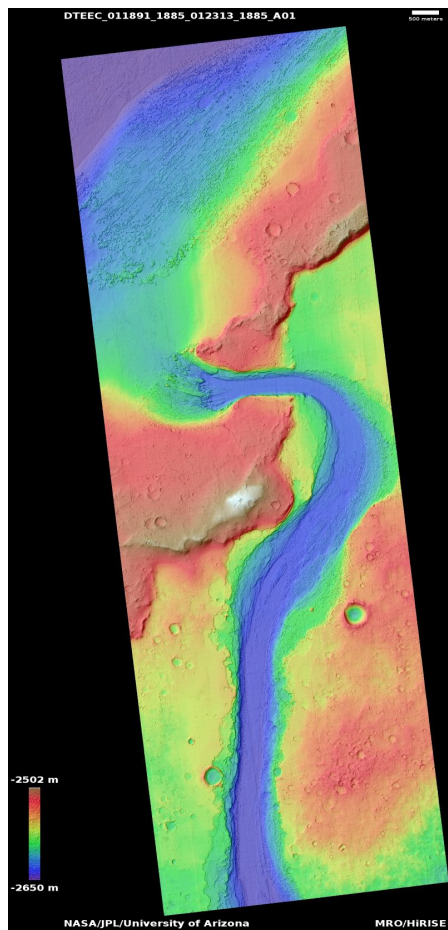
**For more details about this DTM, visit:**

[https://www.uahirise.org/dtm/ESP\\_073115\\_1970](https://www.uahirise.org/dtm/ESP_073115_1970)



# Cataracts at the proximal ends of distributaries in Athabasca Valles

DTEEC\_011891\_1885\_012313\_1885\_A01



**Latitude:** 8.3      **Longitude:** 154.9

**DTM Producer:** UA | MAXIMUS X CABRERA

**Stereo Pair:**

ESP\_012313\_1885

ESP\_011891\_1885

**For more details about this DTM, visit:**

[https://www.uahirise.org/dtm/ESP\\_011891\\_1885](https://www.uahirise.org/dtm/ESP_011891_1885)

