



**HIGH RESOLUTION IMAGING
SCIENCE EXPERIMENT**



DTM PDS RELEASES

May 2020

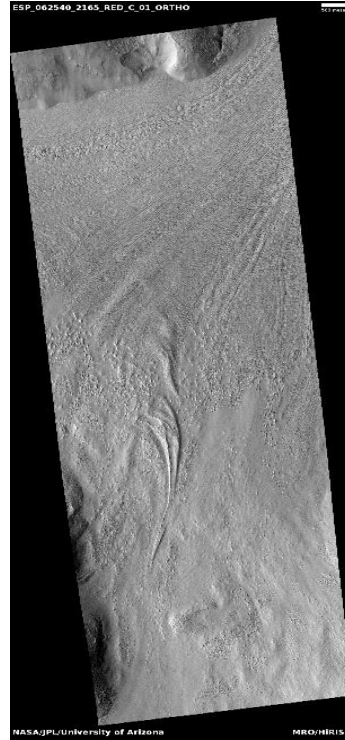
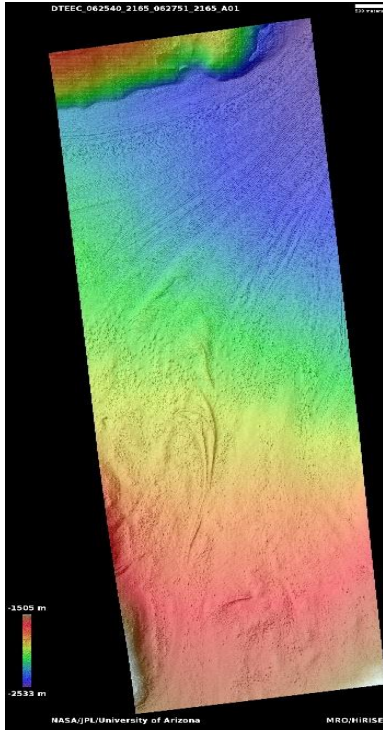
Edited by Kris Akers | UA

DTMs Included this Month

Smooth apron in Phlegra Montes.....	1
Complex banded flow terrain on floor of Hellas.....	2
Layering in Burroughs Crater.....	3
Ultimum Chasma south polar layers.....	4

Smooth apron in Phlegra Montes

DTEEC_062540_2165_062751_2165_A01



36.4°N 162.3°E

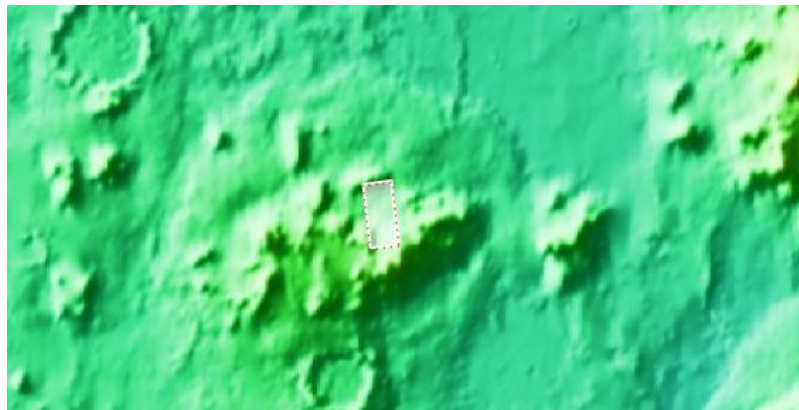
DTM Producer: UA | Riley McClurkin

Stereo Pair:

ESP_062540_2165

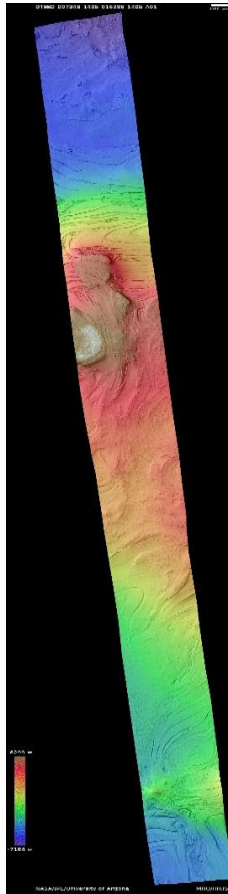
ESP_062751_2165

For more details about this DTM, visit:
https://www.uahirise.org/dtm/dtm.php?ID=ESP_062540_2165



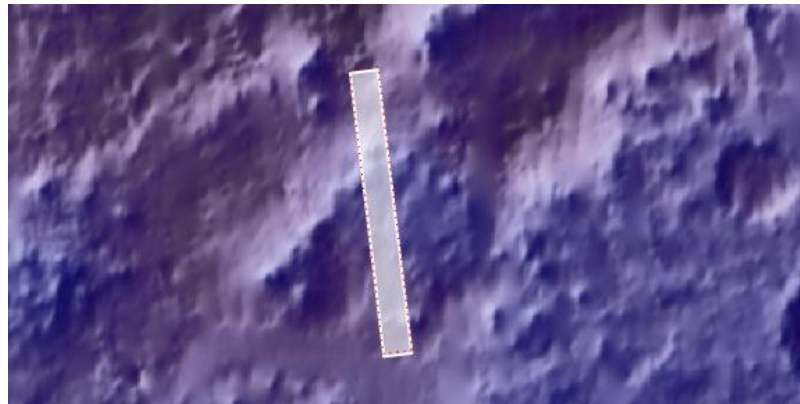
Complex banded flow terrain on floor of Hellas

DTEED_007346_1405_016286_1405_A01



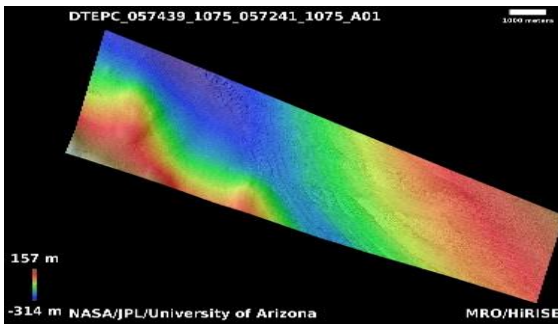
39.2°S 54.8°E
DTM Producer: UA | Daniel Robinson
Stereo Pair:
PSP_007346_1405
ESP_016286_1405

For more details about this DTM, visit:
https://www.uahirise.org/dtm/dtm.php?ID=PSP_007346_1405



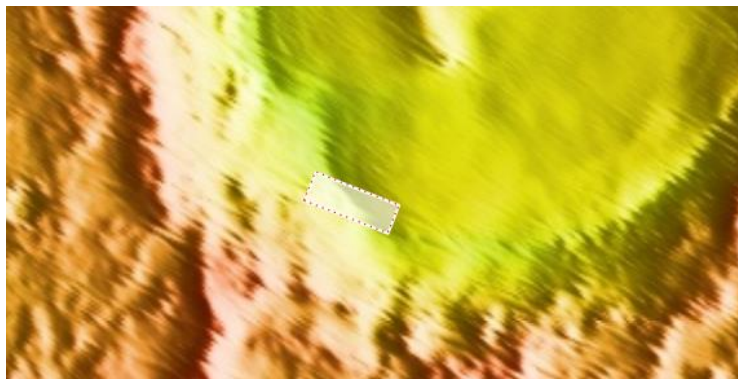
Layering in Burroughs Crater

DTEPC_057439_1075_057241_1075_A01



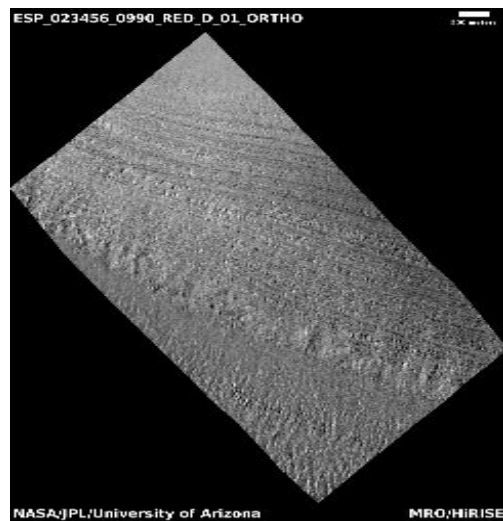
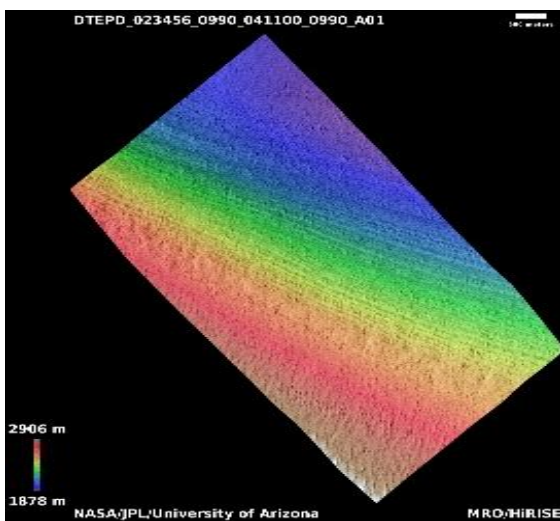
72.3°S 118.9°E
DTM Producer: UA | Riley McClurkin
Stereo Pair:
ESP_057439_1075
ESP_057241_1075

For more details about this DTM, visit:
https://www.uahirise.org/dtm/dtm.php?ID=ESP_057439_1075



Ultimum Chasma south polar layers

DTEPD_023456_0990_041100_0990_A01



80.6°S 155.1°E

DTM Producer: UA | Daniel Robinson

Stereo Pair:

ESP_023456_0990

ESP_041100_0990

For more details about this DTM, visit:
https://www.uahirise.org/dtm/dtm.php?ID=ESP_023456_0990

