



HIGH RESOLUTION IMAGING SCIENCE EXPERIMENT



DTM PDS RELEASES

March 2024

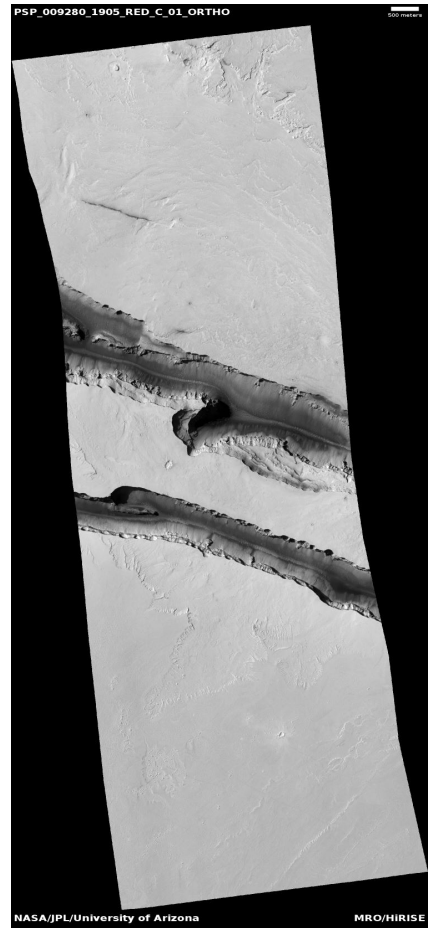
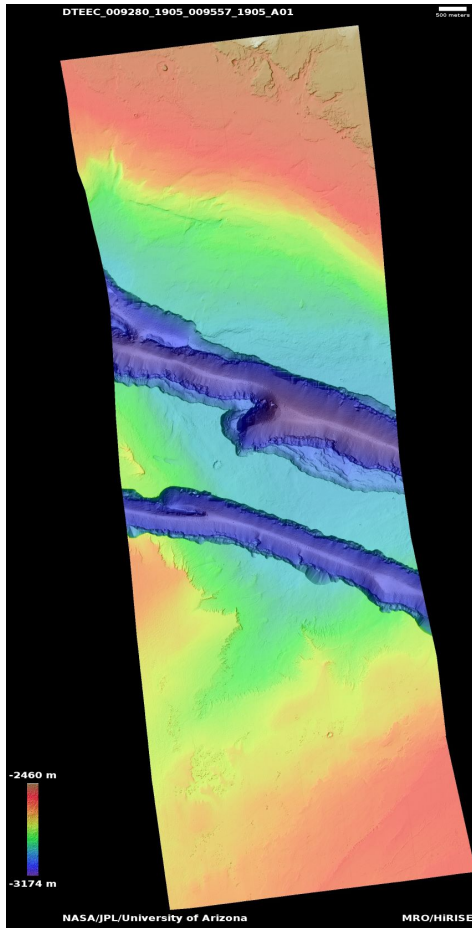
Edited by Kris Akers | UA

DTMs Included this Month

Athabasca Valles	1
Cone at the source of Athabasca Valles	2
Landslide in Hydraotes Chaos	3
Southern Gale Crater strata with possible sulfates and clays	4
Features of large lobe northwest of Pavonis Mons	5
Steep north-polar boundary scarp	6
Southern Gale Crater strata with possible sulfates and clays	7
Candidate MSL landing site in Gale Crater	8

Athabasca Valles

DTEEC_009280_1905_009557_1905_A01



Latitude: 10.3 **Longitude:** 156.9

DTM Producer: UA | BRANDEN M GOSSE

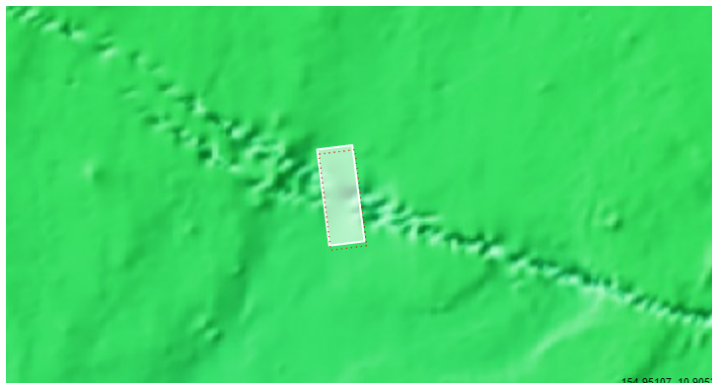
Stereo Pair:

PSP_009557_1905

PSP_009280_1905

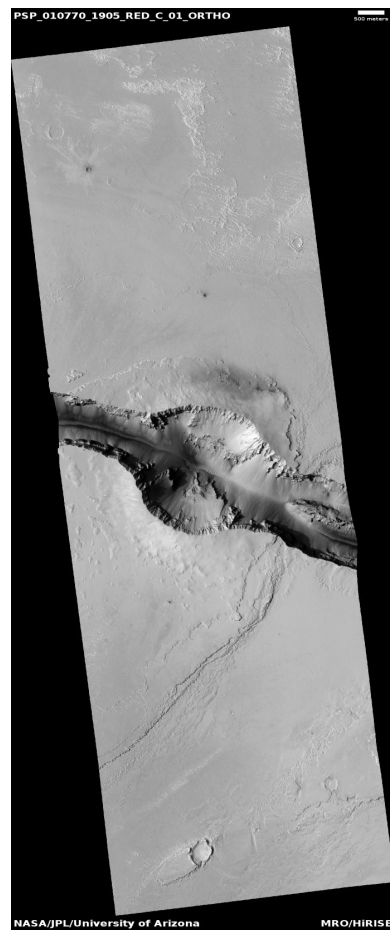
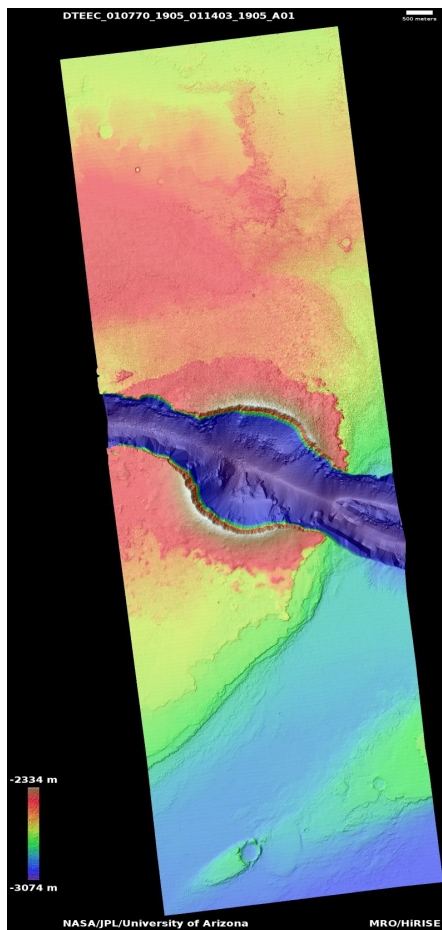
For more details about this DTM, visit:

https://www.uahirise.org/dtm/PSP_009280_1905



Cone at the source of Athabasca Valles

DTEEC_010770_1905_011403_1905_A01



Latitude: 10.2 **Longitude:** 157.4

DTM Producer: UA | BRANDEN M GOSSE

Stereo Pair:

PSP_010770_1905

ESP_011403_1905

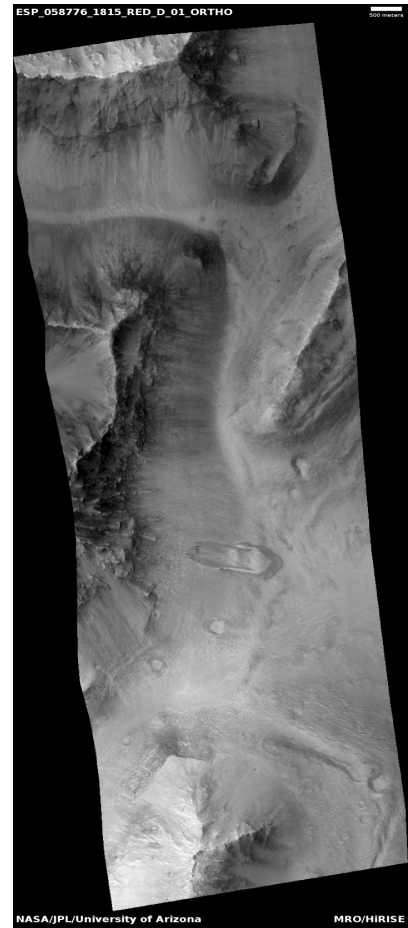
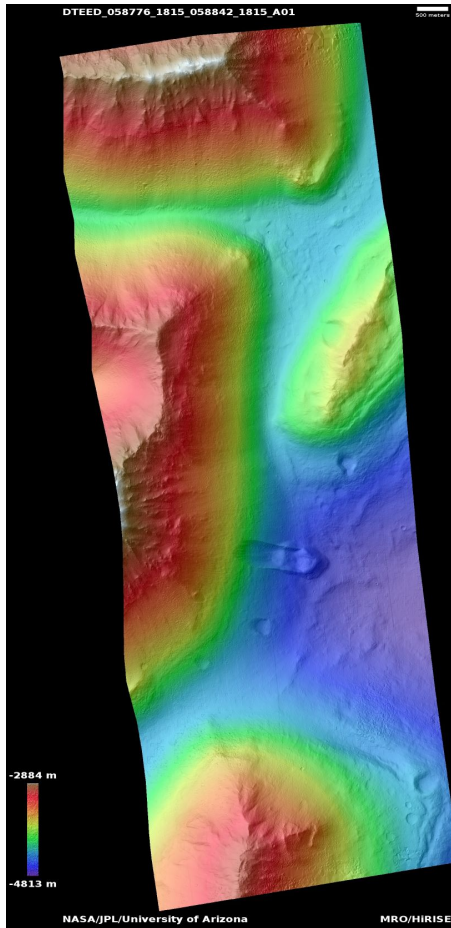
For more details about this DTM, visit:

https://www.uahirise.org/dtm/PSP_010770_1905



Landslide in Hydraotes Chaos

DTEED_058776_1815_058842_1815_A01



Latitude: 1.5 **Longitude:** 324.2

DTM Producer: UA | KRIS AMANDA AKERS

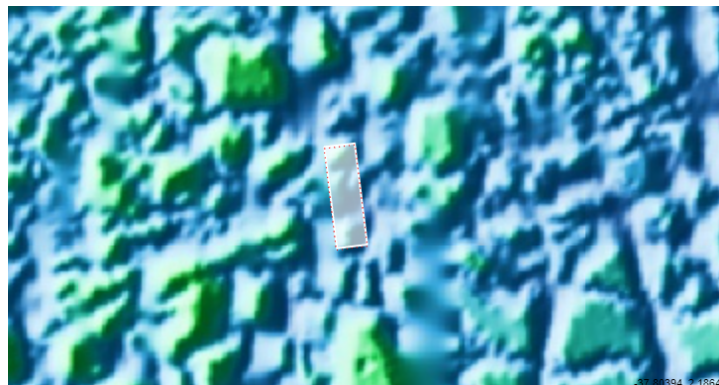
Stereo Pair:

ESP_058842_1815

ESP_058776_1815

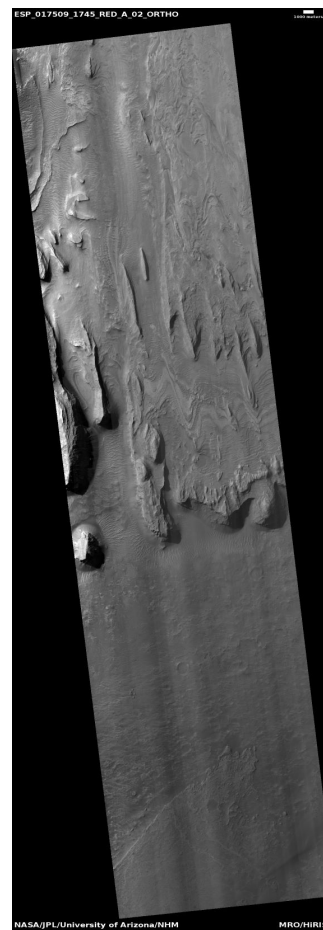
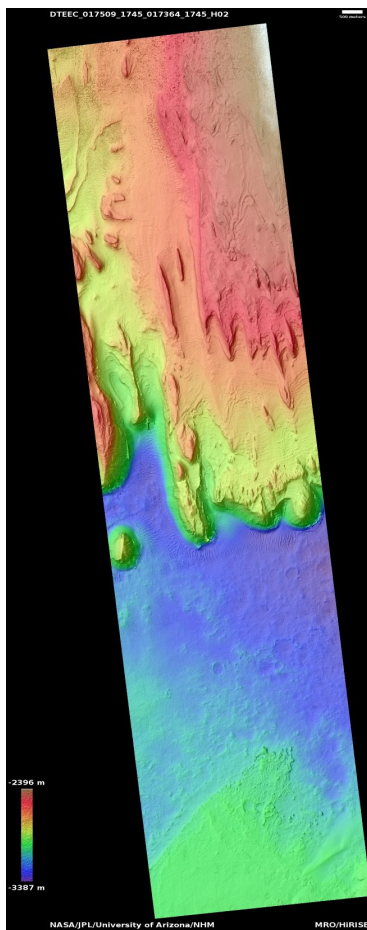
For more details about this DTM, visit:

https://www.uahirise.org/dtm/ESP_058776_1815



Southern Gale Crater strata with possible sulfates and clays

DTEEC_017509_1745_017364_1745_H02



Latitude: -5.6 **Longitude:** 138.3

DTM Producer: NHM | JOEL DAVIS

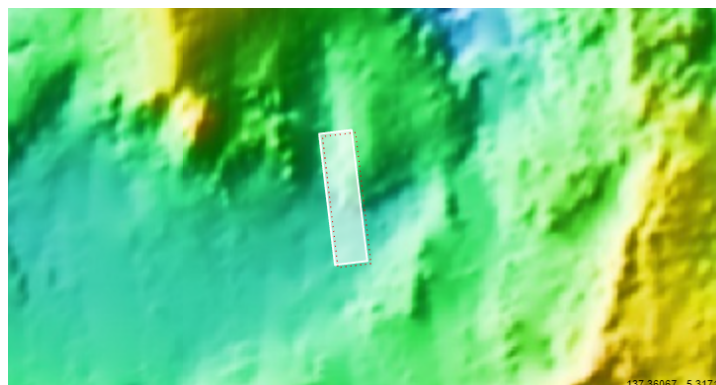
Stereo Pair:

ESP_017509_1745

ESP_017364_1745

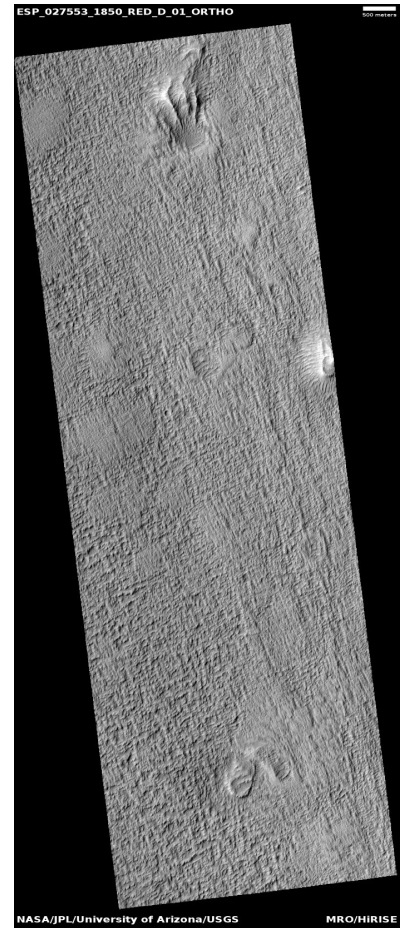
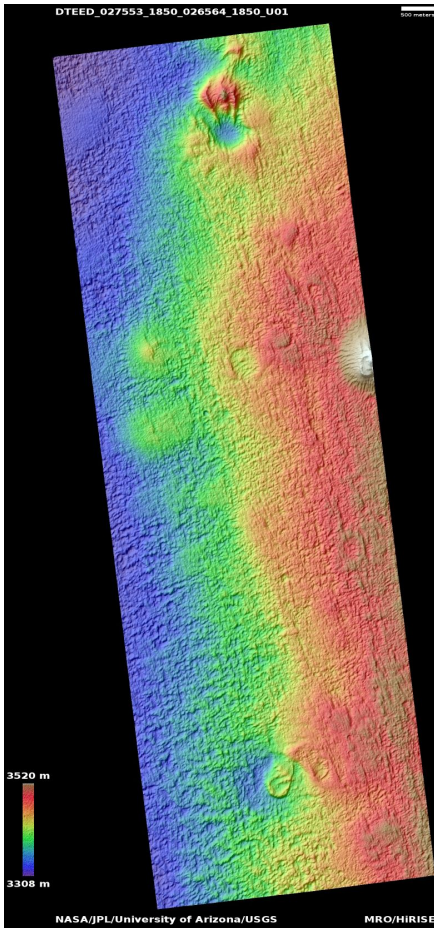
For more details about this DTM, visit:

https://www.uahirise.org/dtm/ESP_017509_1745



Features of large lobe northwest of Pavonis Mons

DTEED_027553_1850_026564_1850_U01



Latitude: 5.1 **Longitude:** 245.0

DTM Producer: USGS | USGS Astrogeology

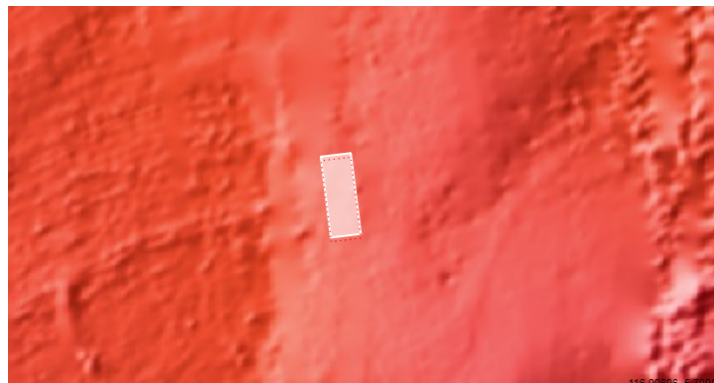
Stereo Pair:

ESP_026564_1850

ESP_027553_1850

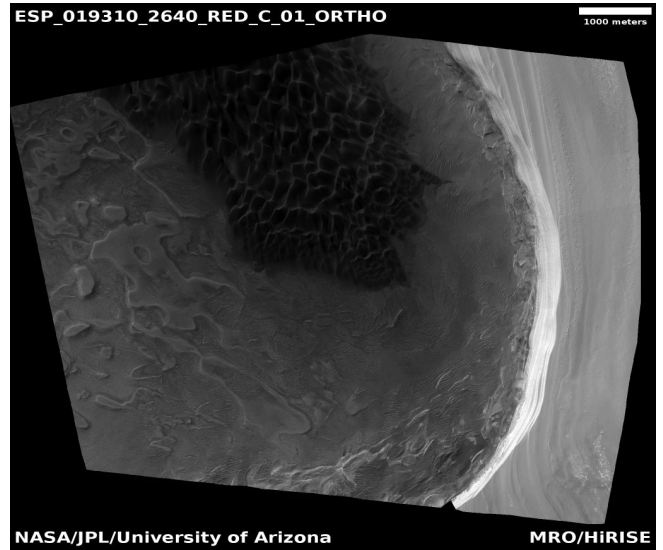
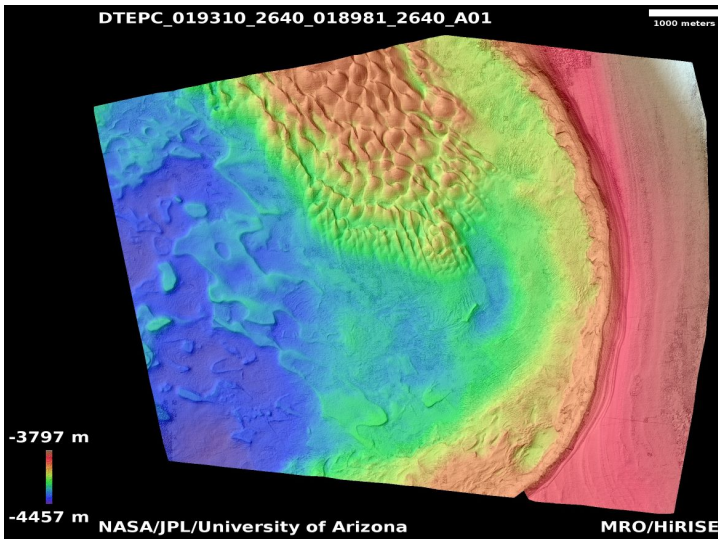
For more details about this DTM, visit:

https://www.uahirise.org/dtm/ESP_027553_1850



Steep north-polar boundary scarp

DTEPC_019310_2640_018981_2640_A01



Latitude: 83.8 **Longitude:** 236.5

DTM Producer: UA | KRIS AMANDA AKERS

Stereo Pair:

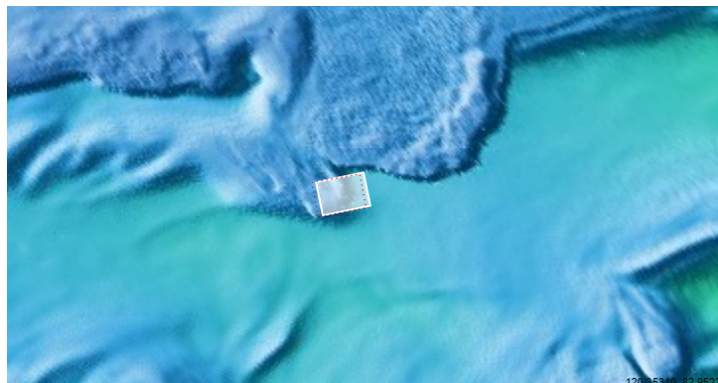
ESP_019310_2640
ESP_018981_2640

For more details about this DTM, visit:

https://www.uahirise.org/dtm/ESP_019310_2640

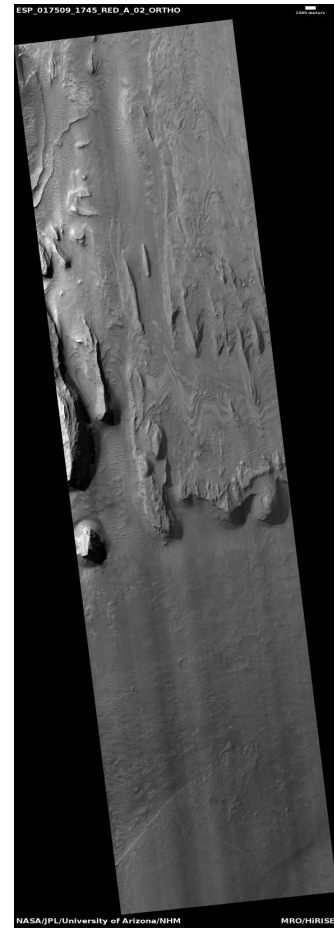
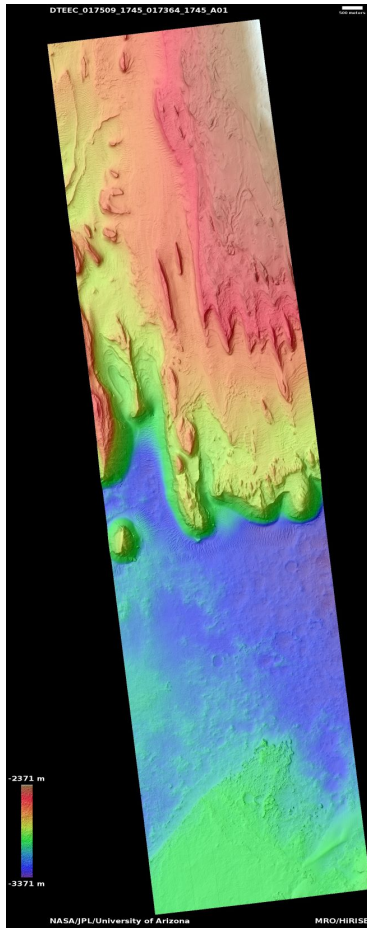
Additional Orthos:

ESP_027539_2640
ESP_037099_2640
ESP_062866_2640
ESP_017860_2640
PSP_009236_2640



Southern Gale Crater strata with possible sulfates and clays

DTEEC_017509_1745_017364_1745_A01



Latitude: -5.6 **Longitude:** 138.3

DTM Producer: UA | MAXIMUS X CABRERA

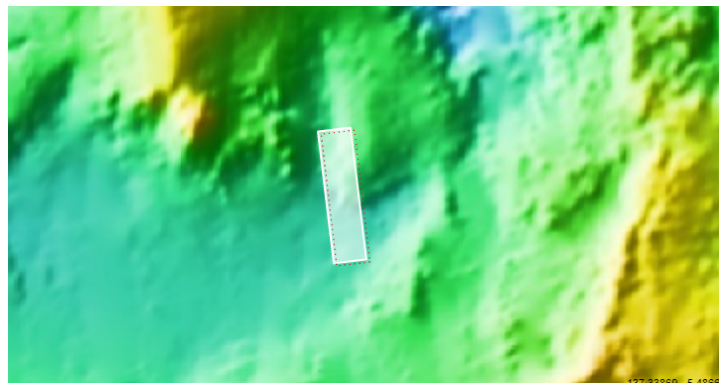
Stereo Pair:

ESP_017364_1745

ESP_017509_1745

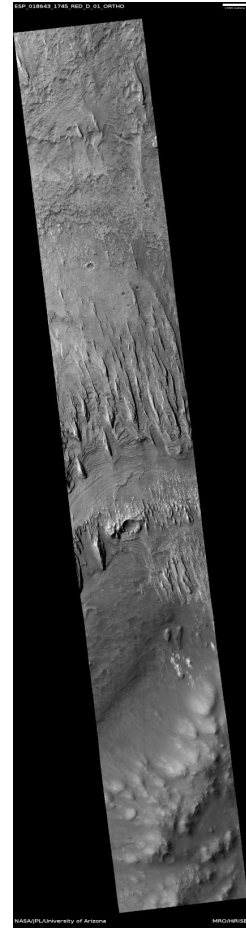
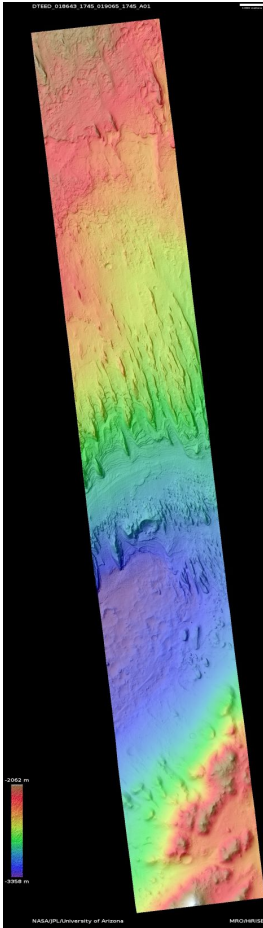
For more details about this DTM, visit:

https://www.uahirise.org/dtm/ESP_017509_1745



Candidate MSL landing site in Gale Crater

DTEED_018643_1745_019065_1745_A01



Latitude: -5.4 **Longitude:** 138.4

DTM Producer: UA | KRIS AMANDA AKERS

Stereo Pair:

ESP_019065_1745

ESP_018643_1745

For more details about this DTM, visit:

https://www.uahirise.org/dtm/ESP_018643_1745

