



**HIGH RESOLUTION IMAGING
SCIENCE EXPERIMENT**



DTM PDS RELEASES

March 2020

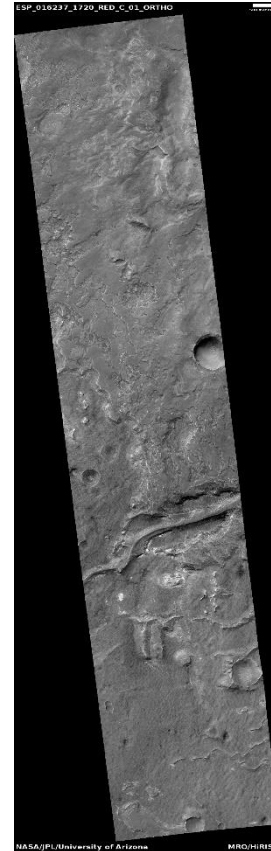
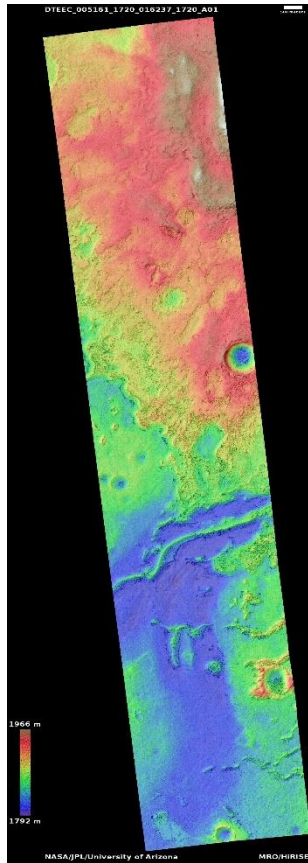
Edited by Daniel Robinson | UA

DTMs Included this Month

Light-toned layering on plains next to Ganges.....	1
Southern continuous ejecta boundary of Resen.....	2
Smooth area in Phlegra Montes.....	3
Alluvial Fans in Unnamed Crater.....	4

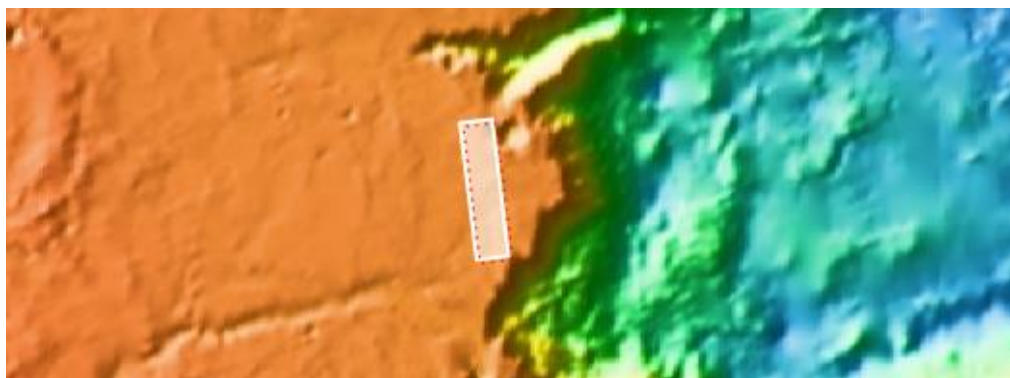
Light-toned layering on plains next to Ganges

DTEEC_005161_1720_016237_1720_A01



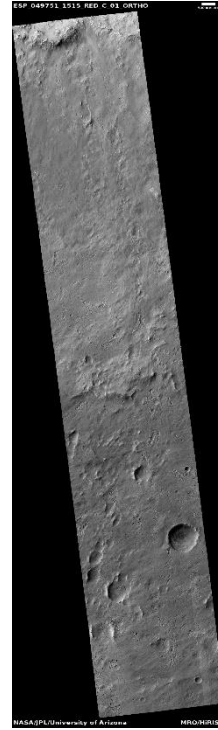
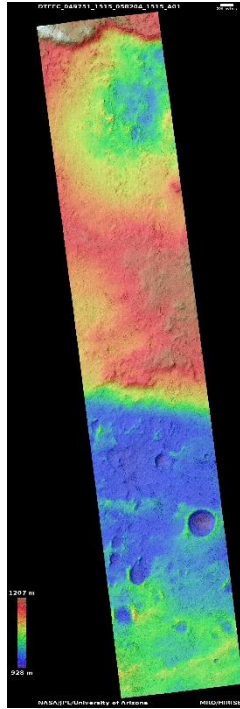
8.14°S 307.3°E
DTM Producer: UA | Riley McClurkin
Stereo Pair:
PSP_005161_1720
ESP_016237_1720

For more details about this DTM, visit:
https://www.uahirise.org/dtm/dtm.php?ID=PSP_005161_1720



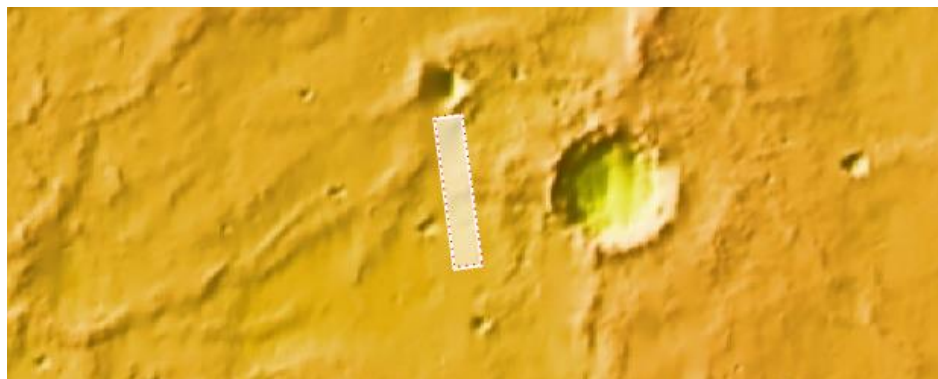
Southern continuous ejecta boundary of Resen

DTEEC_049751_1515_058204_1515_A01



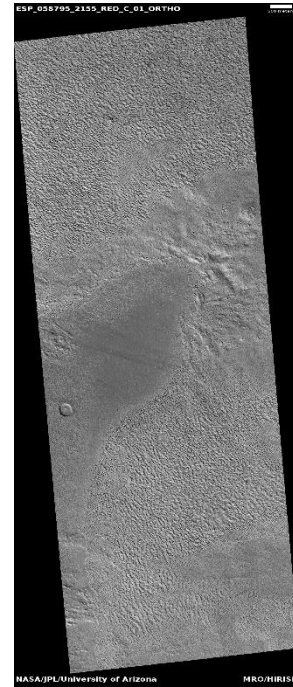
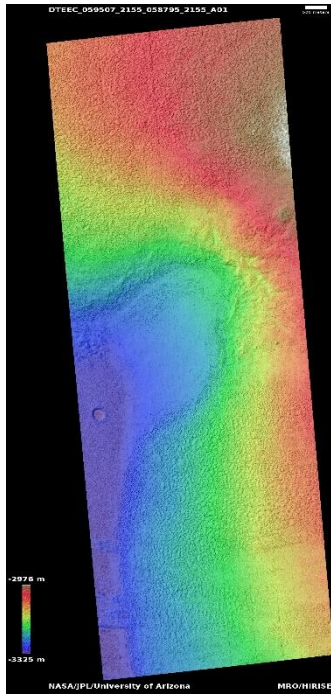
28.3°S 108.9°E
DTM Producer: UA | Christine Akers
Stereo Pair:
ESP_049751_1515
ESP_058204_1515

For more details about this DTM, visit:
https://www.uahirise.org/dtm/dtm.php?ID=ESP_049751_1515



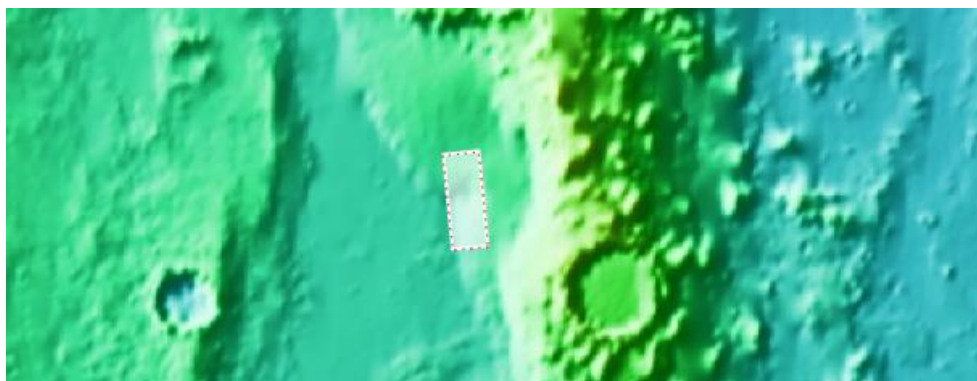
Smooth area in Phlegra Montes

DTEEC_059507_2155_058795_2155_A01



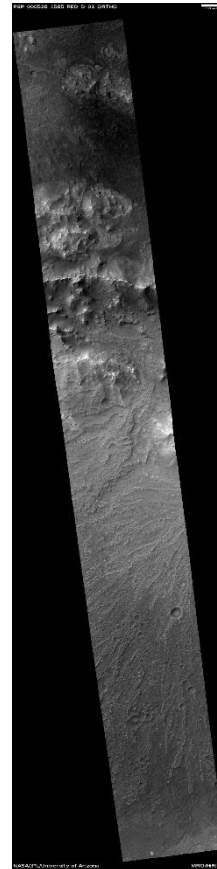
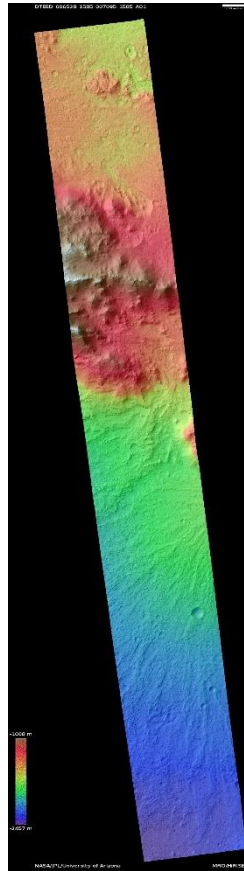
35.0°N 163.9°E
DTM Producer: UA | Riley McClurkin
Stereo Pair:
ESP_059507_2155
ESP_058795_2155

For more details about this DTM, visit:
https://www.uahirise.org/dtm/dtm.php?ID=ESP_059507_2155



Alluvial Fans in Unnamed Crater

DTEED_006528_1585_007095_1585_A01



21.4°S 67.2°E
DTM Producer: UA | Riley McClurkin
Stereo Pair:
PSP_006528_1585
PSP_007095_1585

For more details about this DTM, visit:
https://www.uahirise.org/dtm/dtm.php?ID=PSP_006528_1585

