



## HIGH RESOLUTION IMAGING SCIENCE EXPERIMENT



COLLEGE OF SCIENCE  
**LUNAR & PLANETARY  
LABORATORY**

# DTM PDS RELEASES

*June 2024*

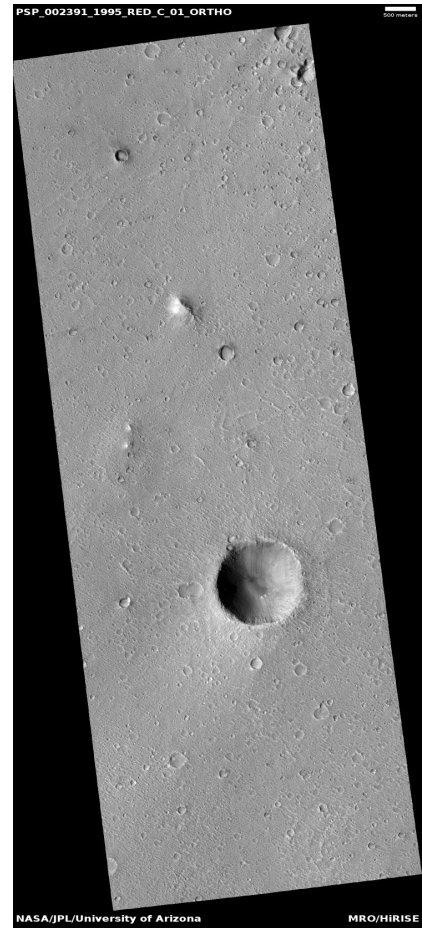
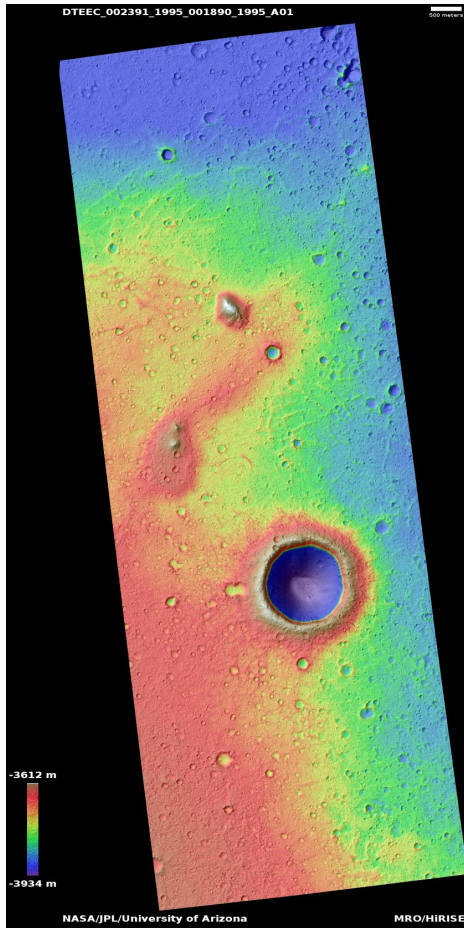
Edited by Kris Akers | UA

### DTMs Included this Month

Possible Mars Pathfinder landing site	1
Cratered cones in Isidis region	2
Small cone in Hydraotes Chaos	3
Partial icy fill of impact crater onto graben	4
Southern continuous ejecta boundary of Zunil Crater	5
Possible phyllosilicates in Her Desher Vallis	6

# Possible Mars Pathfinder landing site

DTEEC\_002391\_1995\_001890\_1995\_A01



**Latitude:** 19.1    **Longitude:** 326.7

**DTM Producer:** UA | BRANDEN M GOSSE

**Stereo Pair:**

PSP\_001890\_1995  
PSP\_002391\_1995

**For more details about this DTM, visit:**

[https://www.uahirise.org/dtm/PSP\\_002391\\_1995](https://www.uahirise.org/dtm/PSP_002391_1995)

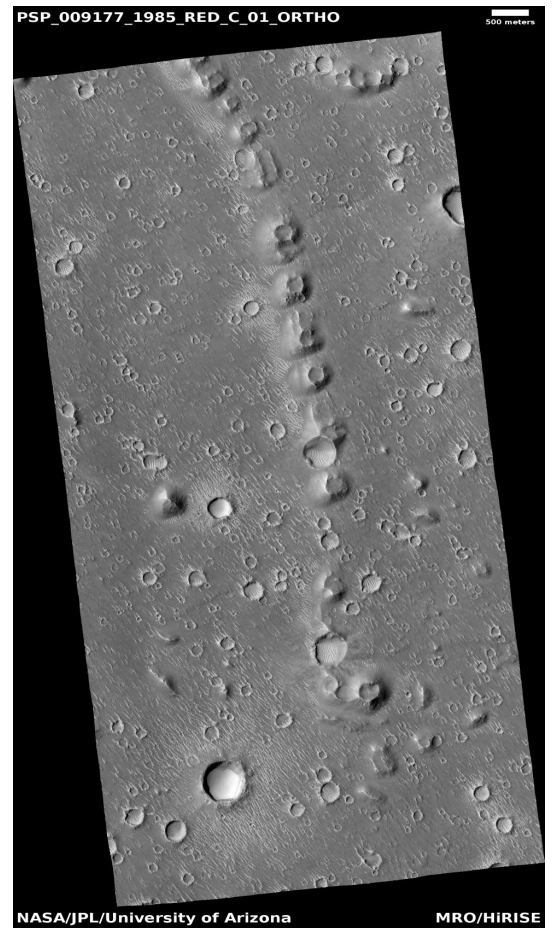
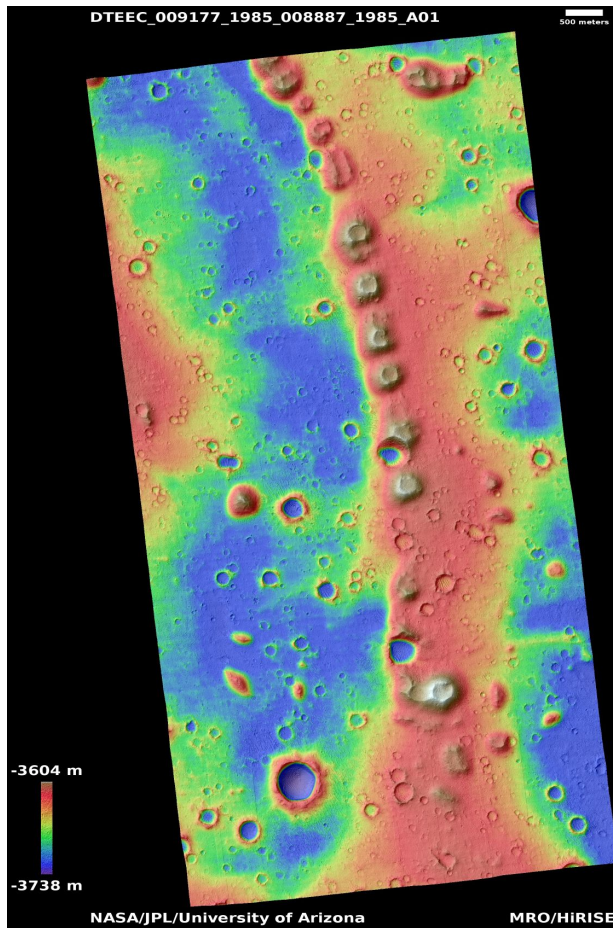
**Additional Orthos:**

ESP\_022038\_1995



# Cratered cones in Isidis region

DTEEC\_009177\_1985\_008887\_1985\_A01



**Latitude:** 18.1    **Longitude:** 88.2

**DTM Producer:** UA | KRIS AMANDA AKERS

**Stereo Pair:**

PSP\_008887\_1985

PSP\_009177\_1985

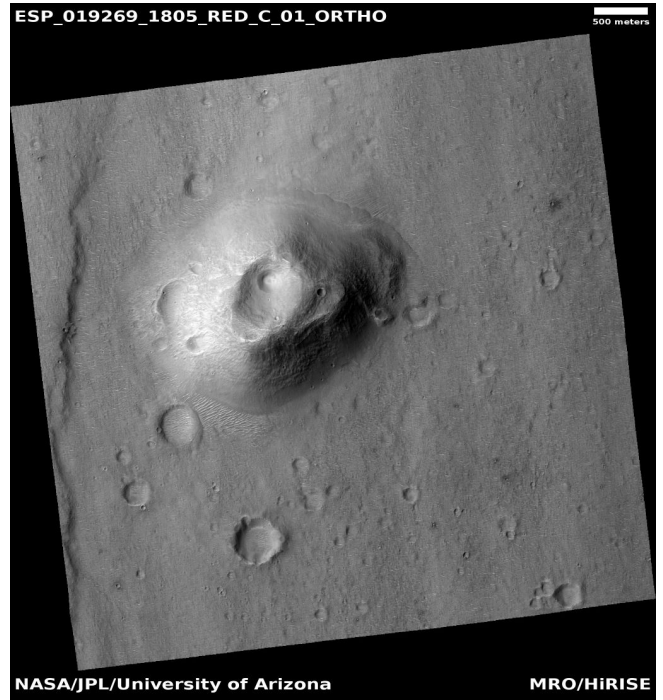
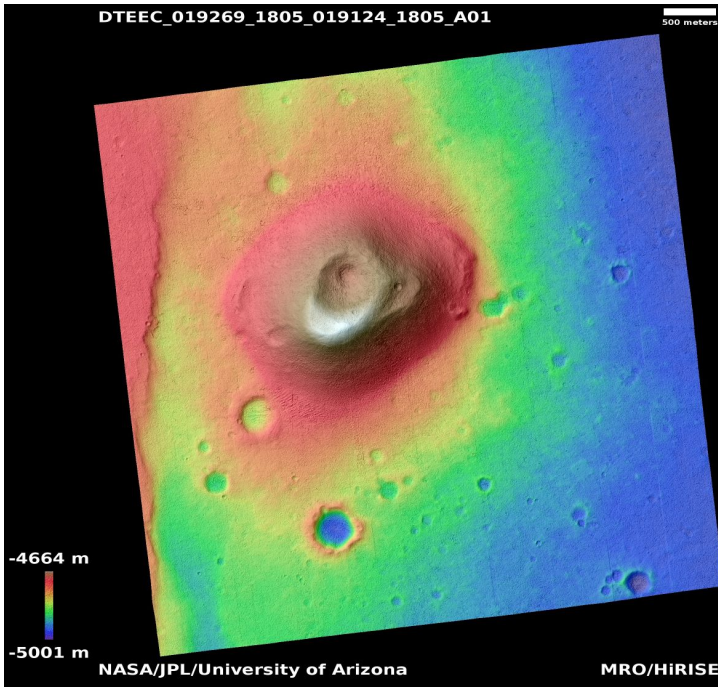
**For more details about this DTM, visit:**

[https://www.uahirise.org/dtm/PSP\\_009177\\_1985](https://www.uahirise.org/dtm/PSP_009177_1985)



# Small cone in Hydraotes Chaos

DTEEC\_019269\_1805\_019124\_1805\_A01



**Latitude:** 0.2      **Longitude:** 326.1

**DTM Producer:** UA | KRIS AMANDA AKERS

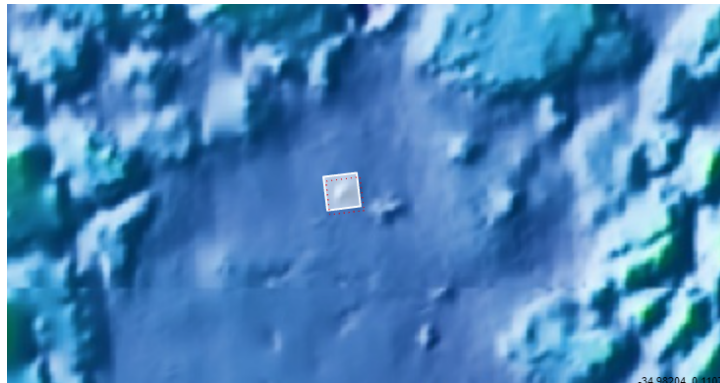
**Stereo Pair:**

ESP\_019269\_1805

ESP\_019124\_1805

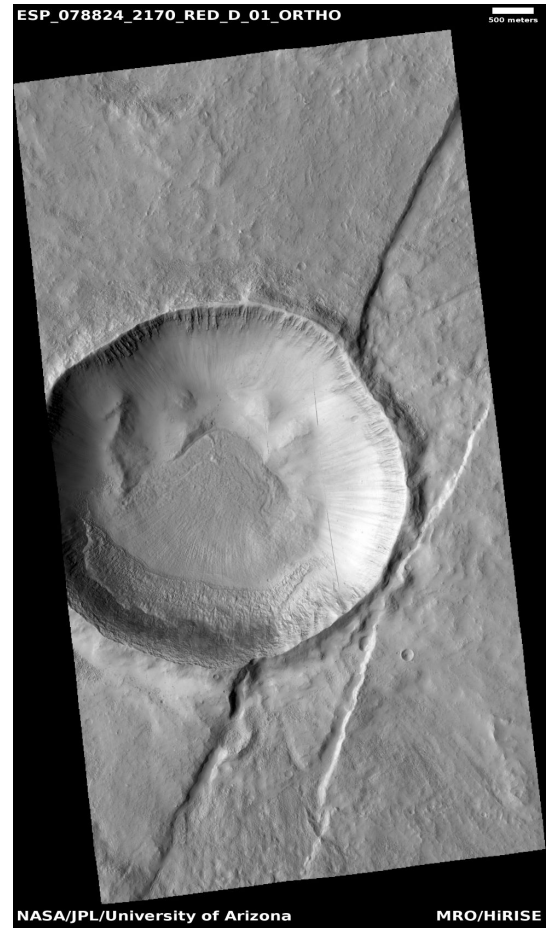
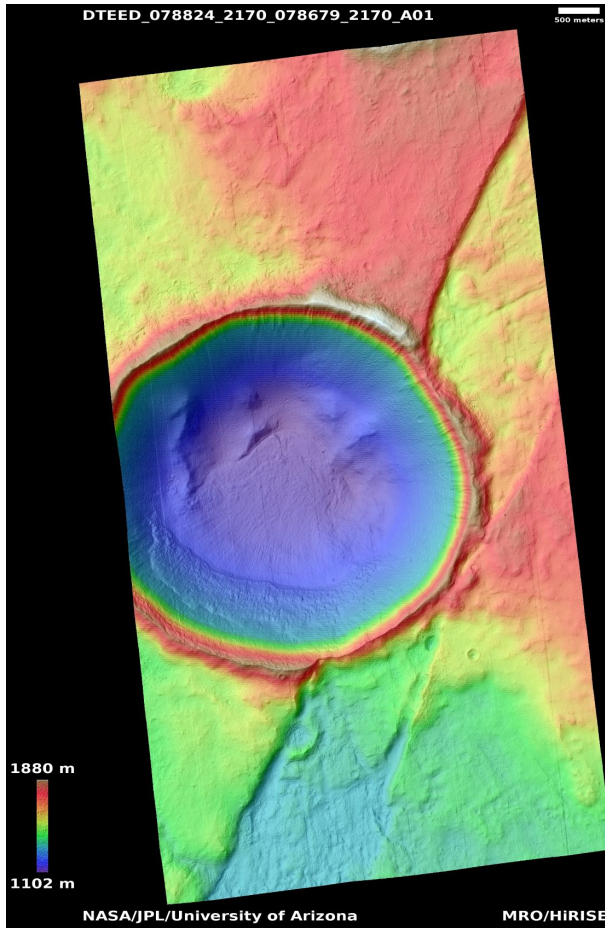
**For more details about this DTM, visit:**

[https://www.uahirise.org/dtm/ESP\\_019269\\_1805](https://www.uahirise.org/dtm/ESP_019269_1805)



# Partial icy fill of impact crater onto graben

DTEED\_078824\_2170\_078679\_2170\_A01



**Latitude:** 36.5    **Longitude:** 258.7

**DTM Producer:** UA | KRIS AMANDA AKERS

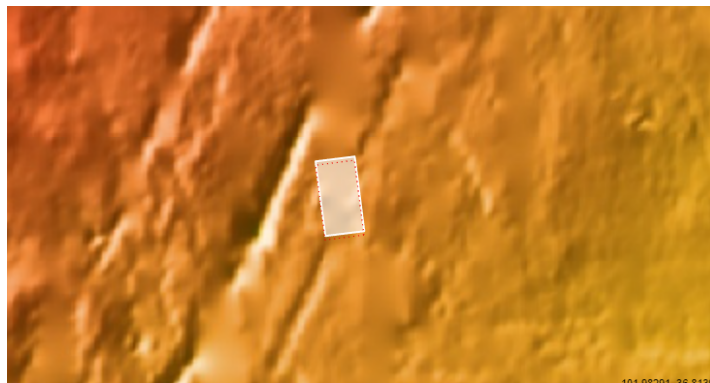
**Stereo Pair:**

ESP\_078824\_2170

ESP\_078679\_2170

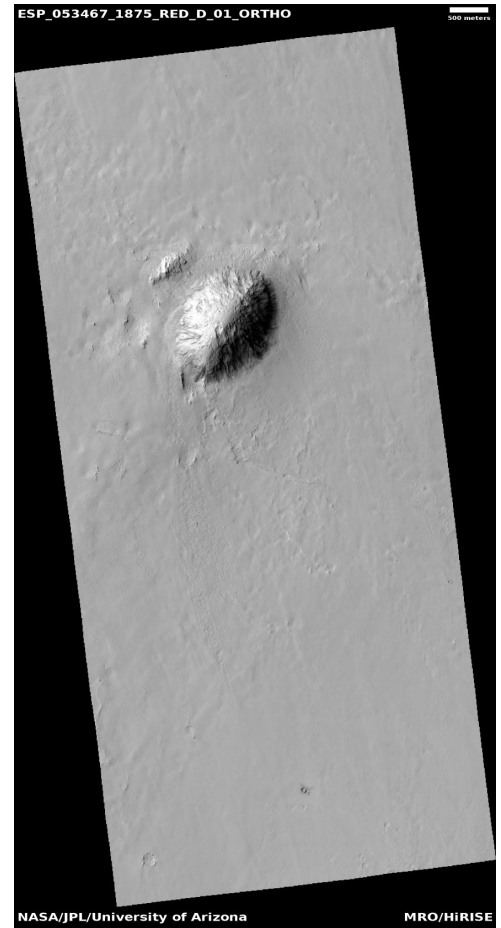
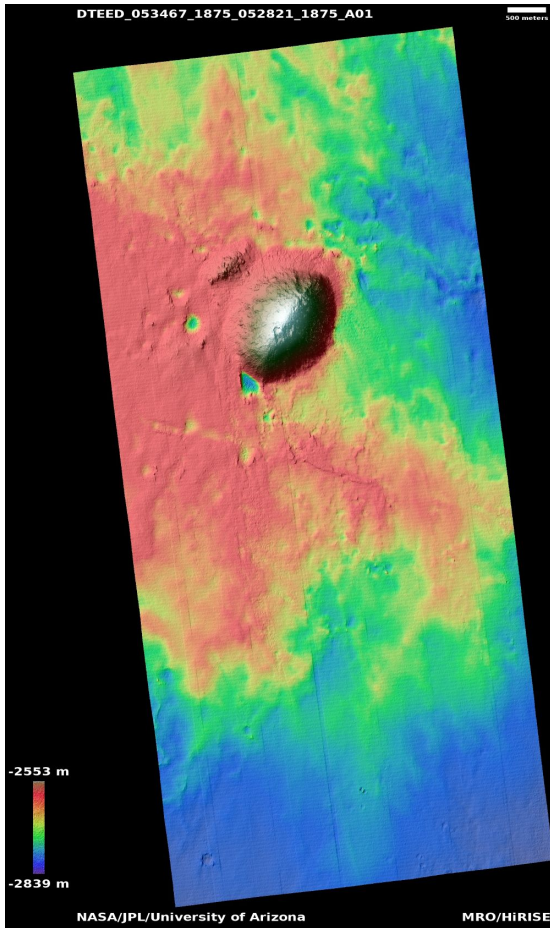
**For more details about this DTM, visit:**

[https://www.uahirise.org/dtm/ESP\\_078824\\_2170](https://www.uahirise.org/dtm/ESP_078824_2170)



# Southern continuous ejecta boundary of Zunil Crater

DTEED\_053467\_1875\_052821\_1875\_A01



**Latitude:** 7.3      **Longitude:** 166.3

**DTM Producer:** UA | KRIS AMANDA AKERS

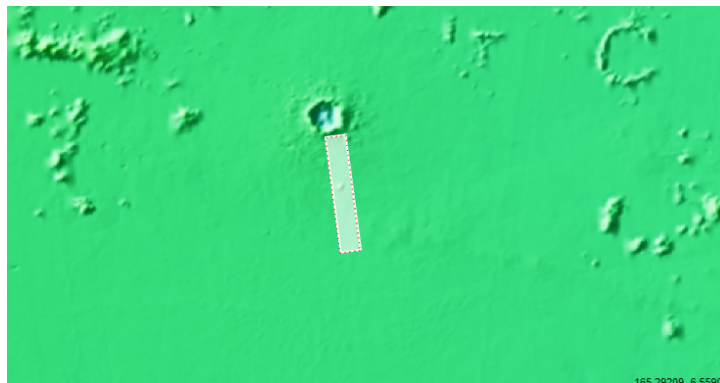
**Stereo Pair:**

ESP\_052821\_1875

ESP\_053467\_1875

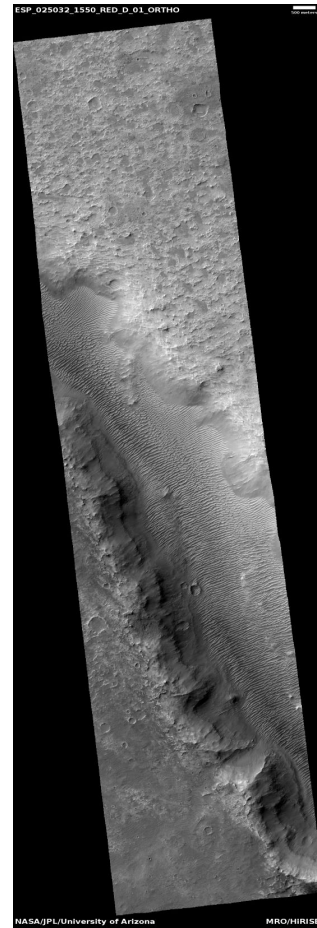
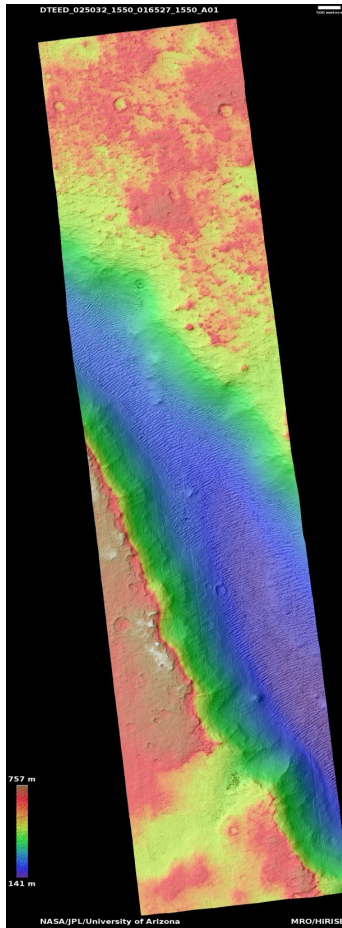
**For more details about this DTM, visit:**

[https://www.uahirise.org/dtm/ESP\\_053467\\_1875](https://www.uahirise.org/dtm/ESP_053467_1875)



# Possible phyllosilicates in Her Desher Vallis

DTEED\_025032\_1550\_016527\_1550\_A01



**Latitude:** -24.9    **Longitude:** 311.9

**DTM Producer:** UA | KRIS AMANDA AKERS

**Stereo Pair:**

ESP\_016527\_1550

ESP\_025032\_1550

**For more details about this DTM, visit:**

[https://www.uahirise.org/dtm/ESP\\_025032\\_1550](https://www.uahirise.org/dtm/ESP_025032_1550)

