



**HIGH RESOLUTION IMAGING
SCIENCE EXPERIMENT**



DTM PDS RELEASES

June 2019

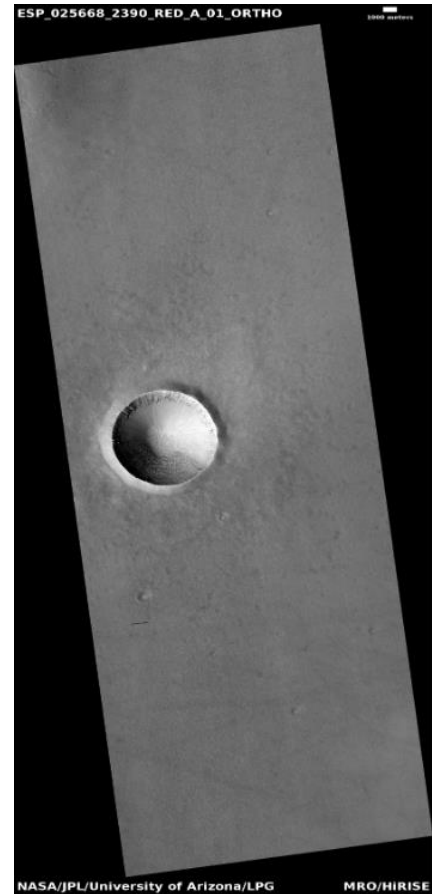
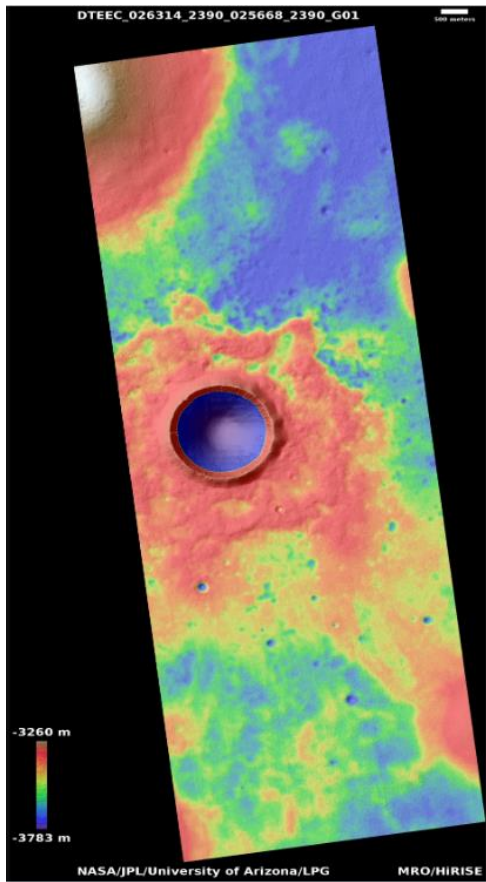
Edited by Daniel Robinson | UA

DTMs Included this Month

Fresh Crater.....	1
Well-Preserved 4-Kilometer Impact Crater.....	2
Layered Bedrock in Northeast Hellas Planitia.....	3
Possible Future Mars Landing Site for Joint Rover.....	4
Ridges in Diacria Region.....	5
Northern Plain Features.....	6

Fresh Crater

DTEEC_026314_2390_025668_2390_G01



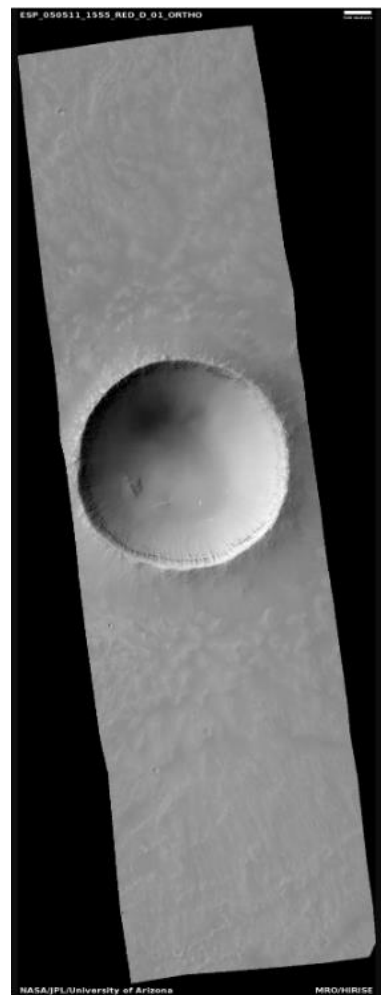
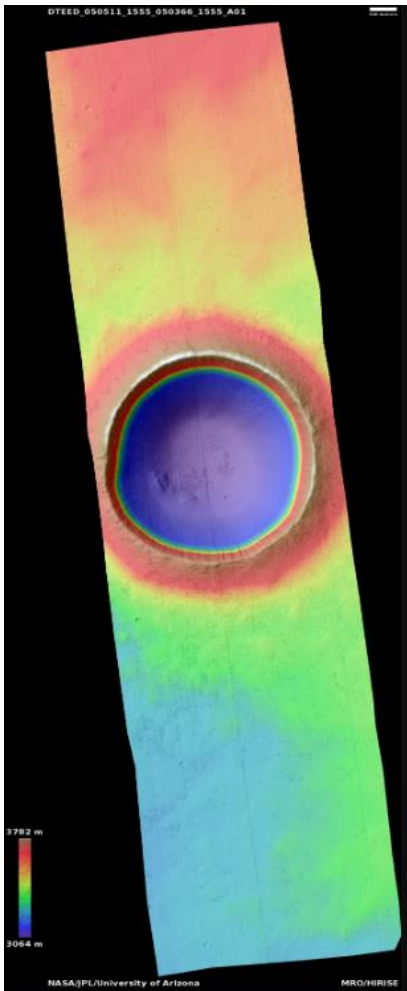
57.7°N 217.2°E
DTM Producer: LPG | Susan Conway
Stereo Pair:
ESP_026314_2390
ESP_025668_2390

For more details about this DTM, visit:
https://www.uahirise.org/dtm/dtm.php?ID=ESP_026314_2390



Well-Preserved 4-Kilometer Impact Crater

DTEED_050511_1555_050366_1555_A01



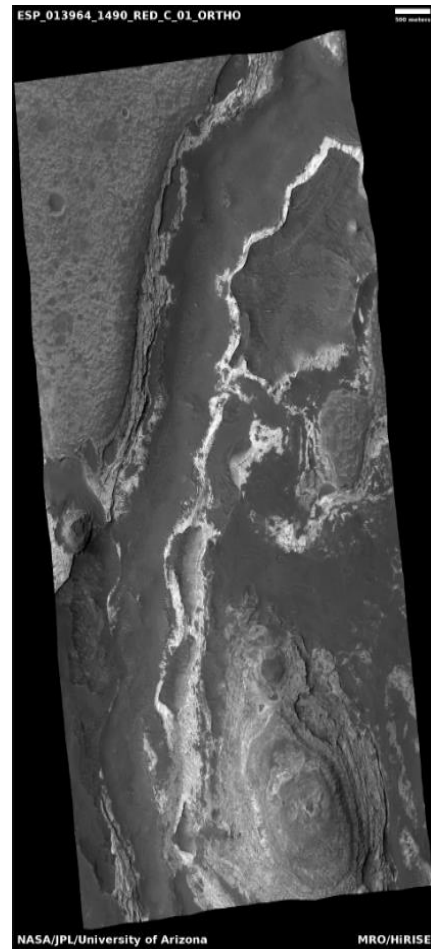
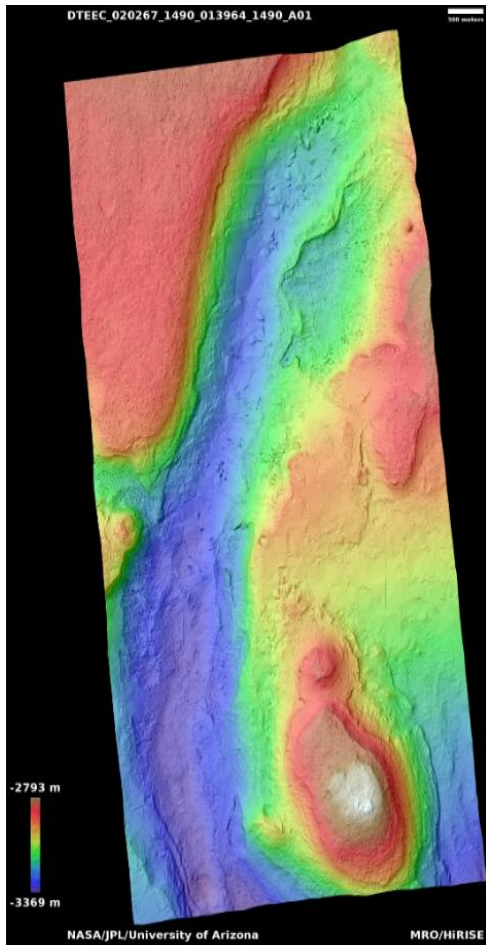
24.2°S 237.4°E
DTM Producer: UA | Shavonne Morin
Stereo Pair:
ESP_050511_1555
ESP_050366_1555

For more details about this DTM, visit:
https://www.uahirise.org/dtm/dtm.php?ID=ESP_050511_1555



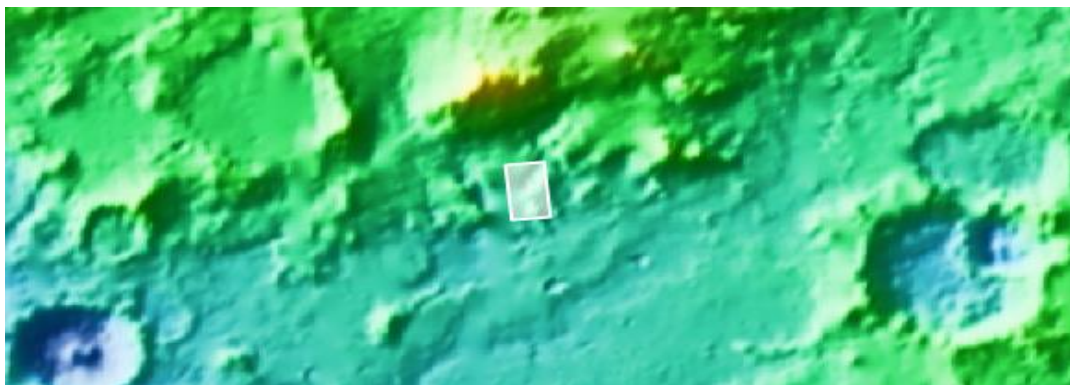
Layered Bedrock in Northeast Hellas Planitia

DTEEC_020267_1490_013964_1490_A01



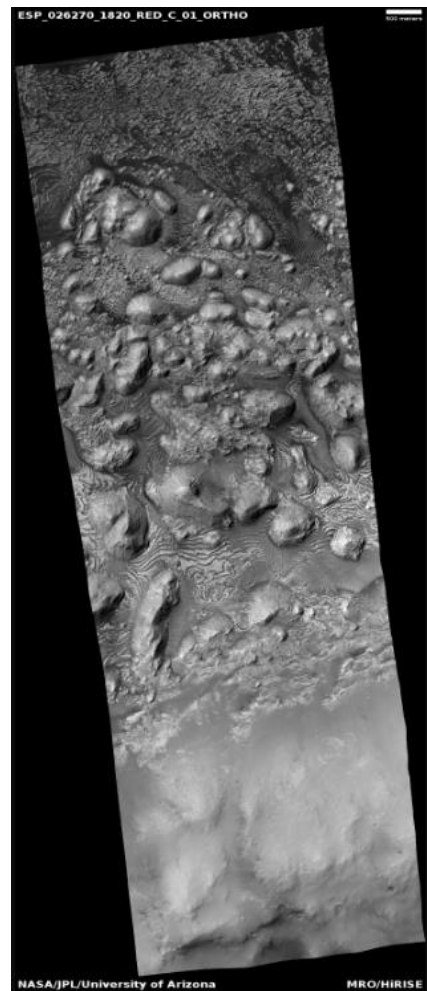
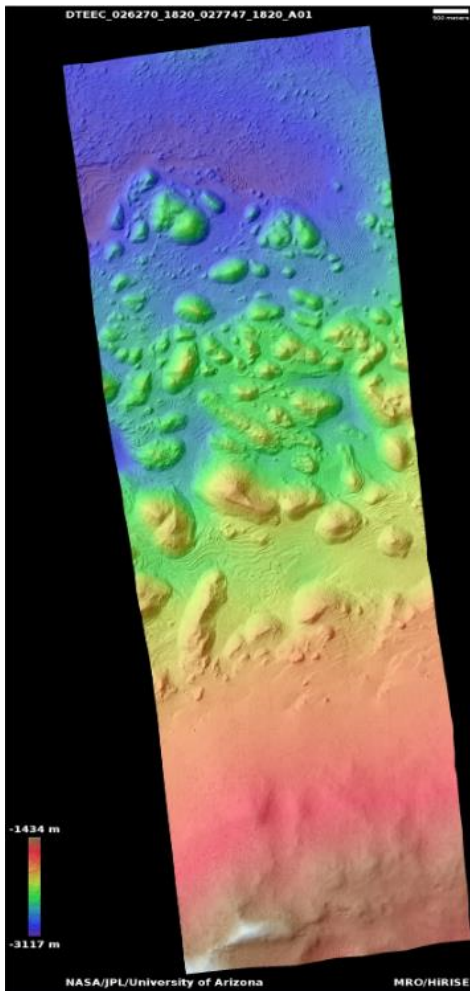
30.7°S 82.95°E
DTM Producer: UA | Daniel Robinson
Stereo Pair:
ESP_013964_1490
ESP_020267_1490

For more details about this DTM, visit:
https://www.uahirise.org/dtm/dtm.php?ID=ESP_020267_1490



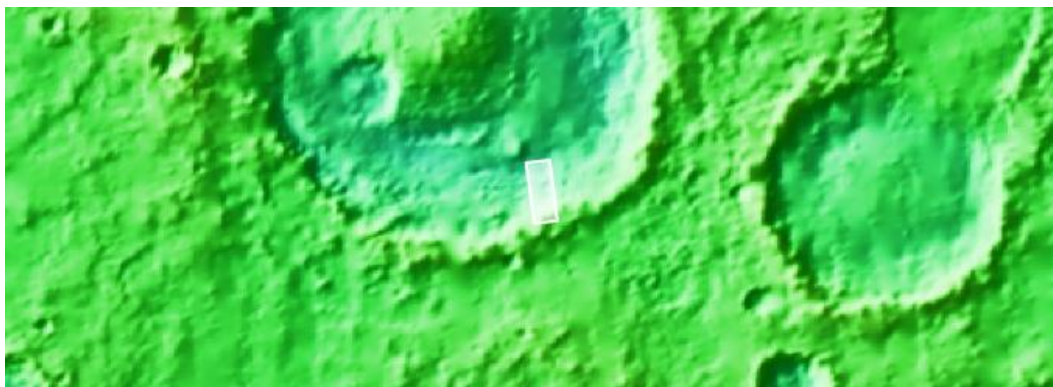
Possible Future Mars Landing Site of Joint Rover

DTEEC_026270_1820_027747_1820_A01



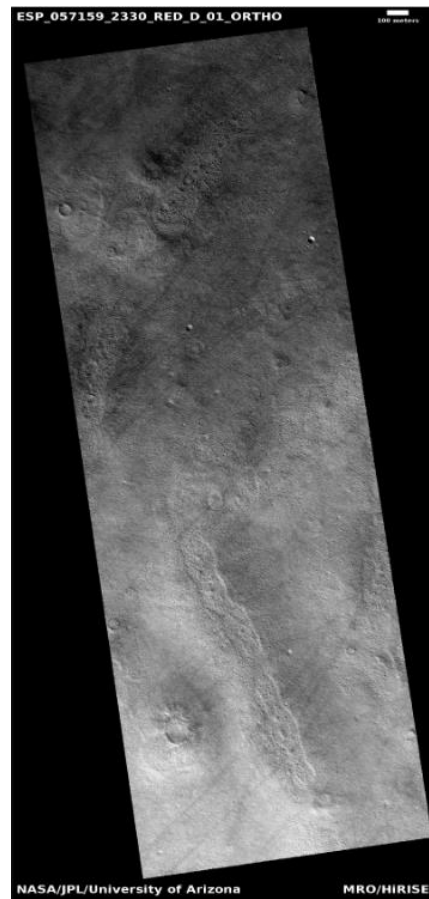
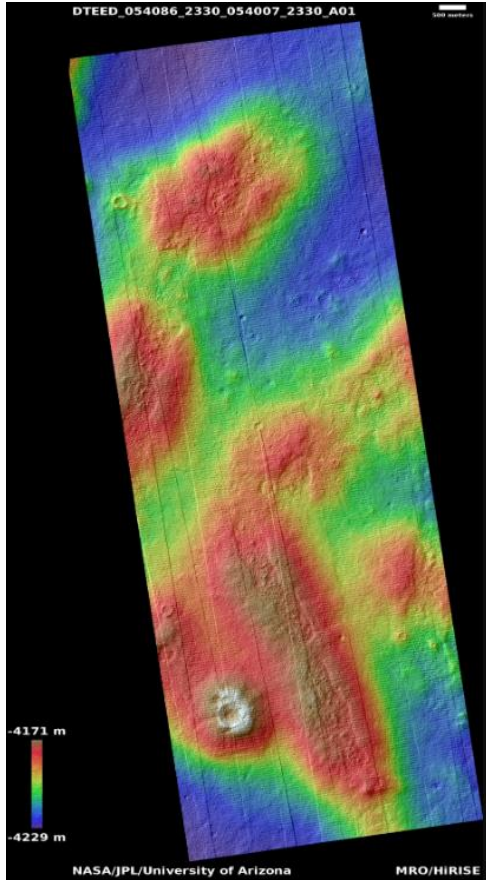
2.17°N 350.9°E
DTM Producer: UA | Daniel Robinson
Stereo Pair:
ESP_026270_1820
ESP_027747_1820

For more details about this DTM, visit:
https://www.uahirise.org/dtm/dtm.php?ID=ESP_026270_1820



Ridges in Diacria Region

DTEED_054086_2330_054007_2330_A01

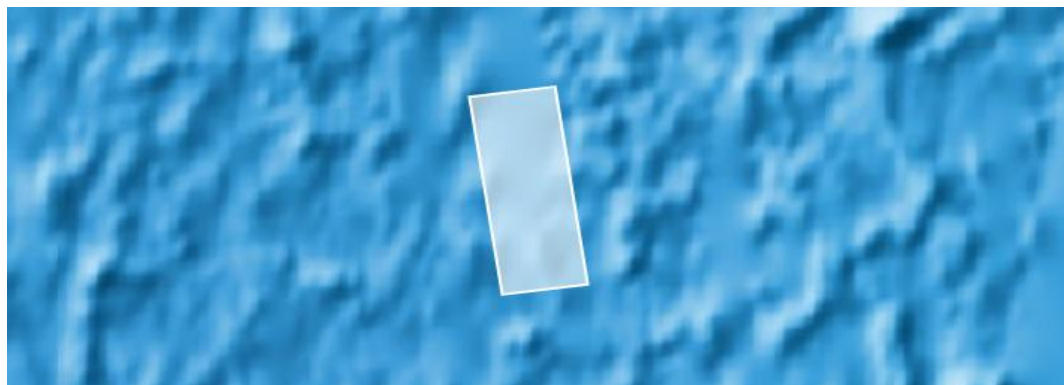


52.5°N 178°E
DTM Producer: UA | Riley McClurkin
Stereo Pair:
ESP_054086_2330
ESP_054007_2330

Additional Orthos:

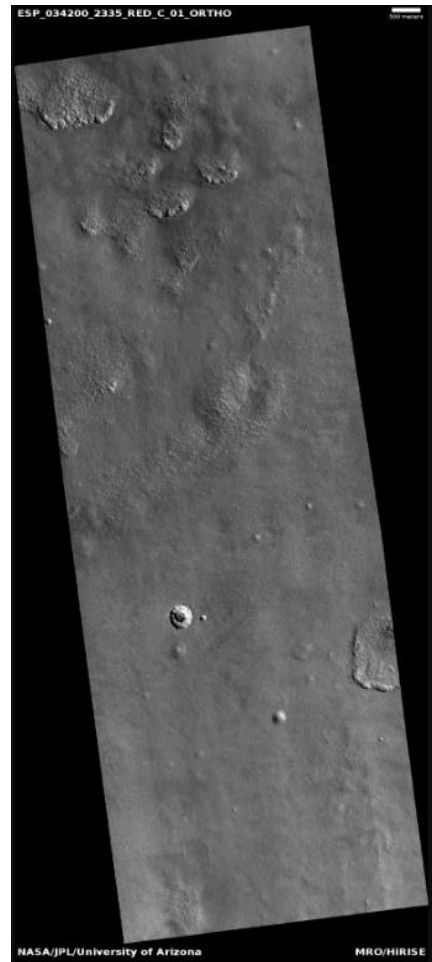
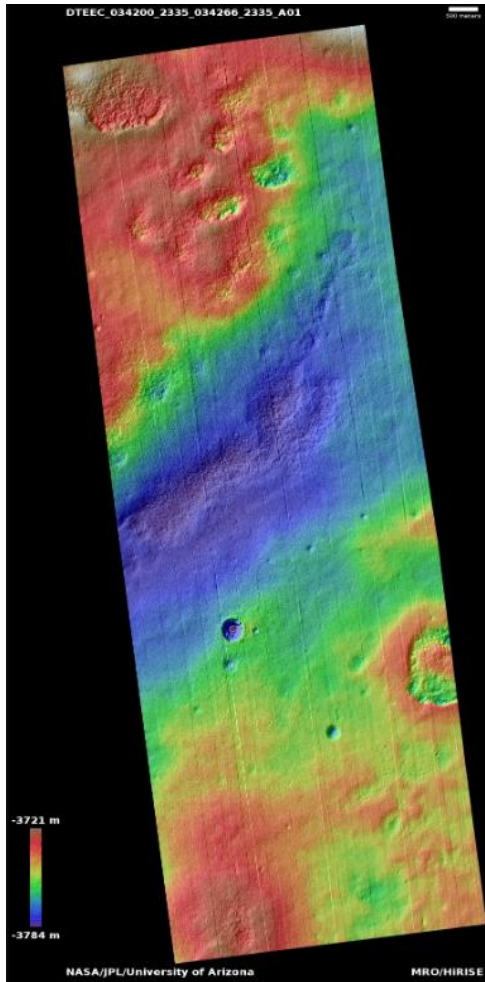
ESP_055207_2330
ESP_055352_2330
ESP_055906_2330
ESP_056671_2330
ESP_057159_2330

For more details about this DTM, visit:
https://www.uahirise.org/dtm/dtm.php?ID=ESP_054086_2330



Northern Plains Features

DTEEC_034200_2335_034266_2335_A01



53°N 305.8°E
DTM Producer: UA | Daniel Robinson
Stereo Pair:
ESP_034200_2335
ESP_034266_2335

For more details about this DTM, visit:
https://www.uahirise.org/dtm/dtm.php?ID=ESP_034200_2335

