



HIGH RESOLUTION IMAGING SCIENCE EXPERIMENT



COLLEGE OF SCIENCE
**LUNAR & PLANETARY
LABORATORY**

DTM PDS RELEASES

July 2024

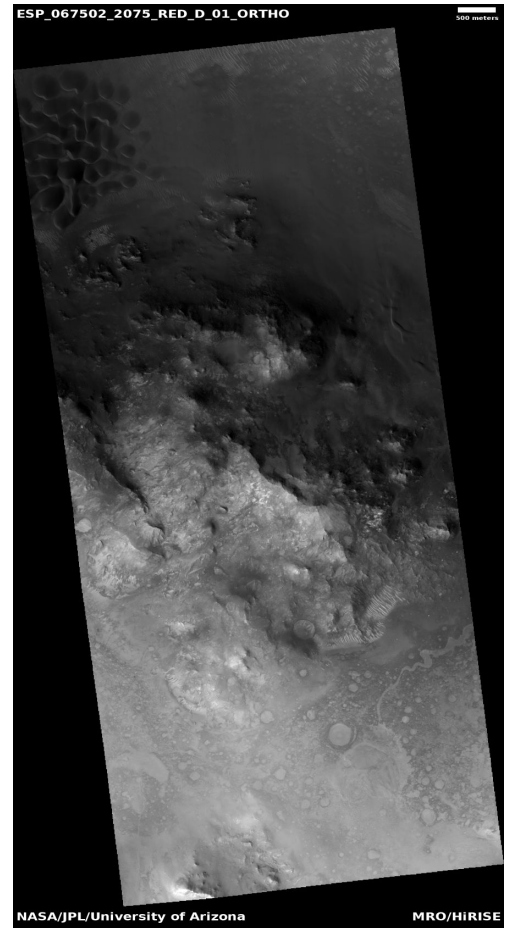
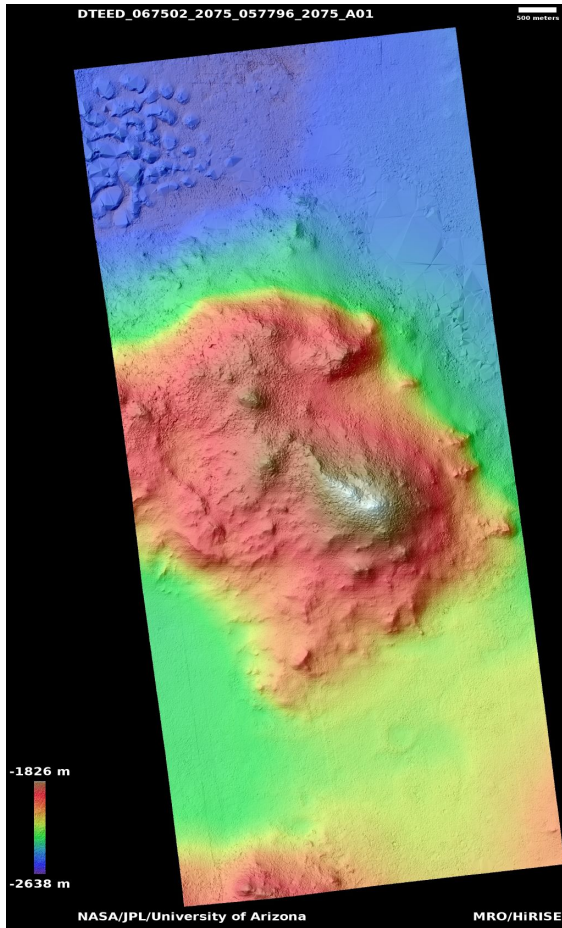
Edited by Kris Akers | UA

DTMs Included this Month

Central structure of impact crater	1
Chains of mounds in Utopia Planitia	2
Chains of mounds in Utopia Planitia	3
Topography and geomorphology of surface and contacts in Astapus Colles	4
Sinuuous ridge at contact between lineated valley fill and plains material	5
Ridged flow-like features in Deuteronilus Mensae	6
Exposed strata in crater near planned ExoMars landing site in Oxia Planum	7
Cerberus Fossae near head of Athabasca Valles	8
Kasei Valles	9
Scarp monitoring	10
Lava flow and channels near Olympica Fossae	11

Central structure of impact crater

DTEED_067502_2075_057796_2075_A01



Latitude: 27.4 **Longitude:** 76.9

DTM Producer: UA | BRANDEN M GOSSE

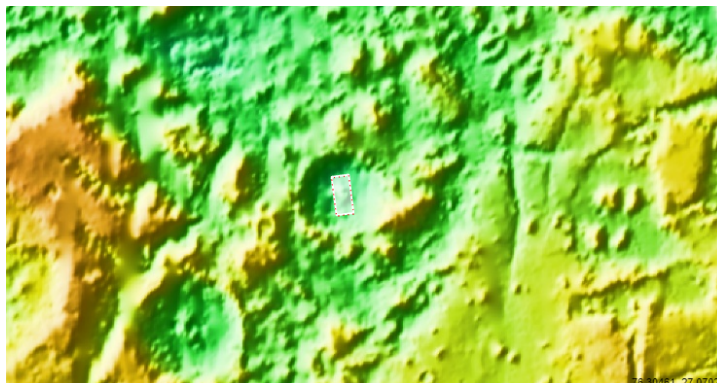
Stereo Pair:

ESP_057796_2075

ESP_067502_2075

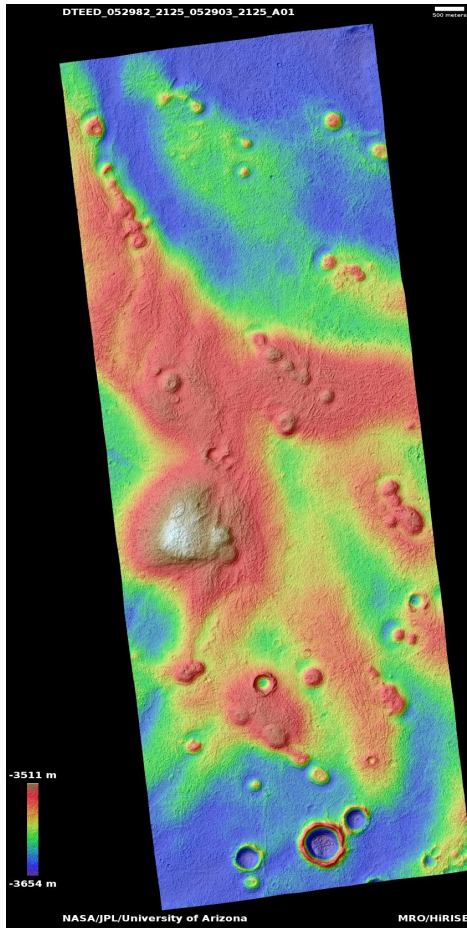
For more details about this DTM, visit:

https://www.uahirise.org/dtm/ESP_067502_2075



Chains of mounds in Utopia Planitia

DTEED_052982_2125_052903_2125_A01



Latitude: 32.4 **Longitude:** 87.7

DTM Producer: UA | KRIS AMANDA AKERS

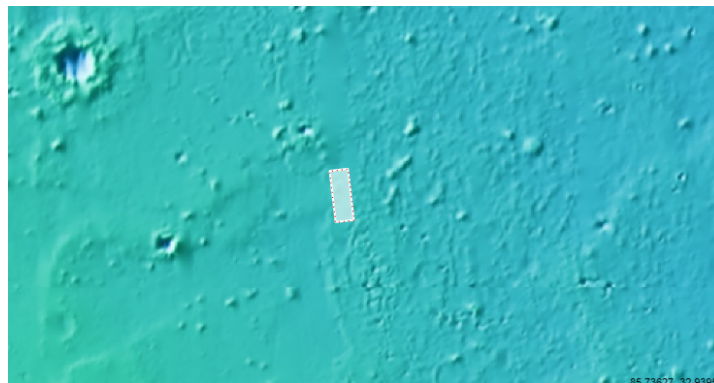
Stereo Pair:

ESP_052903_2125

ESP_052982_2125

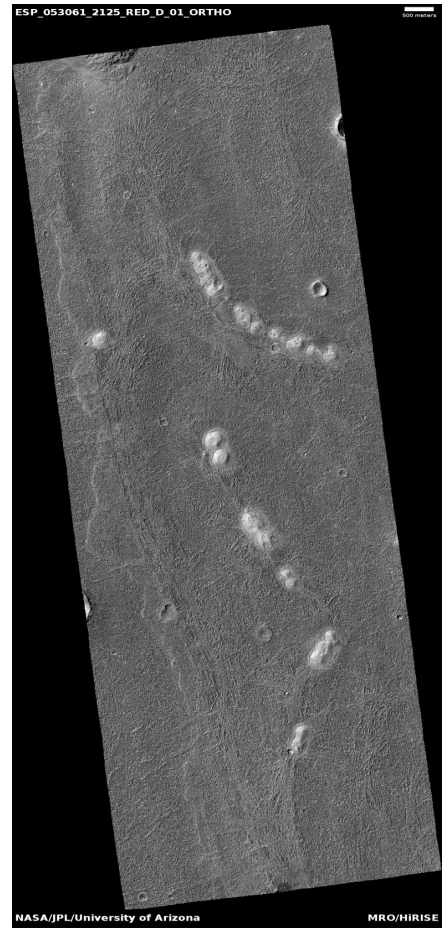
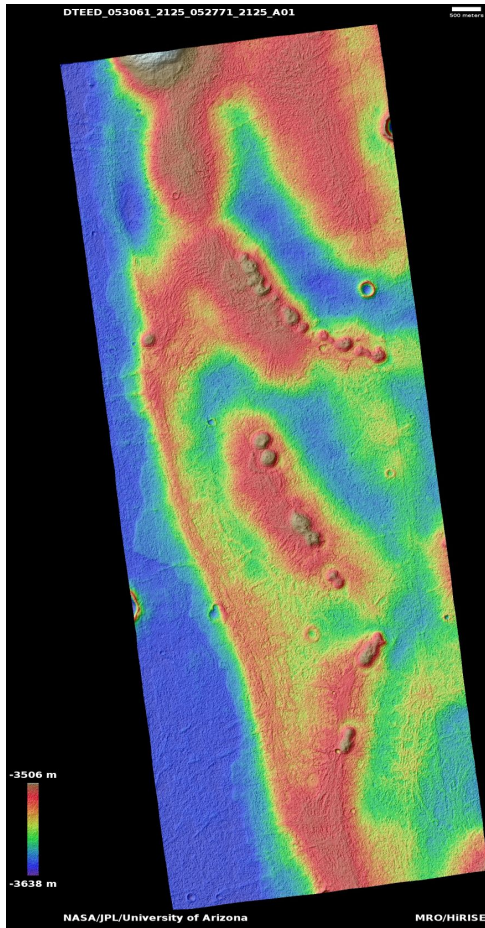
For more details about this DTM, visit:

https://www.uahirise.org/dtm/ESP_052982_2125



Chains of mounds in Utopia Planitia

DTEED_053061_2125_052771_2125_A01



Latitude: 32.1 **Longitude:** 87.6

DTM Producer: UA | KRIS AMANDA AKERS

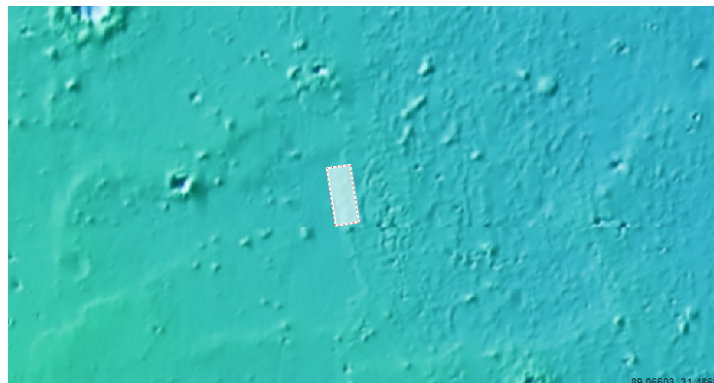
Stereo Pair:

ESP_053061_2125

ESP_052771_2125

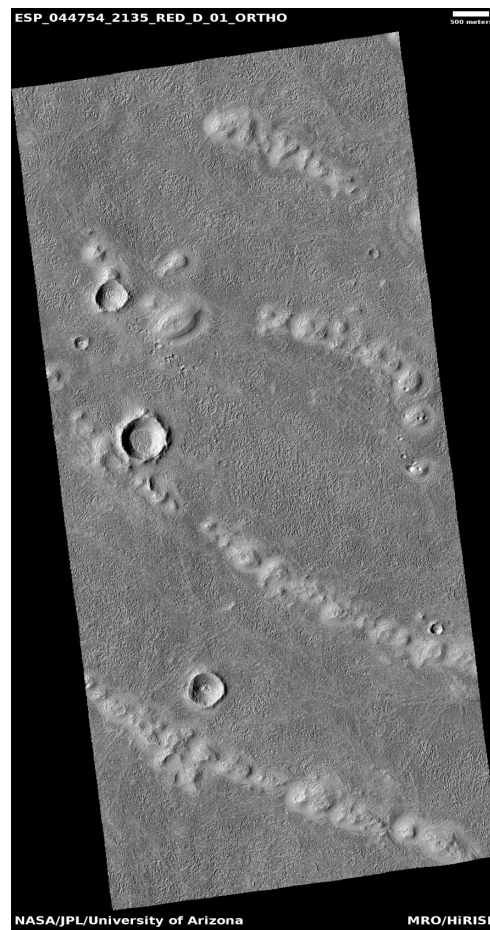
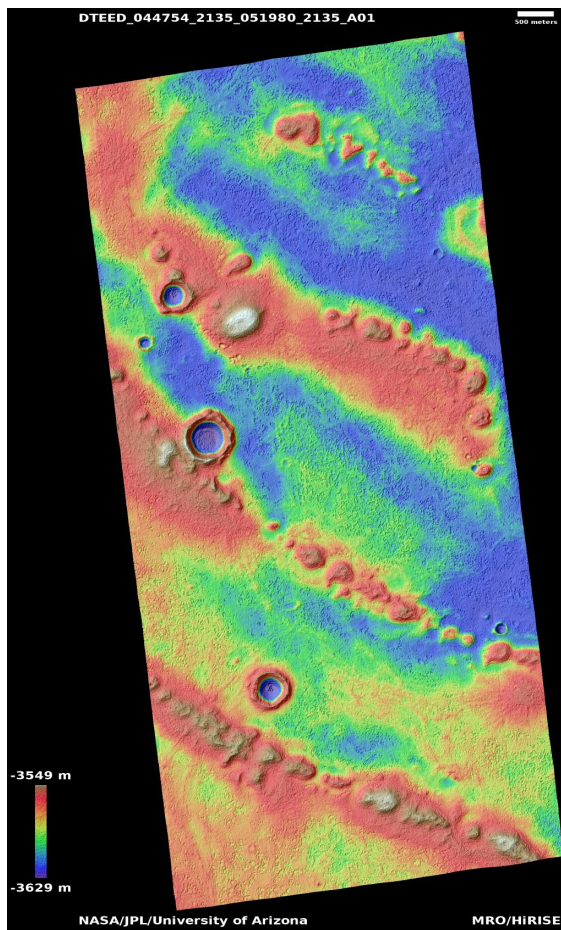
For more details about this DTM, visit:

https://www.uahirise.org/dtm/ESP_053061_2125



Topography and geomorphology of surface and contacts in Astapus Colles

DTEED_044754_2135_051980_2135_A01



Latitude: 33.2 **Longitude:** 86.9

DTM Producer: UA | KRIS AMANDA AKERS

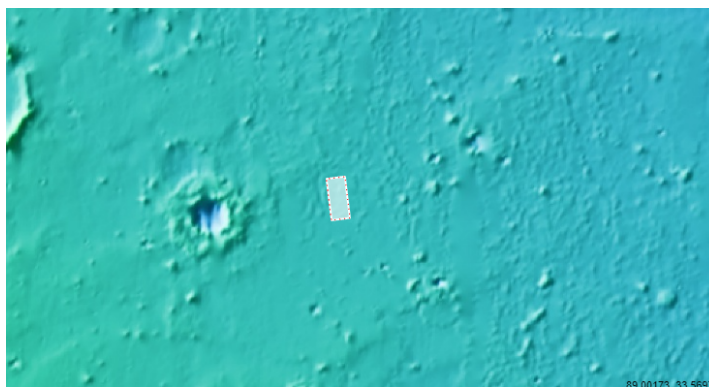
Stereo Pair:

ESP_044754_2135

ESP_051980_2135

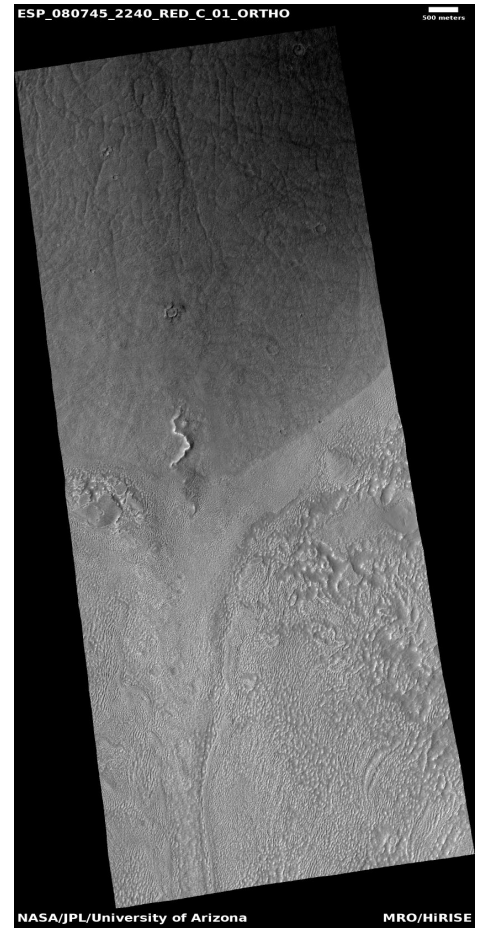
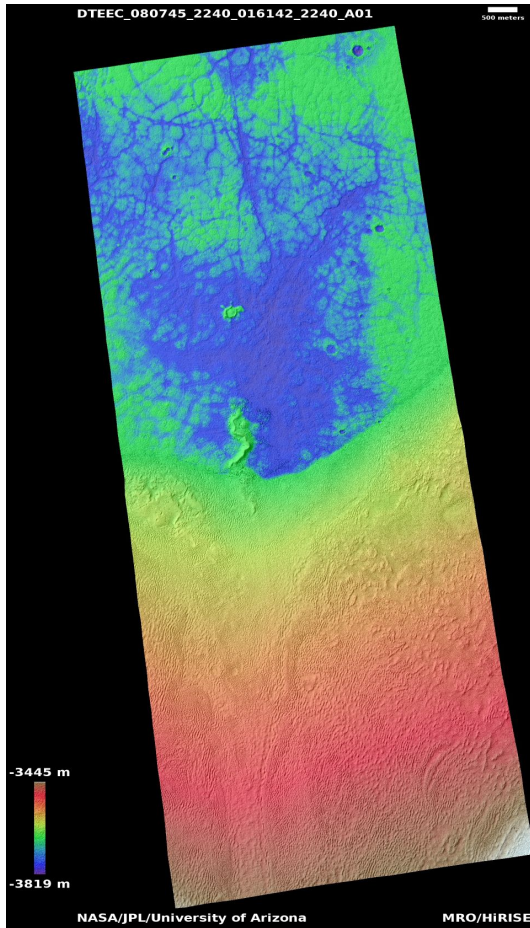
For more details about this DTM, visit:

https://www.uahirise.org/dtm/ESP_044754_2135



Sinuuous ridge at contact between lineated valley fill and plains material

DTEEC_080745_2240_016142_2240_A01



Latitude: 43.7 **Longitude:** 13.7

DTM Producer: UA | KRIS AMANDA AKERS

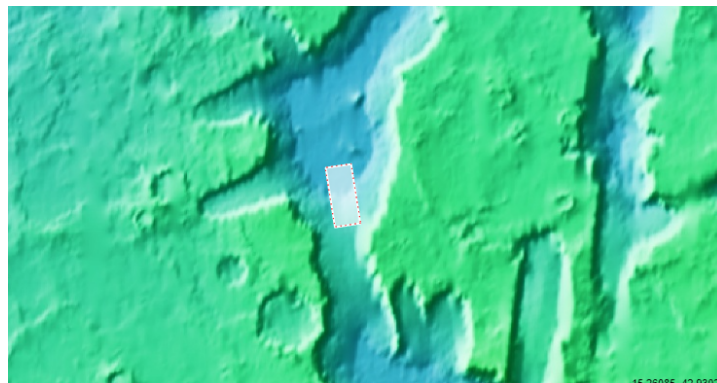
Stereo Pair:

ESP_016142_2240

ESP_080745_2240

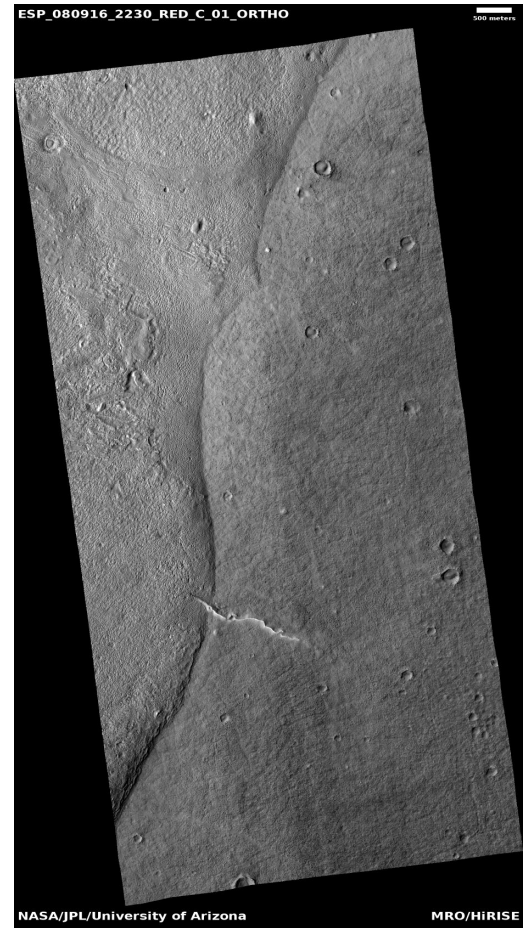
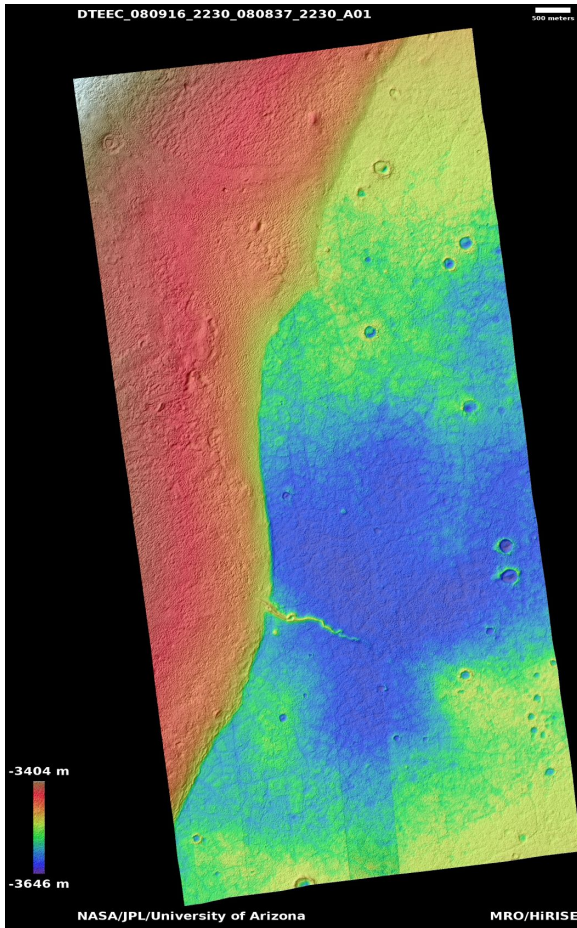
For more details about this DTM, visit:

https://www.uahirise.org/dtm/ESP_080745_2240



Ridged flow-like features in Deuteronilus Mensae

DTEEC_080916_2230_080837_2230_A01



Latitude: 42.5 **Longitude:** 26.9

DTM Producer: UA | KRIS AMANDA AKERS

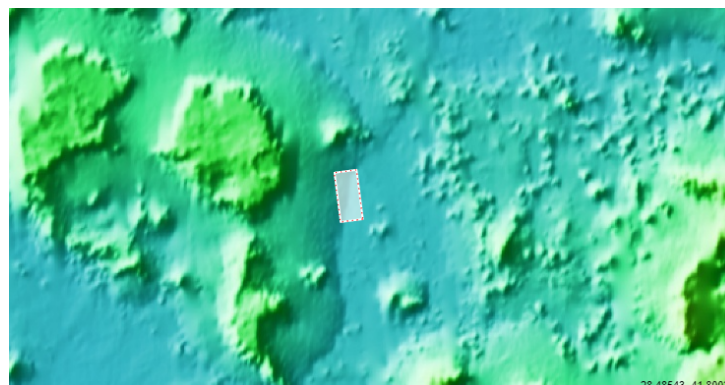
Stereo Pair:

ESP_080837_2230

ESP_080916_2230

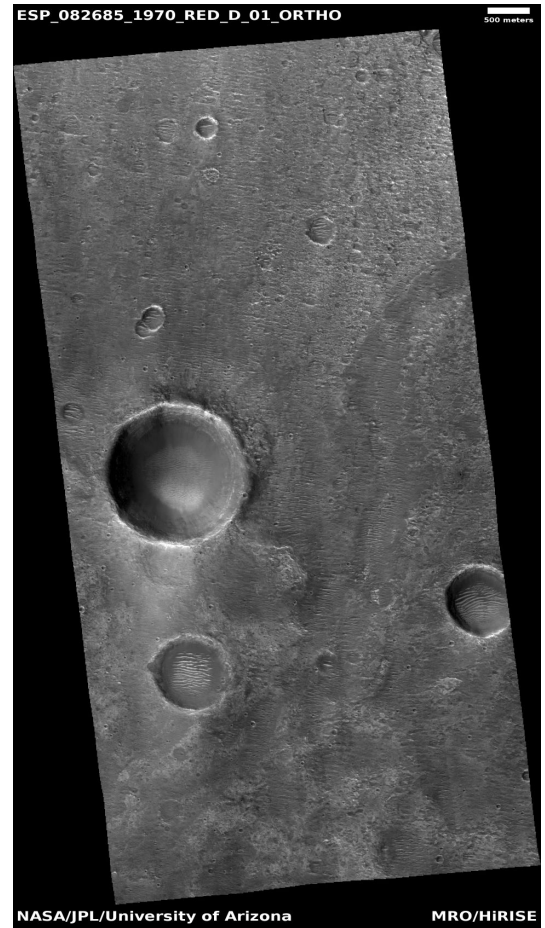
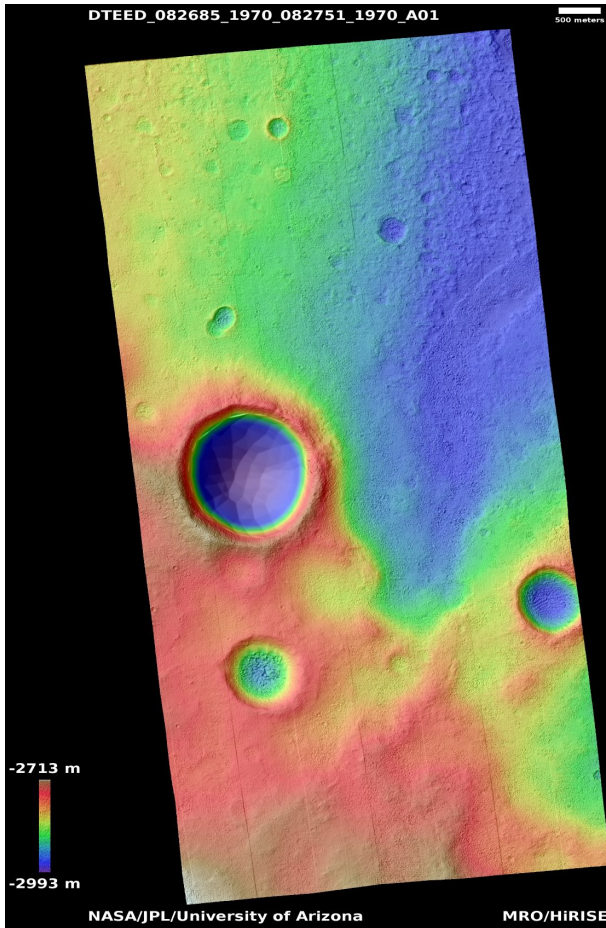
For more details about this DTM, visit:

https://www.uahirise.org/dtm/ESP_080916_2230



Exposed strata in crater near planned ExoMars landing site in Oxia Planum

DTEED_082685_1970_082751_1970_A01



Latitude: 16.7 **Longitude:** 334.5

DTM Producer: UA | KRIS AMANDA AKERS

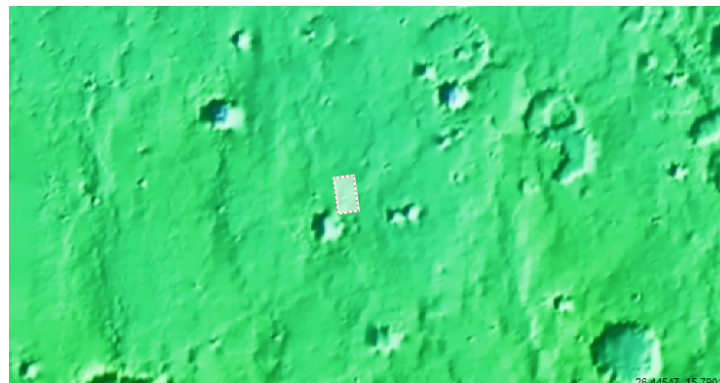
Stereo Pair:

ESP_082751_1970

ESP_082685_1970

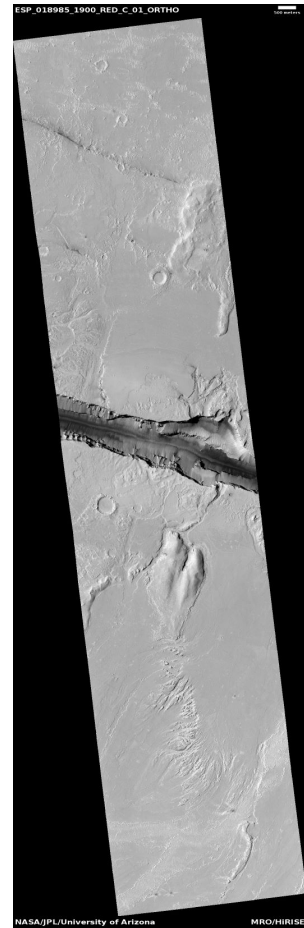
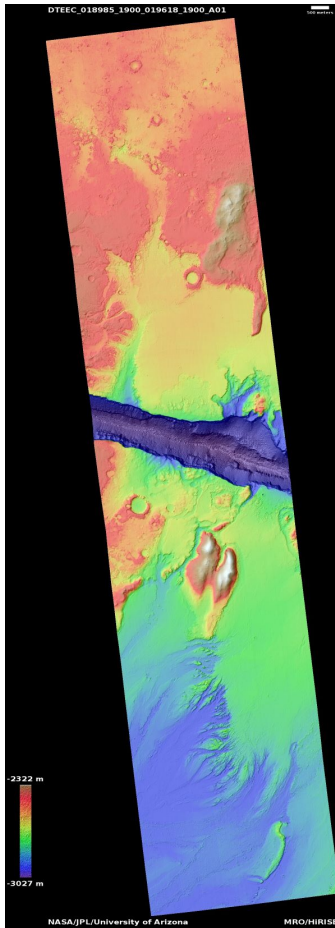
For more details about this DTM, visit:

https://www.uahirise.org/dtm/ESP_082685_1970



Cerberus Fossae near head of Athabasca Valles

DTEEC_018985_1900_019618_1900_A01



Latitude: 10.0 **Longitude:** 157.9

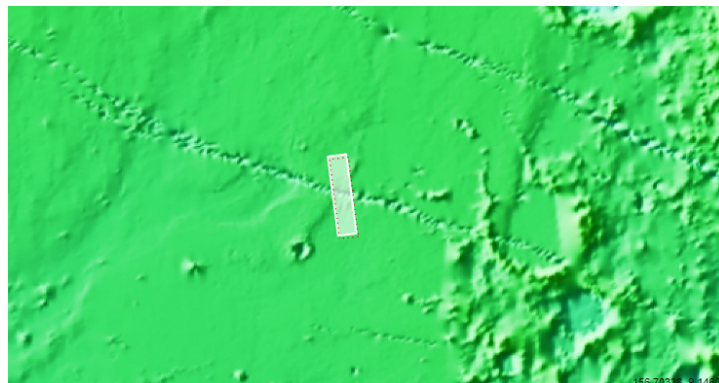
DTM Producer: UA | BRANDEN M GOSSE

Stereo Pair:

ESP_019618_1900
ESP_018985_1900

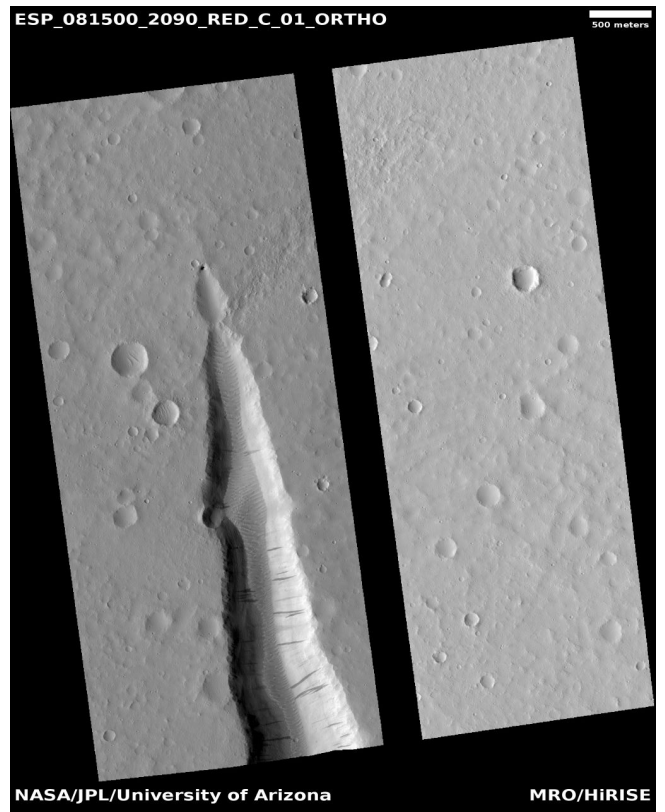
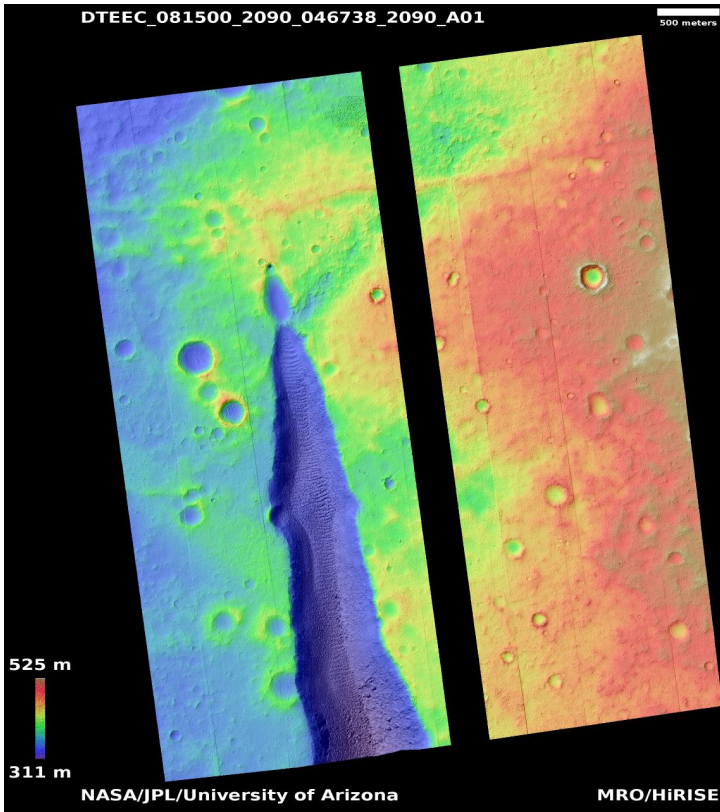
For more details about this DTM, visit:

https://www.uahirise.org/dtm/ESP_018985_1900



Kasei Valles

DTEEC_081500_2090_046738_2090_A01



Latitude: 284.6 **Longitude:** 28.8

DTM Producer: UA | BRANDEN M GOSSE

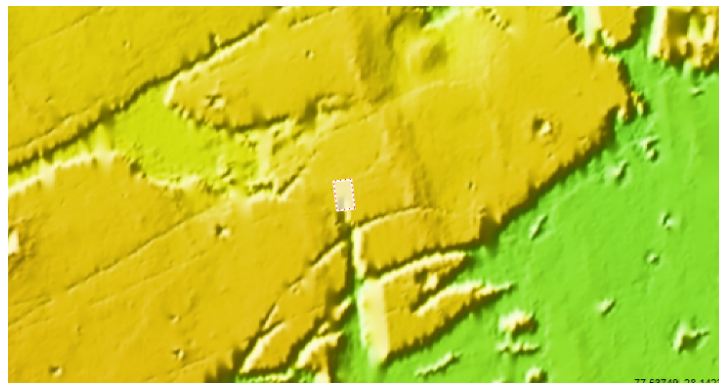
Stereo Pair:

ESP_046738_2090

ESP_081500_2090

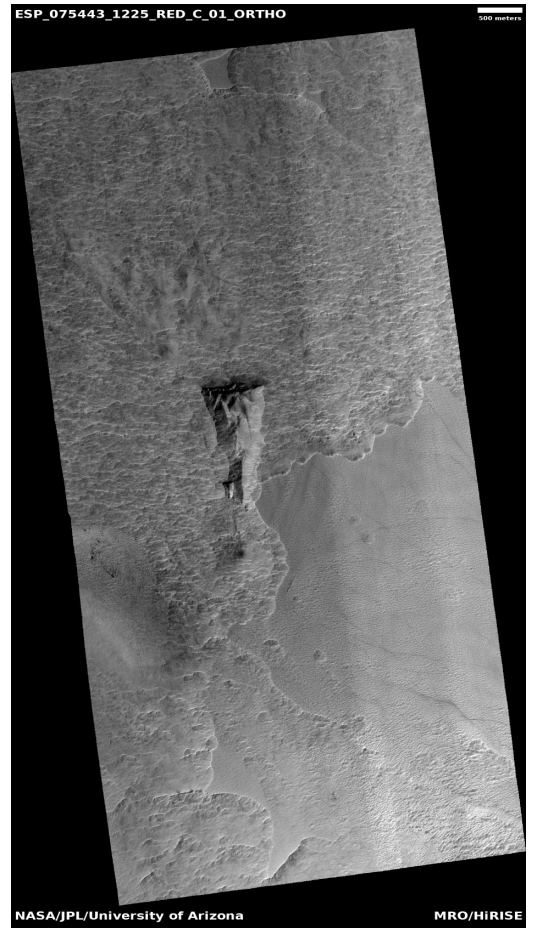
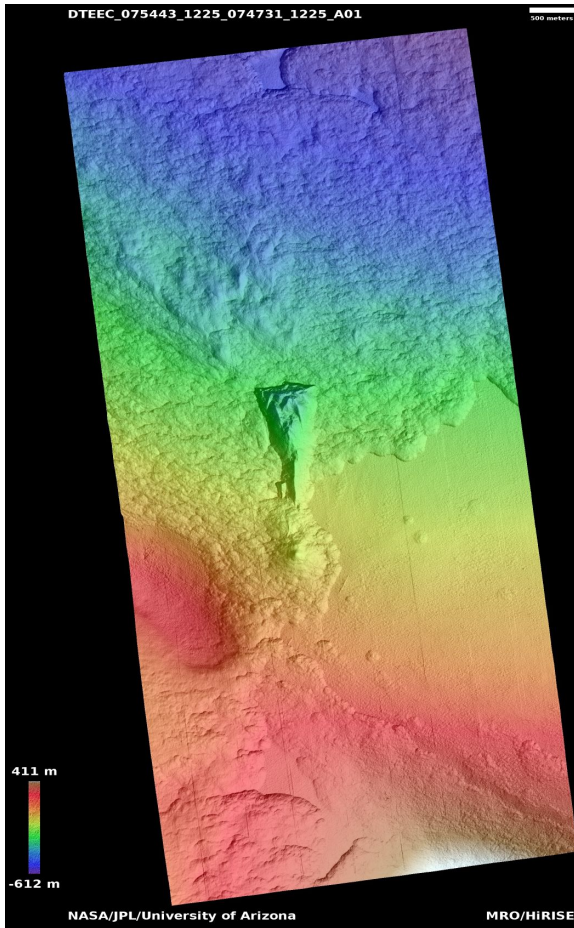
For more details about this DTM, visit:

https://www.uahirise.org/dtm/ESP_081500_2090



Scarp monitoring

DTEEC_075443_1225_074731_1225_A01



Latitude: -55.0 **Longitude:** 47.2

DTM Producer: LPG | NOÉ LE BECQ

Stereo Pair:

ESP_075443_1225

ESP_074731_1225

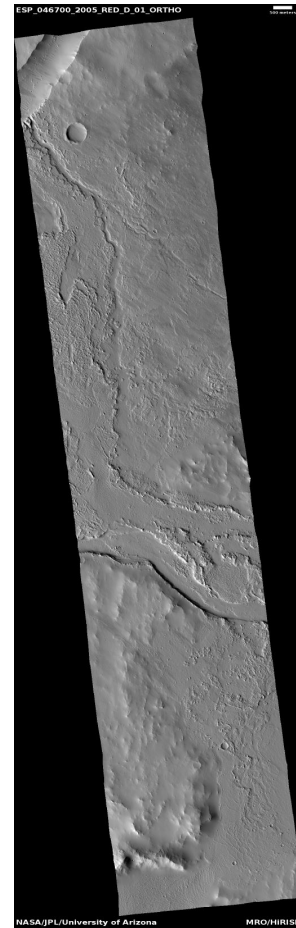
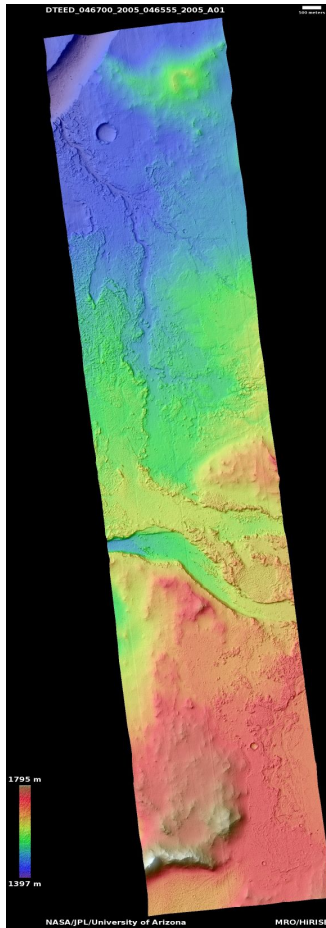
For more details about this DTM, visit:

https://www.uahirise.org/dtm/ESP_075443_1225



Lava flow and channels near Olympica Fossae

DTEED_046700_2005_046555_2005_A01



Latitude: 20.4 **Longitude:** 242.0

DTM Producer: UA | DORA ELALAOUI-PINEDO

Stereo Pair:

ESP_046555_2005
ESP_046700_2005

For more details about this DTM, visit:

https://www.uahirise.org/dtm/ESP_046700_2005

