



HIGH RESOLUTION IMAGING SCIENCE EXPERIMENT



COLLEGE OF SCIENCE
**LUNAR & PLANETARY
LABORATORY**

DTM PDS RELEASES

January 2025

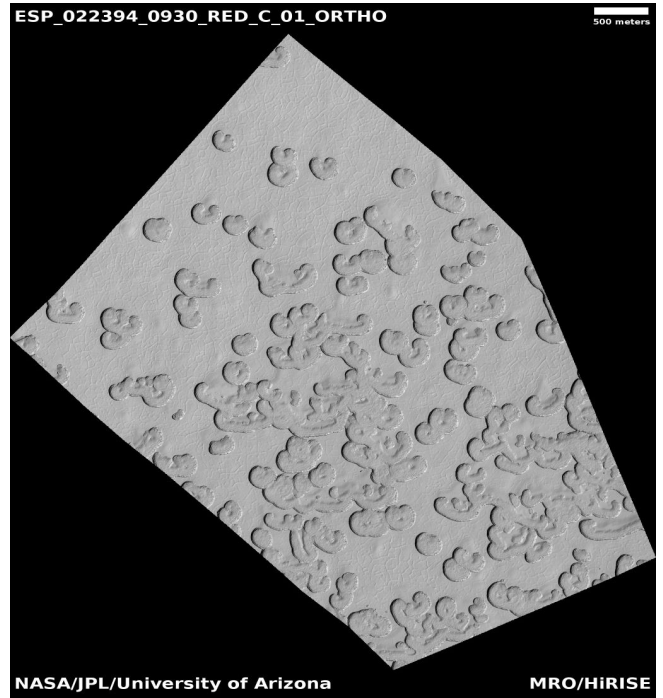
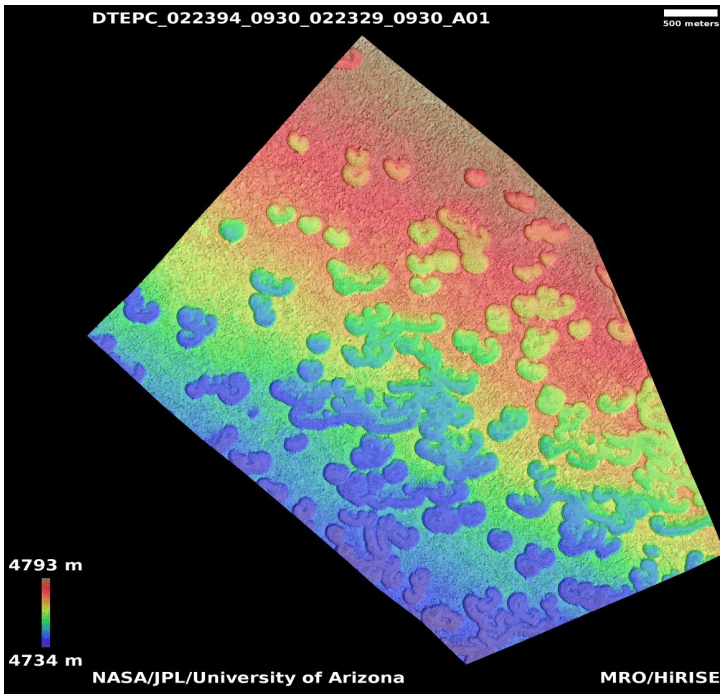
Edited by Kris Akers | UA

DTMs Included this Month

Seasonal polar cap monitoring site	1
Dune monitoring in Milankovic Crater	2
Degraded crater in Utopia region	3

Seasonal polar cap monitoring site

DTEPC_022394_0930_022329_0930_A01



Latitude: -86.9 **Longitude:** 353.9

DTM Producer: UA | DORA ELALAOUI-PINEDO

Stereo Pair:

ESP_022394_0930

ESP_022329_0930

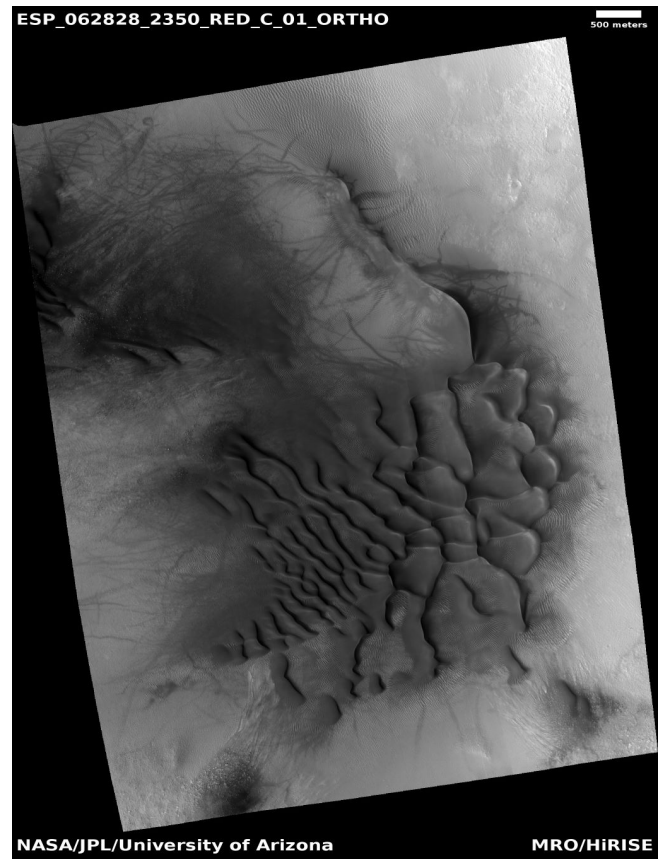
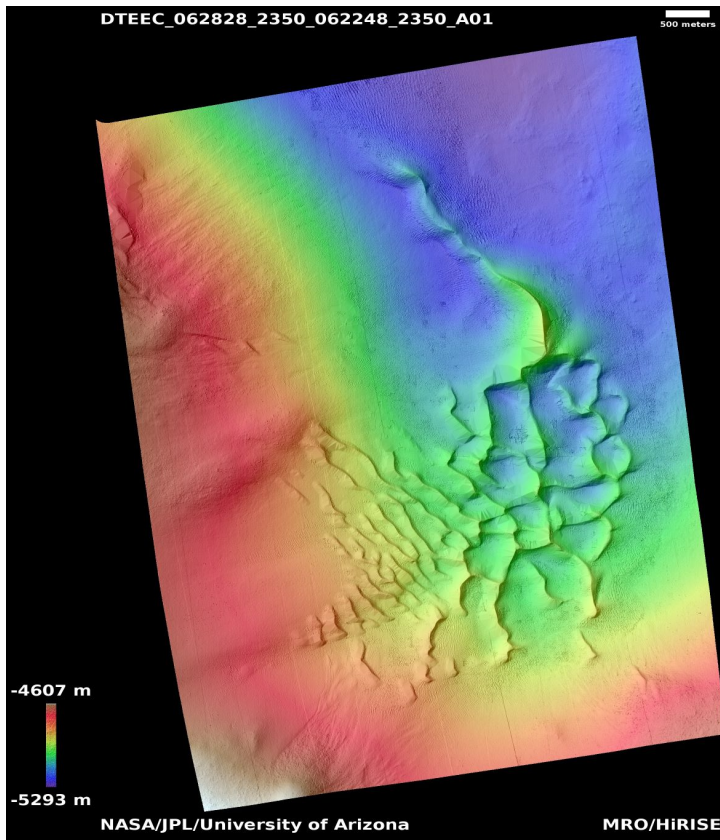
For more details about this DTM, visit:

https://www.uahirise.org/dtm/ESP_022394_0930



Dune monitoring in Milankovic Crater

DTEEC_062828_2350_062248_2350_A01



Latitude: 54.5 **Longitude:** 213.5

DTM Producer: UA | DORA ELALAOUI-PINEDO

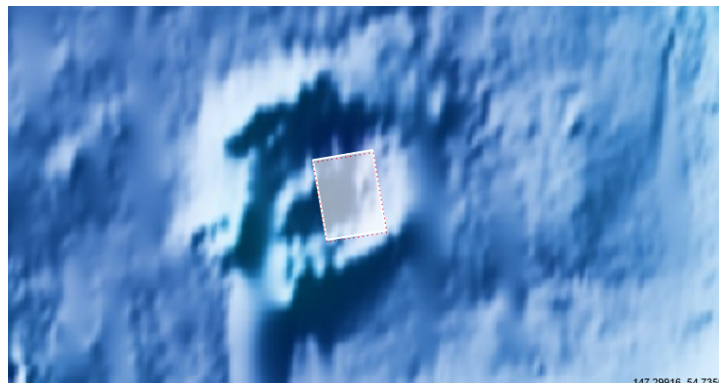
Stereo Pair:

ESP_062828_2350

ESP_062248_2350

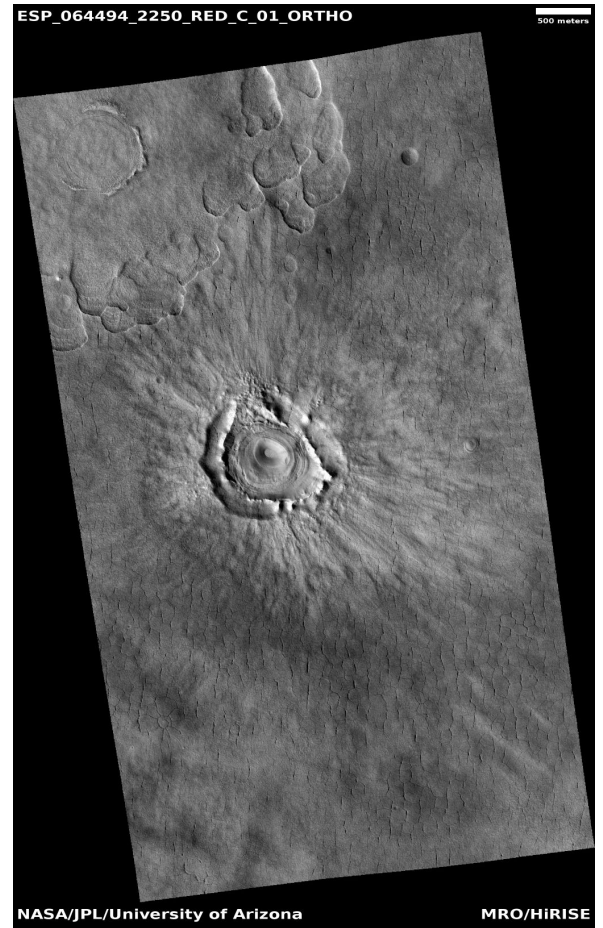
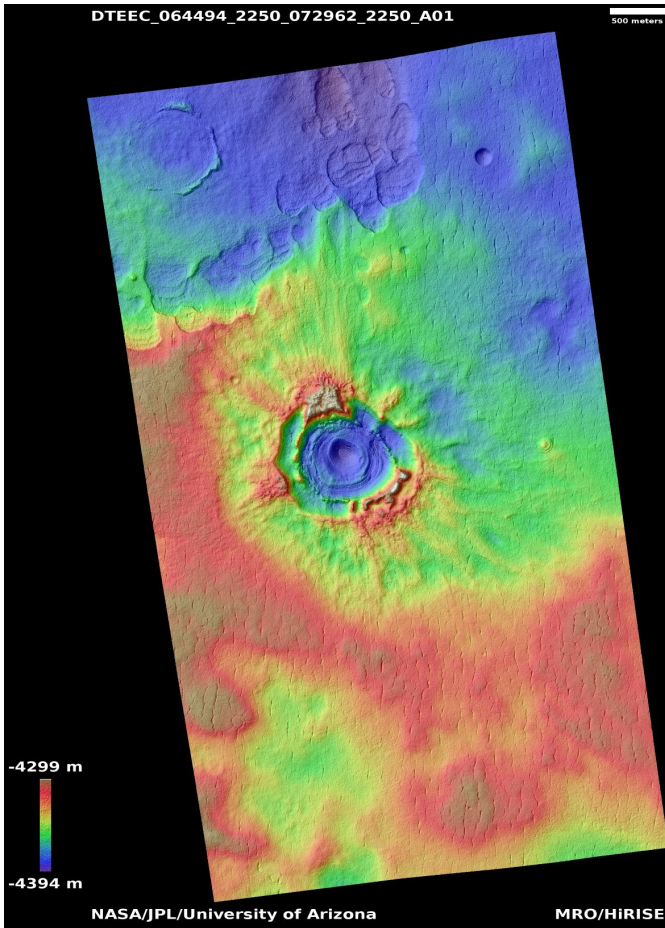
For more details about this DTM, visit:

https://www.uahirise.org/dtm/ESP_062828_2350



Degraded crater in Utopia region

DTEEC_064494_2250_072962_2250_A01



Latitude: 44.5 **Longitude:** 91.2

DTM Producer: UA | DORA ELALAOUI-PINEDO

Stereo Pair:

ESP_064494_2250

ESP_072962_2250

For more details about this DTM, visit:

https://www.uahirise.org/dtm/ESP_064494_2250

