



HIGH RESOLUTION IMAGING SCIENCE EXPERIMENT



DTM PDS RELEASES

January 2024

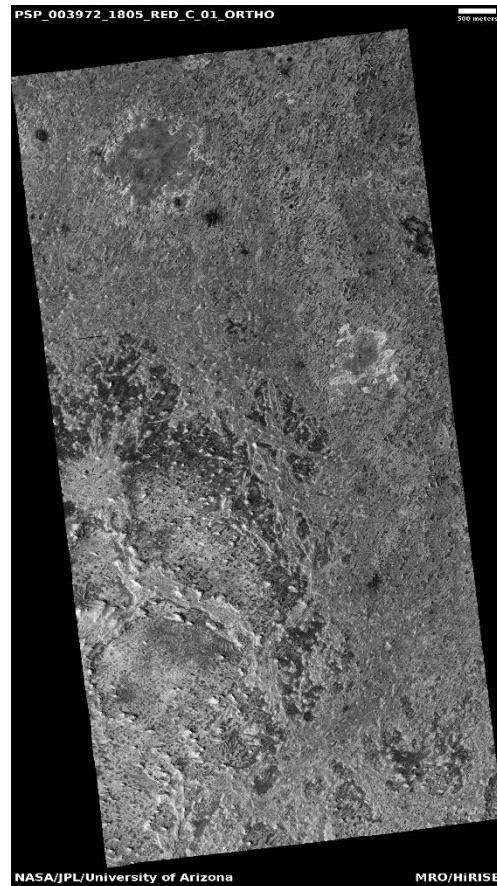
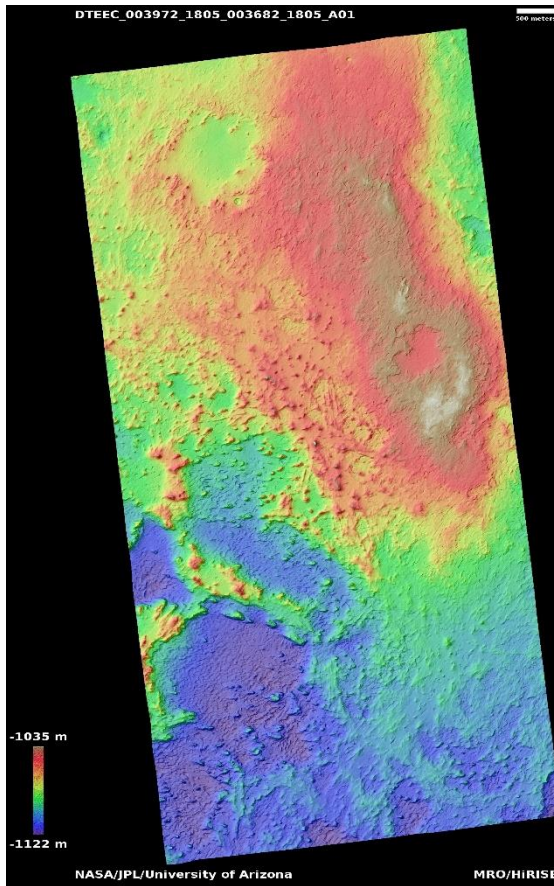
Edited by Kris Akers | UA

DTMs Included this Month

Light-toned ridges in Meridiani region.....	1
Phyllosilicates in Acidalia region.....	2
Complex morphology in Acidalia region.....	3
Floor of east Candor Chasma.....	4
Change detection in chain of small pits north of Alba Mons.....	5
Stratified buttes in Acidalia Planitia.....	6
Mesa in Chryse Planitia.....	7
Intriguing dark dunes in Proctor Crater.....	8
Exposure of layered bedrock northwest of Hellas Planitia.....	9
Rayed crater.....	10
Polar cap monitoring site.....	11
Crater layers.....	12

Light-toned ridges in Meridiani region

DTEEC_003972_1805_003682_1805_A01



0.3°N 5.2°E

DTM Producer: UA | Kris Akers

Stereo Pair:

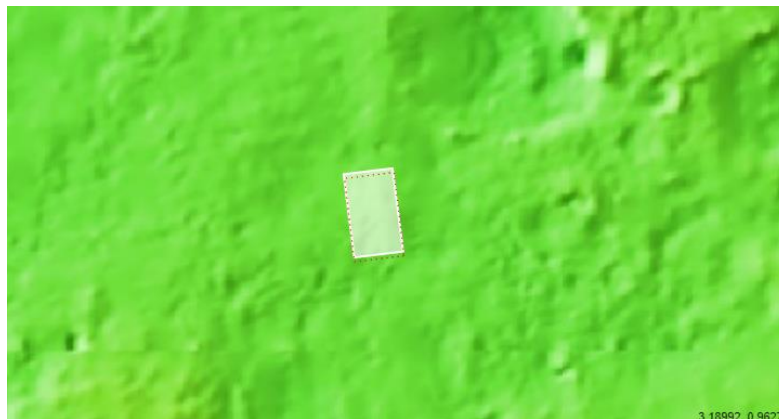
PSP_003972_1805

PSP_003682_1805

For more details about this DTM, visit:

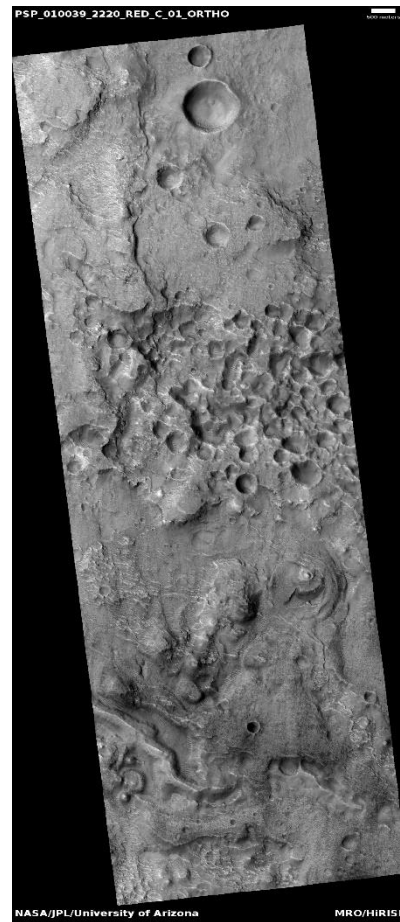
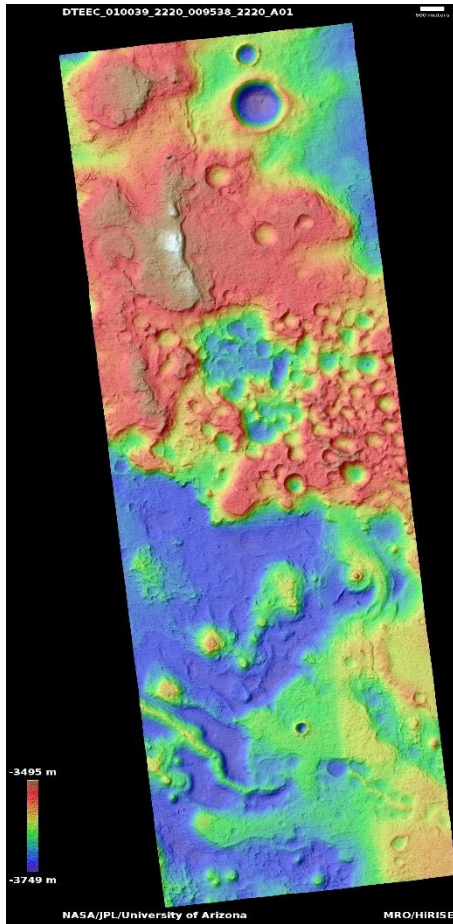
[https://www.uahirise.org/dtm/dtm.php?](https://www.uahirise.org/dtm/dtm.php?ID=PSP_003972_1805)

[ID=PSP_003972_1805](https://www.uahirise.org/dtm/dtm.php?ID=PSP_003972_1805)



Phyllosilicates in Acidalia region

DTEEC_010039_2220_009538_2220_A01



41.8°N 309.8°E

DTM Producer: UA | Kris Akers

Stereo Pair:

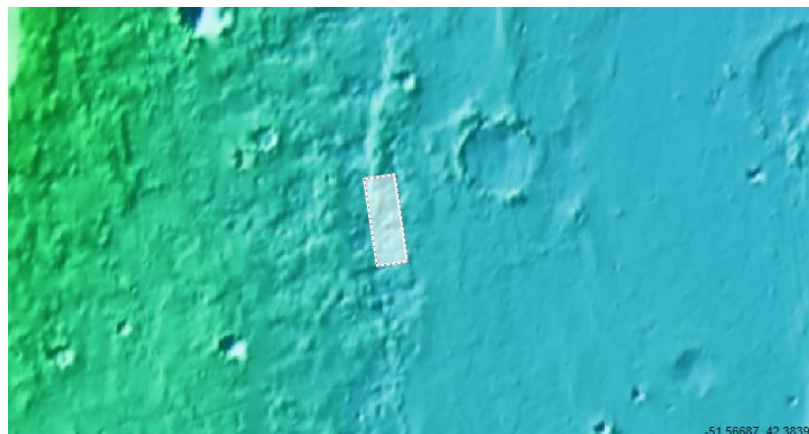
PSP_010039_2220

PSP_009538_2220

For more details about this DTM, visit:

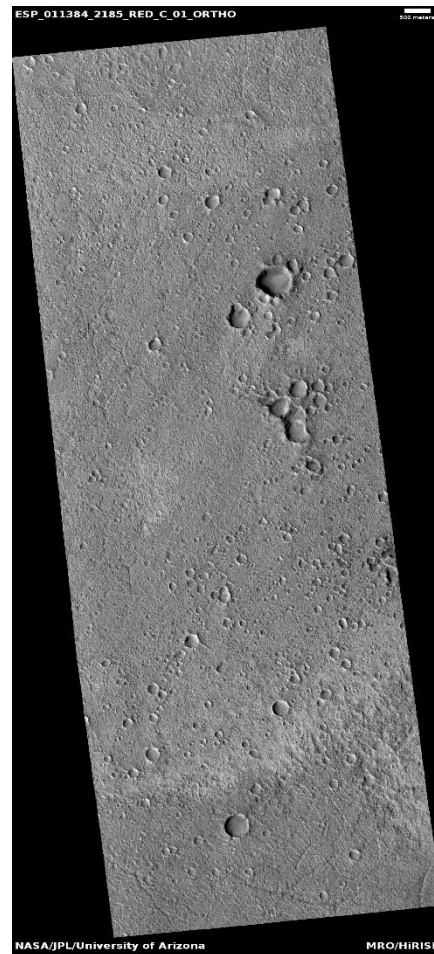
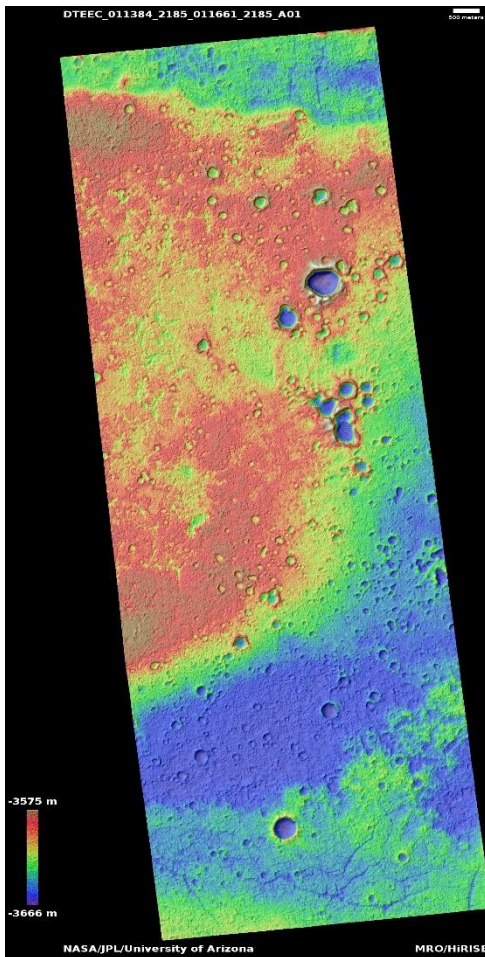
[https://www.uahirise.org/dtm/dtm.php?](https://www.uahirise.org/dtm/dtm.php?ID=PSP_010039_2220)

[ID=PSP_010039_2220](https://www.uahirise.org/dtm/dtm.php?ID=PSP_010039_2220)



Complex morphology in Acidalia region

DTEEC_011384_2185_011661_2185_A01



38.0°N 310.9°E

DTM Producer: UA | Kris Akers

Stereo Pair:

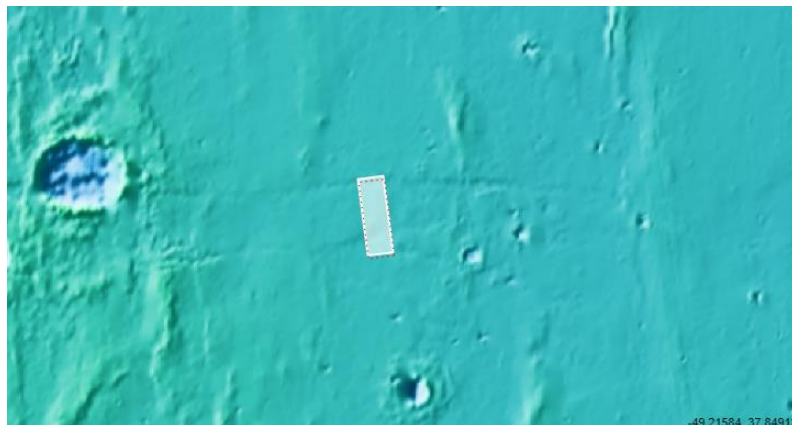
ESP_011384_2185

ESP_011661_2185

For more details about this DTM, visit:

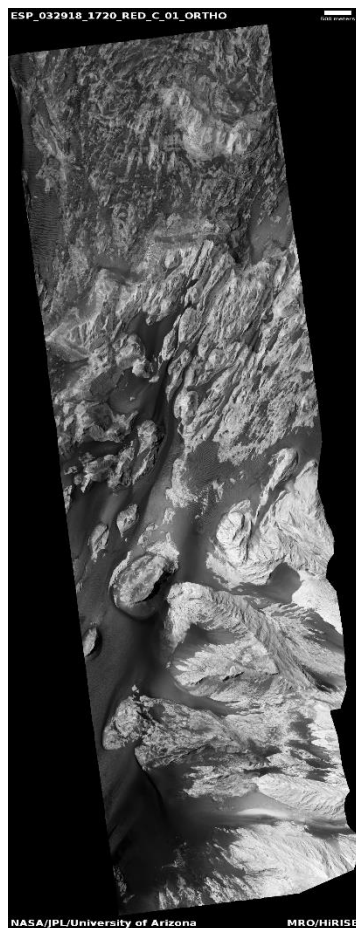
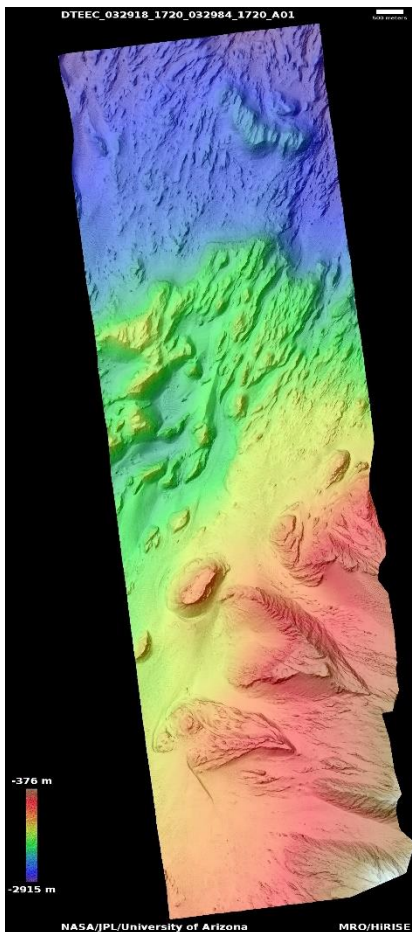
[https://www.uahirise.org/dtm/dtm.php?](https://www.uahirise.org/dtm/dtm.php?ID=ESP_011384_2185)

[ID=ESP_011384_2185](https://www.uahirise.org/dtm/dtm.php?ID=ESP_011384_2185)



Floor of east Candor Chasma

DTEEC_032918_1720_032984_1720_A01



7.8°S 295.4°E

DTM Producer: UA | Kris Akers

Stereo Pair:

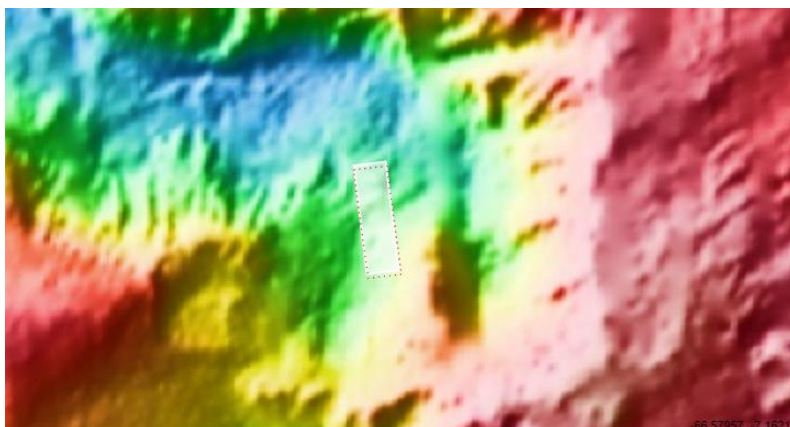
ESP_032918_1720

ESP_032984_1720

For more details about this DTM, visit:

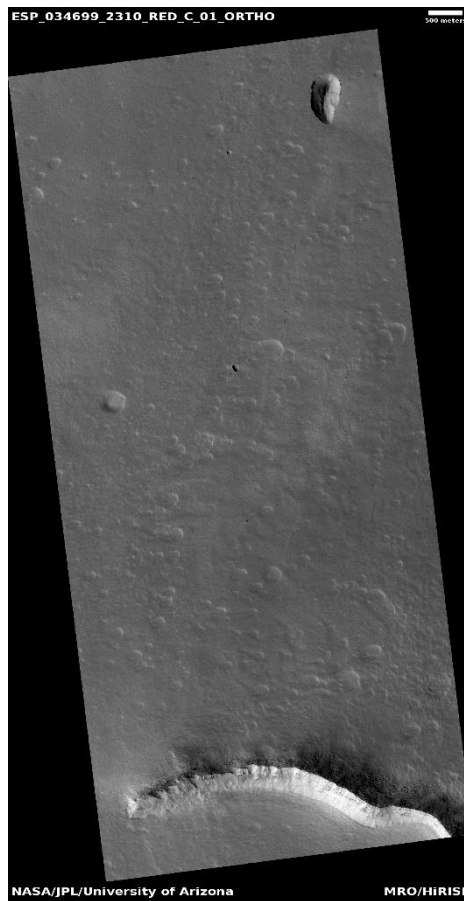
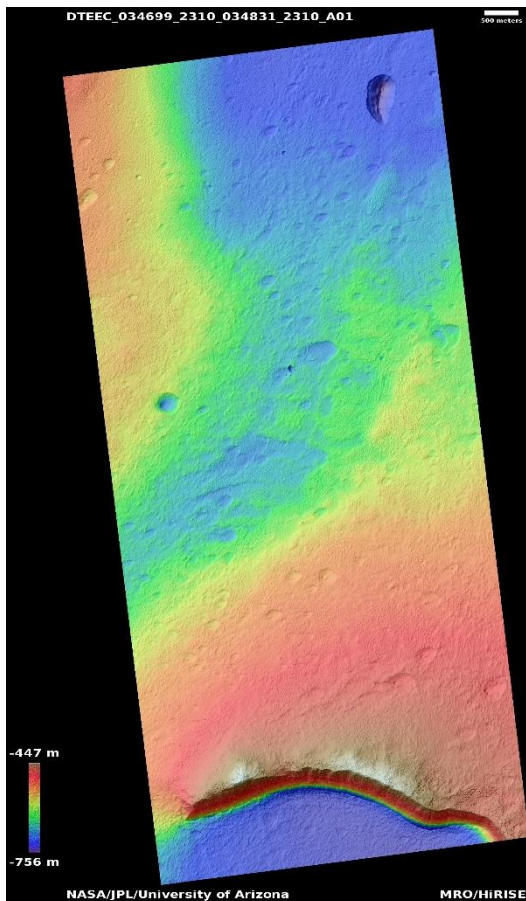
[https://www.uahirise.org/dtm/dtm.php?](https://www.uahirise.org/dtm/dtm.php?ID=ESP_032918_1720)

[ID=ESP_032918_1720](https://www.uahirise.org/dtm/dtm.php?ID=ESP_032918_1720)



Change detection in chain of small pits north of Alba Mons

DTEEC_034699_2310_034831_2310_A01



50.5°N 263.0°E

DTM Producer: UA | Maximus X Cabrera

Stereo Pair:

ESP_034699_2310

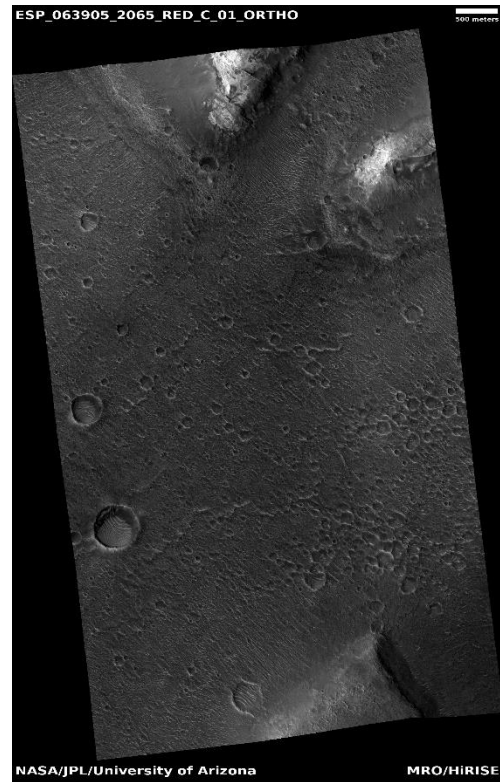
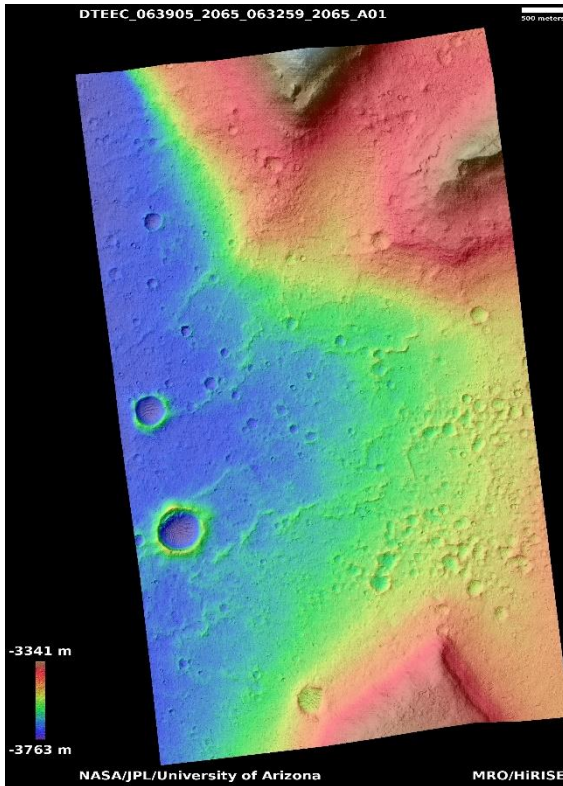
ESP_034831_2310

For more details about this DTM, visit:
https://www.uahirise.org/dtm/dtm.php?ID=ESP_034699_2310



Stratified buttes in Acidalia Planitia

DTEEC_063905_2065_063259_2065_A01



26.1°N 335.1°E

DTM Producer: UA | Branden M Gosse

Stereo Pair:

ESP_063905_2065

ESP_063259_2065

For more details about this DTM, visit:

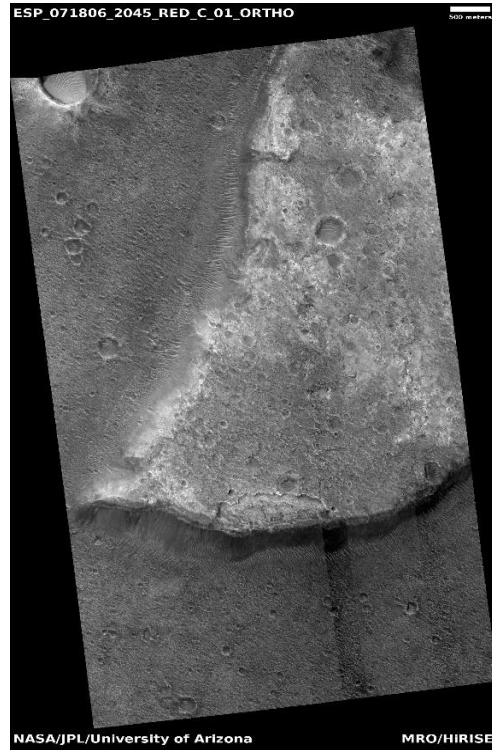
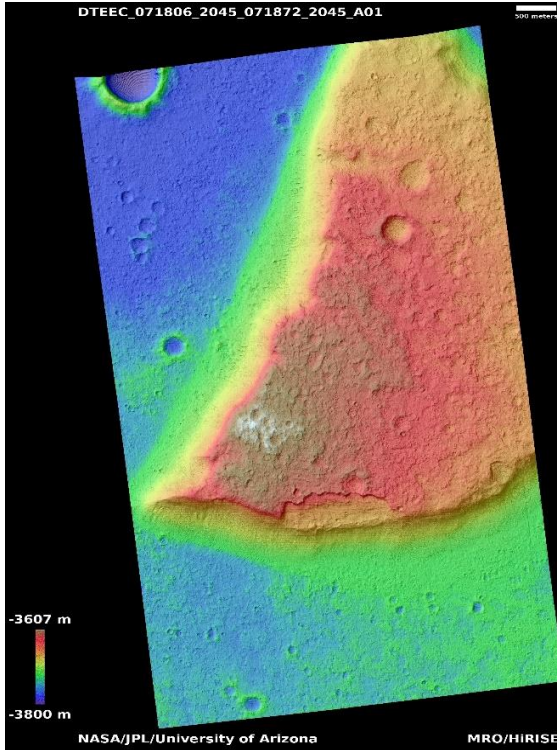
[https://www.uahirise.org/dtm/dtm.php?](https://www.uahirise.org/dtm/dtm.php?ID=ESP_063905_2065)

[ID=ESP_063905_2065](https://www.uahirise.org/dtm/dtm.php?ID=ESP_063905_2065)



Mesa in Chryse Planitia

DTEEC_071806_2045_071872_2045_A01



24.2°N 333.9°E

DTM Producer: UA | Branden M Gosse

Stereo Pair:

ESP_071806_2045

ESP_071872_2045

For more details about this DTM, visit:

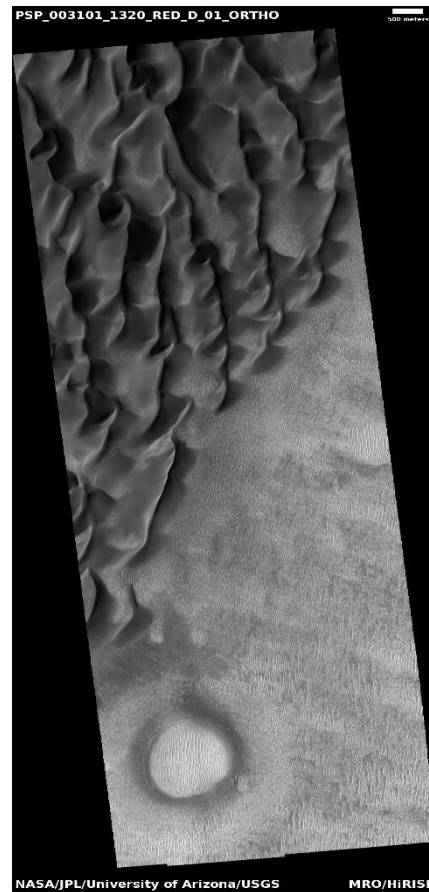
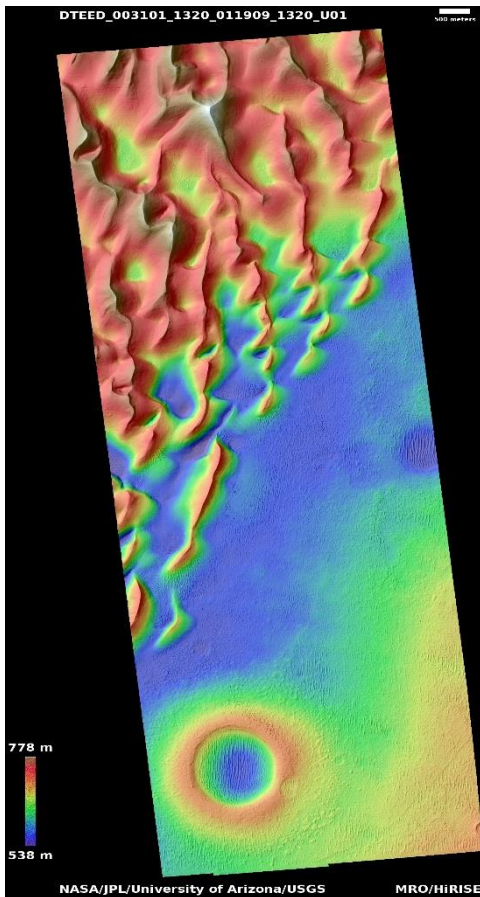
[https://www.uahirise.org/dtm/dtm.php?](https://www.uahirise.org/dtm/dtm.php?ID=ESP_071806_2045)

[ID=ESP_071806_2045](https://www.uahirise.org/dtm/dtm.php?ID=ESP_071806_2045)



Intriguing dark dunes in Proctor Crater

DTEED_003101_1320_011909_1320_U01



47.8°S 30.7°E

DTM Producer: USGS | Astrogeology

Stereo Pair:

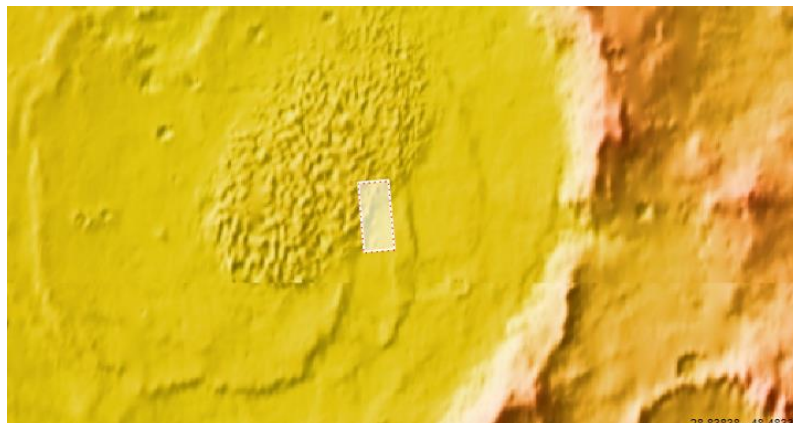
PSP_003101_1320

ESP_011909_1320

For more details about this DTM, visit:

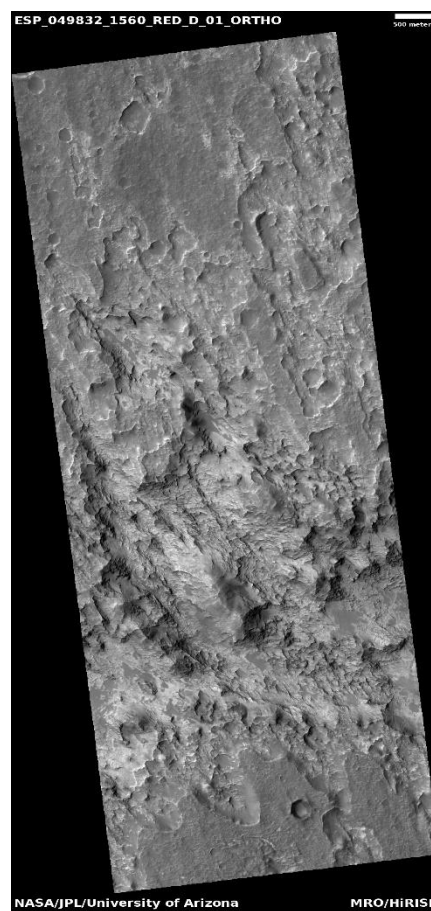
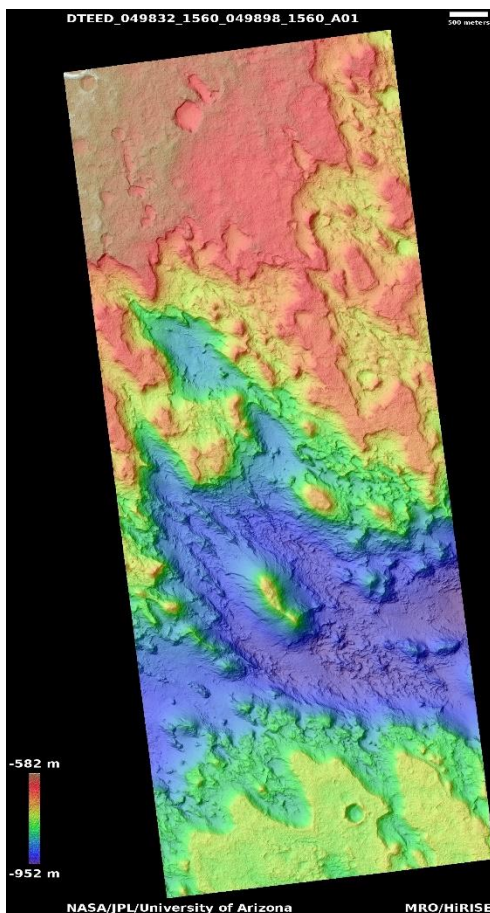
[https://www.uahirise.org/dtm/dtm.php?](https://www.uahirise.org/dtm/dtm.php?ID=PSP_003101_1320)

[ID=PSP_003101_1320](https://www.uahirise.org/dtm/dtm.php?ID=PSP_003101_1320)



Exposure of layered bedrock northwest of Hellas Planitia

DTEED_049832_1560_049898_1560_A01



23.9°S 57.4°E

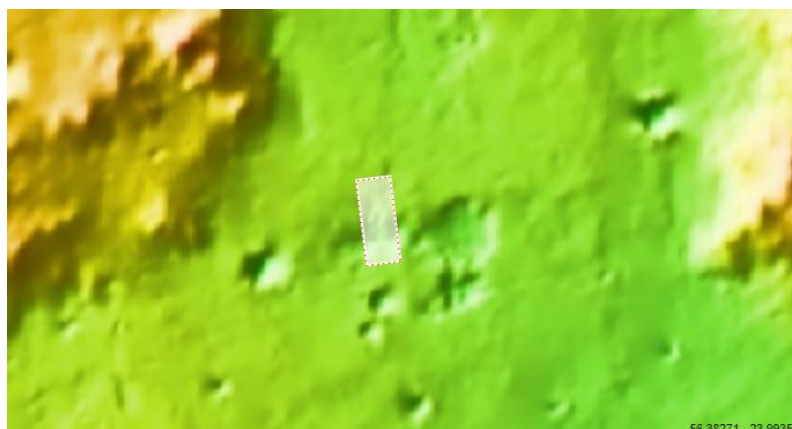
DTM Producer: UA | Maximus X Cabrera

Stereo Pair:

ESP_049832_1560

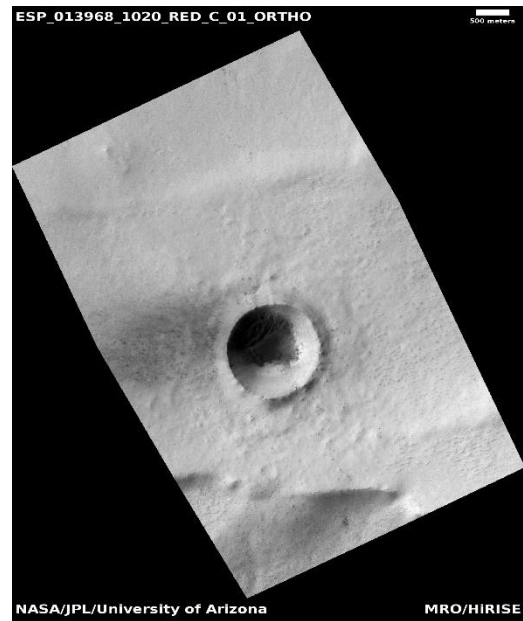
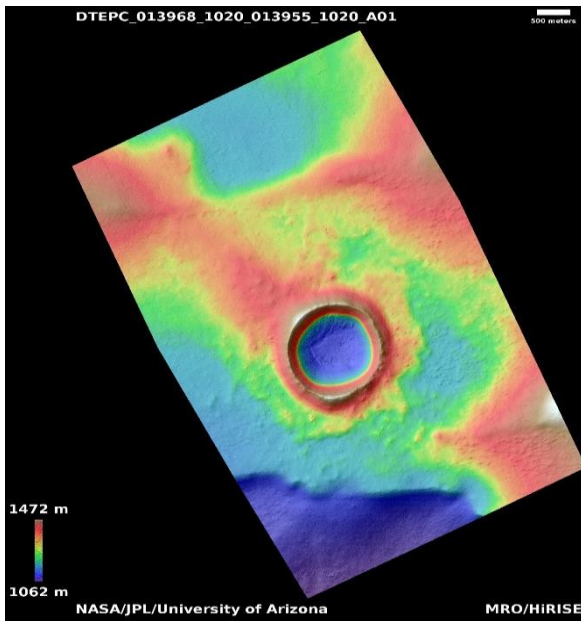
ESP_049898_1560

For more details about this DTM, visit:
[https://www.uahirise.org/dtm/dtm.php?
ID=ESP_049832_1560](https://www.uahirise.org/dtm/dtm.php?ID=ESP_049832_1560)



Rayed crater

DTEPC_013968_1020_013955_1020_A01



77.9°S 345.4°E

DTM Producer: UA | Maximus X Cabrera

Stereo Pair:

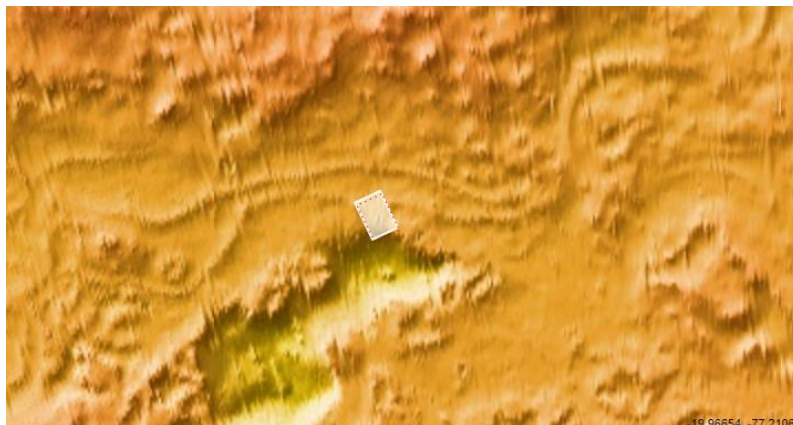
ESP_013968_1020

ESP_013955_1020

For more details about this DTM, visit:

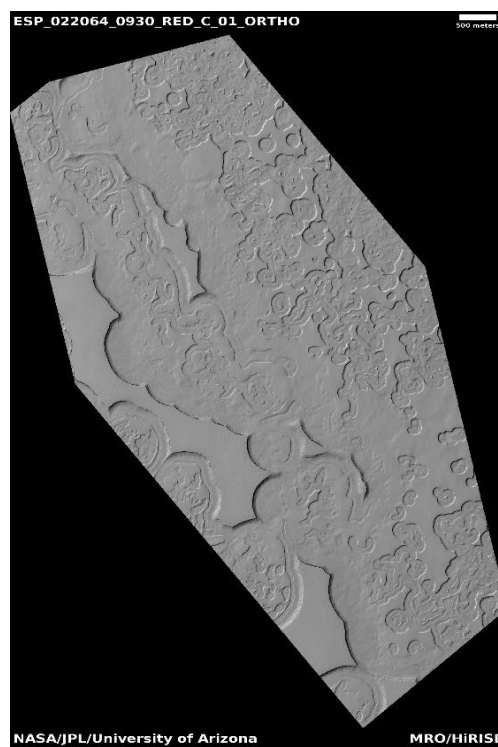
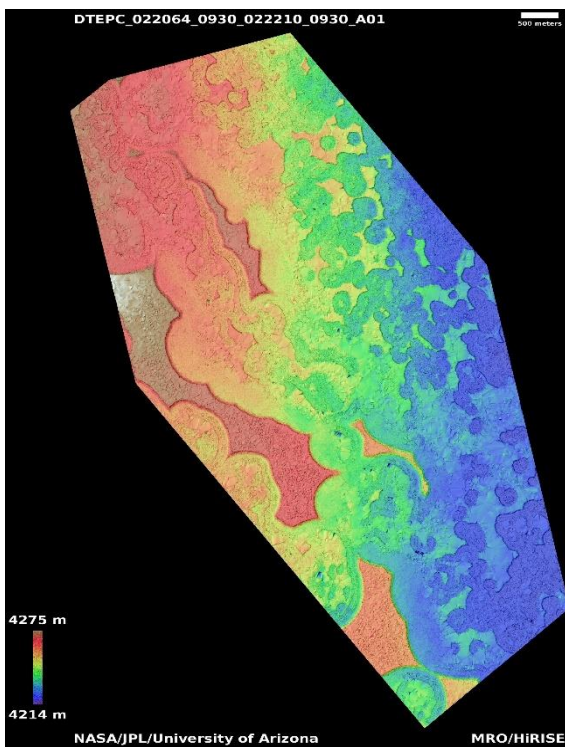
[https://www.uahirise.org/dtm/dtm.php?](https://www.uahirise.org/dtm/dtm.php?ID=ESP_013968_1020)

[ID=ESP_013968_1020](https://www.uahirise.org/dtm/dtm.php?ID=ESP_013968_1020)



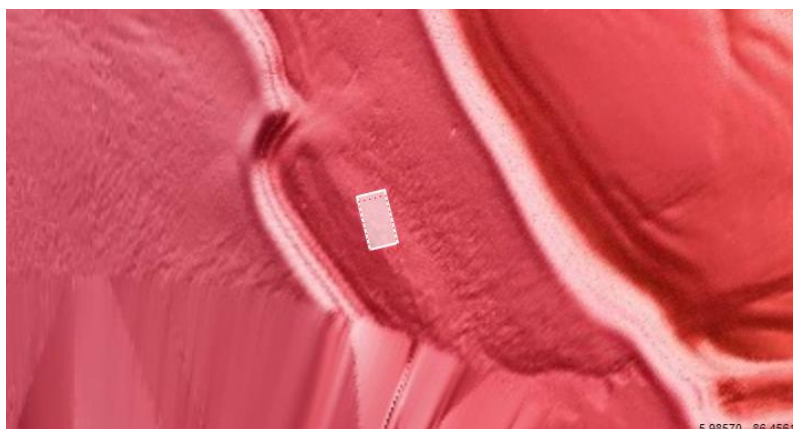
Polar cap monitoring site

DTEPC_022064_0930_022210_0930_A01



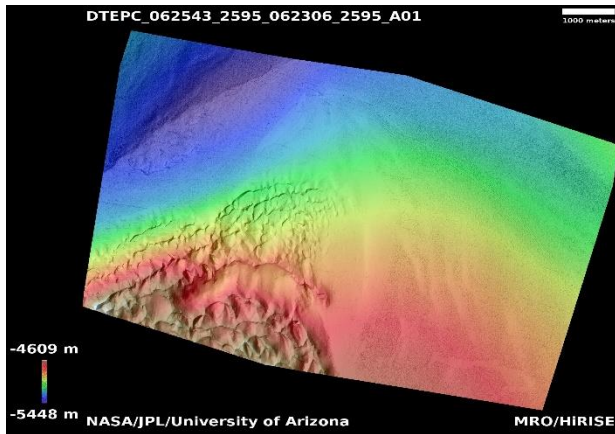
86.7°S 16.2°E
DTM Producer: UA | Branden M Gosse
Stereo Pair:
ESP_022064_0930
ESP_022210_0930

For more details about this DTM, visit:
https://www.uahirise.org/dtm/dtm.php?ID=ESP_022064_0930



Crater layers

DTEPC_062543_2595_062306_2595_A01



79.1°N 60.9°E

DTM Producer: UA | Maximus X Cabrera

Stereo Pair:

ESP_062543_2595

ESP_062306_2595

Extra Orthos:

ESP_079134_2590

For more details about this DTM, visit:

[https://www.uahirise.org/dtm/dtm.php?](https://www.uahirise.org/dtm/dtm.php?ID=ESP_062543_2595)

[ID=ESP_062543_2595](https://www.uahirise.org/dtm/dtm.php?ID=ESP_062543_2595)

