



**HIGH RESOLUTION IMAGING
SCIENCE EXPERIMENT**



DTM PDS RELEASES

January 2023

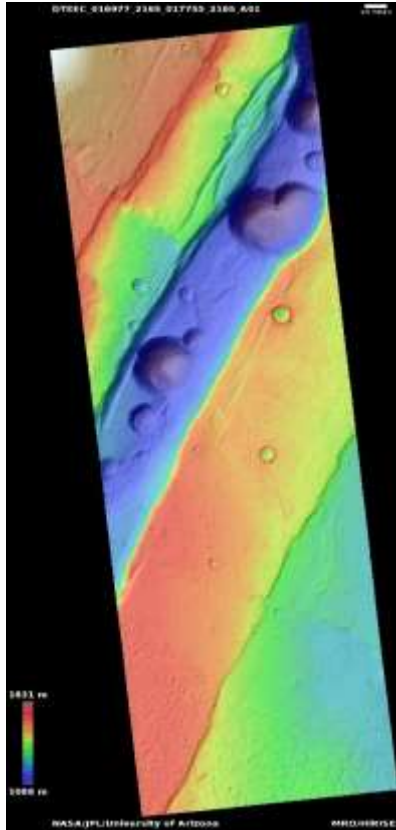
Edited by Kris Akers | UA

DTMs Included this Month

Heart-shaped pit in Acheron Catena seen in MOC M02-01153.....	1
Ophir Chasma aeolian sediment survey.....	2
Northern mid-latitude crater.....	3
Dune monitoring in candidate ExoMars landing site in Mawrth Vallis.....	4
Possible collapsed slab along walls of Mamers Valles.....	5

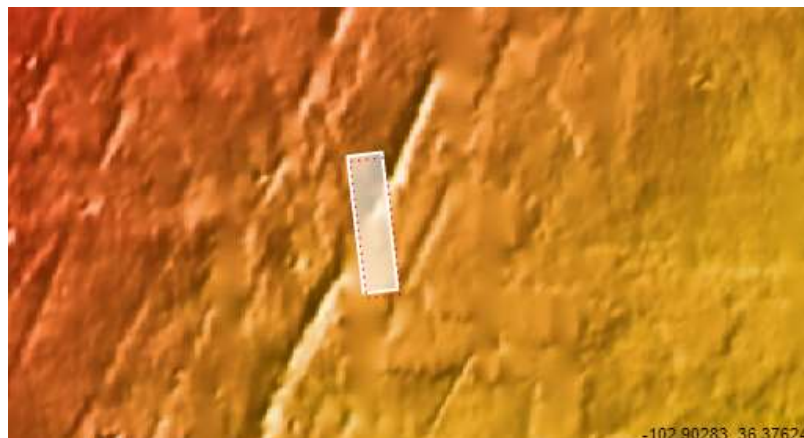
Heart-shaped pit in Acheron Catena seen in MOC M02-01153

DTEEC_016977_2165_017755_2165_A01



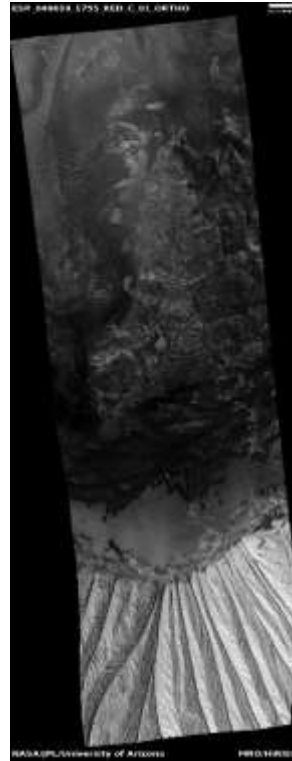
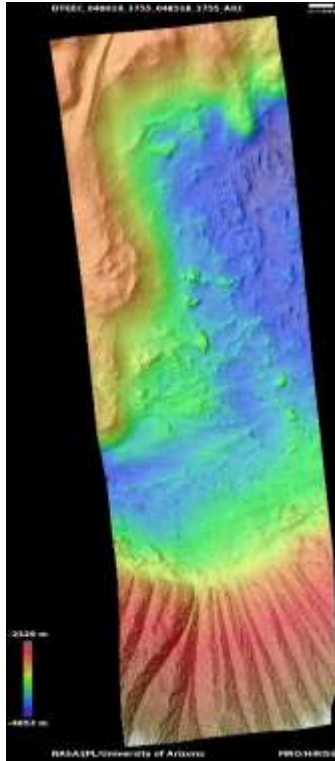
36.2°N 258.5°E
DTM Producer: UA | Kris Akers
Stereo Pair:
ESP_016977_2165
ESP_017755_2165

For more details about this DTM, visit:
[https://www.uahirise.org/dtm/dtm.php?
ID=ESP_016977_2165](https://www.uahirise.org/dtm/dtm.php?ID=ESP_016977_2165)



Ophir Chasma aeolian sediment survey

DTEEC_049019_1755_048518_1755_A01



4.3°S 289.0°E

DTM Producer: UA | Maximus X Cabrera

Stereo Pair:

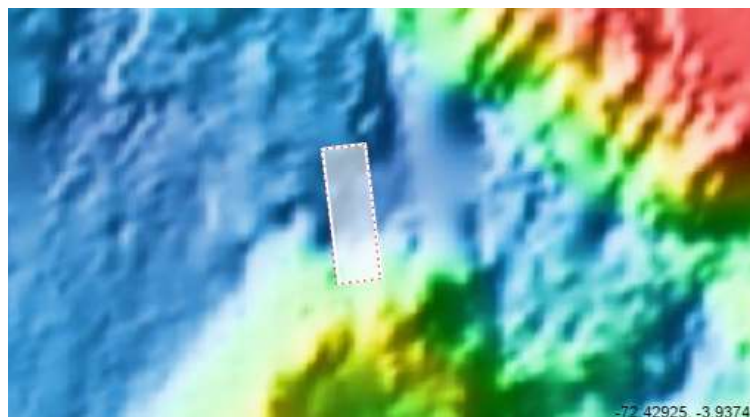
ESP_049019_1755

ESP_048518_1755

Orthos:

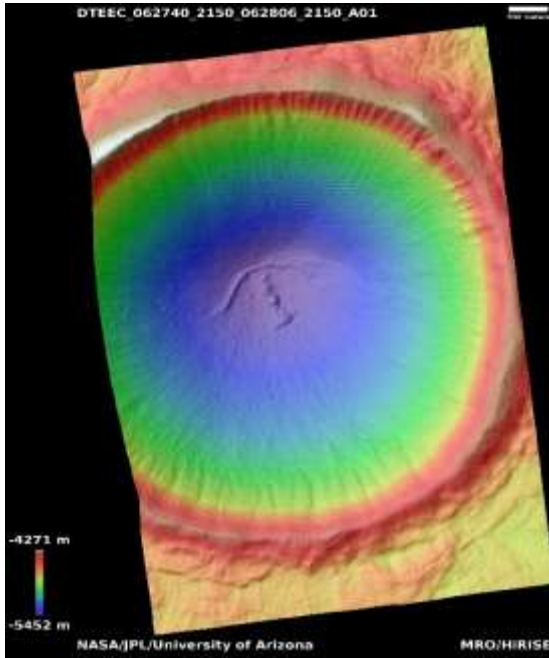
ESP_075579_1755

For more details about this DTM, visit:
https://www.uahirise.org/dtm/dtm.php?ID=ESP_049019_1755



Northern mid-latitude crater

DTEEC_062740_2150_062806_2150_A01



34.8°N 100.7E

DTM Producer: UA | Kris Akers

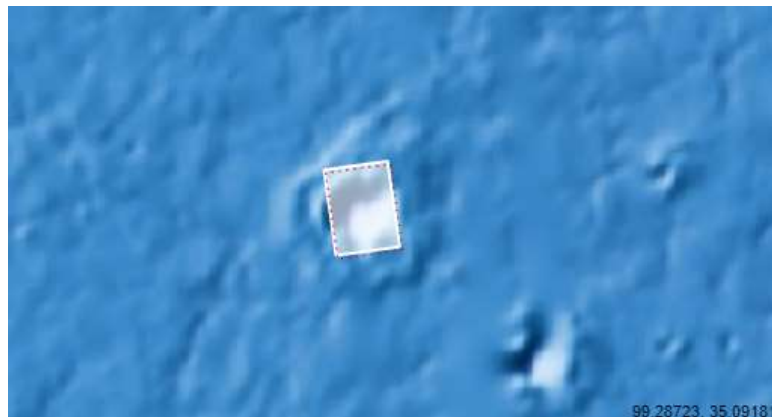
Stereo Pair:

ESP_062740_2150

ESP_062806_2150

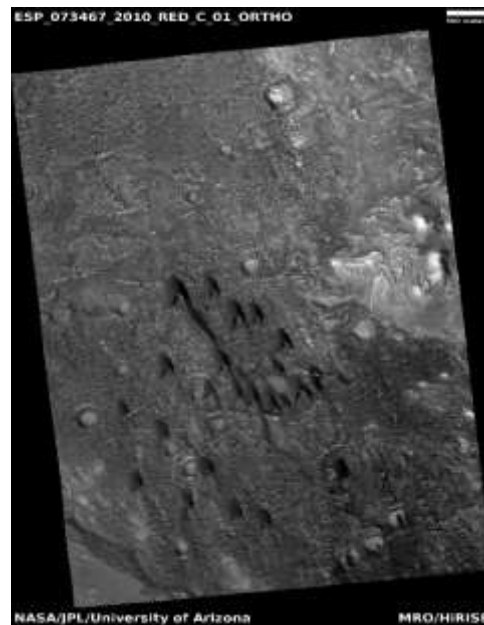
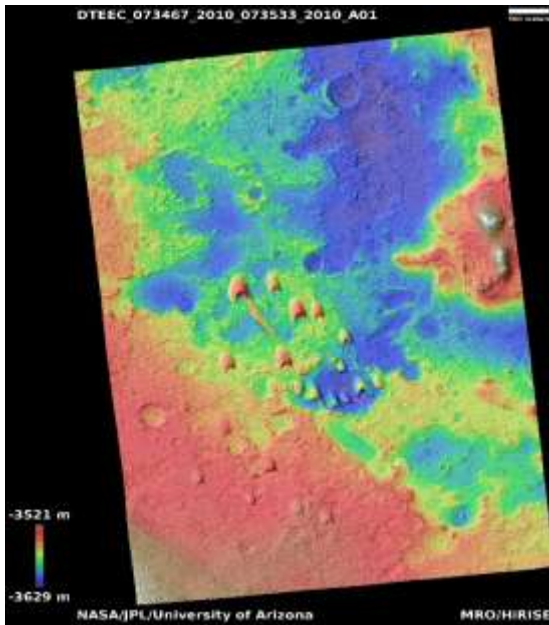
For more details about this DTM, visit:
[https://www.uahirise.org/dtm/dtm.php?](https://www.uahirise.org/dtm/dtm.php?ID=ESP_062740_2150)

[ID=ESP_062740_2150](https://www.uahirise.org/dtm/dtm.php?ID=ESP_062740_2150)



Dune monitoring in candidate ExoMars landing site in Mawrth Vallis

DTEEC_073467_2010_073533_2010_A01



20.8°N 342.5°E

DTM Producer: UA | Kris Akers

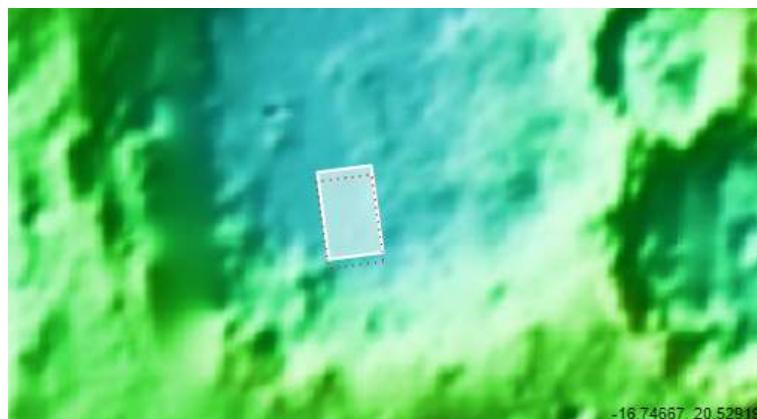
Stereo Pair:

ESP_073467_2010

ESP_073533_2010

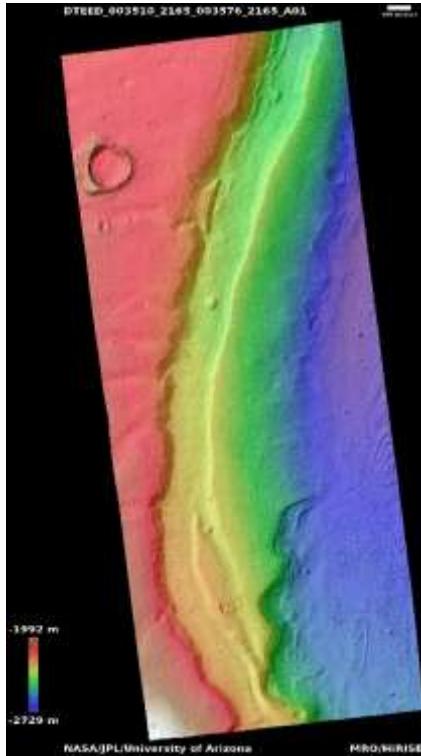
For more details about this DTM, visit:
[https://www.uahirise.org/dtm/dtm.php?](https://www.uahirise.org/dtm/dtm.php?ID=ESP_073467_2010)

[ID=ESP_073467_2010](https://www.uahirise.org/dtm/dtm.php?ID=ESP_073467_2010)



Possible collapsed slab along walls of Mammers Valles

DTEED_003510_2165_003576_2165_A01



36.3°N 15.3°E

DTM Producer: UA | Kris Akers

Stereo Pair:

PSP_003510_2165

PSP_003576_2165

For more details about this DTM, visit:
https://www.uahirise.org/dtm/dtm.php?ID=PSP_003510_2165

