



HIGH RESOLUTION IMAGING  
SCIENCE EXPERIMENT



# DTM PDS RELEASES

*February 2021*

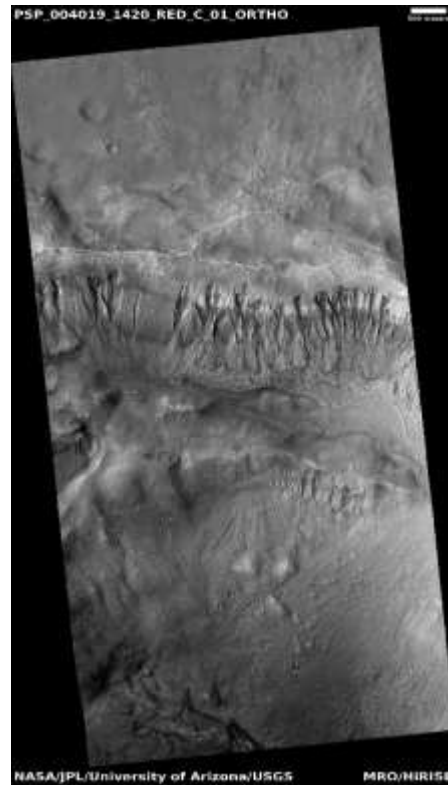
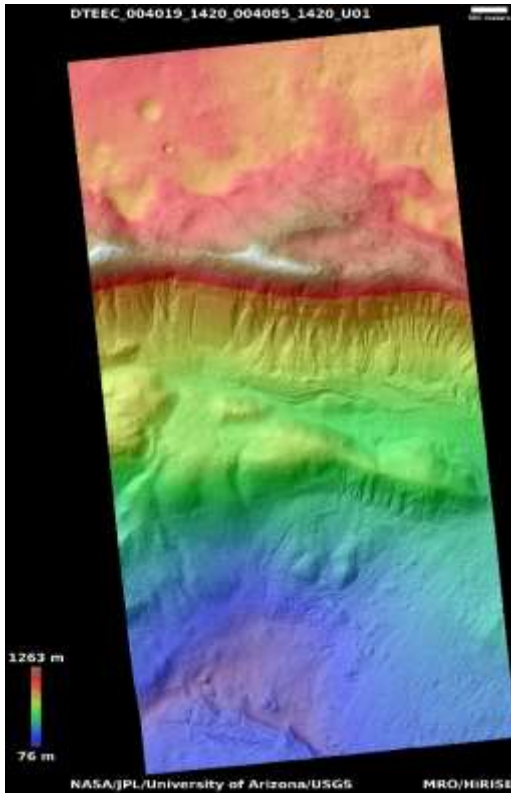
Edited by Kris Akers | UA

## DTMs Included this Month

Multiple levels of gullies seen in MOC image R11-02000.....	1
Layers overlain by dark dunes exposed in circular window.....	2
Pit near Hephaestus Fossae.....	3
Cratered cone north of Noctis Fossae.....	4
Cone close to Noctis Fossae.....	5
High-latitude exposure of north polar layered deposits.....	6

# Multiple levels of gullies seen in MOC image R11-02000

DTEEC\_004019\_1420\_004085\_1420\_U01



37.9°S 169.6°E

DTM Producer: UA | USGS-Astrogeology

Stereo Pair:

PSP\_004019\_1420

PSP\_004085\_1420

Extra Orthos:

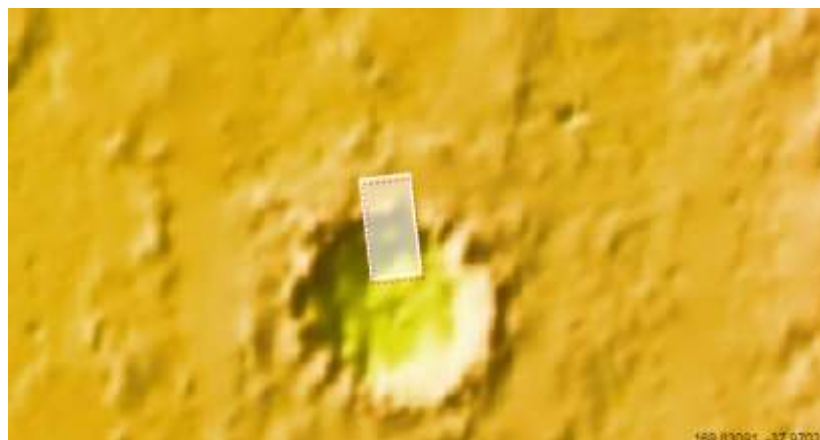
ESP\_057727\_1420

ESP\_064452\_1420

For more details about this DTM, visit:

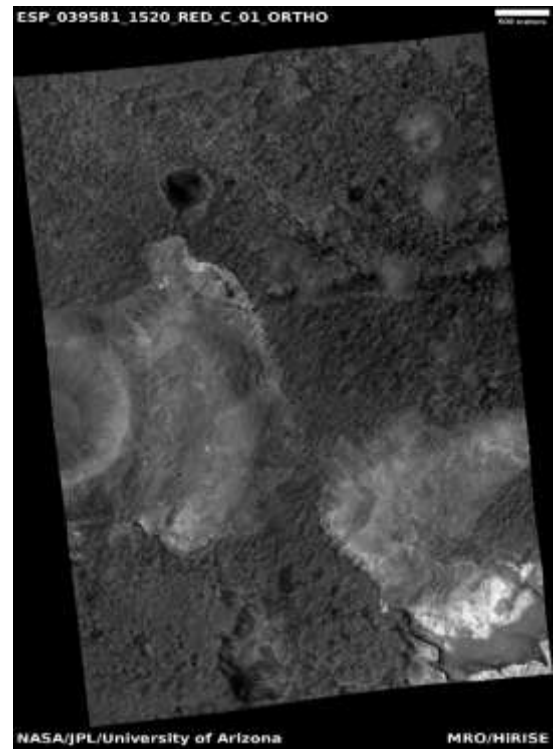
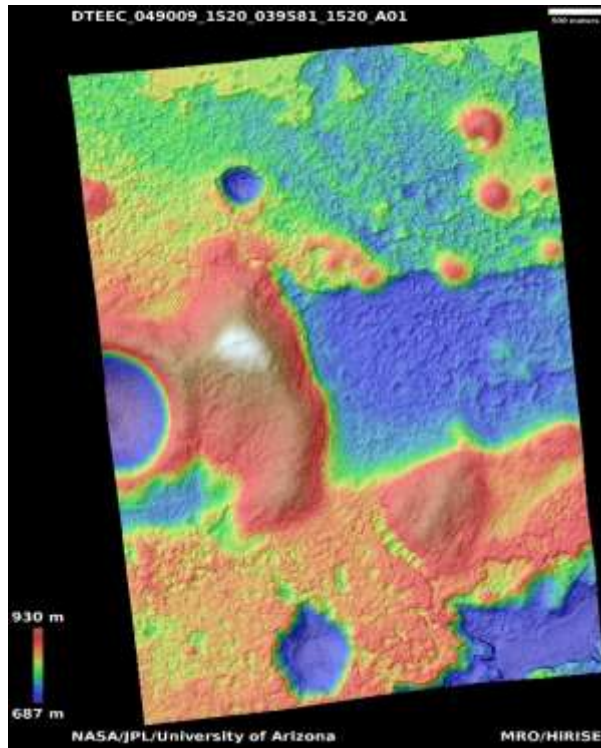
[https://www.uahirise.org/dtm/dtm.php?](https://www.uahirise.org/dtm/dtm.php?ID=PSP_004019_1420)

[ID=PSP\\_004019\\_1420](https://www.uahirise.org/dtm/dtm.php?ID=PSP_004019_1420)



# Layers overlain by dark dunes exposed in circular window

DTEEC\_049009\_1520\_039581\_1520\_A01



27.8°S 203.2°E

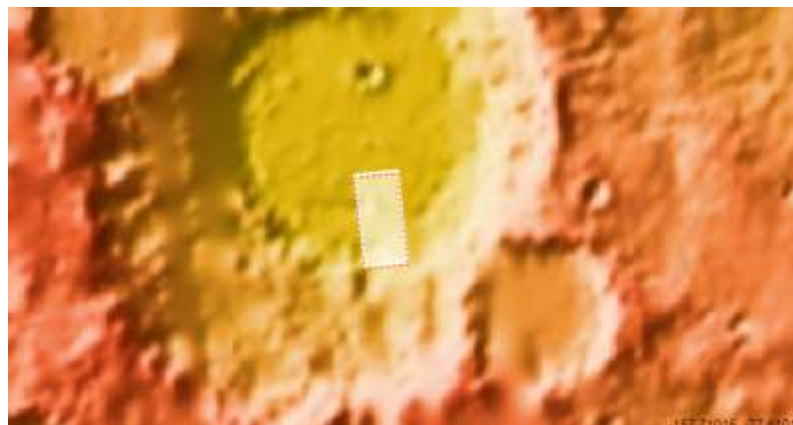
DTM Producer: UA | Shavonne Morin

Stereo Pair:

ESP\_049009\_1520

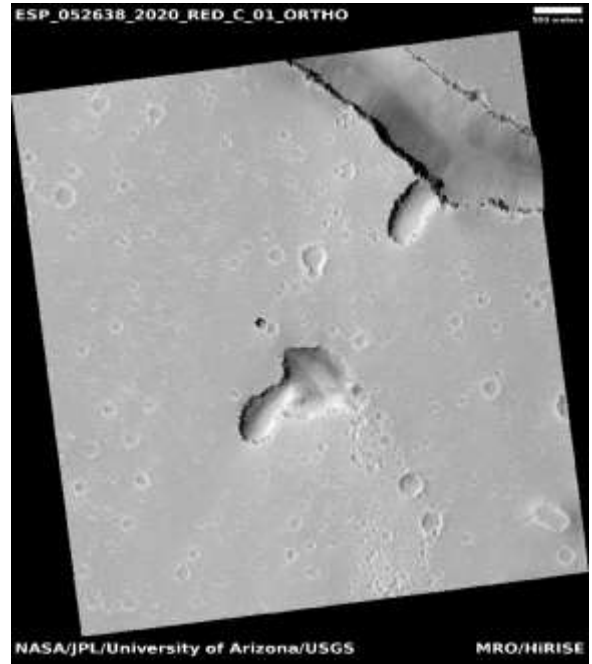
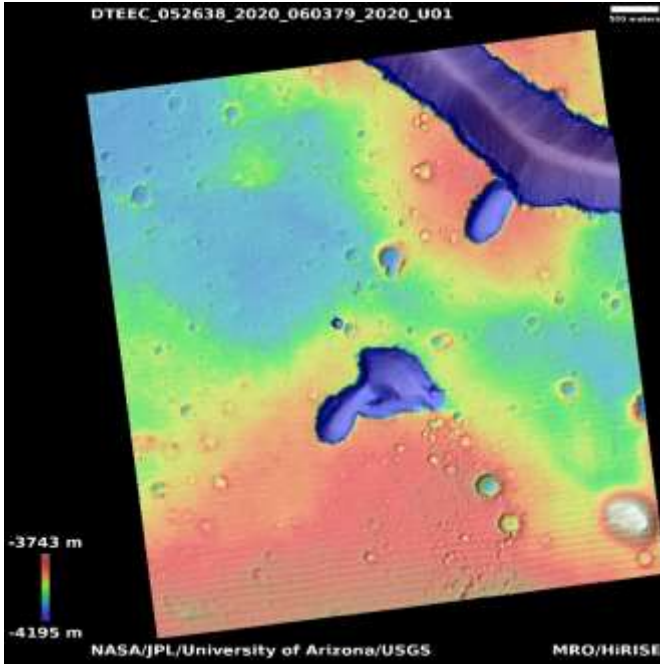
ESP\_039581\_1520

For more details about this DTM, visit:  
[https://www.uahirise.org/dtm/dtm.php?ID=ESP\\_049009\\_1520](https://www.uahirise.org/dtm/dtm.php?ID=ESP_049009_1520)



# Pit near Hephaestus Fossae

DTEEC\_052638\_2020\_060379\_2020\_U01



21.5°N 122.1°E

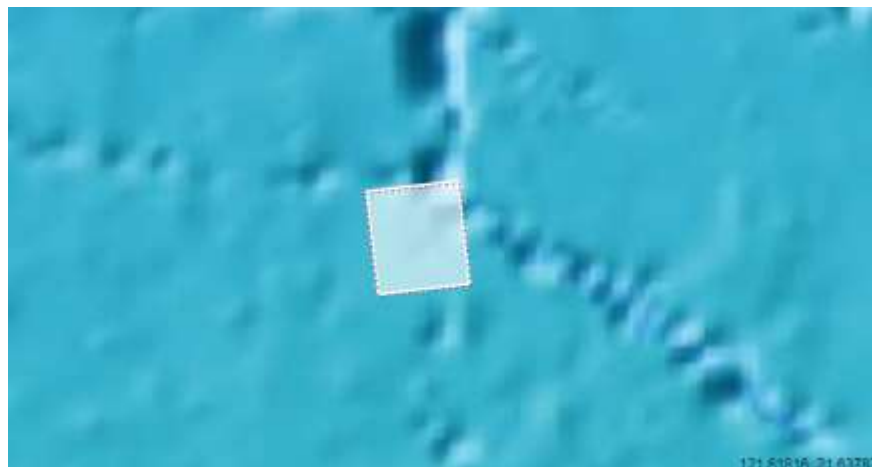
DTM Producer: UA | USGS-Astrogeology

Stereo Pair:

ESP\_052638\_2020

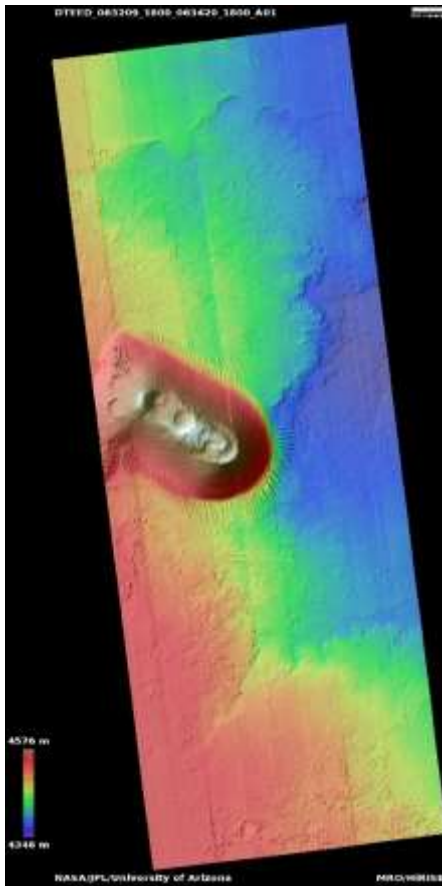
ESP\_060379\_2020

For more details about this DTM, visit:  
[https://www.uahirise.org/dtm/dtm.php?ID=ESP\\_052638\\_2020](https://www.uahirise.org/dtm/dtm.php?ID=ESP_052638_2020)



# Cratered cone north of Noctis Fossae

DTEED\_063209\_1800\_063420\_1800\_A01



0.1°S 261.2°E

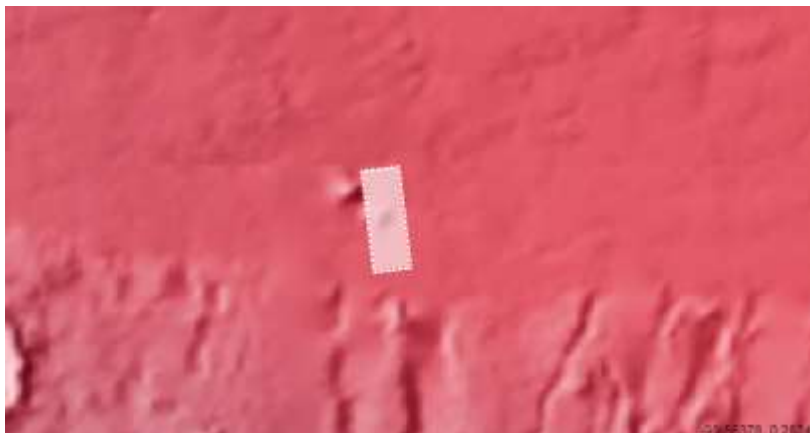
DTM Producer: UA | Kris Akers

Stereo Pair:

ESP\_063209\_1800

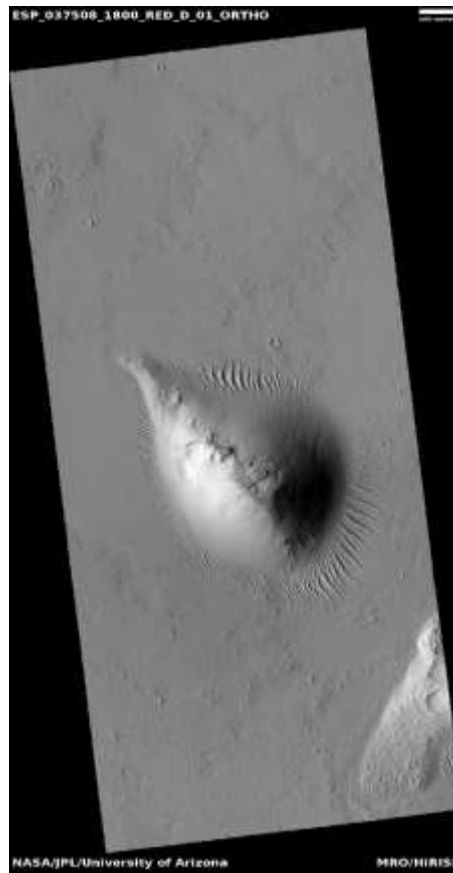
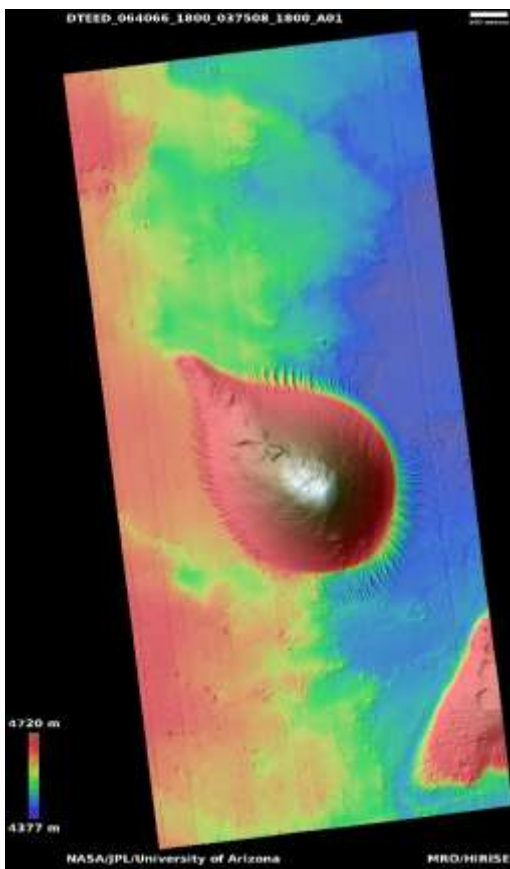
ESP\_063420\_1800

For more details about this DTM, visit:  
[https://www.uahirise.org/dtm/dtm.php?ID=ESP\\_063209\\_1800](https://www.uahirise.org/dtm/dtm.php?ID=ESP_063209_1800)



# Cone close to Noctis Fossae

DTEED\_064066\_1800\_037508\_1800\_A01



0.1°S 261.1°E

DTM Producer: UA | Kris Akers

Stereo Pair:

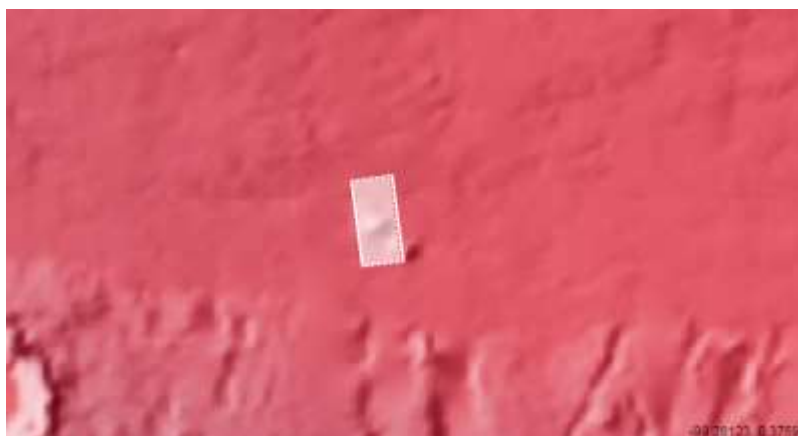
ESP\_064066\_1800

ESP\_037508\_1800

For more details about this DTM, visit:

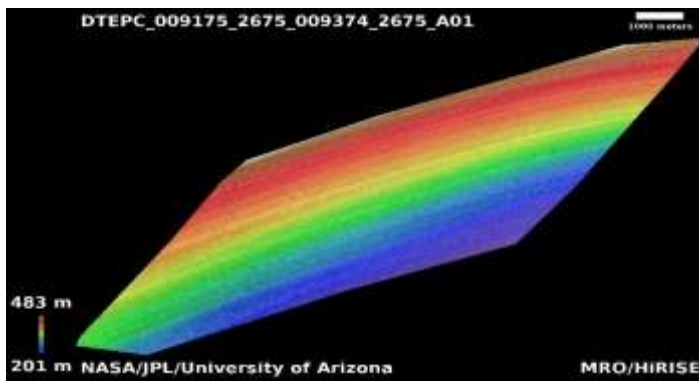
[https://www.uahirise.org/dtm/dtm.php?](https://www.uahirise.org/dtm/dtm.php?ID=ESP_064066_1800)

[ID=ESP\\_064066\\_1800](https://www.uahirise.org/dtm/dtm.php?ID=ESP_064066_1800)



# High-latitude exposure of north polar layered

DTEPC\_009175\_2675\_009374\_2675\_A01



87.6°N 72.5°E

DTM Producer: UA | Shavonne Morin

Stereo Pair:

PSP\_009175\_2675

PSP\_009374\_2675

For more details about this DTM, visit:

[https://www.uahirise.org/dtm/dtm.php?](https://www.uahirise.org/dtm/dtm.php?ID=PSP_009175_2675)

[ID=PSP\\_009175\\_2675](https://www.uahirise.org/dtm/dtm.php?ID=PSP_009175_2675)

