



**HIGH RESOLUTION IMAGING  
SCIENCE EXPERIMENT**



**DTM PDS RELEASES**

*February 2019*

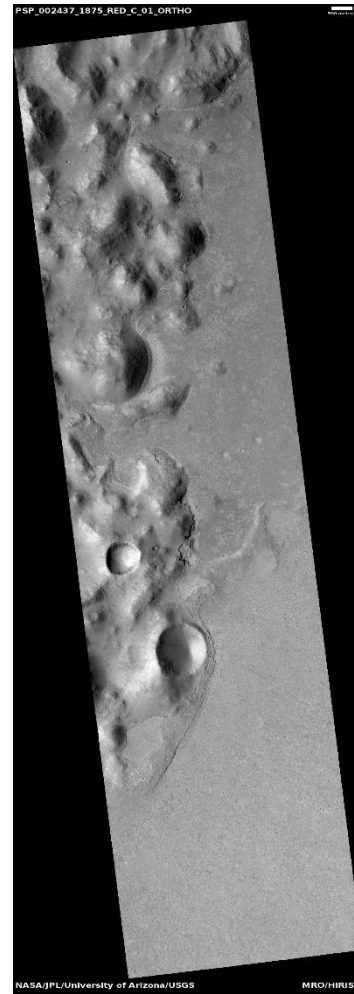
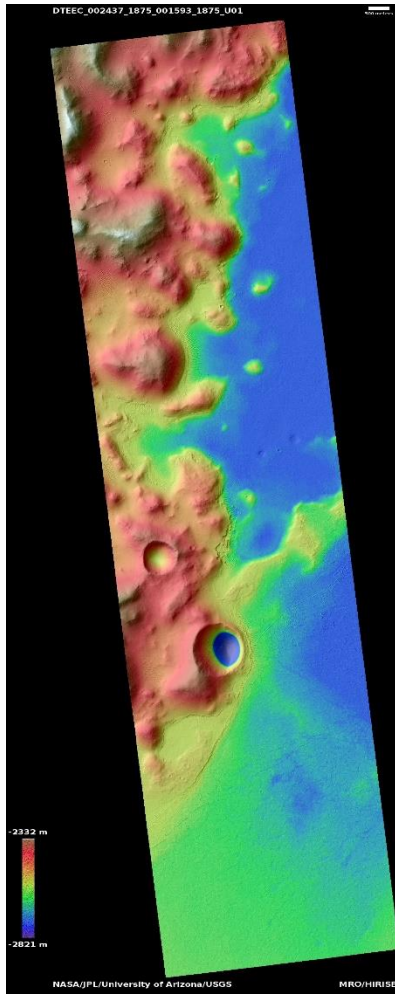
Designed by Erin Clark and Nicholas Porter | Edited by Nicholas Porter | UA

DTMs Included this Month

<b>LANDSLIDES ALONG SHORELINE IN ELYSIUM PLANITIA.....</b>	<b>1</b>
<b>POSSIBLE MSL ROVER LANDING SITE IN NILI FOSSAE.....</b>	<b>2</b>
<b>LANDFORMS IN ATHABASCA VALLES .....</b>	<b>3</b>
<b>CURVED AND BRANCHING RIDGES .....</b>	<b>4</b>
<b>FISSURE EAST OF OLYMPUS MONS .....</b>	<b>5</b>

# Landslides along shoreline in Elysium Planitia

DTEEC\_002437\_1875\_001593\_1875\_U01



5°N 151.9°E

DTM Producer: USGS

Stereo Pair:

PSP\_002437\_1875

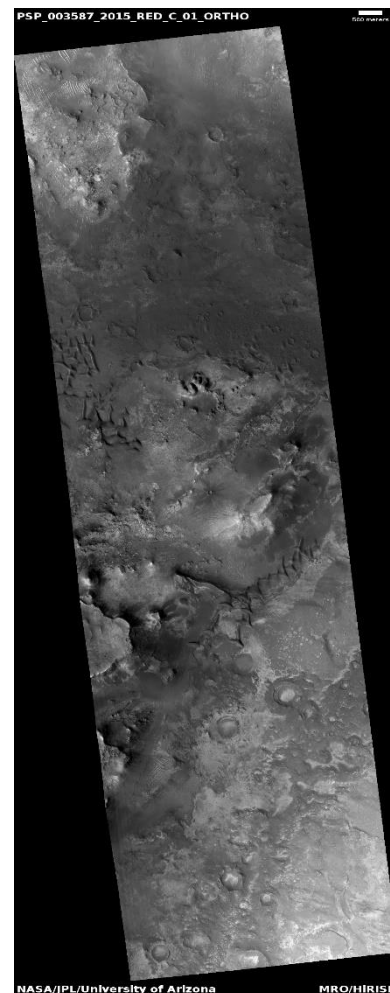
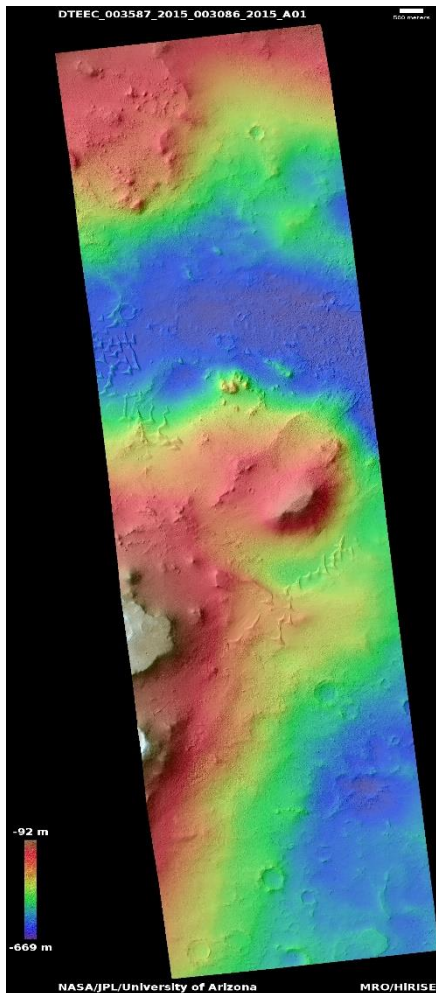
PSP\_001593\_1875

For more details about this DTM, visit:  
[https://www.uahirise.org/dtm/dtm.php?ID=PSP\\_002437\\_1875](https://www.uahirise.org/dtm/dtm.php?ID=PSP_002437_1875)



# Possible MSL rover landing site in Nili Fossae

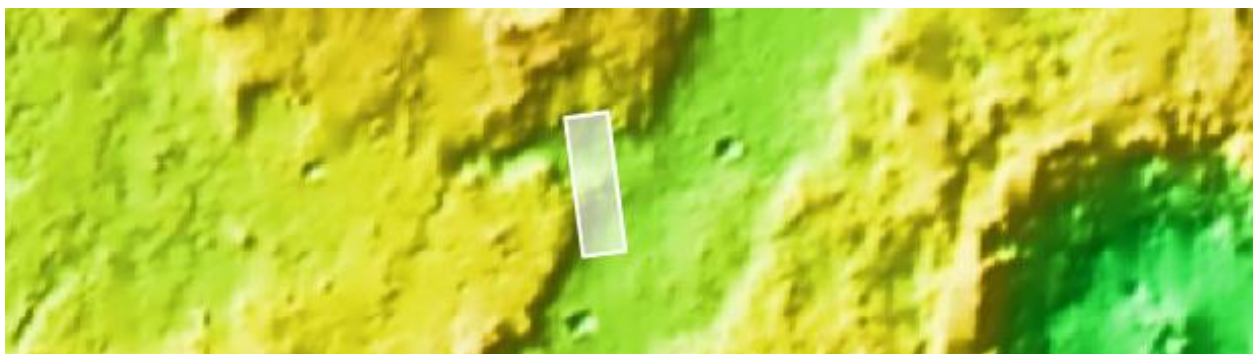
DTEEC\_003587\_2015\_003086\_2015\_A01



20°N 74°E  
DTM Producer: UA – Michael Berube  
Stereo Pair:  
PSP\_003587\_2015  
PSP\_003086\_2015

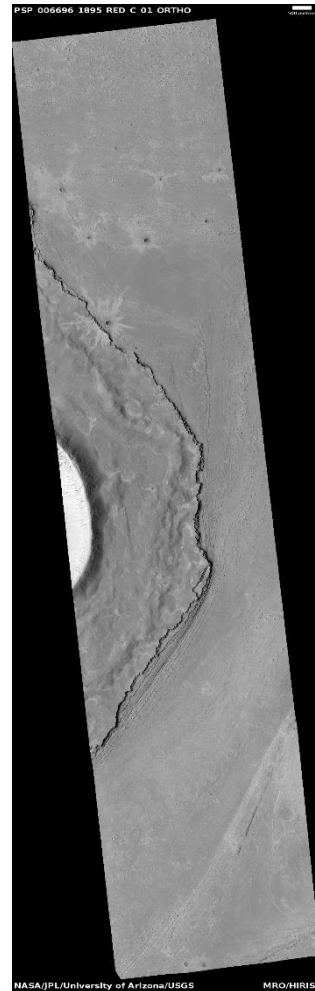
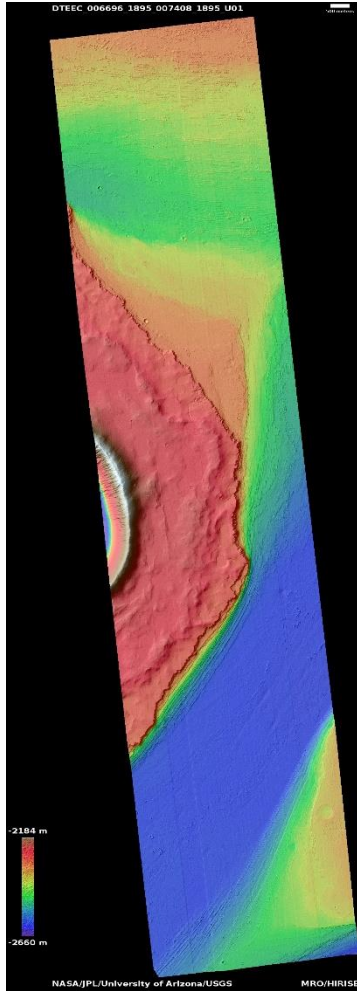
Additional Orthos:  
ESP\_045137\_2015  
ESP\_037739\_2015  
ESP\_047049\_2015

For more details about this DTM, visit:  
[https://www.uahirise.org/dtm/dtm.php?ID=PSP\\_003587\\_2015](https://www.uahirise.org/dtm/dtm.php?ID=PSP_003587_2015)



# Landforms in Athabasca Valles

DTEEC\_006696\_1895\_007408\_1895\_U01



5°N 155.9°E

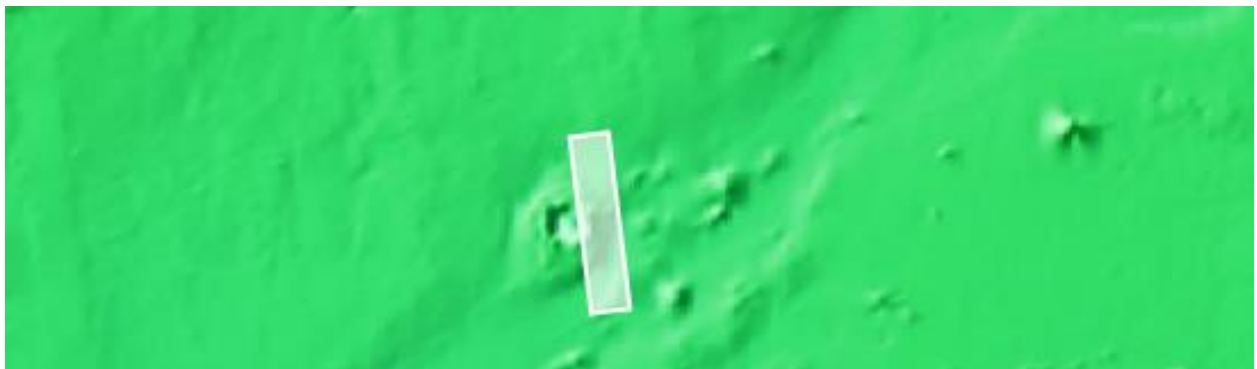
DTM Producer: USGS

Stereo Pair:

PSP\_006696\_1895

PSP\_007408\_1895

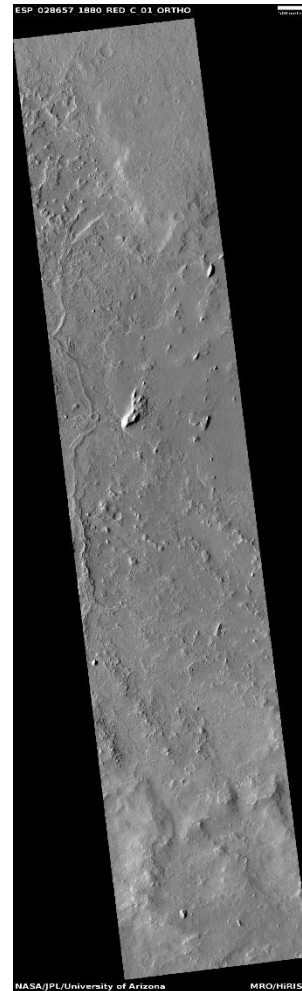
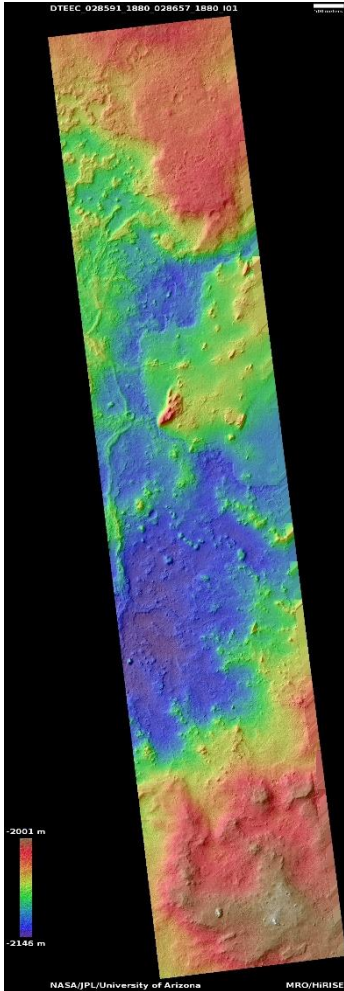
For more details about this DTM, visit:  
[https://www.uahirise.org/dtm/dtm.php?ID=PSP\\_006696\\_1895](https://www.uahirise.org/dtm/dtm.php?ID=PSP_006696_1895)





# Curved and Branching Ridges

DTEEC\_028591\_1880\_028657\_1880\_I01



5°N 349°E

DTM Producer: UCL – Peter Grindrod

Stereo Pair:

ESP\_028591\_1880

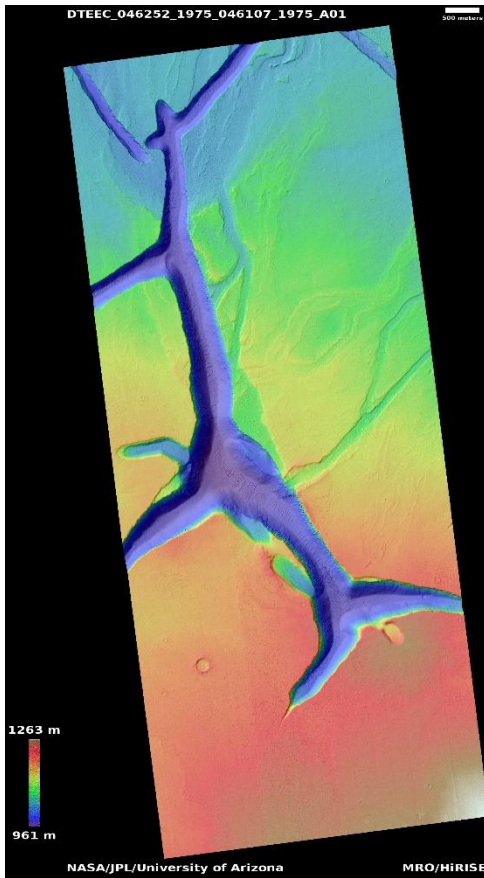
ESP\_028657\_1880

For more details about this DTM, visit:  
[https://www.uahirise.org/dtm/dtm.php?ID=ESP\\_028591\\_1880](https://www.uahirise.org/dtm/dtm.php?ID=ESP_028591_1880)



# Fissure east of Olympus Mons

DTEEC\_046252\_1975\_046107\_1975\_A01



15°N 233°E

DTM Producer: UA – Sarah Sutton

Stereo Pair:

ESP\_046252\_1975

ESP\_046107\_1975

For more details about this DTM, visit:

[https://www.uahirise.org/dtm/dtm.php?](https://www.uahirise.org/dtm/dtm.php?ID=ESP_046252_1975)

[ID=ESP\\_046252\\_1975](https://www.uahirise.org/dtm/dtm.php?ID=ESP_046252_1975)

