



**HIGH RESOLUTION IMAGING
SCIENCE EXPERIMENT**



DTM PDS RELEASES

December 2022

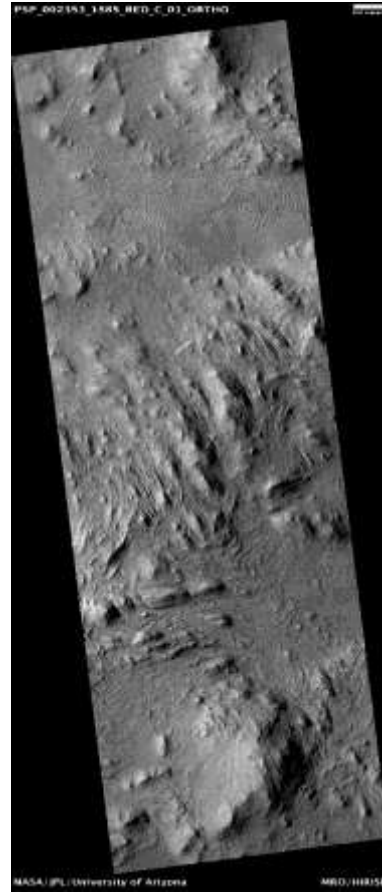
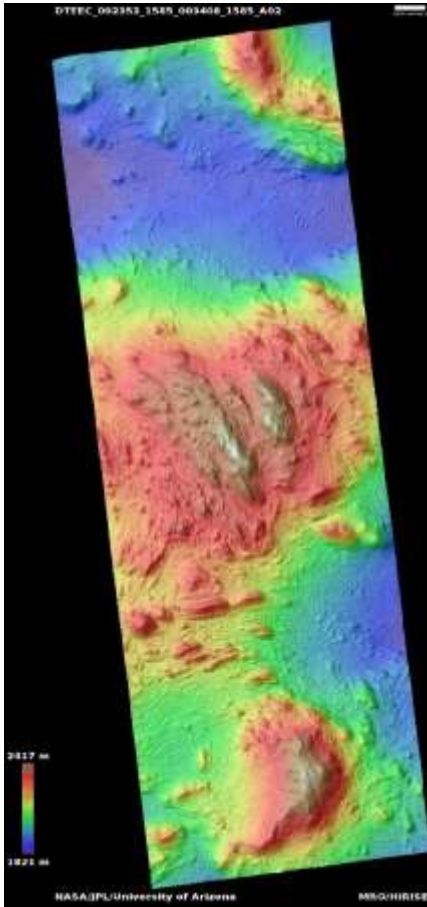
Edited by Kris Akers | UA

DTMs Included this Month

Central uplift of an impact crater.....	1
Tributary of Shalbatana Vallis as seen in MOC image R09-01983.....	2
Layered bedrock exposed in the central uplift of Martin Crater.....	3
Layered bedrock exposed in the central uplift of Martin Crater.....	4
Recent crater.....	5
Tilted strata in central structure of Martin Crater.....	6
Central uplift of an impact crater.....	7
Martin Crater central uplift.....	8

Central uplift of an impact crater

DTEEC_002353_1585_003408_1585_A02



21.4°S 290.7°E

DTM Producer: UA | Kris Akers

Stereo Pair:

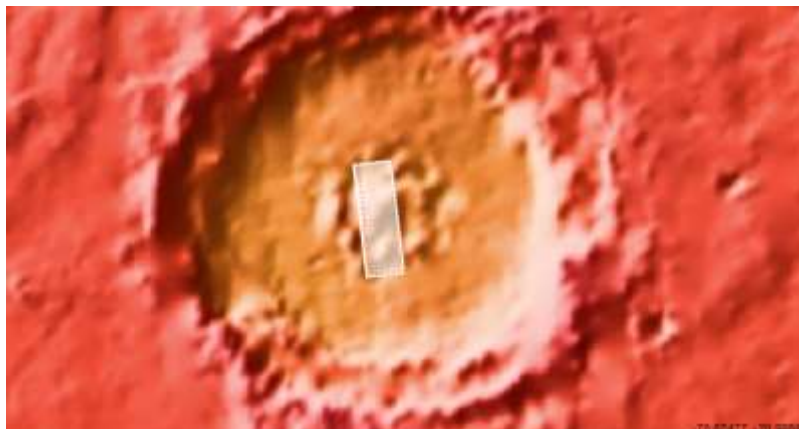
PSP_002353_1585

PSP_003408_1585

For more details about this DTM, visit:

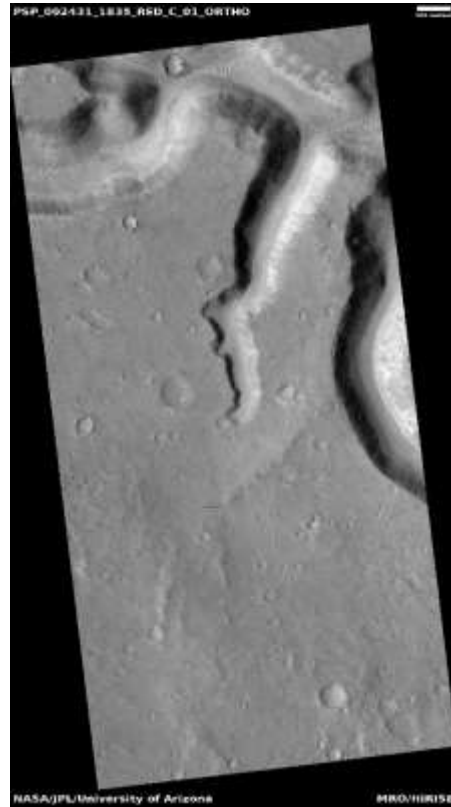
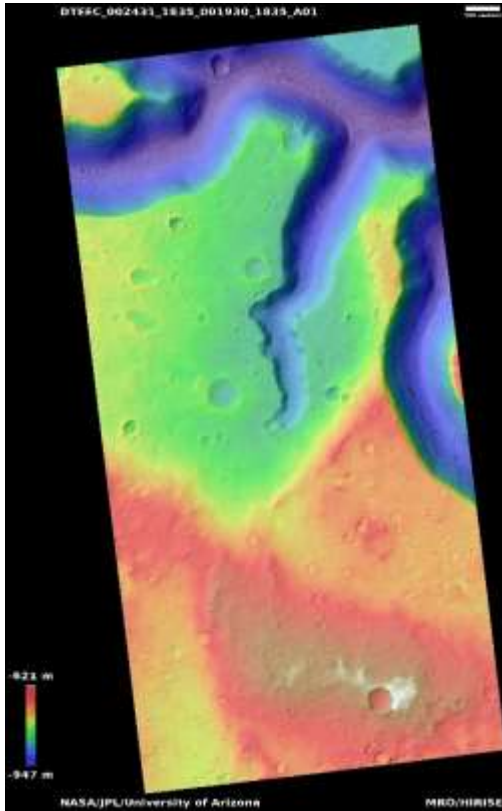
[https://www.uahirise.org/dtm/dtm.php?](https://www.uahirise.org/dtm/dtm.php?ID=PSP_002353_1585)

[ID=PSP_002353_1585](https://www.uahirise.org/dtm/dtm.php?ID=PSP_002353_1585)



Tributary of Shalbatana Vallis as seen in MOC image R09-01983

DTEEC_002431_1835_001930_1835_A01



3.4°N 316.1°E

DTM Producer: UA | Maximus X Cabrera

Stereo Pair:

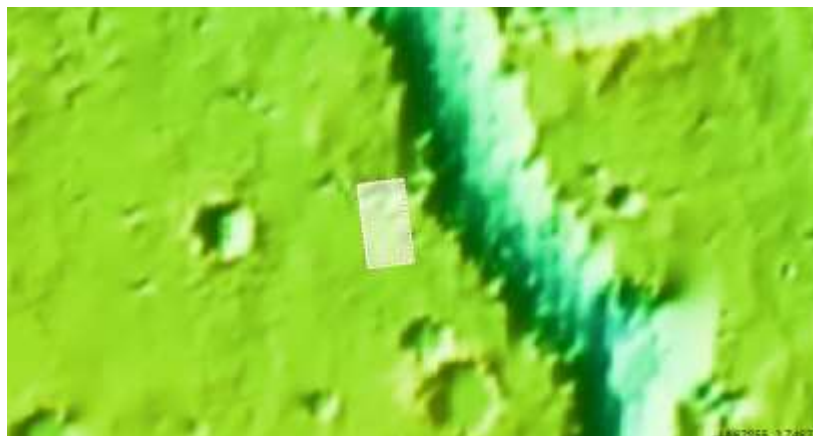
PSP_002431_1835

PSP_001930_1835

For more details about this DTM, visit:

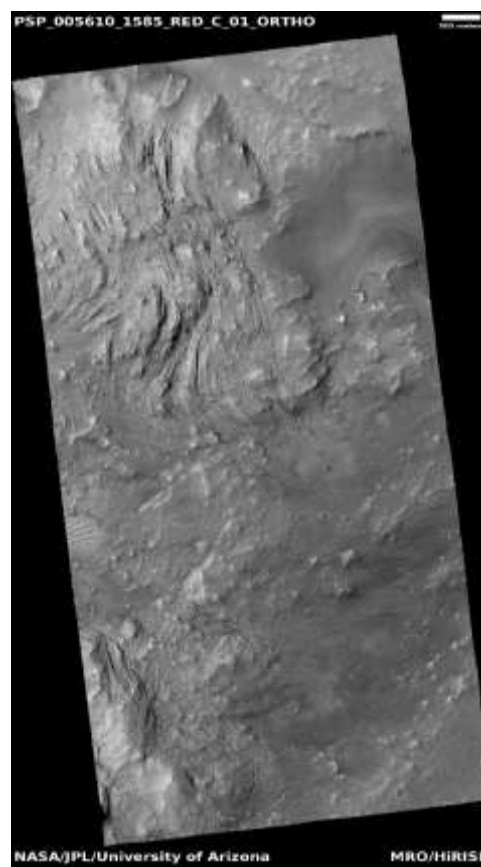
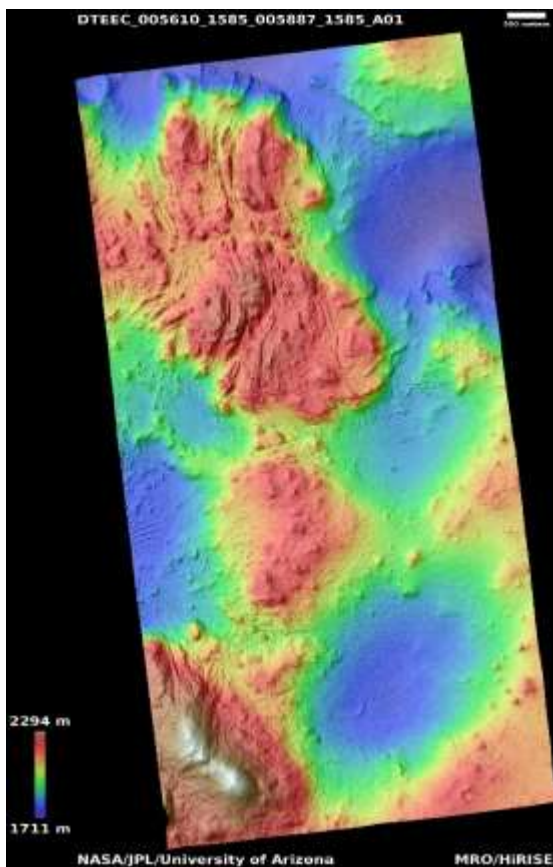
[https://www.uahirise.org/dtm/dtm.php?](https://www.uahirise.org/dtm/dtm.php?ID=PSP_002431_1835)

[ID=PSP_002431_1835](https://www.uahirise.org/dtm/dtm.php?ID=PSP_002431_1835)



Layered bedrock exposed in the central uplift of Martin Crater

DTEEC_005610_1585_005887_1585_A01



21.4°S 290.8°E

DTM Producer: UA | Kris Akers

Stereo Pair:

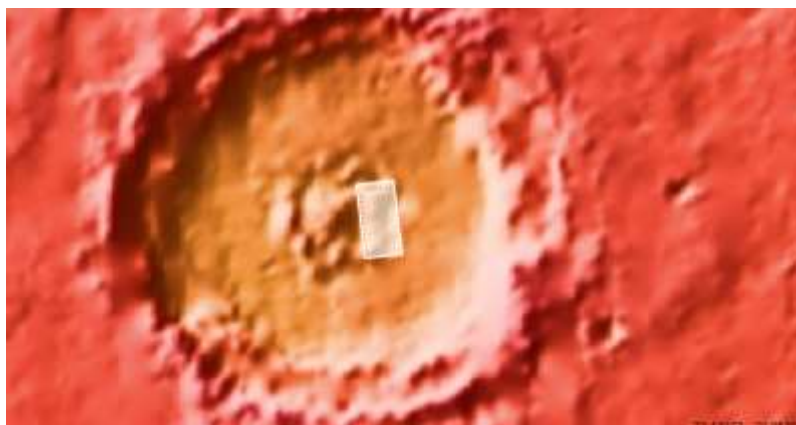
PSP_005610_1585

PSP_005887_1585

For more details about this DTM, visit:

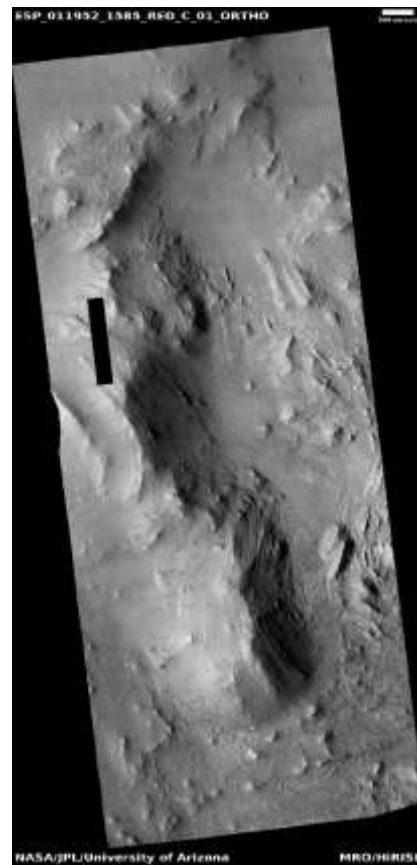
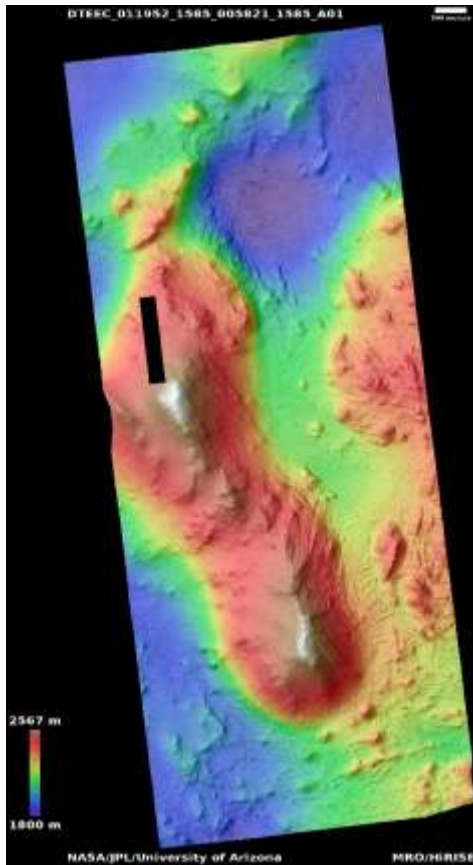
[https://www.uahirise.org/dtm/dtm.php?](https://www.uahirise.org/dtm/dtm.php?ID=PSP_005610_1585)

[ID=PSP_005610_1585](https://www.uahirise.org/dtm/dtm.php?ID=PSP_005610_1585)



Layered bedrock exposed in the central uplift of Martin Crater

DTEEC_011952_1585_005821_1585_A01



21.4°S 290.6°E

DTM Producer: UA | Kris Akers

Stereo Pair:

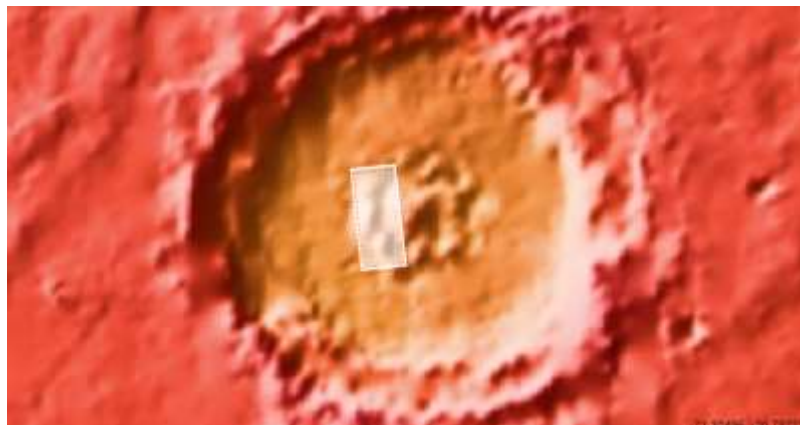
ESP_011952_1585

PSP_005821_1585

For more details about this DTM, visit:

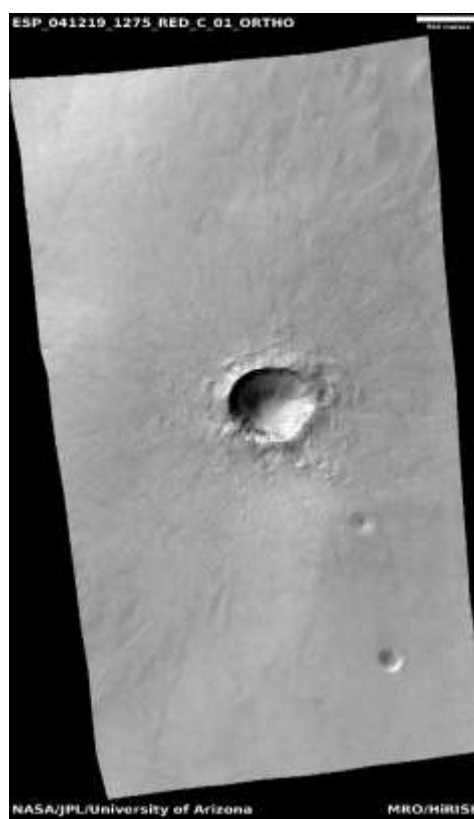
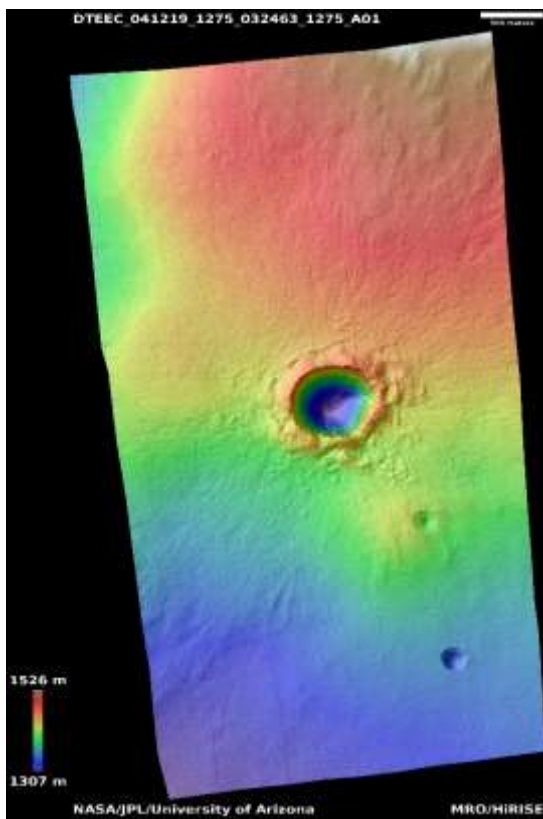
[https://www.uahirise.org/dtm/dtm.php?](https://www.uahirise.org/dtm/dtm.php?ID=ESP_011952_1585)

[ID=ESP_011952_1585](https://www.uahirise.org/dtm/dtm.php?ID=ESP_011952_1585)



Recent crater

DTEEC_041219_1275_032463_1275_A01



52.2°S 124.9°E

DTM Producer: UA | Branden M Gosse

Stereo Pair:

ESP_041219_1275

ESP_032463_1275

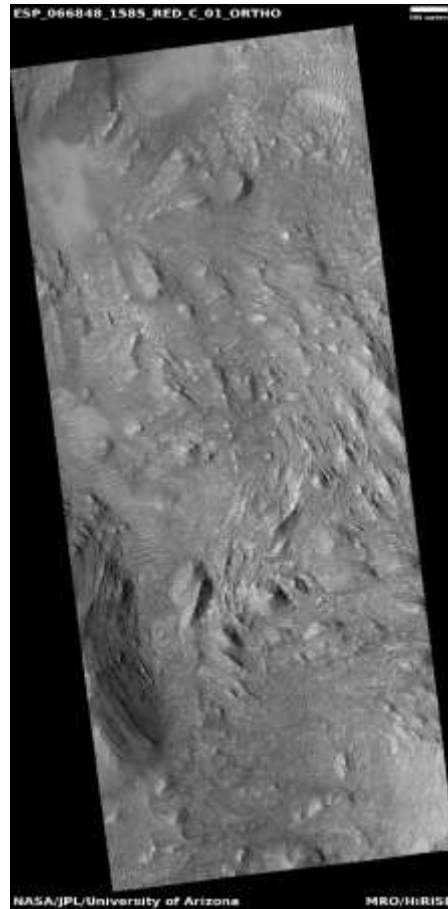
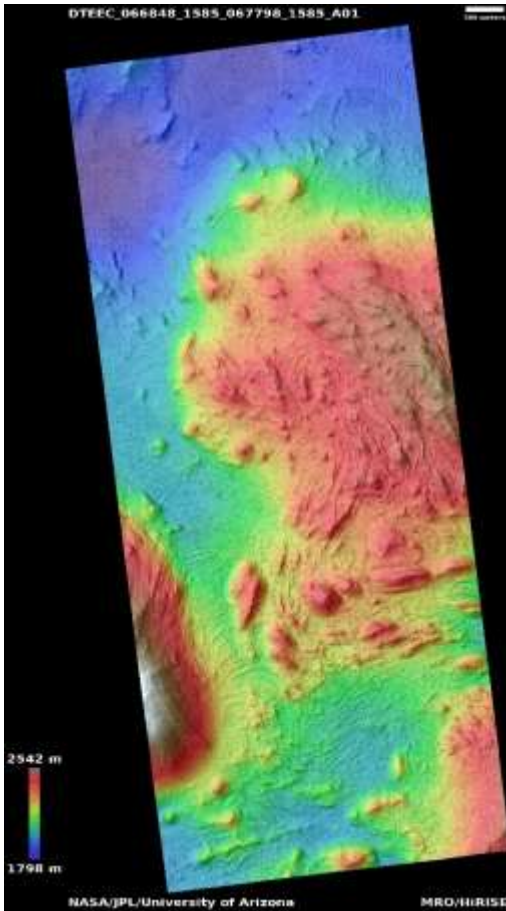
For more details about this DTM, visit:

https://www.uahirise.org/dtm/dtm.php?ID=ESP_041219_1275



Tilted strata in central structure of Martin Crater

DTEEC_066848_1585_067798_1585_A01



21.4°S 290.7°E

DTM Producer: UA | Kris Akers

Stereo Pair:

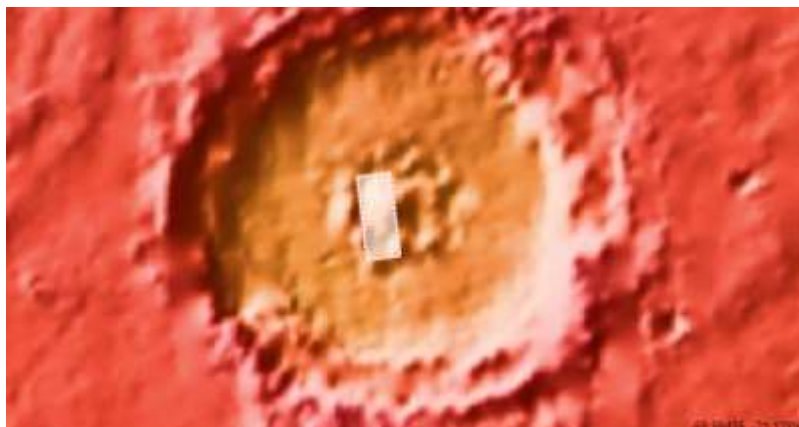
ESP_066848_1585

ESP_067798_1585

For more details about this DTM, visit:

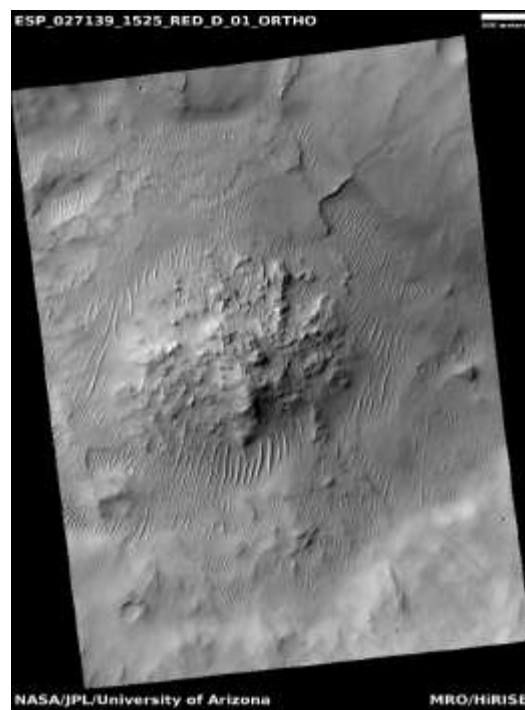
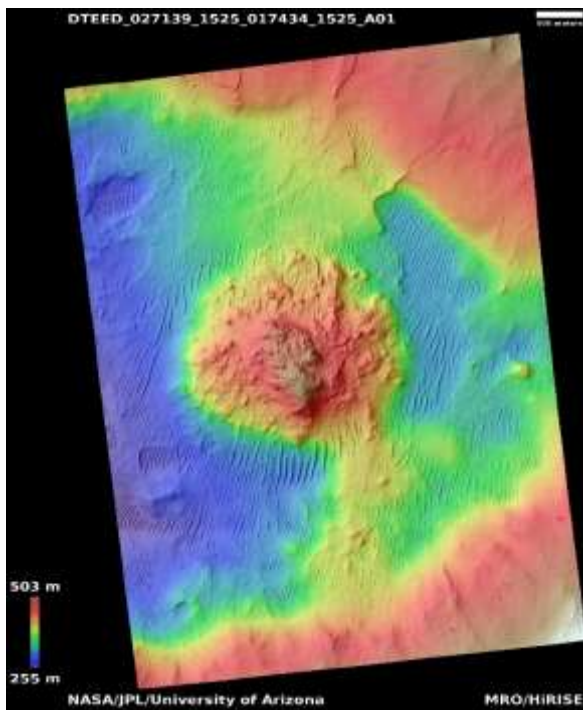
[https://www.uahirise.org/dtm/dtm.php?](https://www.uahirise.org/dtm/dtm.php?ID=ESP_066848_1585)

[ID=ESP_066848_1585](https://www.uahirise.org/dtm/dtm.php?ID=ESP_066848_1585)



Central uplift of an impact crater

DTEED_027139_1525_017434_1525_A01



27.0°S 29.6°E

DTM Producer: UA | Kris Akers

Stereo Pair:

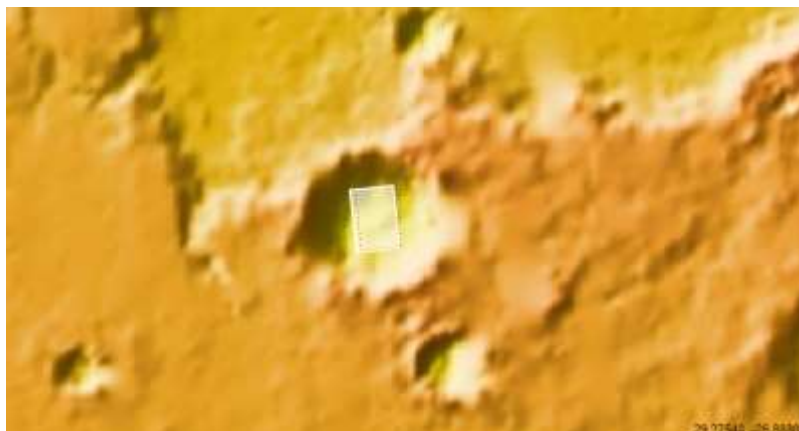
ESP_027139_1525

ESP_017434_1525

For more details about this DTM, visit:

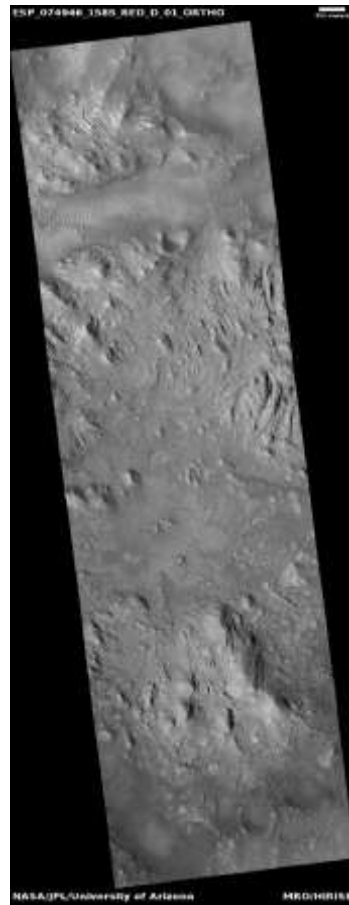
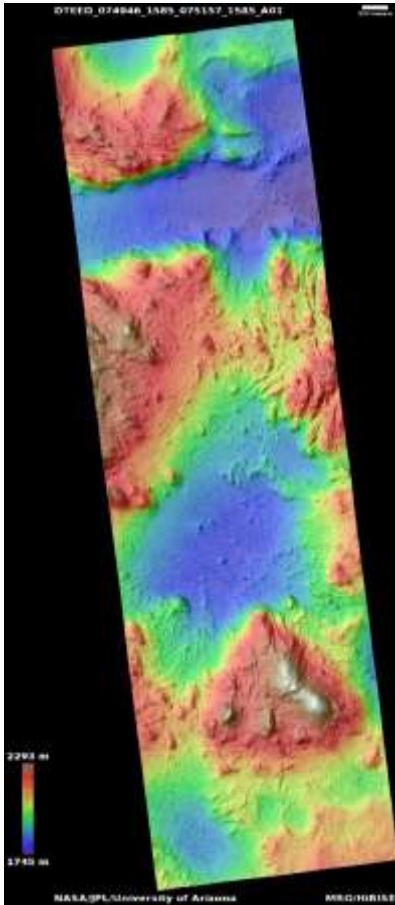
<https://www.uahirise.org/dtm/dtm.php?>

[ID=ESP_027139_1525](https://www.uahirise.org/dtm/dtm.php?ID=ESP_027139_1525)



Martin Crater central uplift

DTEED_074946_1585_075157_1585_A01



21.4°S 290.8°E

DTM Producer: UA | Kris Akers

Stereo Pair:

ESP_074946_1585

ESP_075157_1585

For more details about this DTM, visit:

[https://www.uahirise.org/dtm/dtm.php?](https://www.uahirise.org/dtm/dtm.php?ID=ESP_074946_1585)

[ID=ESP_074946_1585](https://www.uahirise.org/dtm/dtm.php?ID=ESP_074946_1585)

