



**HIGH RESOLUTION IMAGING
SCIENCE EXPERIMENT**



DTM PDS RELEASES

December 2019

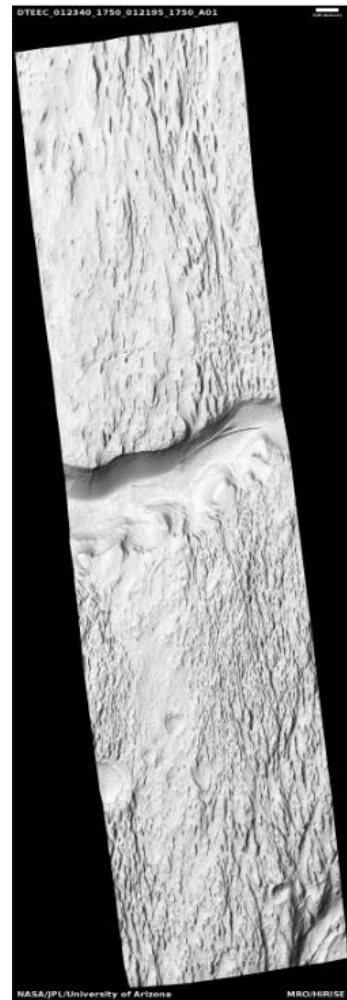
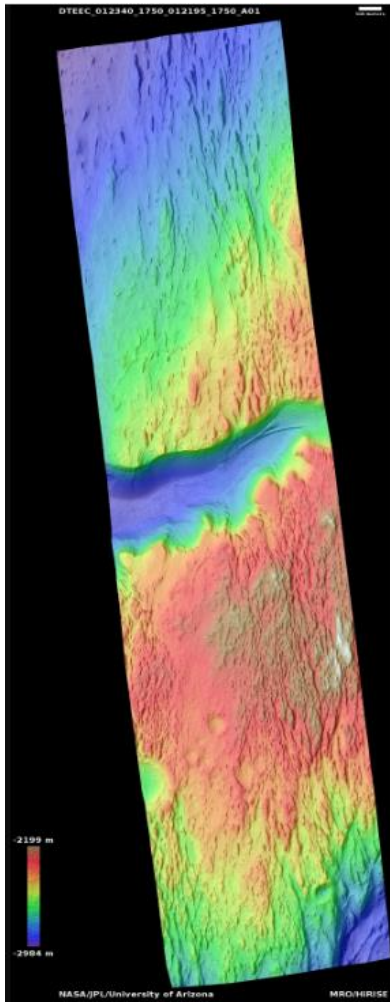
Edited by Daniel Robinson | UA

DTMs Included this Month

Grand Canyon of Gale Crater.....	1
Central Resen Crater.....	2
Layered Deposits Within Ladon Valles.....	3
Stratigraphy Southeast of Crommelin Crater.....	4
Exposure of South Polar Layered Deposits.....	5
Mid-Latitude Apron Interior by Younger Gully.....	6
Lobate Flow Features in Deuteronilus Mensae Alcoves.....	7
Ultimum Chasma South Polar Layers.....	8
Surface Features in Deuteronilus Mensae.....	9
South Polar Layered Deposits.....	10
Basal Exposure of South Polar Deposits.....	11
Light-Toned Outcrops North of Sigli Crater.....	12

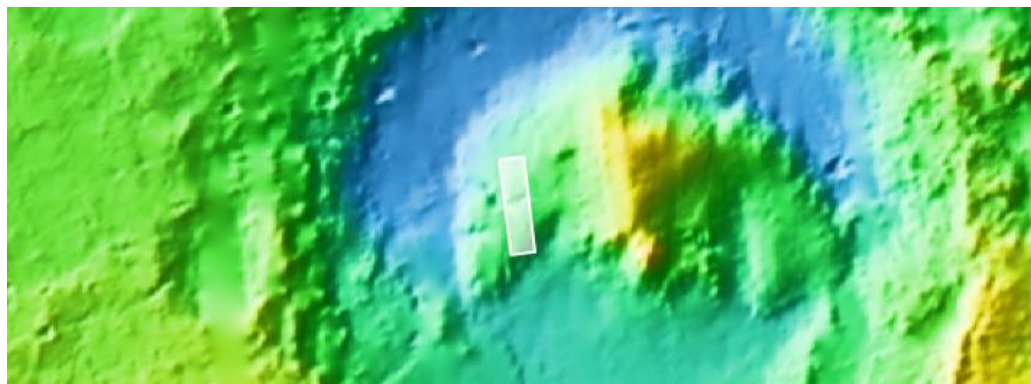
Grand Canyon of Gale Crater

DTEEC_012340_1750_012195_1750_A01



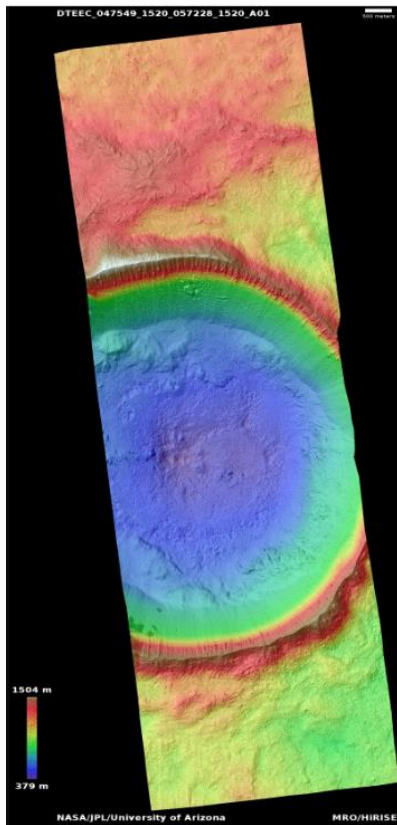
5.2°S 137.3°E
DTM Producer: UA | Shavonne Morin
Stereo Pair:
ESP_012340_1750
ESP_012195_1750

For more details about this DTM, visit:
https://www.uahirise.org/dtm/dtm.php?ID=ESP_012340_1750



Central Resen Crater

DTEEC_047549_1520_057228_1520_A01



27.9°S 108.8°E

DTM Producer: UA | Christine Akers

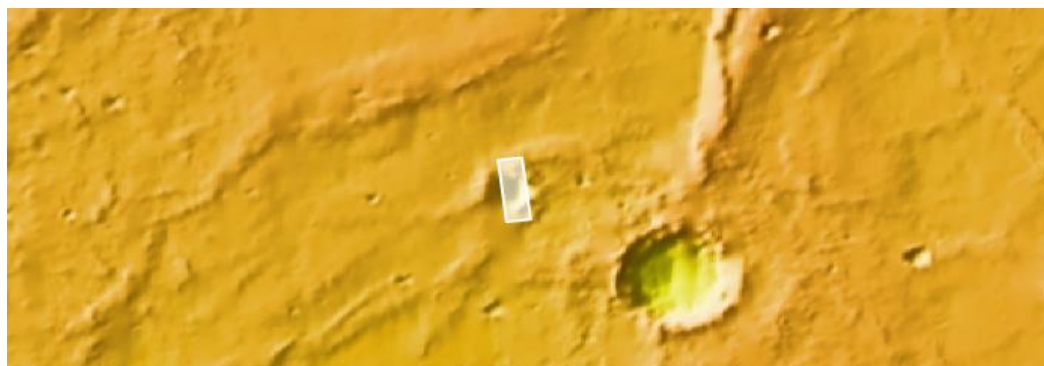
Stereo Pair:

ESP_047549_1520

ESP_057228_1520

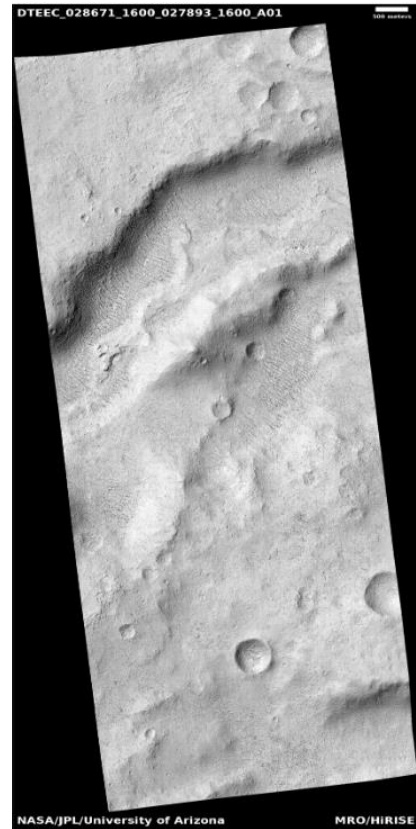
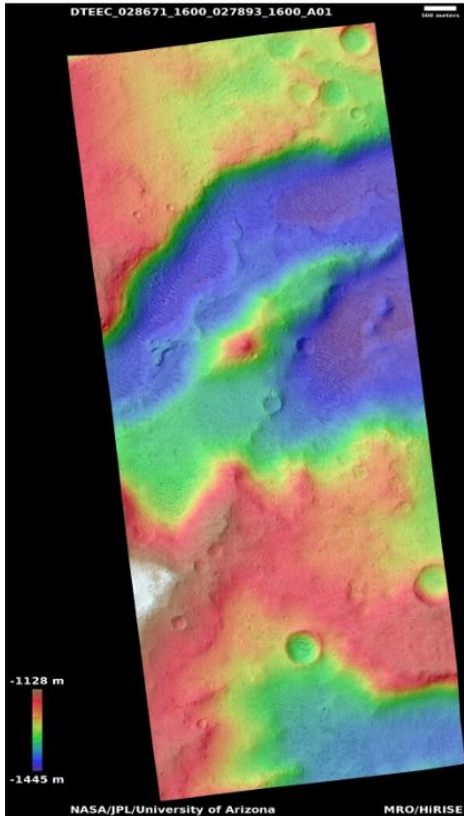
For more details about this DTM, visit:

https://www.uahirise.org/dtm/dtm.php?ID=ESP_047549_1520



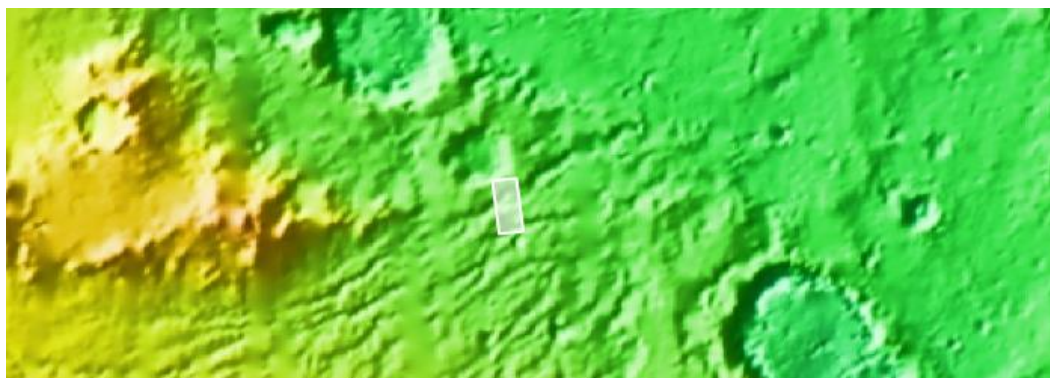
Layered Deposits Within Ladon Valles

DTEEC_028671_1600_027893_1600_A01



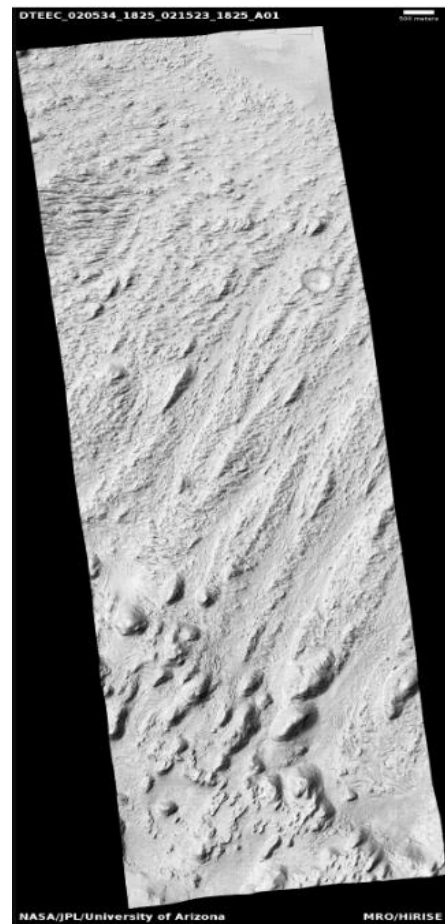
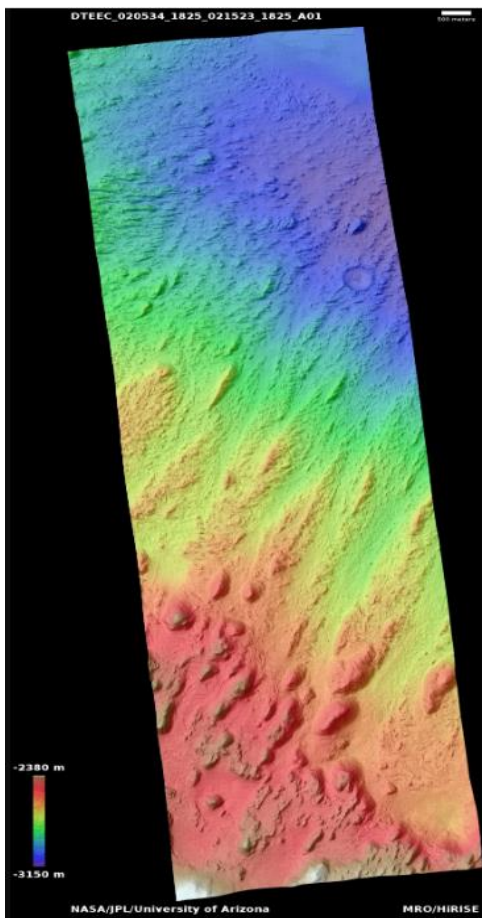
19.8°S 328.1°E
DTM Producer: UA | Riley McClurkin
Stereo Pair:
ESP_028671_1600
ESP_027893_1600

For more details about this DTM, visit:
https://www.uahirise.org/dtm/dtm.php?ID=ESP_028671_1600



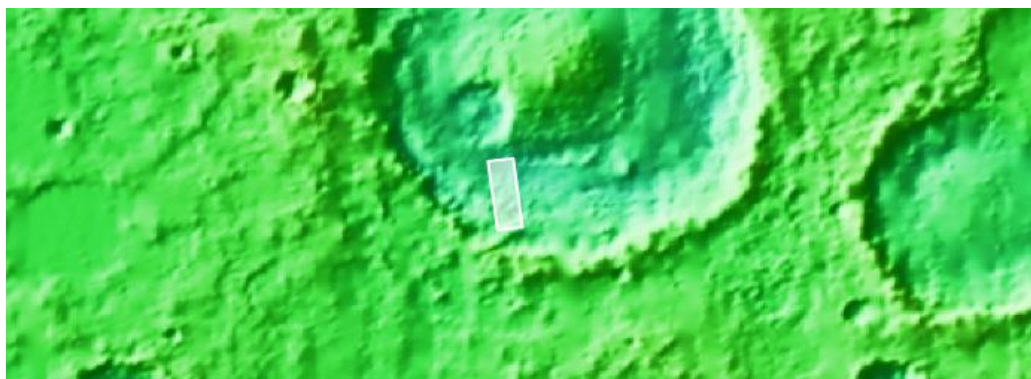
Stratigraphy Southeast of Crommelin Crater

DTEEC_020534_1825_021523_1825_A01



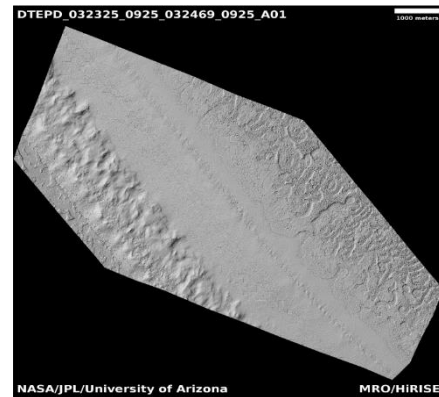
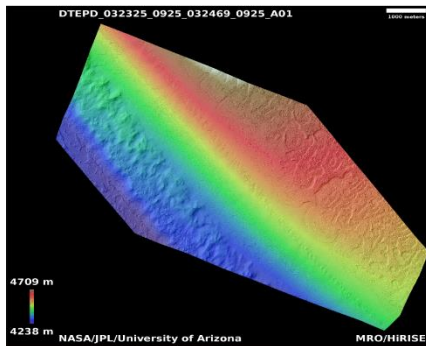
2.2°N 350.4°E
DTM Producer: UA | Daniel Robinson
Stereo Pair:
ESP_020534_1825
ESP_021523_1825

For more details about this DTM, visit:
https://www.uahirise.org/dtm/dtm.php?ID=ESP_020534_1825



Exposure of South Polar Layered Deposits

DTEPD_032325_0925_032469_0925_A01



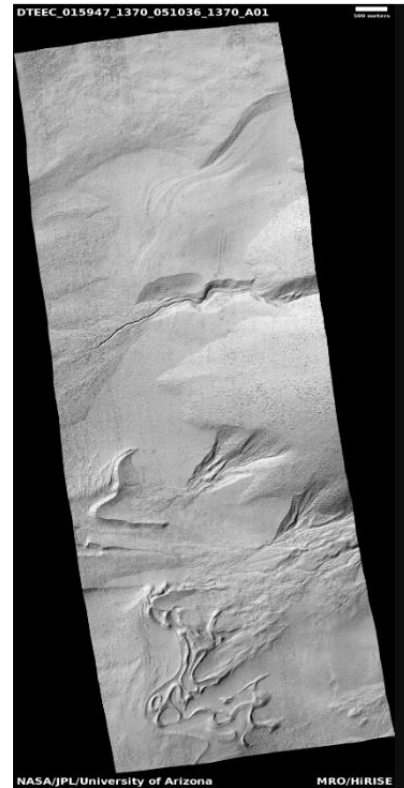
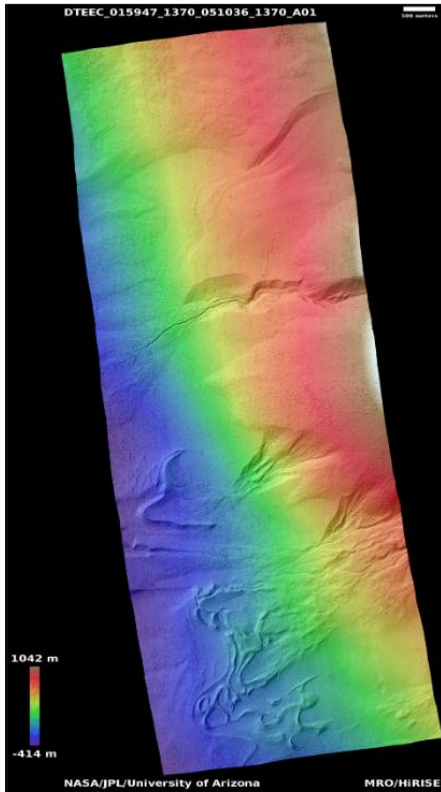
87.3°S 342.3°E
DTM Producer: UA | Christine Akers
Stereo Pair:
ESP_032325_0925
ESP_032469_0925

For more details about this DTM, visit:
https://www.uahirise.org/dtm/dtm.php?ID=ESP_032325_0925



Mid-Latitude Apron Interior by Younger Gully

DTEEC_015947_1370_051036_1370_A01



42.5°S 308.7°E

DTM Producer: UA | Daniel Robinson

Stereo Pair:

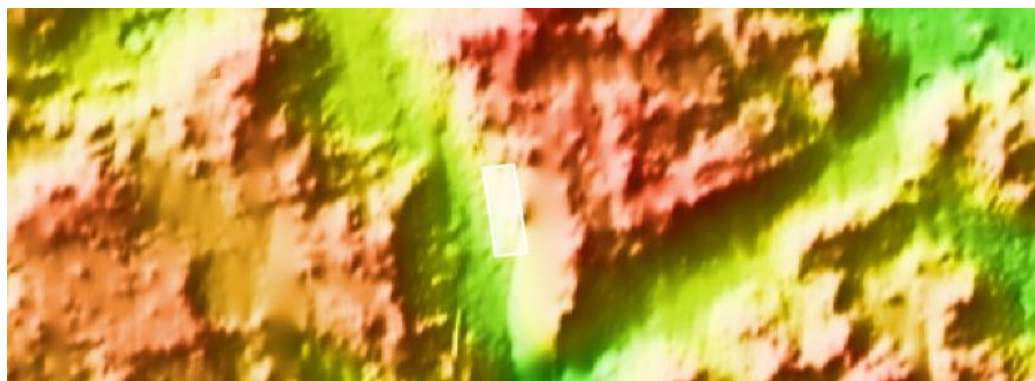
ESP_015947_1370

ESP_051036_1370

For more details about this DTM, visit:

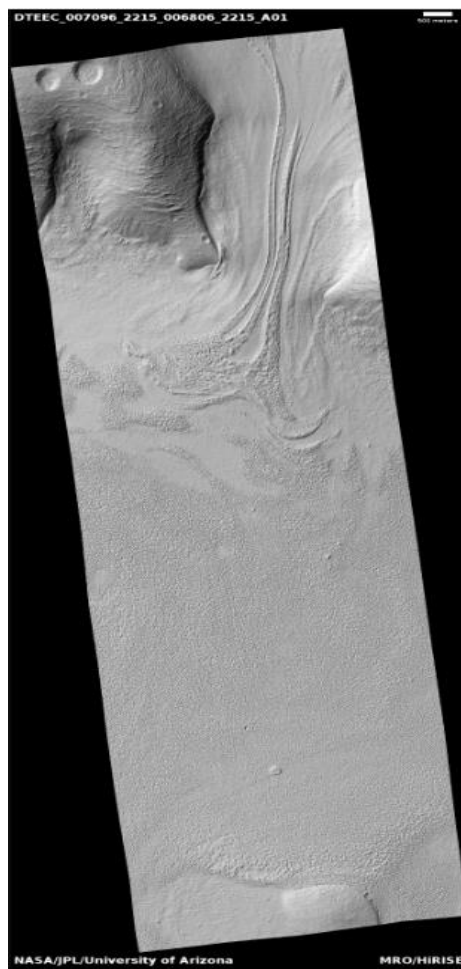
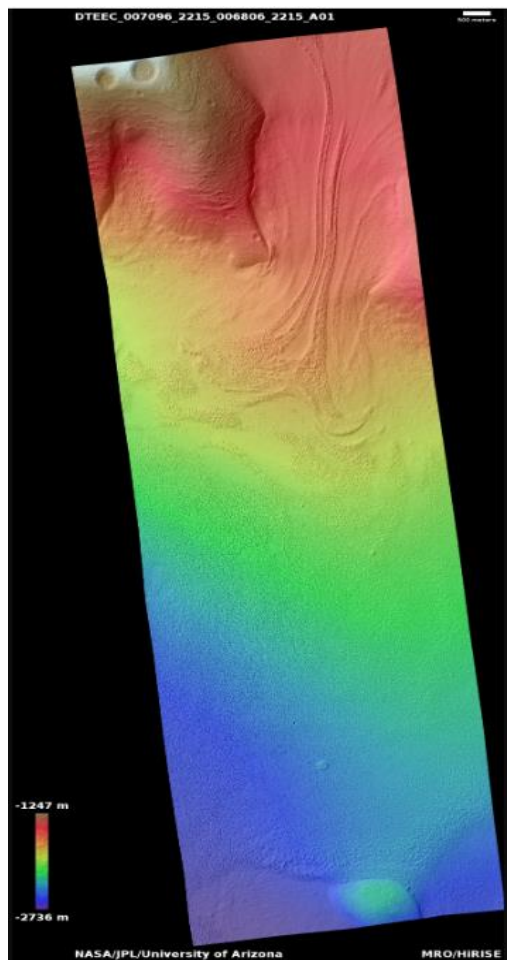
[https://www.uahirise.org/dtm/dtm.php?](https://www.uahirise.org/dtm/dtm.php?ID=ESP_015947_1370)

[ID=ESP_015947_1370](https://www.uahirise.org/dtm/dtm.php?ID=ESP_015947_1370)



Lobate Flow Features in Deuteronilus Mensae Alcoves

DTEEC_007096_2215_006806_2215_A01



41.2°N 29.5°E

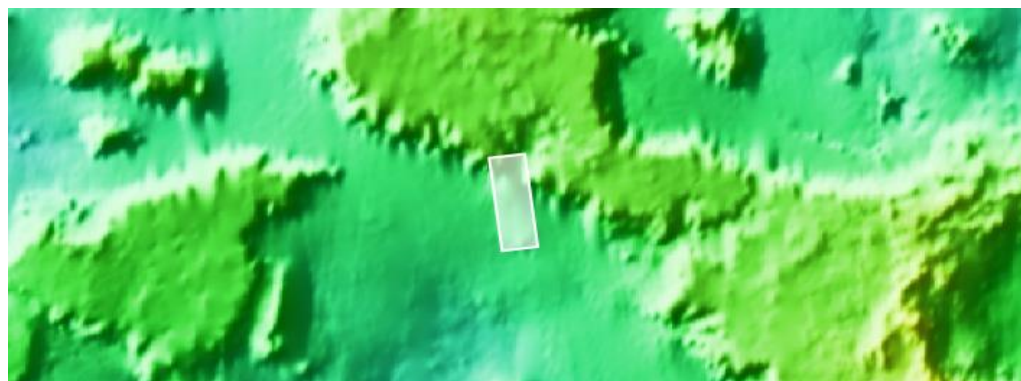
DTM Producer: UA | Riley McClurkin

Stereo Pair:

PSP_007096_2215

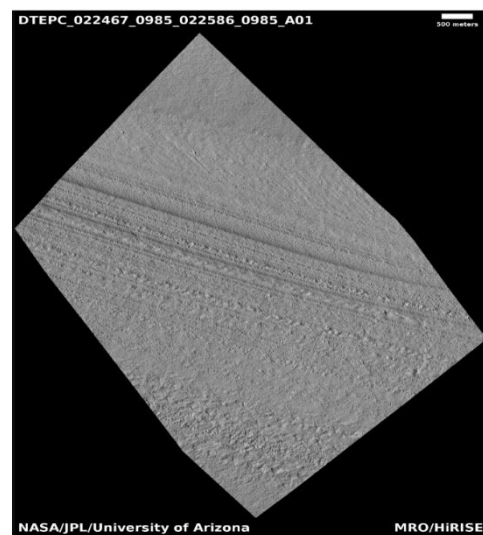
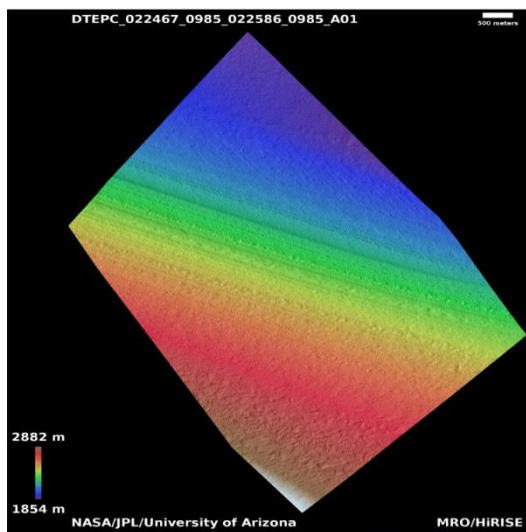
PSP_006806_2215

For more details about this DTM, visit:
[https://www.uahirise.org/dtm/dtm.php?
ID=PSP_007096_2215](https://www.uahirise.org/dtm/dtm.php?ID=PSP_007096_2215)



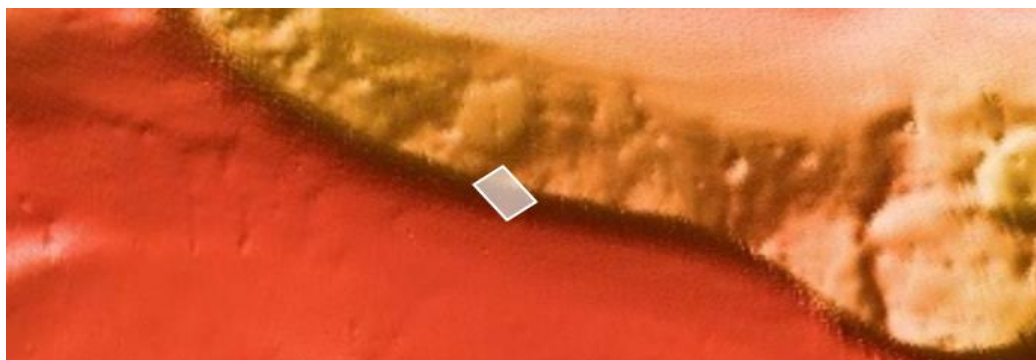
Ultimum Chasma South Polar Layers

DTEPC_022467_0985_022586_0985_A01



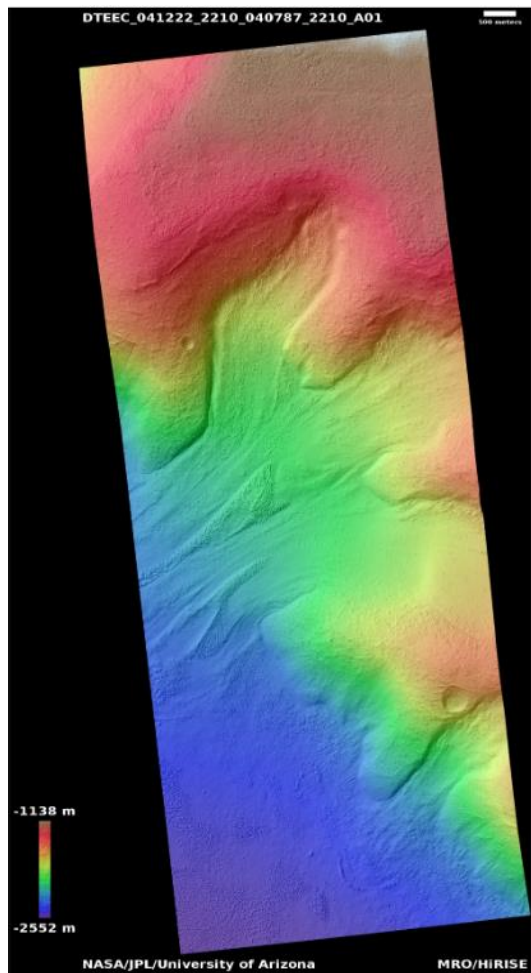
81.5°S 160.0°E
DTM Producer: UA | Riley McClurkin
Stereo Pair:
ESP_022467_0985
ESP_022586_0985

For more details about this DTM, visit:
https://www.uahirise.org/dtm/dtm.php?ID=ESP_022467_0985



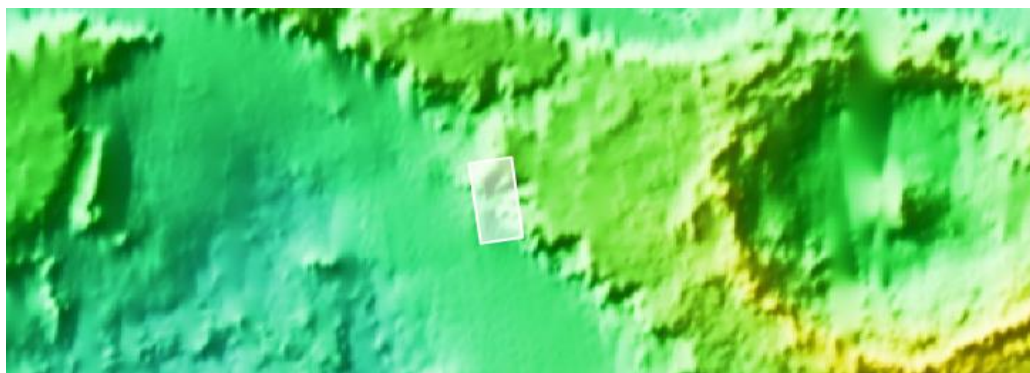
Surface Features in Deuteronilus Mensae

DTEEC_041222_2210_040787_2210_A01



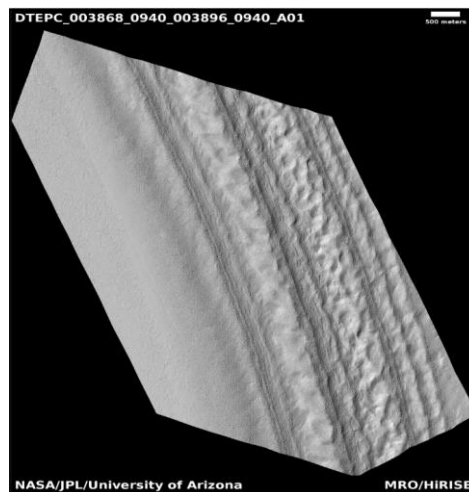
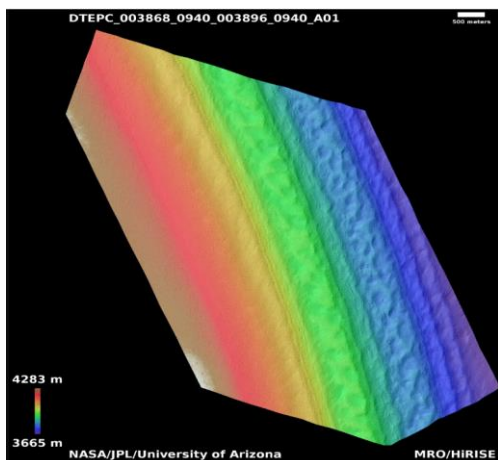
40.7°N 30.2°E
DTM Producer: UA | Nicholas Porter
Stereo Pair:
ESP_041222_2210
ESP_040787_2210

For more details about this DTM, visit:
https://www.uahirise.org/dtm/dtm.php?ID=ESP_041222_2210



South Polar Layered Deposits

DTEPC_003868_0940_003896_0940_A01



85.8°S 13.3°E

DTM Producer: UA | Christine Akers

Stereo Pair:

PSP_003868_0940

PSP_003896_0940

For more details about this DTM, visit:

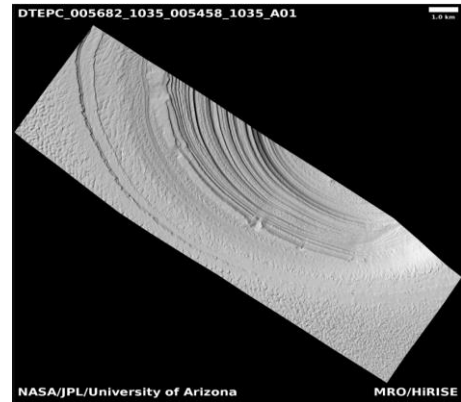
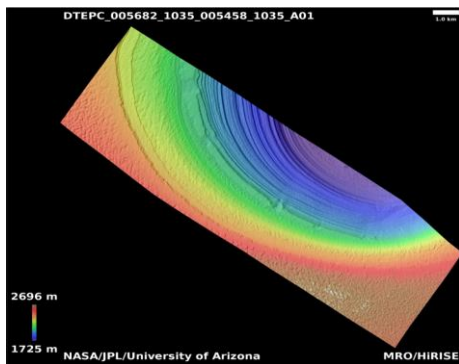
[https://www.uahirise.org/dtm/dtm.php?](https://www.uahirise.org/dtm/dtm.php?ID=PSP_003868_0940)

[ID=PSP_003868_0940](https://www.uahirise.org/dtm/dtm.php?ID=PSP_003868_0940)



Basal Exposure of South Polar Deposits

DTEPC_005682_1035_005458_1035_A01



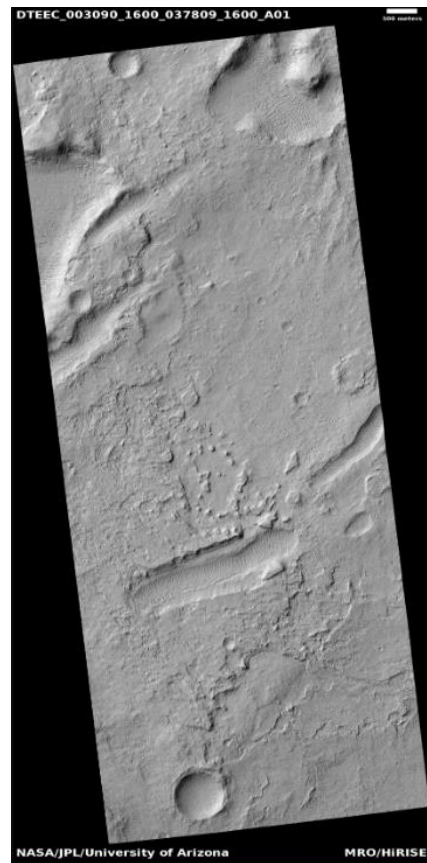
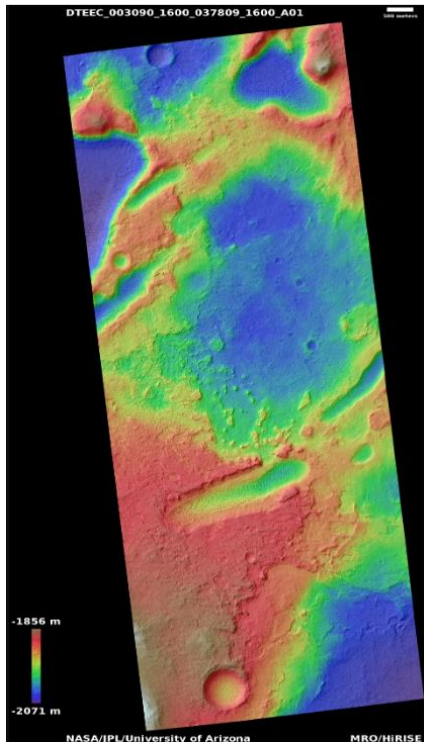
76.1°S 134.5°E
DTM Producer: UA | Riley McClurkin
Stereo Pair:
PSP_005682_1035
PSP_005458_1035

For more details about this DTM, visit:
https://www.uahirise.org/dtm/dtm.php?ID=PSP_005682_1035



Light-Toned Outcrops North of Sigli Crater

DTEEC_003090_1600_037809_1600_A01



19.7°S 329.3°E
DTM Producer: UA | Riley McClurkin
Stereo Pair:
PSP_003090_1600
ESP_037809_1600

For more details about this DTM, visit:
https://www.uahirise.org/dtm/dtm.php?ID=PSP_003090_1600

