



HIGH RESOLUTION IMAGING SCIENCE EXPERIMENT



COLLEGE OF SCIENCE
**LUNAR & PLANETARY
LABORATORY**

DTM PDS RELEASES

August 2024

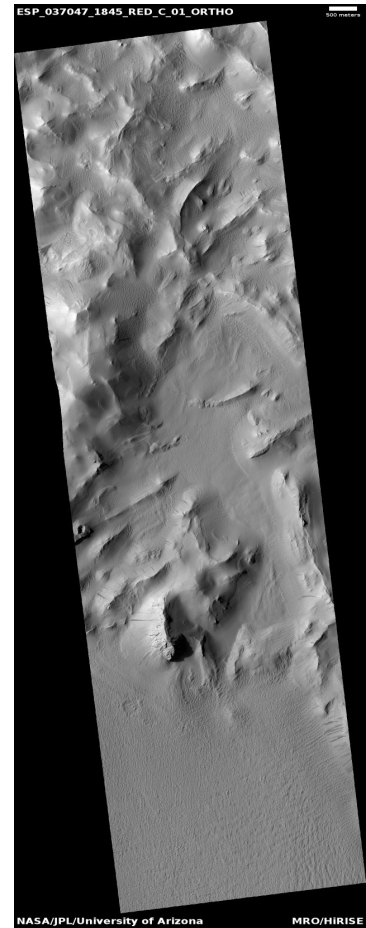
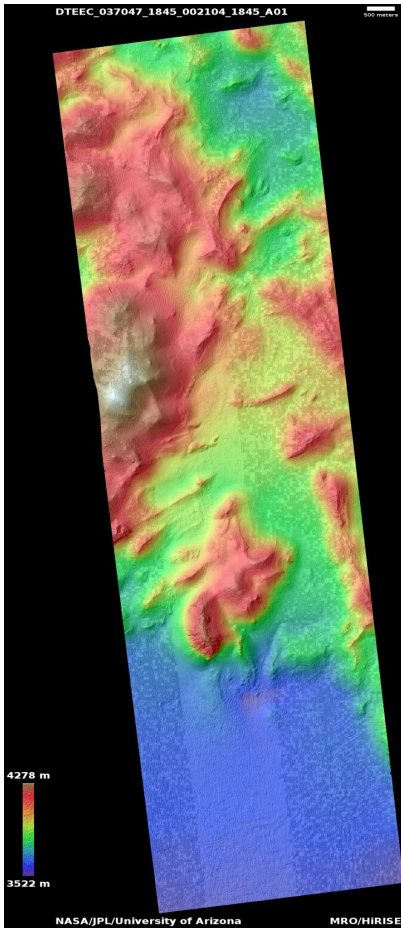
Edited by Kris Akers | UA

DTMs Included this Month

Slope streak monitoring	1
Rough terrain in Xanthe Terra	2
Northern plains domes	3
Northern plains crater with summer ice	4
Candidate landing site for 2020 mission in McLaughlin Crater	5
Very well-preserved high-latitude impact crater	6

Slope streak monitoring

DTEEC_037047_1845_002104_1845_A01



Latitude: 4.6 **Longitude:** 245.8

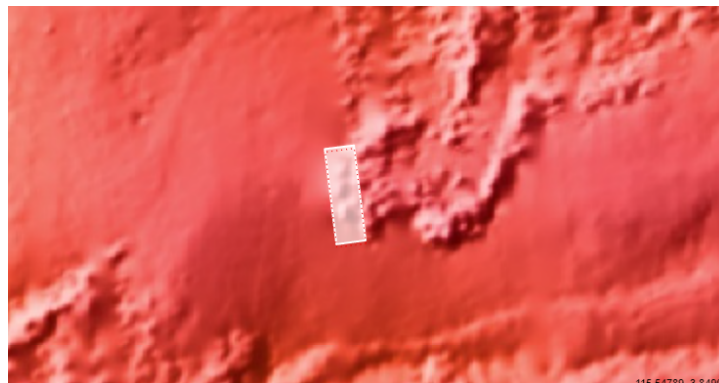
DTM Producer: UA | KRIS AMANDA AKERS

Stereo Pair:

ESP_037047_1845
PSP_002104_1845

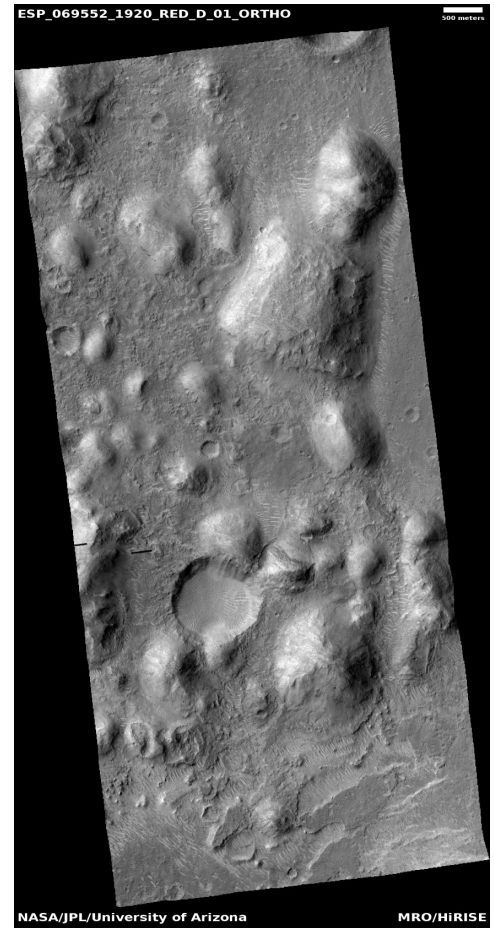
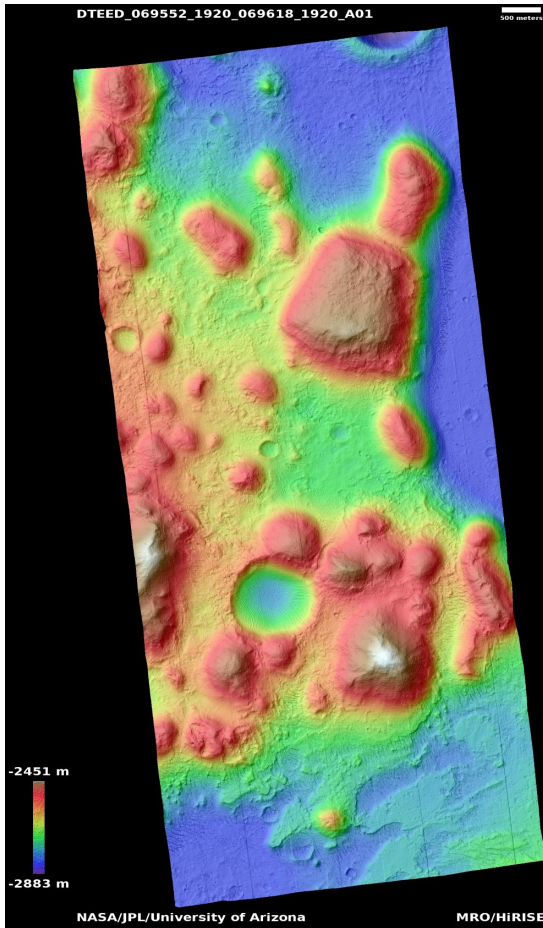
For more details about this DTM, visit:

https://www.uahirise.org/dtm/ESP_037047_1845



Rough terrain in Xanthe Terra

DTEED_069552_1920_069618_1920_A01



Latitude: 11.9 **Longitude:** 315.8

DTM Producer: UA | DORA ELALAOUI-PINEDO

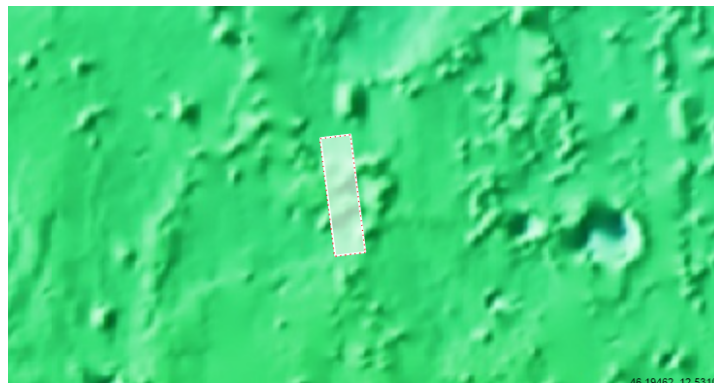
Stereo Pair:

ESP_069552_1920

ESP_069618_1920

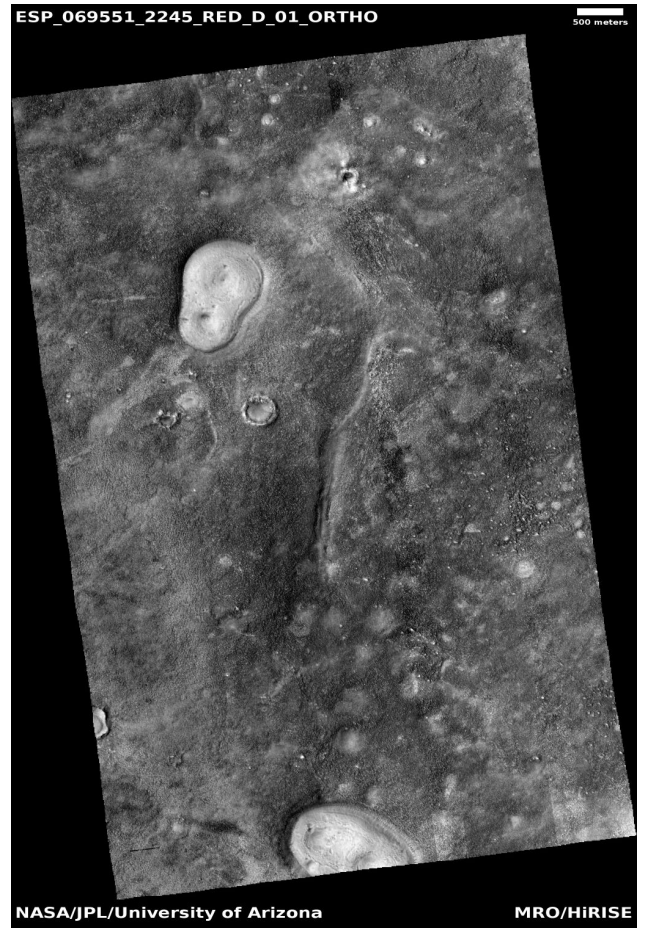
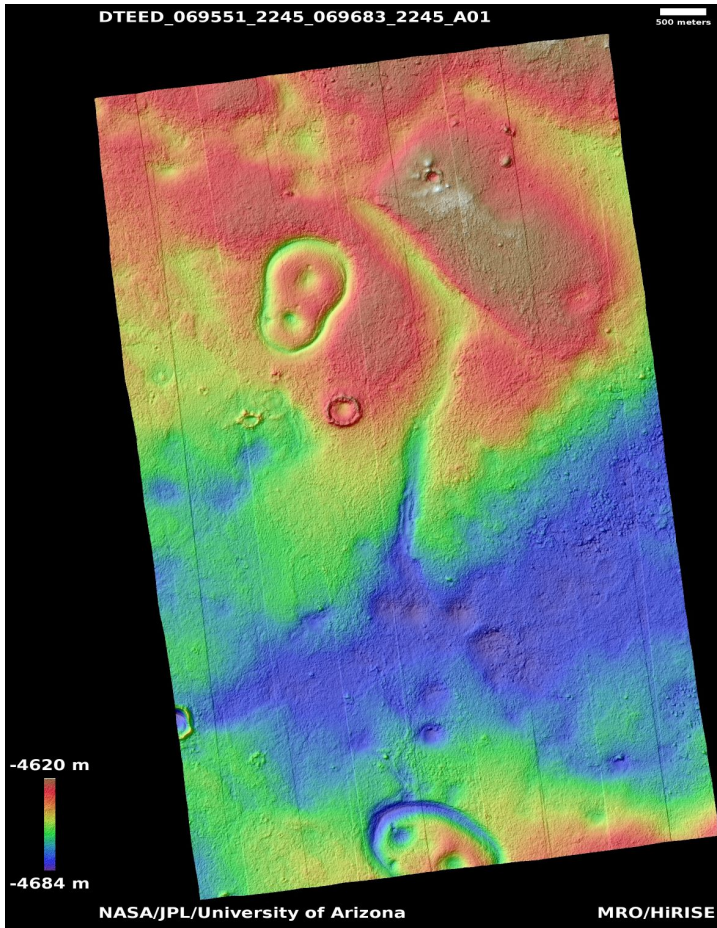
For more details about this DTM, visit:

https://www.uahirise.org/dtm/ESP_069552_1920



Northern plains domes

DTEED_069551_2245_069683_2245_A01



Latitude: 44.4 **Longitude:** 338.3

DTM Producer: UA | REED SPURLING

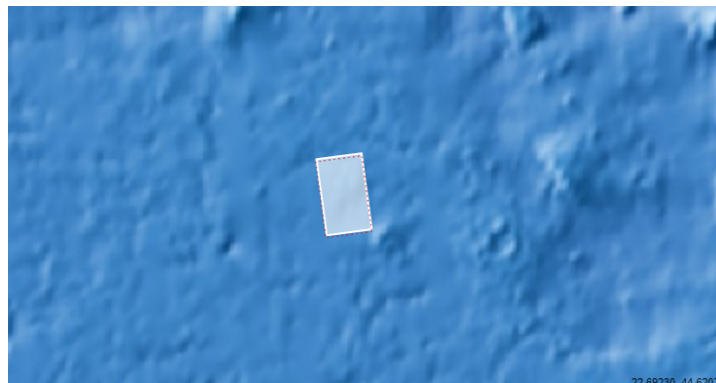
Stereo Pair:

ESP_069683_2245

ESP_069551_2245

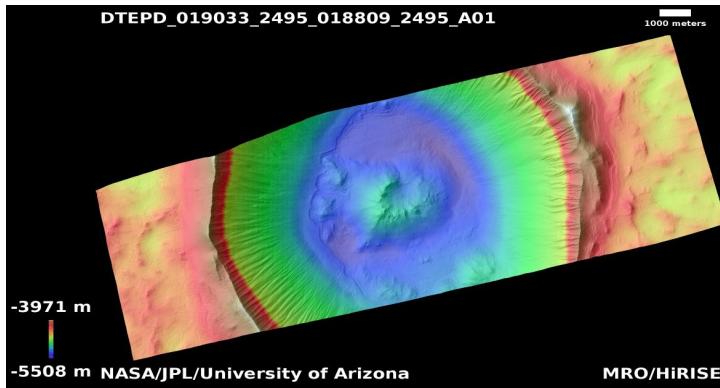
For more details about this DTM, visit:

https://www.uahirise.org/dtm/ESP_069551_2245



Northern plains crater with summer ice

DTEPD_019033_2495_018809_2495_A01



Latitude: 69.3 **Longitude:** 274.0

DTM Producer: UA | REED SPURLING

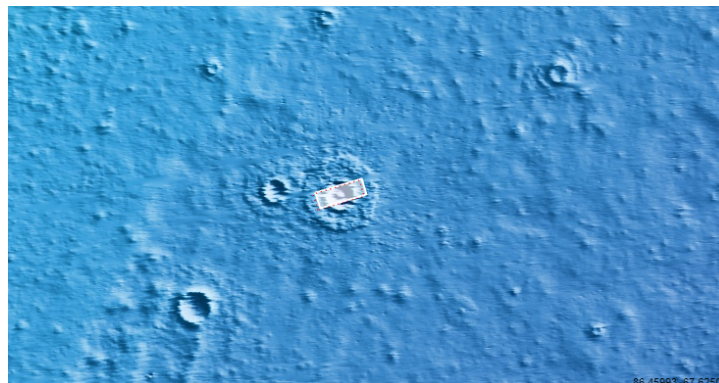
Stereo Pair:

ESP_019033_2495

ESP_018809_2495

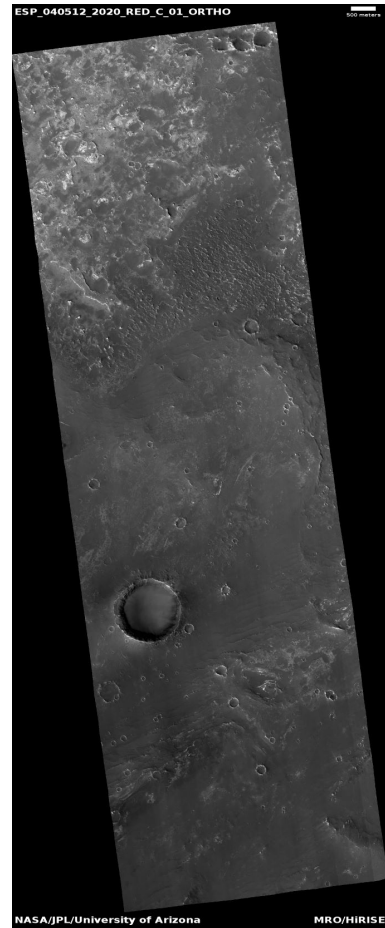
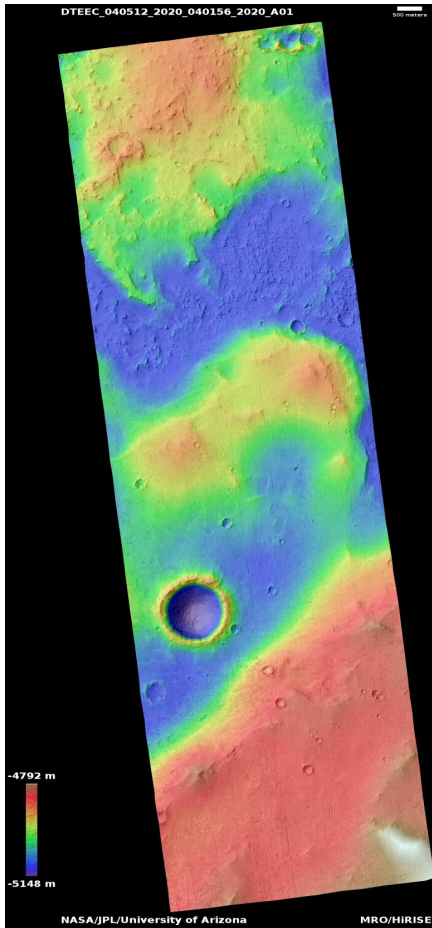
For more details about this DTM, visit:

https://www.uahirise.org/dtm/ESP_019033_2495



Candidate landing site for 2020 mission in McLaughlin Crater

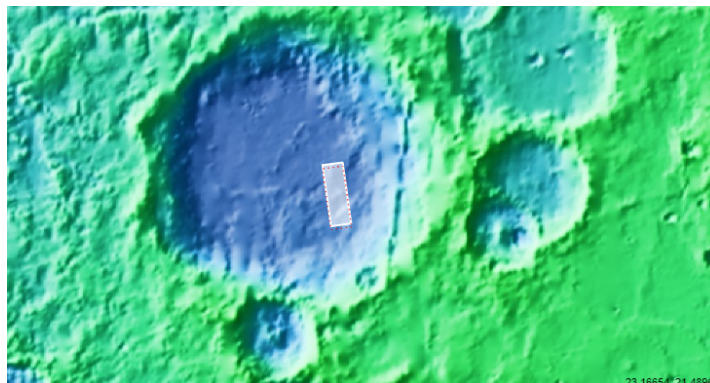
DTEEC_040512_2020_040156_2020_A01



Latitude: 21.7 **Longitude:** 337.9
DTM Producer: UA | REED SPURLING
Stereo Pair:

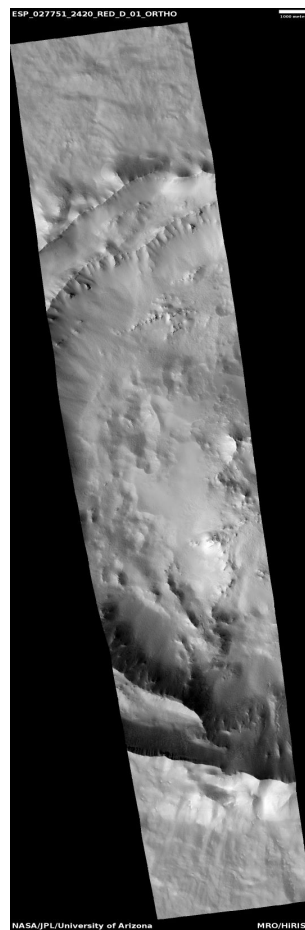
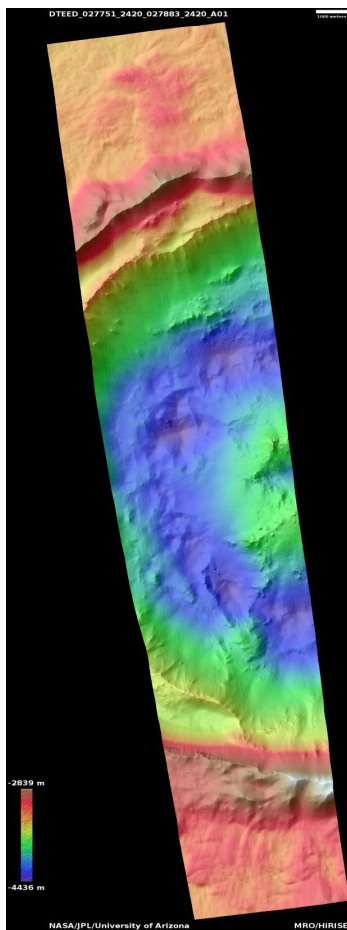
ESP_040156_2020
ESP_040512_2020

For more details about this DTM, visit:
https://www.uahirise.org/dtm/ESP_040512_2020



Very well-preserved high-latitude impact crater

DTEED_027751_2420_027883_2420_A01



Latitude: 61.7 **Longitude:** 228.9

DTM Producer: UA | DORA ELALAOUI-PINEDO

Stereo Pair:

ESP_027883_2420

ESP_027751_2420

For more details about this DTM, visit:

https://www.uahirise.org/dtm/ESP_027751_2420

