



**HIGH RESOLUTION IMAGING  
SCIENCE EXPERIMENT**



# **DTM PDS RELEASES**

*August 2021*

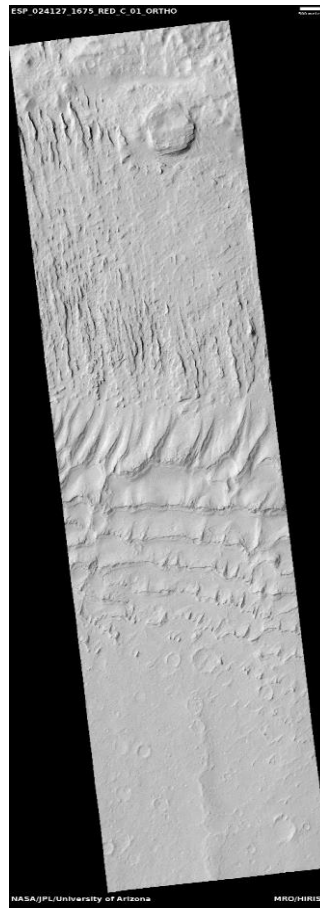
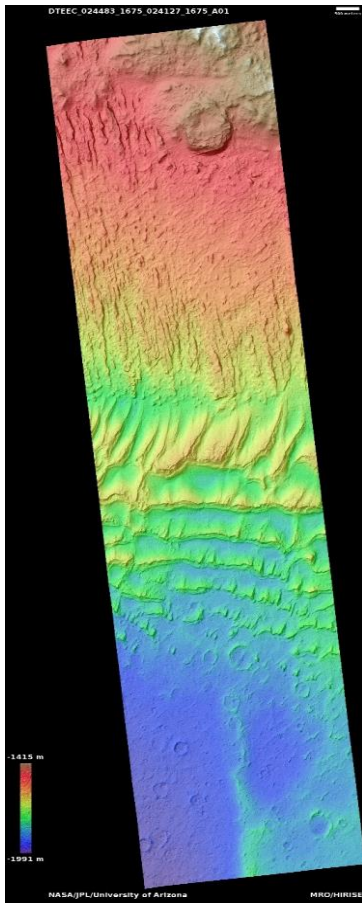
Edited by Kris Akers | UA

## DTMs Included this Month

Apollinaris Sulci indurated dunes.....	1
Very well-preserved 900-meter northern plains.....	2

# Apollinaris Sulci indurated dunes

DTEEC\_024483\_1675\_024127\_1675\_A01



12.6°S 178.2°E

DTM Producer: UA | Kris Akers

Stereo Pair:

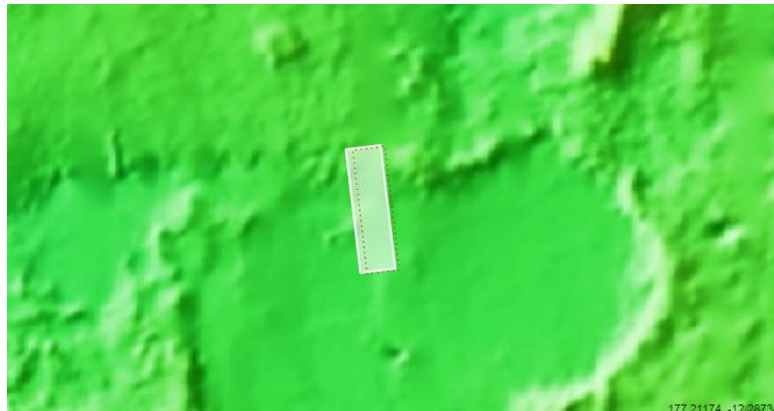
ESP\_024483\_1675

ESP\_024127\_1675

For more details about this DTM, visit:

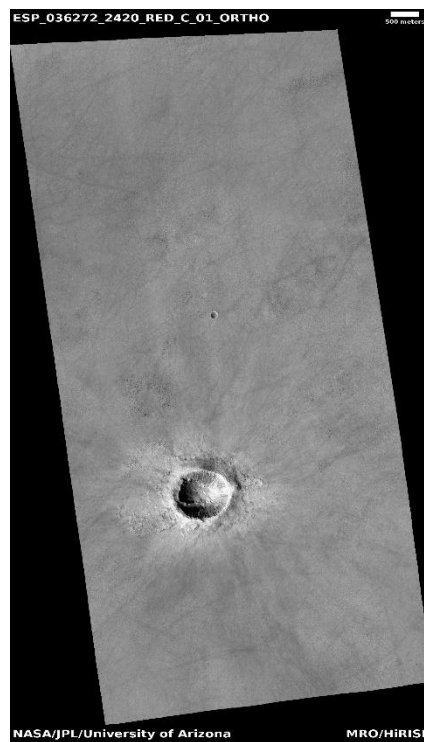
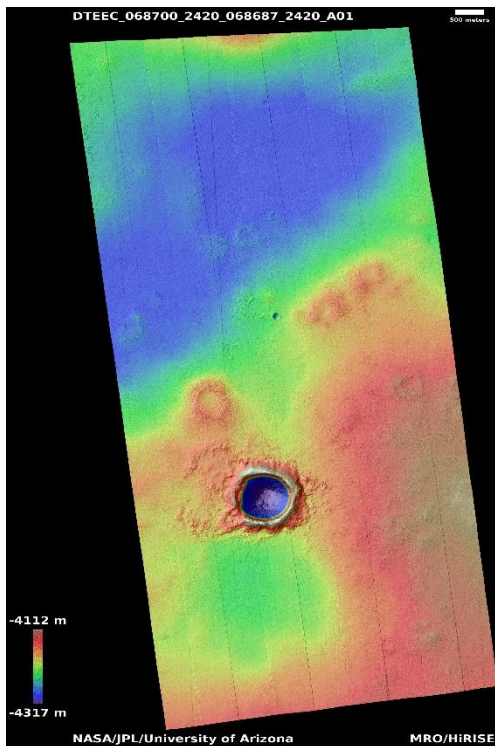
[https://www.uahirise.org/dtm/dtm.php?](https://www.uahirise.org/dtm/dtm.php?ID=ESP_024483_1675)

[ID=ESP\\_024483\\_1675](https://www.uahirise.org/dtm/dtm.php?ID=ESP_024483_1675)



# Very well-preserved 900-meter northern plains

DTEEC\_068700\_2420\_068687\_2420\_A01



61.5°N 155.4°E

DTM Producer: UA | Kris Akers

Stereo Pair:

ESP\_045238\_1525

ESP\_068687\_2420

Extra Ortho:

ESP\_036272\_2420

For more details about this DTM, visit:

[https://www.uahirise.org/dtm/dtm.php?ID=ESP\\_068700\\_2420](https://www.uahirise.org/dtm/dtm.php?ID=ESP_068700_2420)

