



## HIGH RESOLUTION IMAGING SCIENCE EXPERIMENT



COLLEGE OF SCIENCE  
**LUNAR & PLANETARY  
LABORATORY**

# DTM PDS RELEASES

*April 2024*

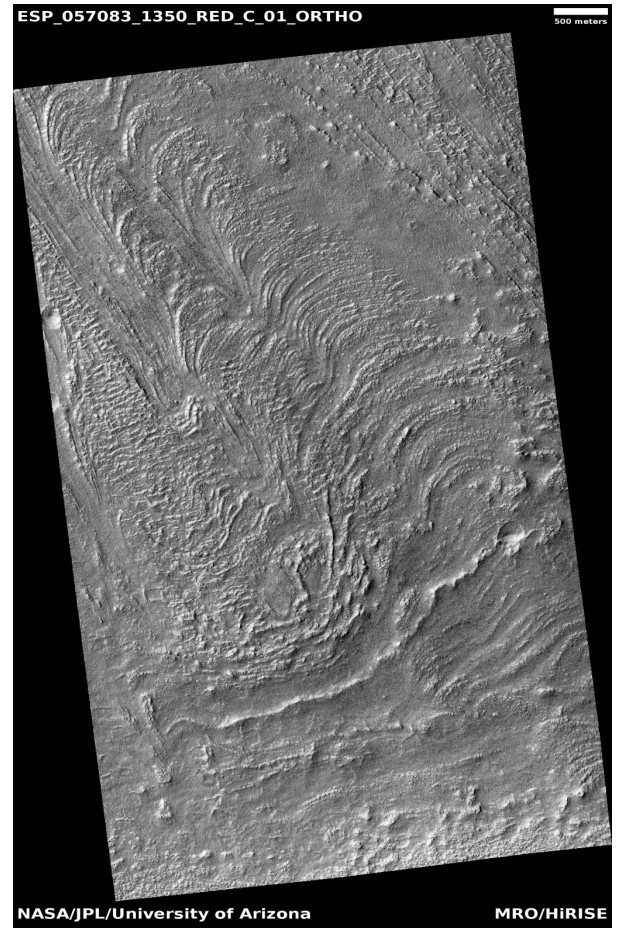
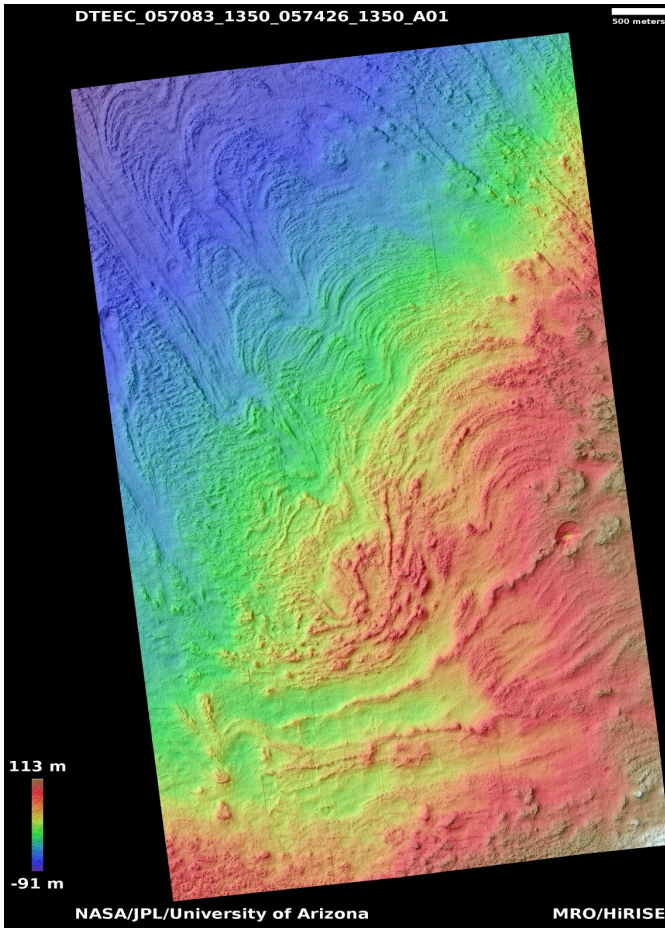
Edited by Kris Akers | UA

### DTMs Included this Month

Transverse ridges on Euripus Mons	1
Central peak	2
Northeast Syrtis Major Planum lava and hydrated minerals	3
Possible phyllosilicate-rich terrain in Nirgal Vallis and gully monitoring	4
Small delta or fan	5
Ring and cone structures and platy-ridged terrain in Amazonis Planitia	6

# Transverse ridges on Euripus Mons

DTEEC\_057083\_1350\_057426\_1350\_A01



**Latitude:** -44.6    **Longitude:** 104.7

**DTM Producer:** UA | BRANDEN M GOSSE

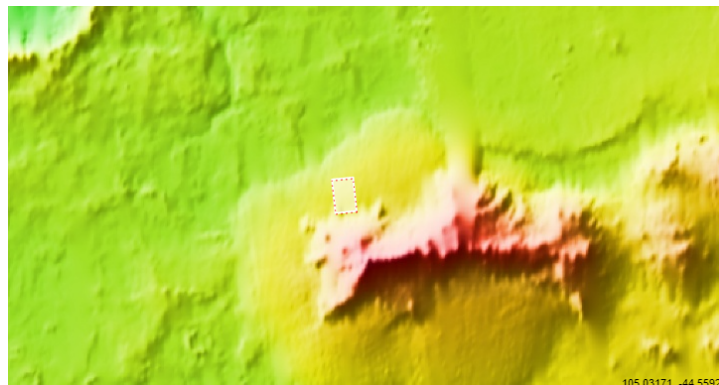
**Stereo Pair:**

ESP\_057426\_1350

ESP\_057083\_1350

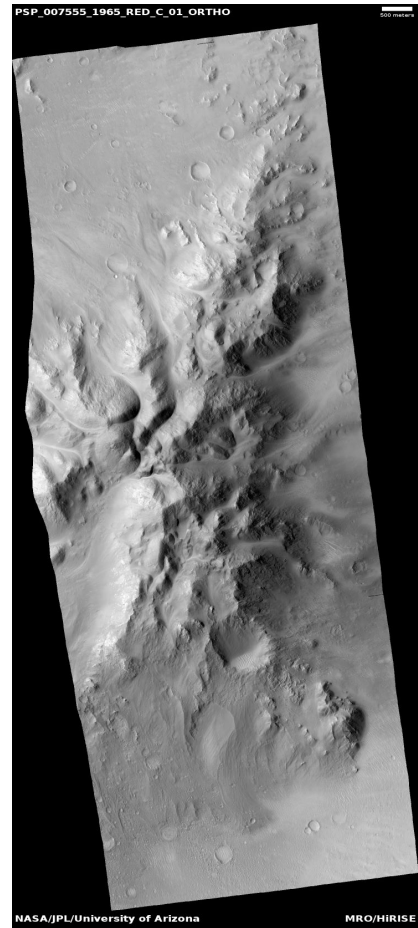
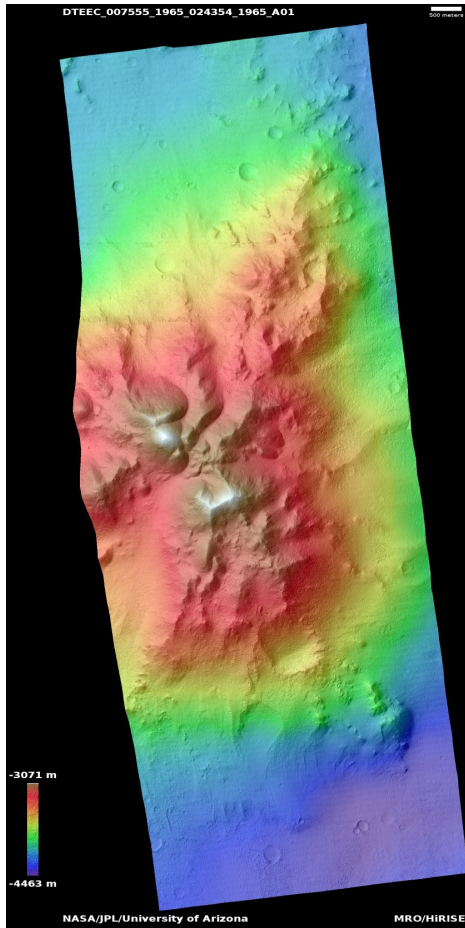
**For more details about this DTM, visit:**

[https://www.uahirise.org/dtm/ESP\\_057083\\_1350](https://www.uahirise.org/dtm/ESP_057083_1350)



# Central peak

DTEEC\_007555\_1965\_024354\_1965\_A01



**Latitude:** 16.1    **Longitude:** 101.0

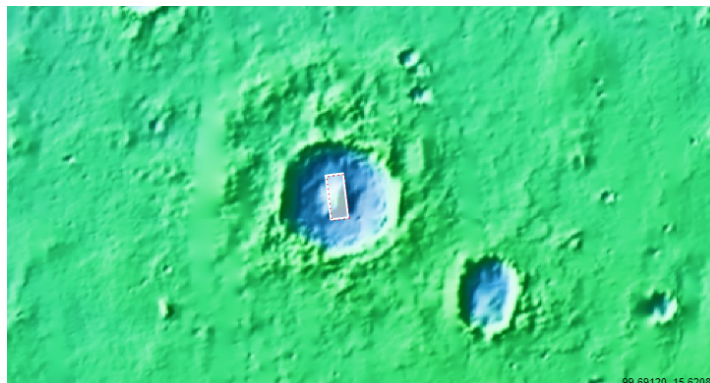
**DTM Producer:** UA | KRIS AMANDA AKERS

**Stereo Pair:**

PSP\_007555\_1965  
ESP\_024354\_1965

**For more details about this DTM, visit:**

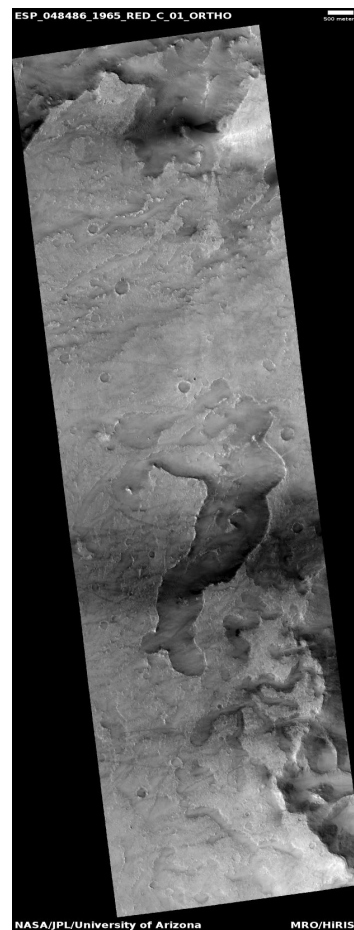
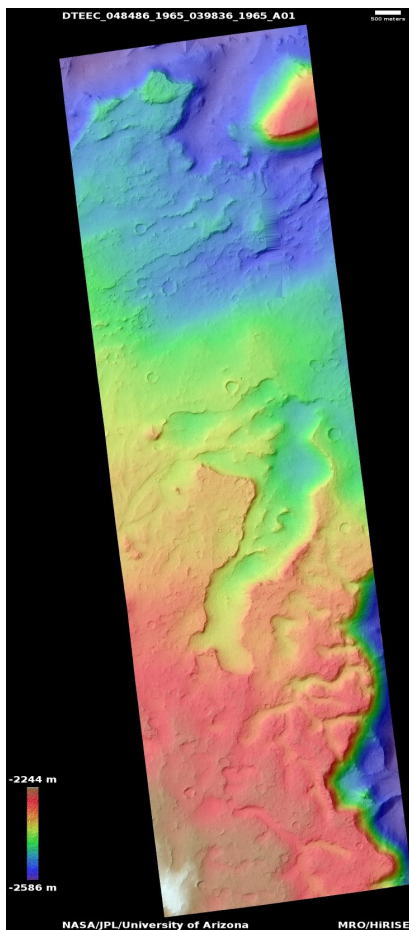
[https://www.uahirise.org/dtm/PSP\\_007555\\_1965](https://www.uahirise.org/dtm/PSP_007555_1965)





# Northeast Syrtis Major Planum lava and hydrated minerals

DTEEC\_048486\_1965\_039836\_1965\_A01



**Latitude:** 16.5    **Longitude:** 76.8

**DTM Producer:** UA | BRANDEN M GOSSE

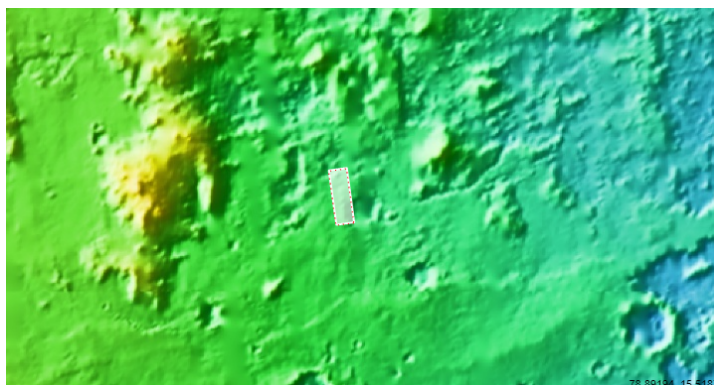
**Stereo Pair:**

ESP\_039836\_1965

ESP\_048486\_1965

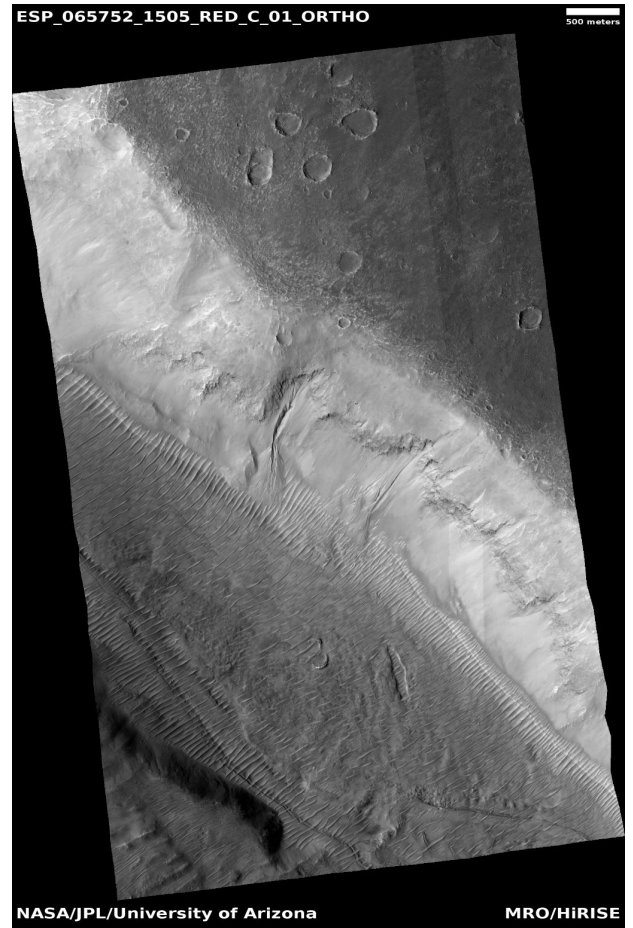
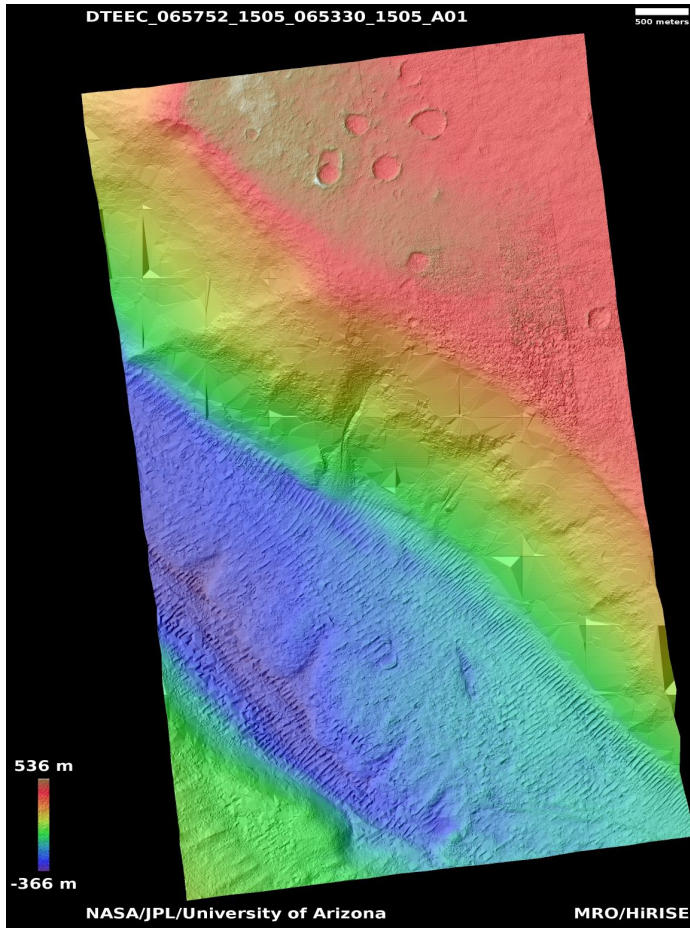
**For more details about this DTM, visit:**

[https://www.uahirise.org/dtm/ESP\\_048486\\_1965](https://www.uahirise.org/dtm/ESP_048486_1965)



# Possible phyllosilicate-rich terrain in Nirgal Vallis and gully monitoring

DTEEC\_065752\_1505\_065330\_1505\_A01



**Latitude:** -29.0    **Longitude:** 320.9

**DTM Producer:** UA | KRIS AMANDA AKERS

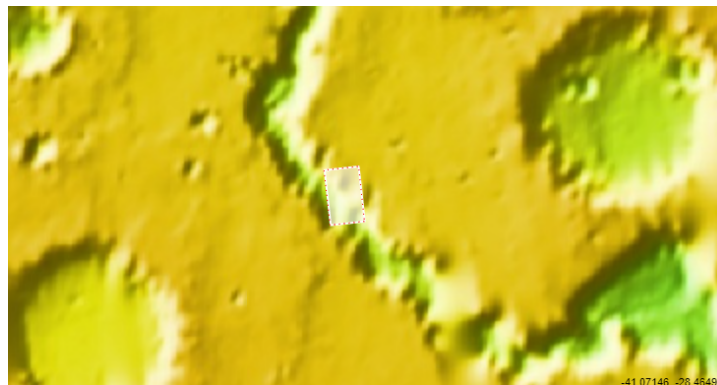
**Stereo Pair:**

ESP\_065330\_1505

ESP\_065752\_1505

**For more details about this DTM, visit:**

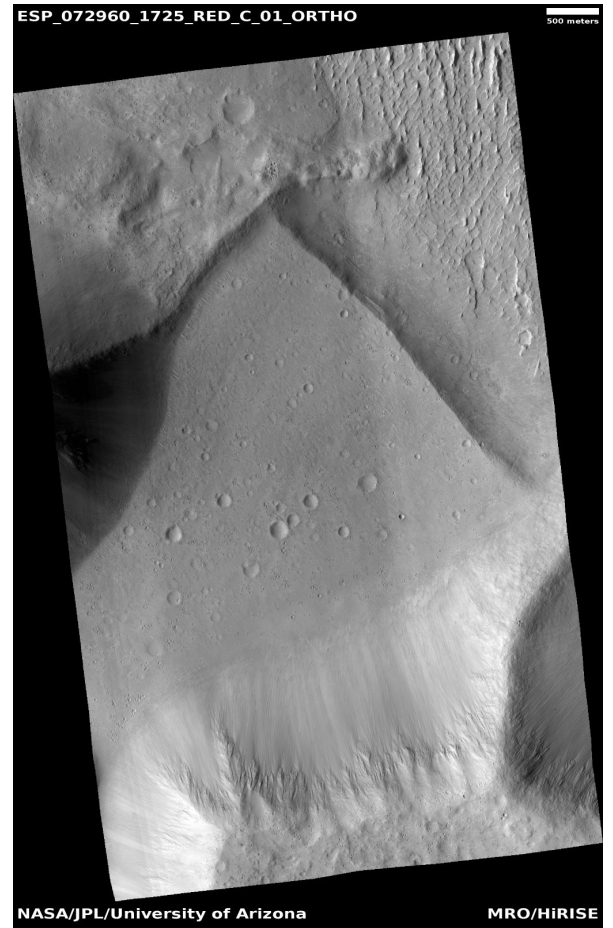
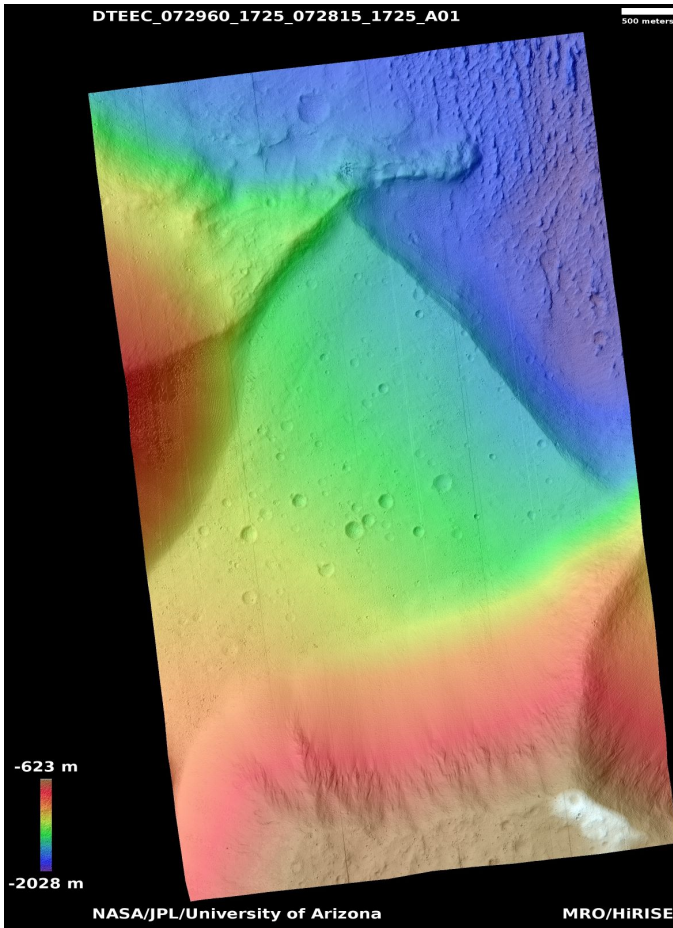
[https://www.uahirise.org/dtm/ESP\\_065752\\_1505](https://www.uahirise.org/dtm/ESP_065752_1505)





# Small delta or fan

DTEEC\_072960\_1725\_072815\_1725\_A01



**Latitude:** -7.6    **Longitude:** 148.0

**DTM Producer:** UA | KRIS AMANDA AKERS

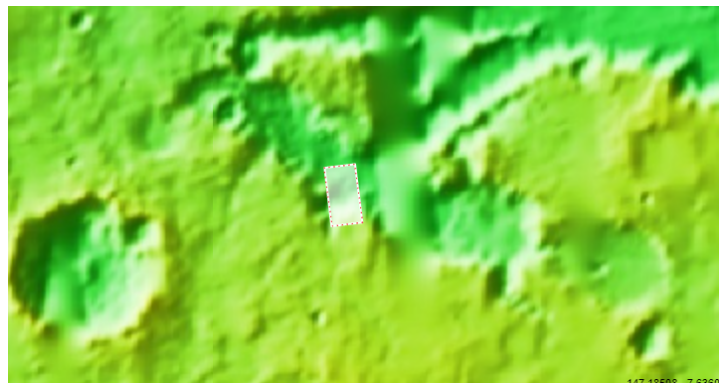
**Stereo Pair:**

ESP\_072815\_1725

ESP\_072960\_1725

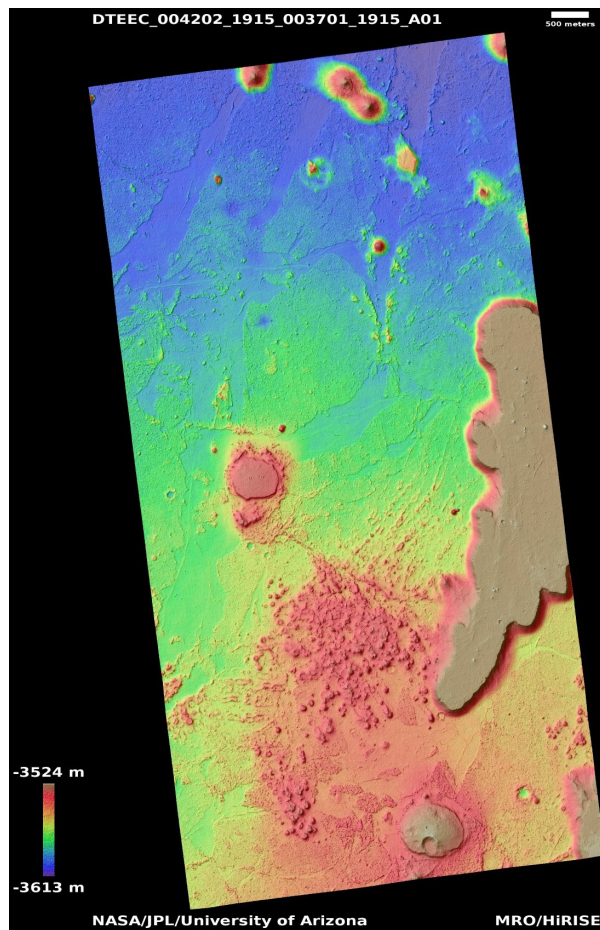
**For more details about this DTM, visit:**

[https://www.uahirise.org/dtm/ESP\\_072960\\_1725](https://www.uahirise.org/dtm/ESP_072960_1725)



# Ring and cone structures and platy-ridged terrain in Amazonis Planitia

DTEEC\_004202\_1915\_003701\_1915\_A01



**Latitude:** 11.5    **Longitude:** 205.0

**DTM Producer:** UA | KRIS AMANDA AKERS

**Stereo Pair:**

PSP\_004202\_1915

PSP\_003701\_1915

**For more details about this DTM, visit:**

[https://www.uahirise.org/dtm/PSP\\_004202\\_1915](https://www.uahirise.org/dtm/PSP_004202_1915)

